



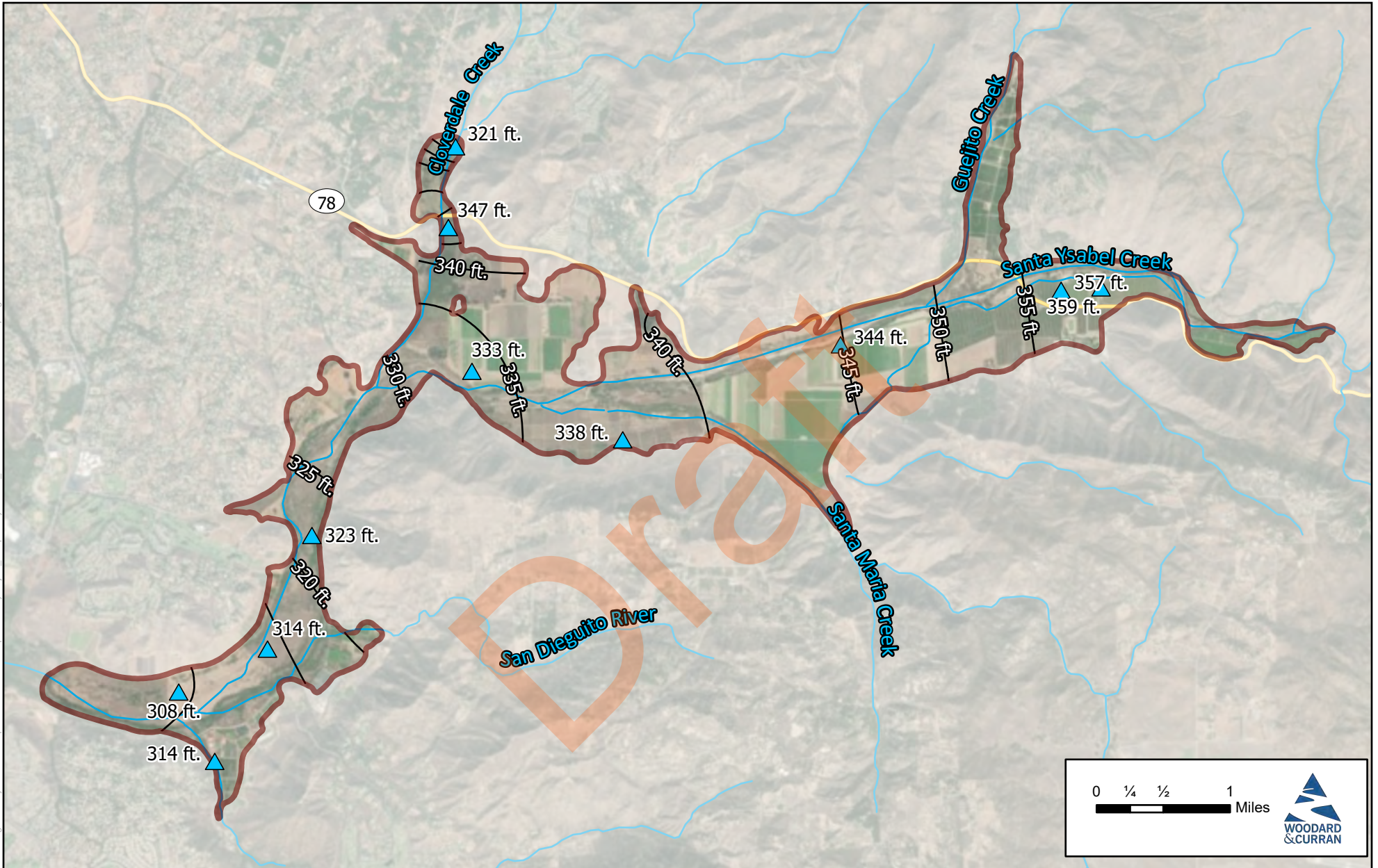
Public
Utilities



Groundwater
Sustainability Plan:
Technical Peer Review
Draft Figures for Review and
Discussion

Draft

Figure Exported: 4/30/2020. By: mwick. Using: C:\Projects\San_Pasqual_GIS_Pro\San_Pasqual_GIS_Maps\Project_V2_appx/Layout_WF_13_Data_Overview_GWLs_2015_Spring_GWE



Project #: 0011197

Legend

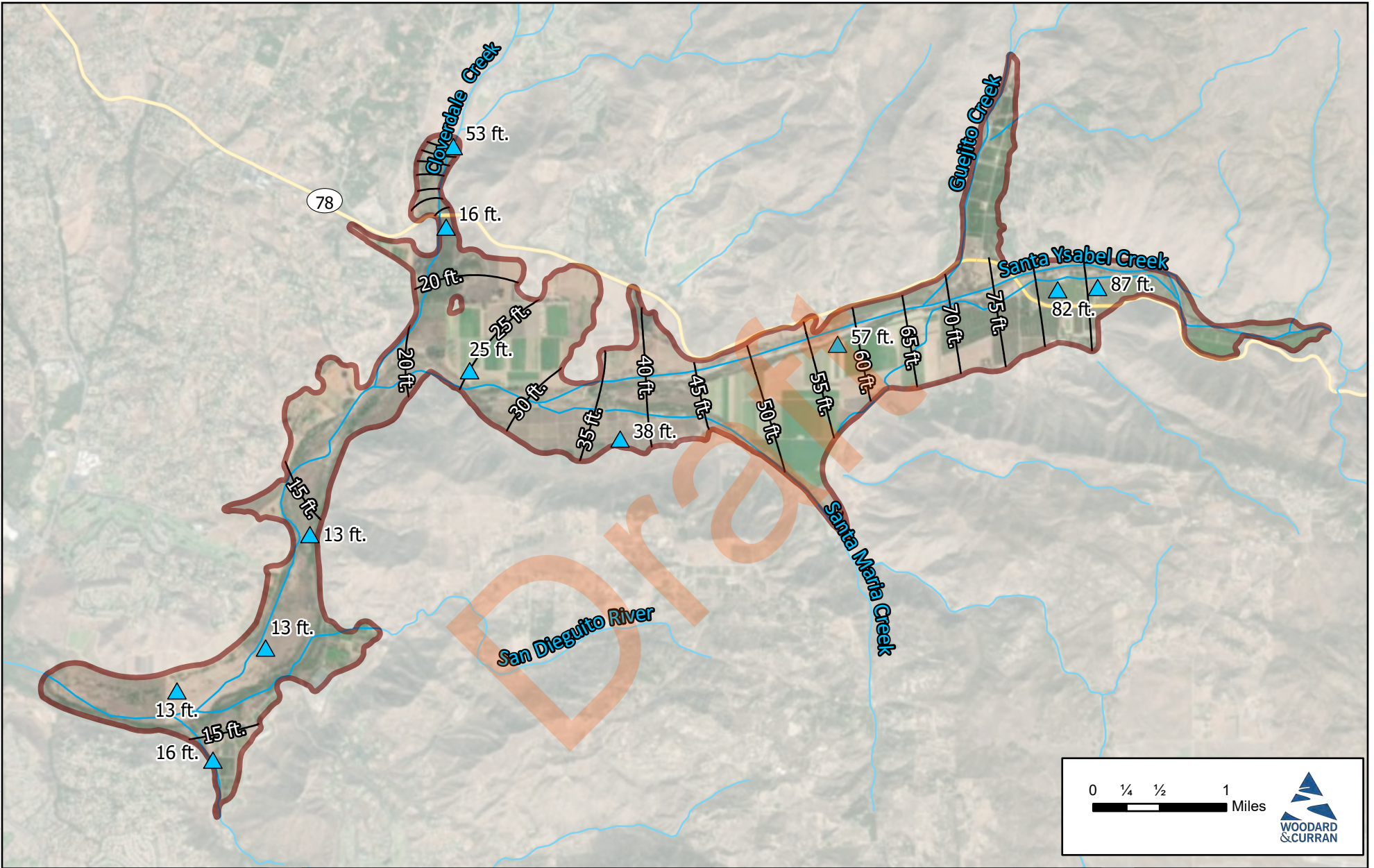
- San Pasqual Valley Basin
- Monitoring Wells (Spring 2015 GWE ft.)
- Groundwater Elevation Contour (5 ft.)



Figure WF-13

San Pasqual Valley GSA
San Pasqual Valley
Spring 2015 GWE

Figure Exported: 4/30/2020. By: mwick. Using: C:\Projects\San Pasqual\GIS\Pro\San Pasqual\San Pasqual\GIS\Pro\San Pasqual\San Pasqual\Project_V2.aprx; Layout: WF_14 - Data Overview - GWLs - 2015 Spring DTW



Project #: 0011197

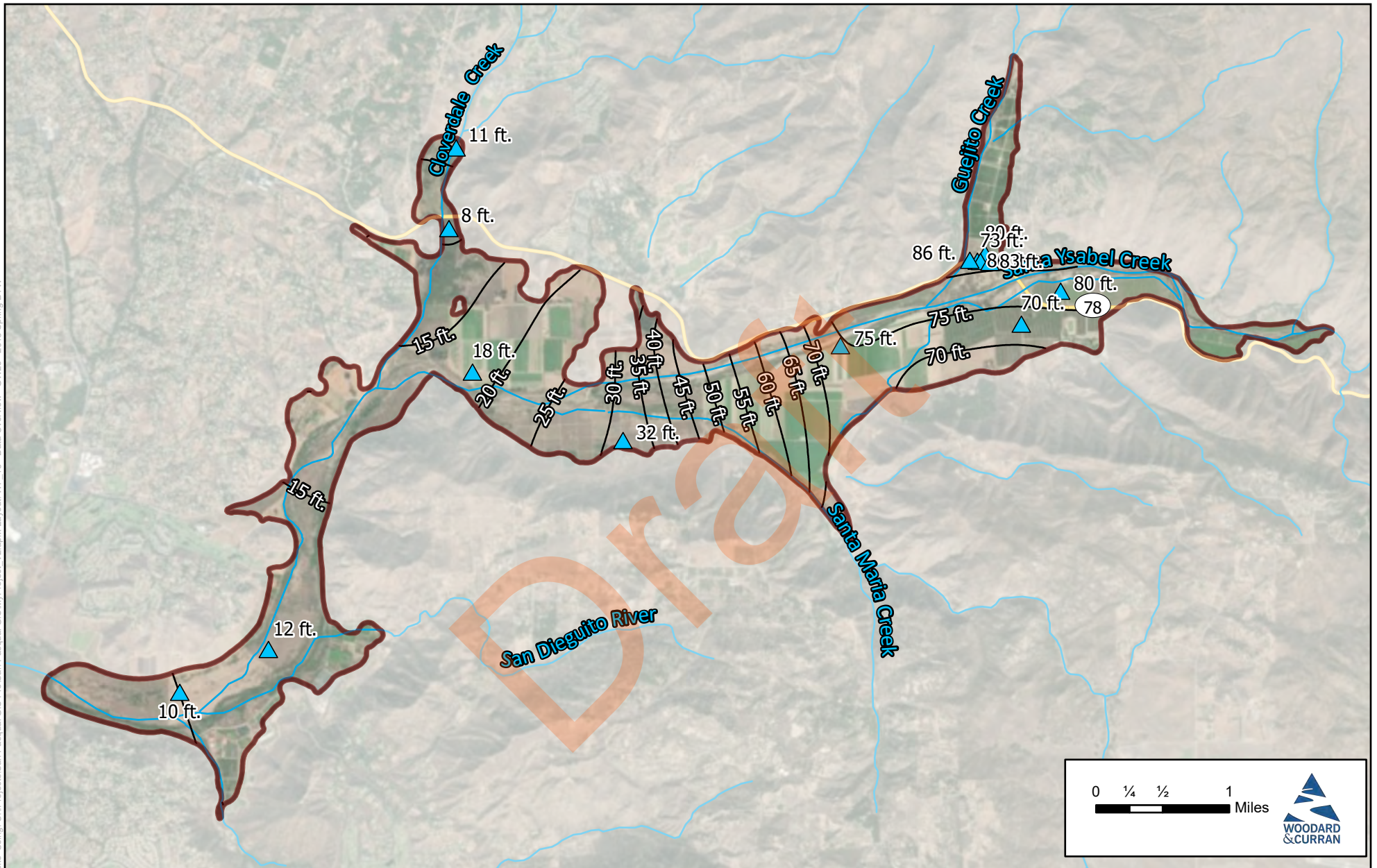
Legend

- San Pasqual Valley Basin
- ▲ Monitoring Wells (Spring 2015 DTW ft.)
- Depth to Groundwater Contour (5 ft.)



Figure WF-14
 San Pasqual Valley GSA
San Pasqual Valley
Spring 2015 DTW

Figure Exported: 4/30/2020. By: mwick. Using: C:\Projects\San_Pasqual_GIS_Pro\San_Pasqual_GIS\Project_V2_app\Layout_WF-15-Data_Overview-GWLs-2018_Spring_DTW



Project #: 0011197

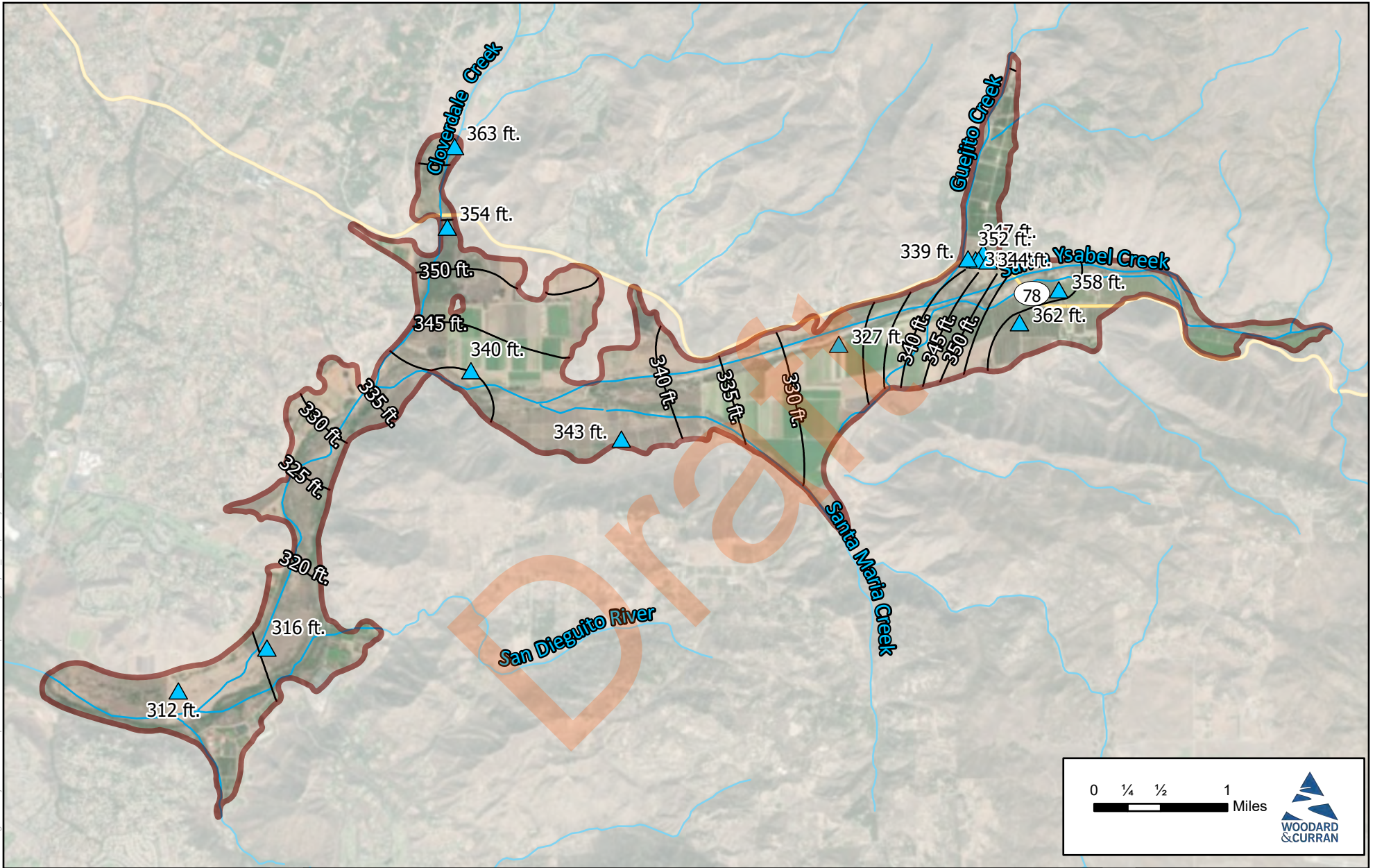
Legend

- San Pasqual Valley Basin
- Monitoring Wells (Spring 2018 DTW ft.)
- Depth to Water Contour (5 ft.)



Figure WF-15
 San Pasqual Valley GSA
San Pasqual Valley
Spring 2018 DTW

Figure Exported: 4/30/2020. By: mwick. Using: C:\Projects\San_Pasqual_GIS_Pro\San_Pasqual_GIS_Maps\Project_V2_appx/Layout_WF-16_Data_Overview_GWLs_2018_Spring_GWE



Project #: 0011197

Legend

- San Pasqual Valley Basin
- ▲ Monitoring Wells (Spring 2018 GWE ft.)
- Ground Water Elevation Contour (5 ft.)

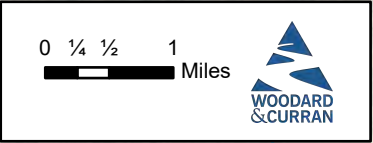
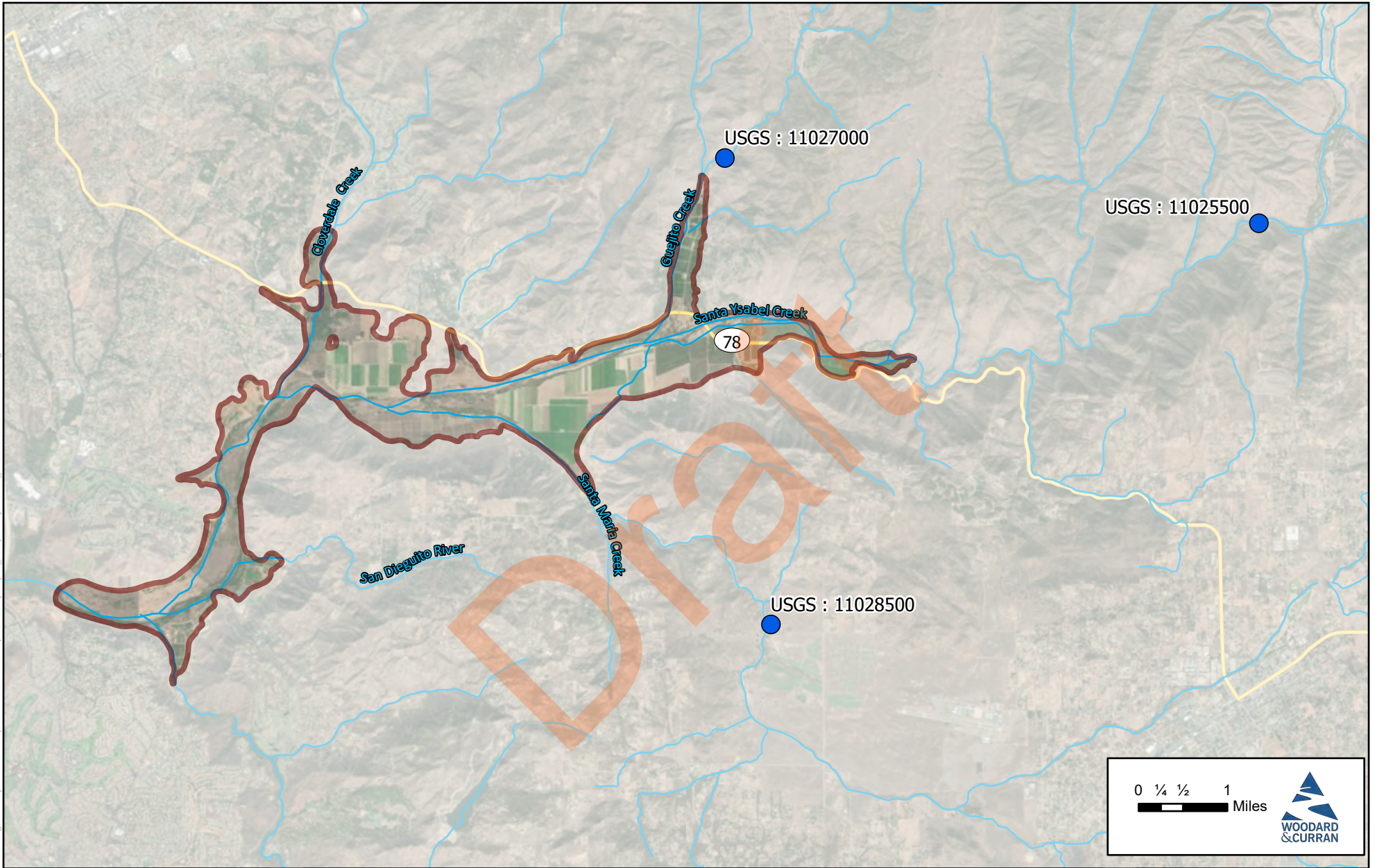


Figure WF-16

San Pasqual Valley GSA
San Pasqual Valley
Spring 2018 GWE

Third Party GIS Disclaimer: This map is for reference and graphical purposes only and should not be relied upon by third parties for any legal decisions. Any reliance upon the map or data contained herein shall be at the users' sole risk. Source: SanDAG/SanGIS, USGS, DWR.

Figure Exported: 1/24/2024, By: mwick, Using: C:\Projects\San Pasqual GIS Pro\San Pasqual GISM\Project_V2_appx/Layout_WF_19_SIW_Surface Water Gages



Project #: 0011197

Legend

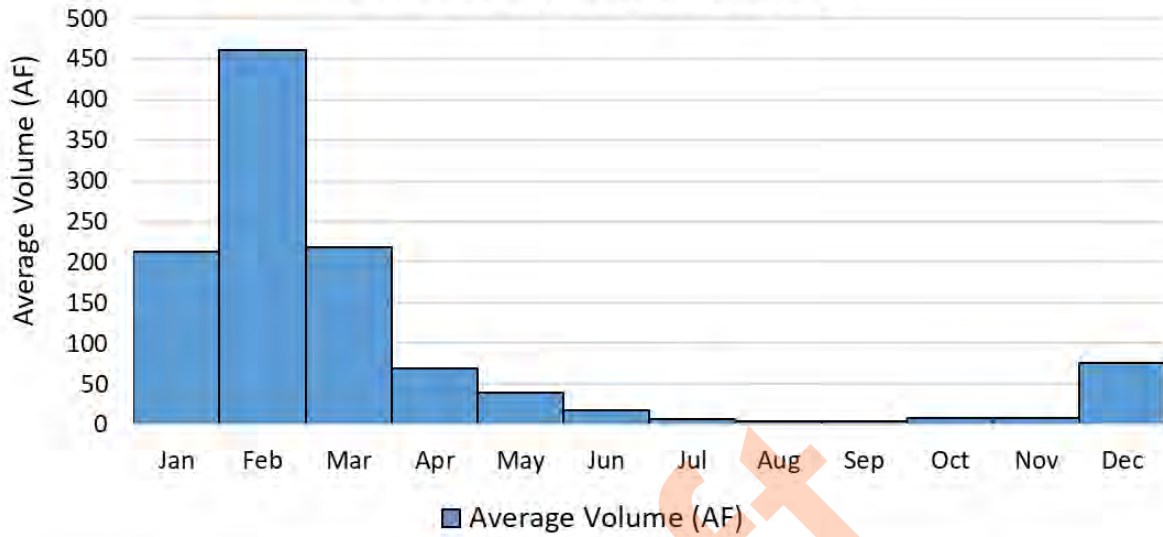
- San Pasqual Valley Basin
- Surface Water Gage (USGS Well #)



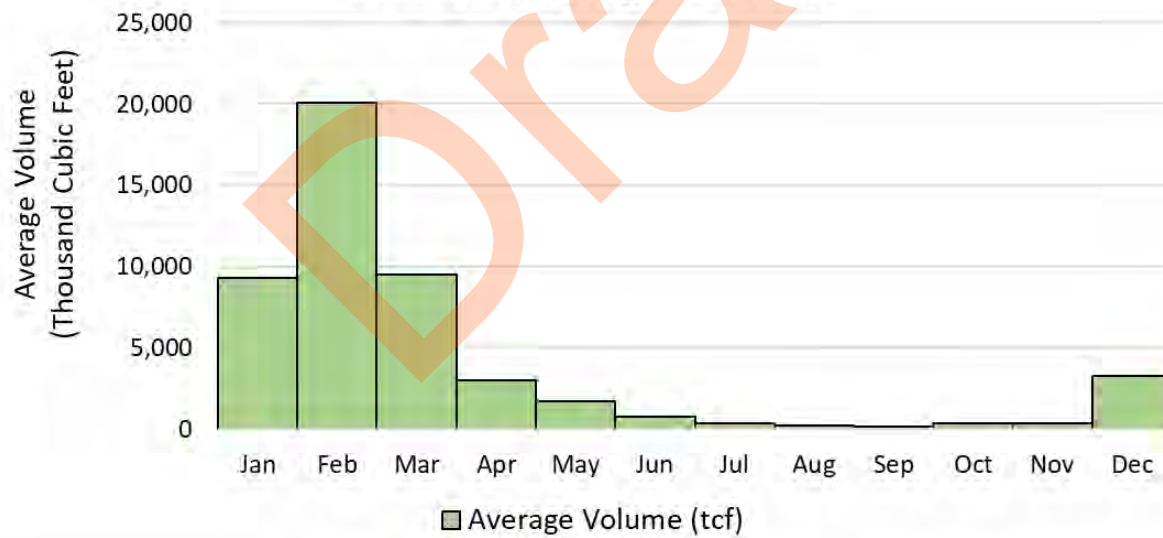
Figure WF-19
 San Pasqual Valley GSA
**San Pasqual Valley
 Stream Gages**

Third Party GIS Disclaimer: This map is for reference and graphical purposes only and should not be relied upon by third parties for any legal decisions. Any reliance upon the map or data contained herein shall be at the users' sole risk. Source: SanDAG/SanGIS, USGS, DWR.

Average Volume (AF)
USGS Stream Gauge 11027000



Average Volume (tcf)
USGS Stream Gauge 11027000



Average Flow Rate (cfs)
USGS Stream Gauge 11027000

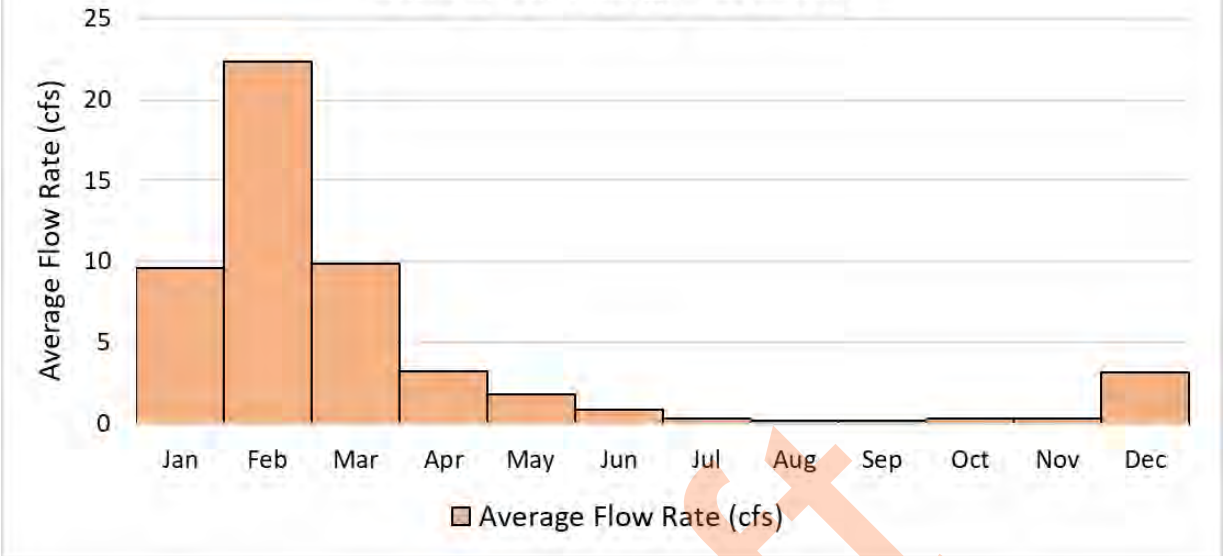
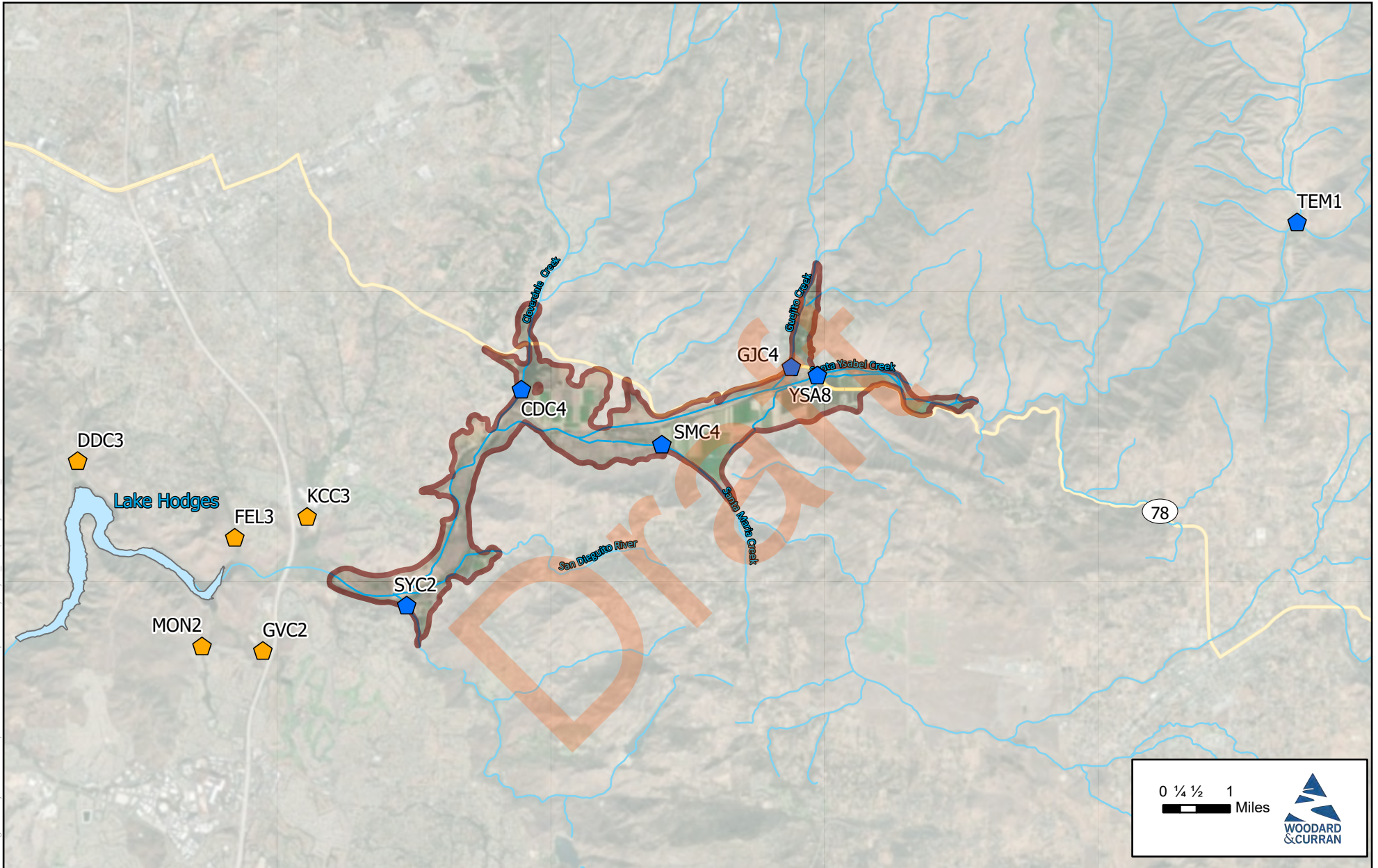


Figure Exported: 2/5/2020, By: mwicks, Using: C:\Projects\San Pasqual GIS Pro\San Pasqual GIS\Map\Project_V2.aprx; Layout: WF_21 - SW - Surface Water Quality



Project #: 0011197

Legend




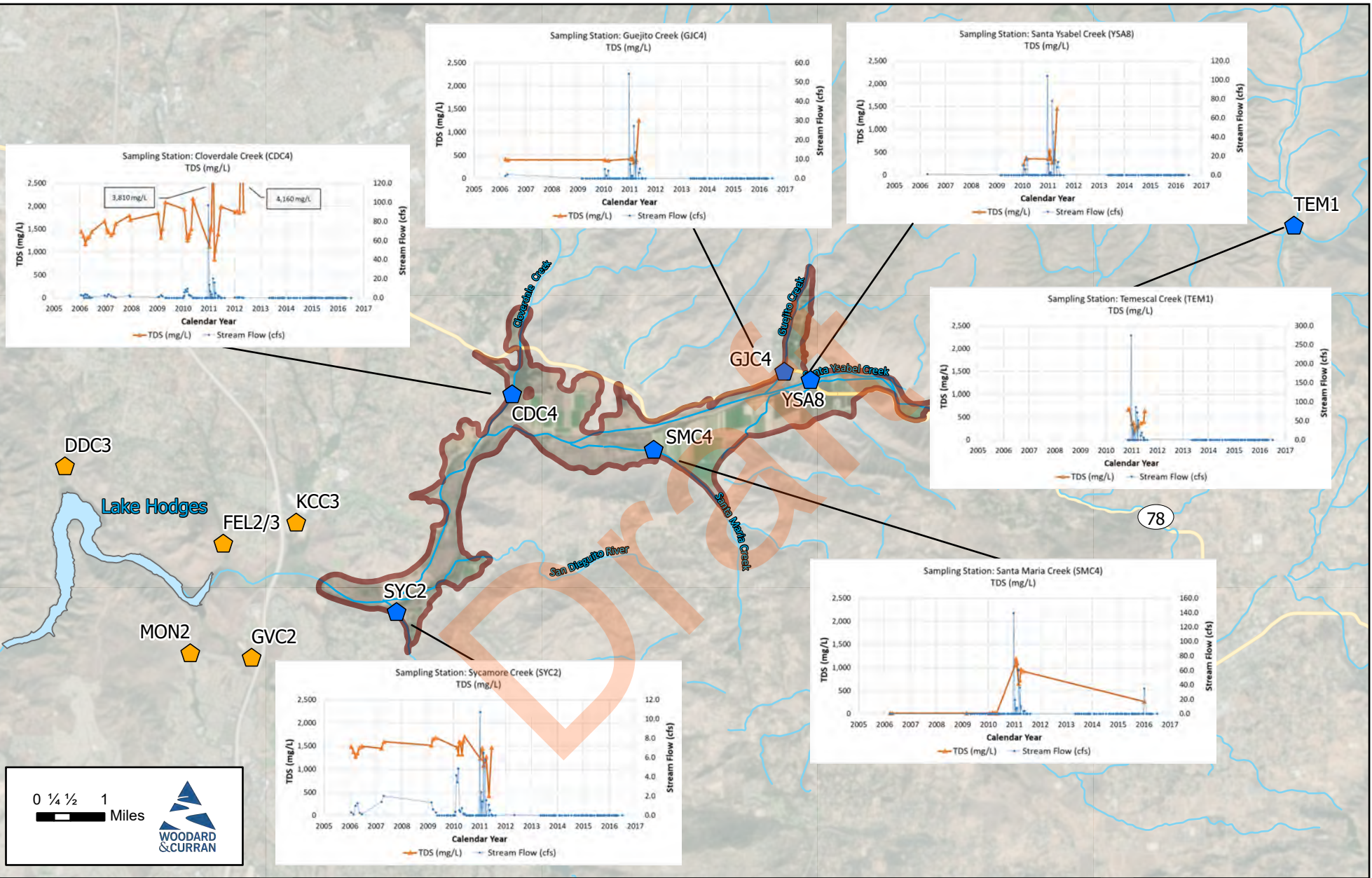
-  San Pasqual Valley Basin
-  Lake Hodges Surface Water Quality Sampling Point
-  Surface Water Quality Station



Figure WF-21
 San Pasqual Valley GSA
**San Pasqual Valley
 SW Quality Points**

Figure Exported: 2/16/2020, By: mwicks, Using: C:\Projects\San Pasqual GIS Pro\San Pasqual GIS\MyProject_V2.aprx;Layout: WF_22_SW_TDS_Surface Water Quality



0 1/4 1/2 1 Miles

Legend

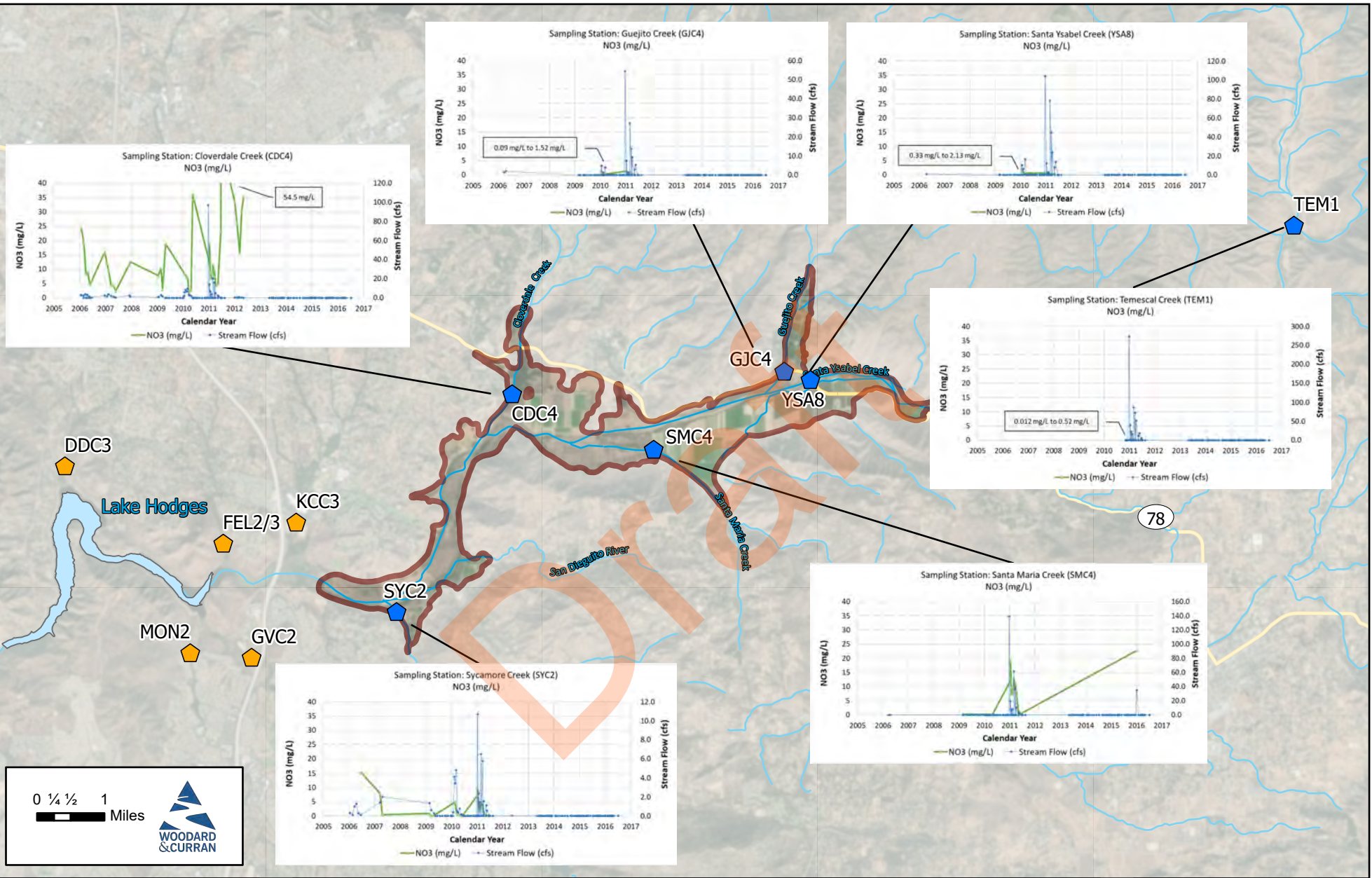
- San Pasqual Valley Basin
- Lake Hodges Surface Water Quality Sampling Point
- Surface Water Quality Station

Project #: 0011197

Figure WF-22
San Pasqual Valley GSA
**San Pasqual Valley
SW TDS Quality**

Third Party GIS Disclaimer: This map is for reference and graphical purposes only and should not be relied upon by third parties for any legal decisions. Any reliance upon the map or data contained herein shall be at the users' sole risk. **Source:** City of San Diego

Figure Exported: 2/16/2020, By: mwicks. Using: C:\Projects\San Pasqual GIS Pro\San Pasqual GIS Pro\Spatial\GIS\MyProject_V2.aprx;Layout: WF_23_SW_NO3_Surface Water Quality



0 1/4 1/2 1 Miles

Legend

- San Pasqual Valley Basin
- Lake Hodges Surface Water Quality Sampling Point
- Surface Water Quality Station

Project #: 0011197

Figure WF-23
San Pasqual Valley GSA
**San Pasqual Valley
SW NO3 Quality**

Third Party GIS Disclaimer: This map is for reference and graphical purposes only and should not be relied upon by third parties for any legal decisions. Any reliance upon the map or data contained herein shall be at the users' sole risk. Source: City of San Diego



LEGEND/NOTES

● Well

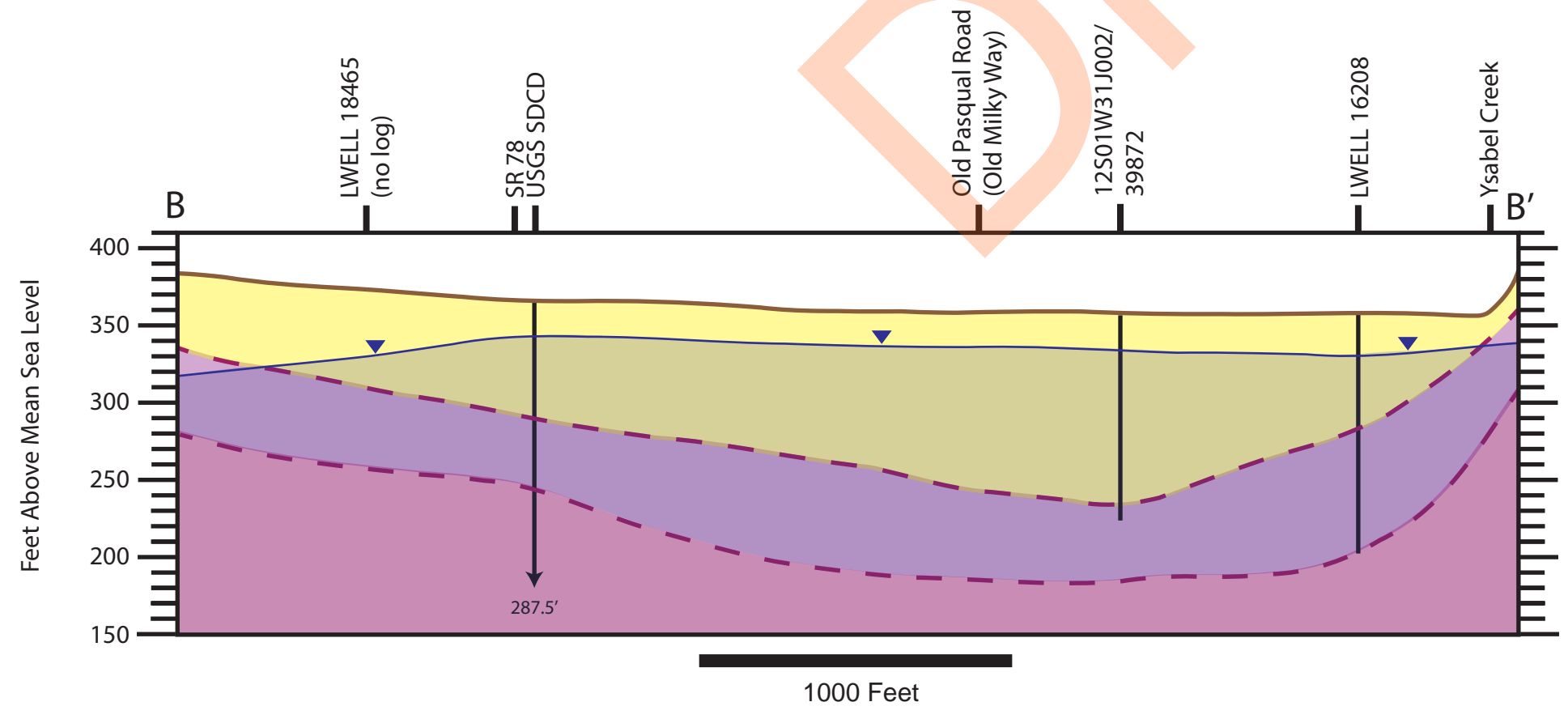
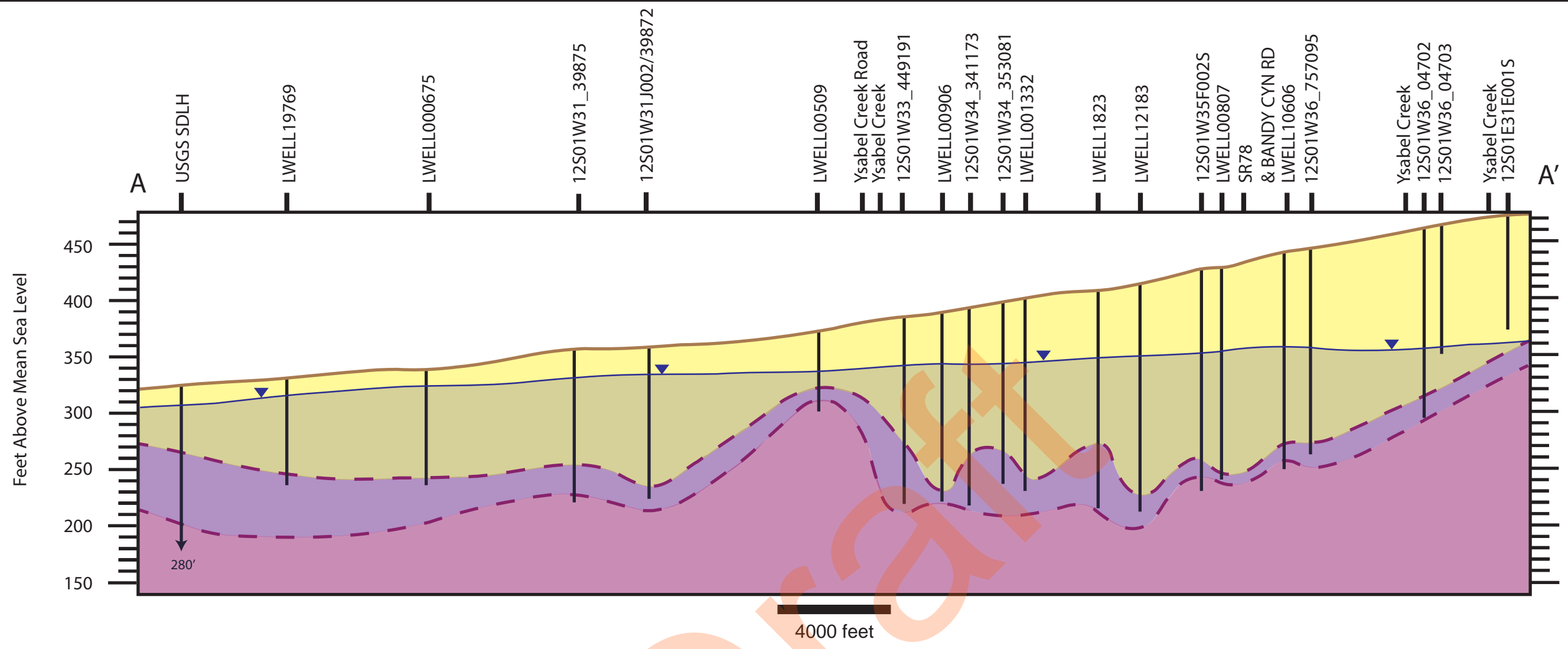


1 mile

Figure 2 - Cross Section Lines

San Pasqual Valley
Groundwater Management Plan
San Diego County, California



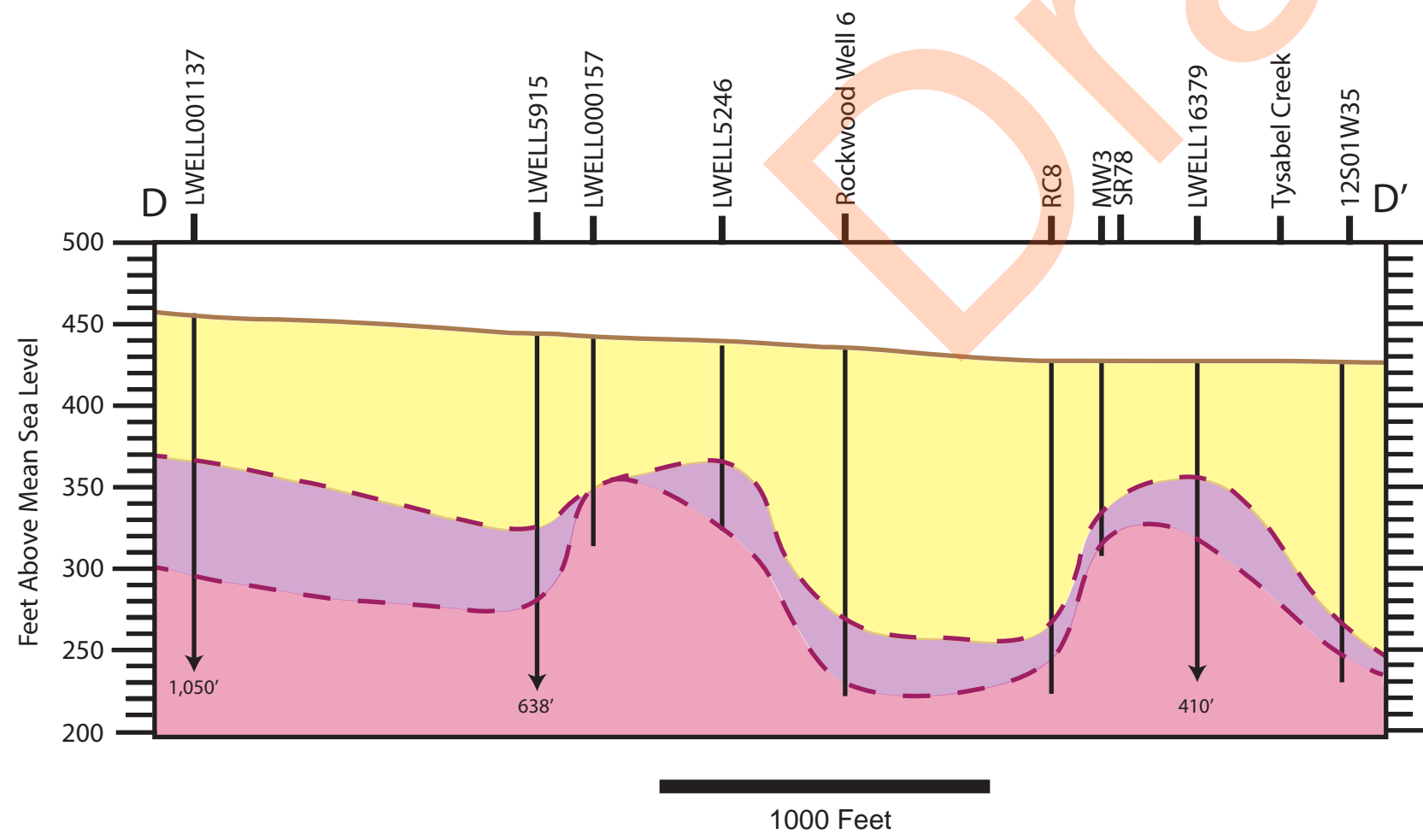
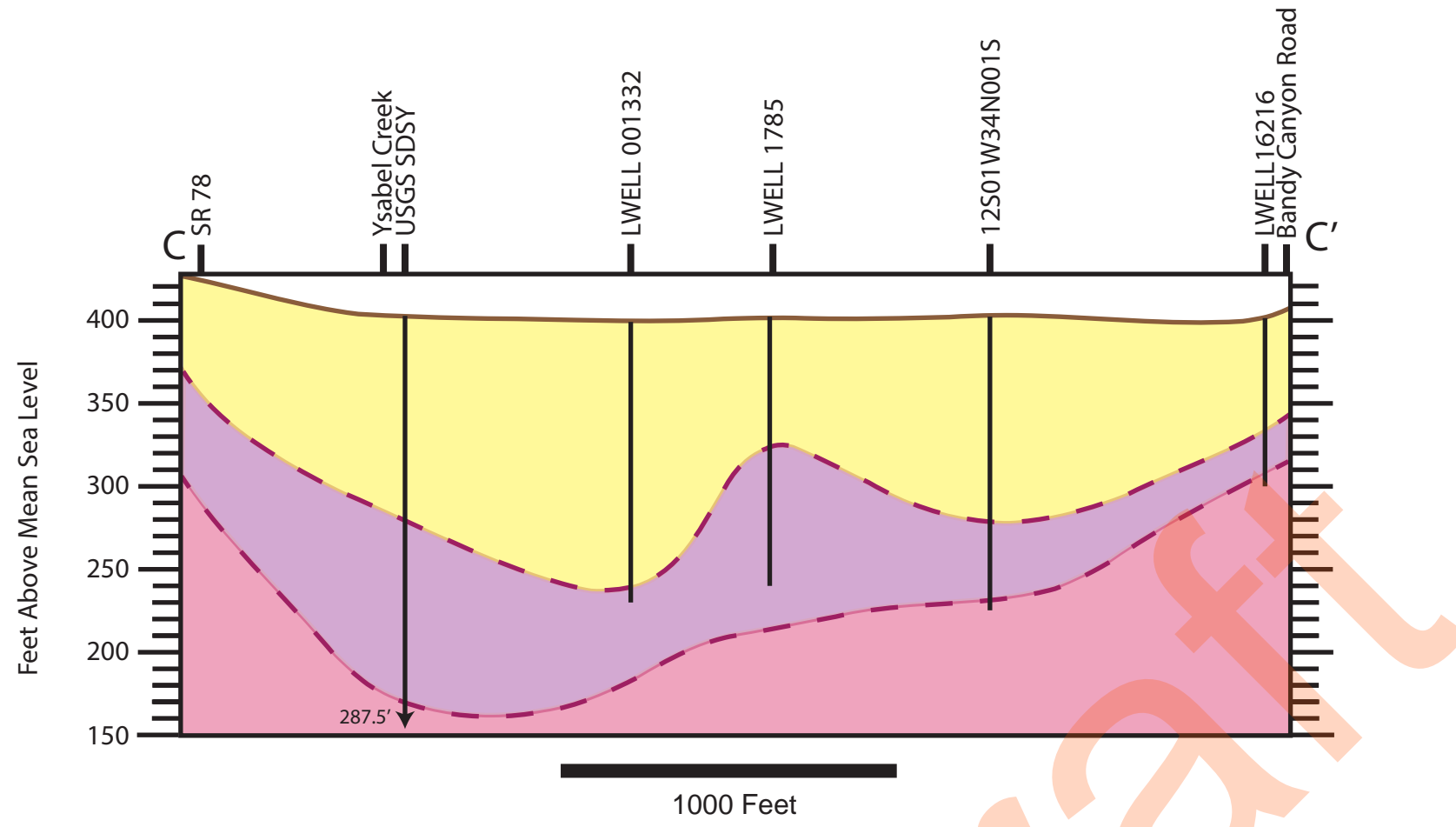


- LEGEND/NOTES**
- Qyv - Young alluvial valley deposits (Holocene to Late Pleistocene)
 - Weathered Bedrock (granite/granodiorite)
 - Kg(wm) - Woodson Mountain granodiorite
 - Groundwater Surface, Spring 2015

Figure 3 - Cross Sections A-A' and B-B'

San Pasqual Valley
Groundwater Management Plan
San Diego County, California

SNYDERGEOLOGIC



LEGEND/NOTES

- Qyv - Young alluvial valley deposits (Holocene to Late Pleistocene)
- Weathered Bedrock (granite/granodiorite)
- Kg(wm) - Woodson Mountain granodiorite

Figure 4 - Cross Sections C-C' and D-D'

San Pasqual Valley
Groundwater Management Plan
San Diego County, California