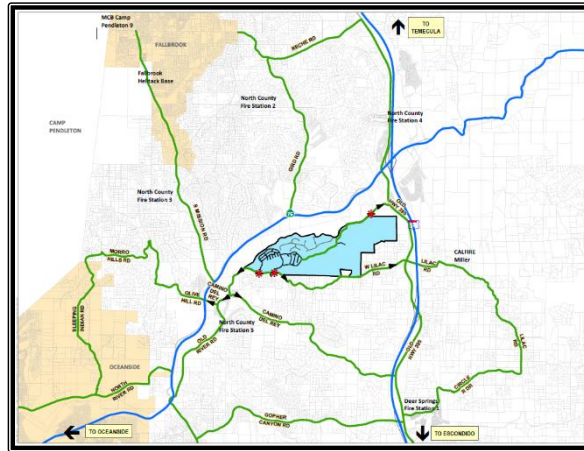


Conceptual Wildland Fire Evacuation Plan for the Ocean Breeze Community



Prepared for:

North County Fire Protection District
330 S. Main St.
Fallbrook, California 92054

On behalf of Applicant:

Peter Fagrell
Helios Property Solutions, LLC

Prepared by:

DUDEK
605 Third Street
Encinitas, California 92024

NOVEMBER 2019

Table of Contents

<u>SECTION</u>	<u>PAGE NO.</u>
1 QUICK REFERENCE – CONCEPTUAL WILDLAND FIRE EVACUATION PLAN.....	1
1.1 Nearest Medical Facilities.....	12
1.2 Register to Receive Emergency Alerts.....	13
1.3 Get Involved in Community Readiness	13
1.4 Evacuation Plan Purpose and Limitations	14
2 BACKGROUND	15
3 SAN DIEGO COUNTY EVACUATION PLANNING SUMMARY	17
3.1 Evacuation Response Operations	17
3.1.1 Evacuation Points and Shelters	17
3.1.2 Animal Evacuations	18
3.1.3 Temporary Refuge	18
3.1.4 Bonsall Unified School District – School Protection and Evacuation Plan Bonsall High School/Sullivan Middle School	19
4 THE OCEAN BREEZE EVACUATION ROAD NETWORK AND EVACUATION TIME ESTIMATES.....	21
4.1 Roadway Capacities and Evacuation Time Estimates.....	23
4.1.1 Evacuation Time Discussion	29
4.2 Evacuation Route Determination	31
5 OCEAN BREEZE RESIDENT FIRE/ EVACUATION AWARENESS.....	33
6 OCEAN BREEZE EVACUATION PROCEDURES.....	35
6.1 Relocation/Evacuation.....	35
6.2 Ocean Breeze Community Evacuation Baseline.....	36
6.3 Civilian and Firefighter Evacuation Contingency	36
6.3.1 Safety Zones	37
6.3.2 Temporary Firefighter Refuge Areas.....	38
6.4 Social Aspects of Wildfire Evacuation	39
6.4.1 Evacuation of Special Populations	39
6.4.2 Animal Evacuations	40
6.4.3 Re-Entry Procedures	41
7 LIMITATIONS.....	43
8 REFERENCES.....	45

APPENDICES

- A “Ready, Set, Go!” Personal Wildland Fire Action Guide
- B1-B4 Family Disaster Plan and Personal Survival Guide

FIGURES

1	Ocean Breeze Community Fire Evacuation Map.....	3
1A	NCFPD Evacuation Plan.....	5
2	Vicinity Map.....	7
3	Project Site Plan.....	9
4	Evacuation Time Calculation.....	23
5	Project Area Populations Associated with Different Land Uses.....	24
6	Lilac Fire Progression.....	25

TABLES

1	The Existing Ocean Breeze Community Roadway and Freeway Estimated Vehicle Capacities.....	23
2	Population and Evacuating Vehicle Estimates for Ocean Breeze and Vicinity Land Uses.....	27
3	Evacuation Route Usage and Time Estimates.....	29
4	The Ocean Breeze Evacuation Travel Timeframes*.....	29

1 Quick Reference – Conceptual Wildland Fire Evacuation Plan

NOTE: Pages 1 through 11 are the focus of the homeowner evacuation educational outreach efforts. These pages will be available on the community’s Homeowner’s Association (HOA) Website and provided to each homeowner at change of property ownership. The remainder of this evacuation plan provides more detailed analysis and background information intended for review by emergency management agencies, including this plan’s consistency with North County Fire Protection District’s (NCFPD) Evacuation Plan and standard San Diego County Office of Emergency Services evacuation planning.

Figure 1 illustrates the emergency evacuation routes potentially available to the Ocean Breeze community. Figure 1A provides the Fallbrook/Bonsall/De Luz and Rainbow area Evacuation map prepared by NCFPD. Figure 2 displays the Ocean Breeze’s vicinity location and Figure 3 is the Ocean Breeze site plan.

The community’s evacuation routes, potential wildfire exposure, and contingency refuge areas along evacuation routes for the residents and guests of the Ocean Breeze project are detailed below and in Figure 1.

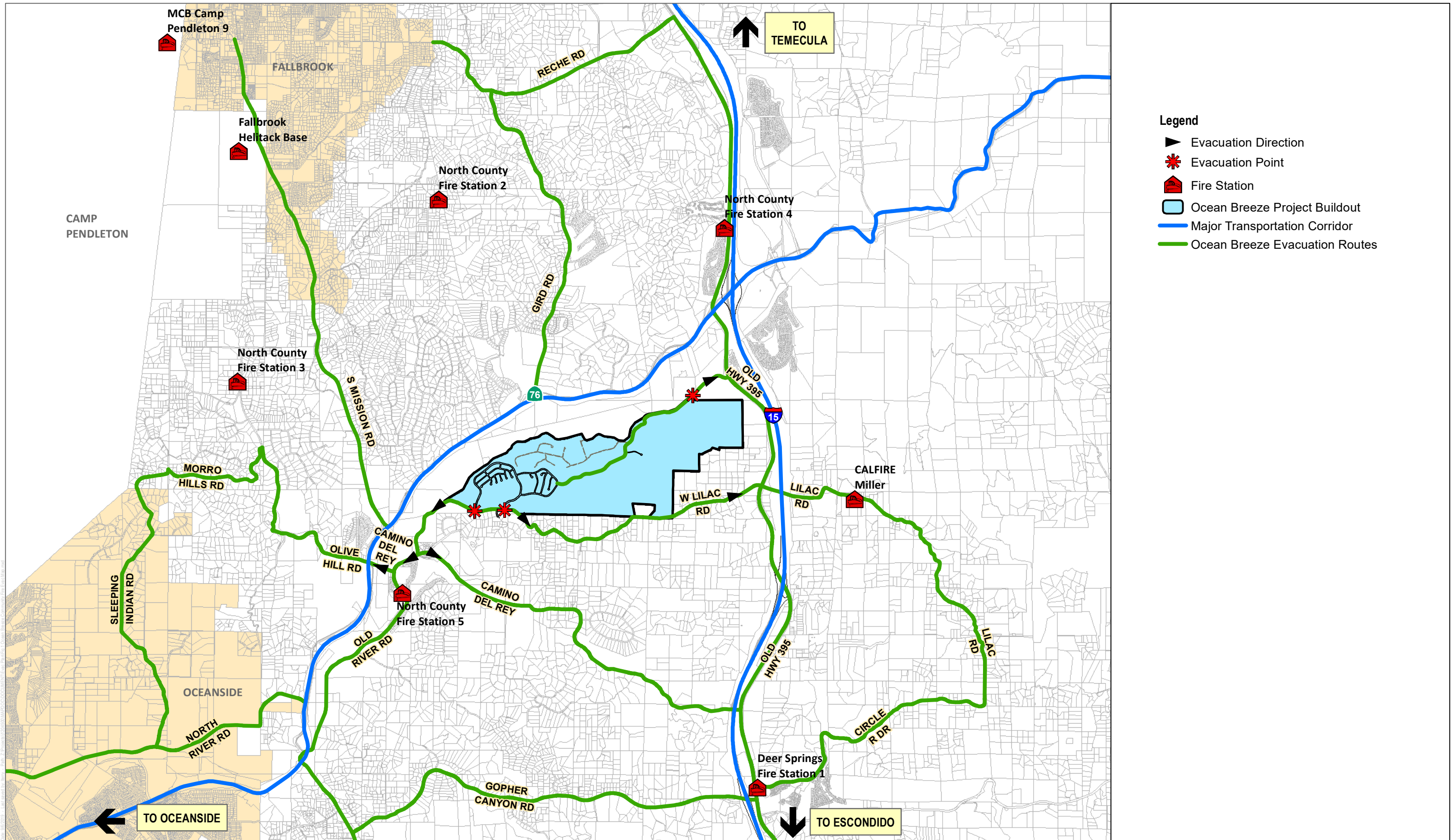
Residents should know available routes, stay informed, and follow directions provided by law enforcement or fire agencies, news media, and other credible sources. Do not rely on navigation apps that may inadvertently lead persons toward the approaching wildfire.

1. Egress to the east via W. Lilac Road

W. Lilac Road is the primary Ocean Breeze Community access road and one of the primary Ocean Breeze evacuation routes. Traveling east on W. Lilac Road allows residents to connect to Old Highway 395 and travel south to Interstate 15 or continue north on Old Highway 395. The W. Lilac Road/Old Highway 395 intersection also offers travel north to SR-76, which offers options for easterly or westerly travel. Heading east on SR-76 provides a second option to connect to Interstate 15, which allows residents an option to travel north or south on I-15.

- a. **Wildland Fire Exposure Rating: Moderate.** Exposure along W. Lilac Road is limited to primarily flashy fuels/grass, some agricultural fields, and maintained landscape. Sloping hillsides occur along W. Lilac Road, but terrain is favorable and would facilitate fire spread away from the road. Burn in this area would be of medium duration.
- b. **Potential Temporary Roadside Refuge(s):** Bonsall High School/Sullivan Middle School, Bonsall Elementary School.

INTENTIONALLY LEFT BLANK



- Legend**
- ▶ Evacuation Direction
 - * Evacuation Point
 - 🏠 Fire Station
 - ▭ Ocean Breeze Project Buildout
 - ▬ Major Transportation Corridor
 - ▬ Ocean Breeze Evacuation Routes

SOURCE: BASEMAP-SANGIS; DEVELOPMENT-PDC 2019



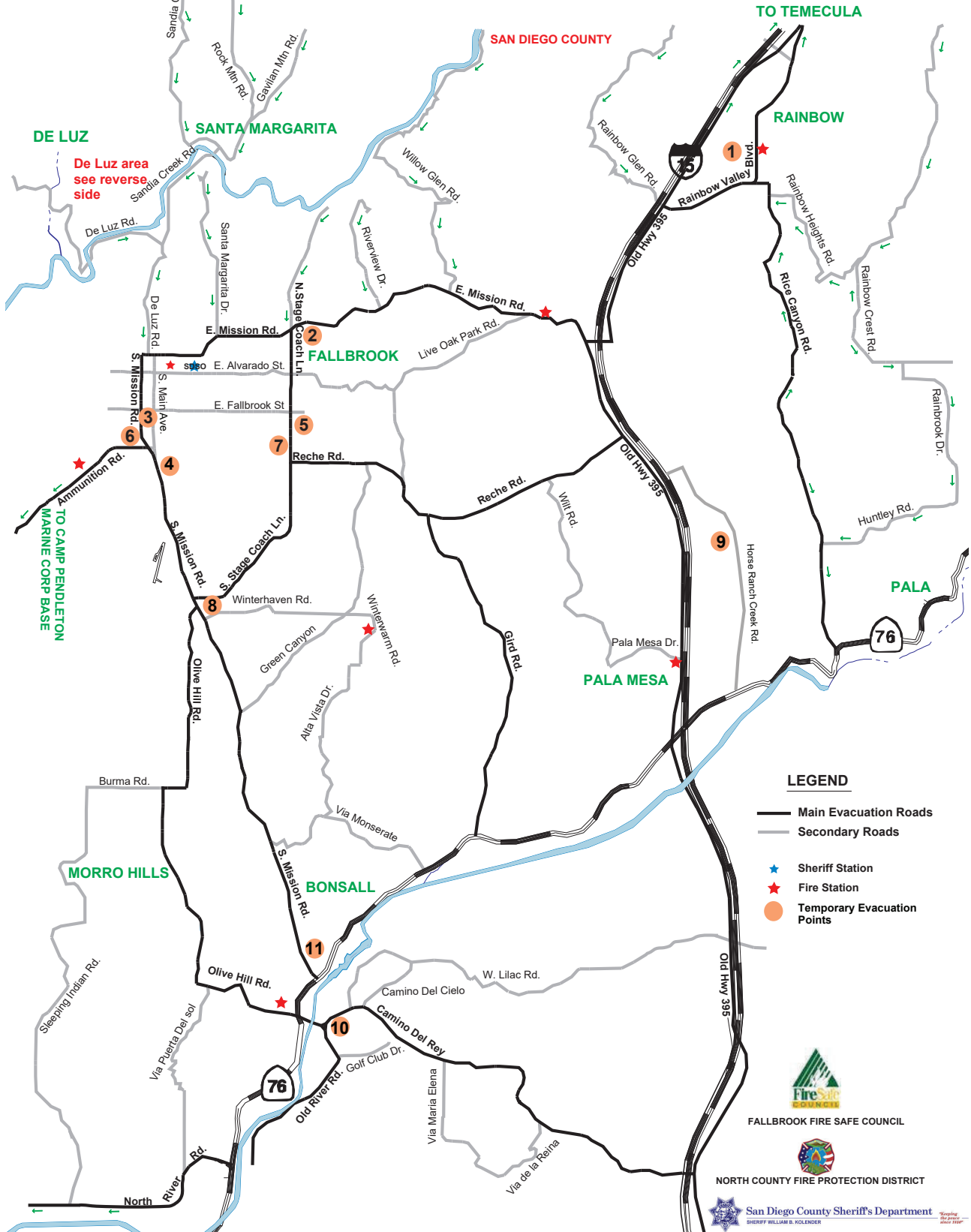
FIGURE 1

Ocean Breeze Community Fire Evacuation Map
 Wildland Fire Evacuation Plan for The Glens with The Junipers

INTENTIONALLY LEFT BLANK

FROM TEMECULA

FALLBROOK, BONSCALL, DE LUZ & RAINBOW AREA EVACUATION MAP



LEGEND

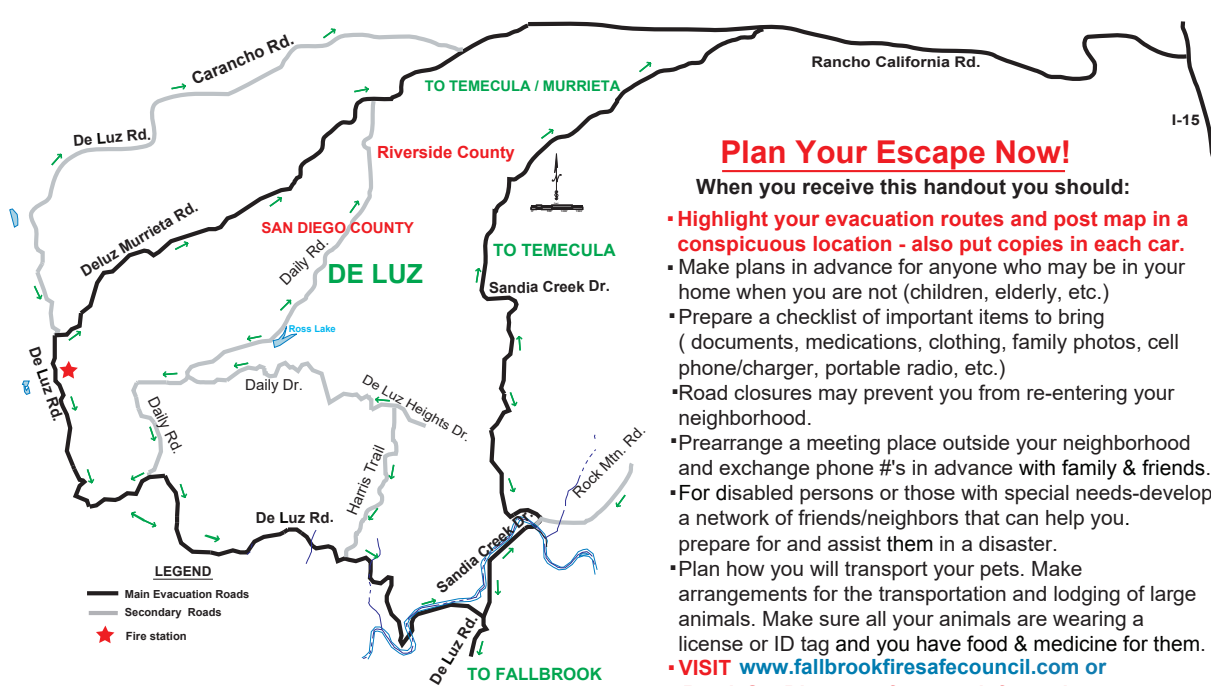
- Main Evacuation Roads
- Secondary Roads
- Sheriff Station
- Fire Station
- Temporary Evacuation Points



TEMPORARY EVACUATION POINTS:

- | | |
|---|---|
| 1 Vallecitos Elementary School 5211 5th. St. (Rainbow) | 7 Church of Jesus Christ LDS 621 S. Stagecoach Ln. |
| 2 William H. Frazier School 1835 Gum Tree Ln. | 8 Fallbrook Union High School 2400 S. Stagecoach Ln. |
| 3 Major Market 845 S. Main Ave. | 9 Palomar College 35090 Horse Ranch Creek Rd. |
| 4 Northgate Market 1346 S. Mission Rd. | 10 Bonsall Elementary School 5211 5th St. (Bonsall) |
| 5 St. Peter's Catholic Church 450 S. Stage Coach Ln. | 11 River Village Shopping Ctr. Hwy 76 & S. Mission Rd. |
| 6 Albertsons Market 1133 S. Mission Rd. | |

NOTE: USE OF TEMPORARY EVACUATION POINTS IS INTENDED FOR EMERGENCY REFUGE AND IS CASE-SPECIFIC, DEPENDING ON CURRENT FIRE CONDITIONS. THESE ARE NOT EVACUATION CENTERS UNLESS DESIGNATED BY EMERGENCY OFFICIALS. CALL 2-1-1 FOR INFORMATION.



Plan Your Escape Now!

When you receive this handout you should:

- Highlight your evacuation routes and post map in a conspicuous location - also put copies in each car.
- Make plans in advance for anyone who may be in your home when you are not (children, elderly, etc.)
- Prepare a checklist of important items to bring (documents, medications, clothing, family photos, cell phone/charger, portable radio, etc.)
- Road closures may prevent you from re-entering your neighborhood.
- Prearrange a meeting place outside your neighborhood and exchange phone #'s in advance with family & friends.
- For disabled persons or those with special needs-develop a network of friends/neighbors that can help you. prepare for and assist them in a disaster.
- Plan how you will transport your pets. Make arrangements for the transportation and lodging of large animals. Make sure all your animals are wearing a license or ID tag and you have food & medicine for them.
- VISIT www.fallbrookfiresafecouncil.com or ReadySanDiego.org for more information on evacuation planning.

DON'T WAIT TO BE TOLD TO EVACUATE!

Most civilians die as a result of waiting too long to evacuate! If you see smoke and it is blowing toward your home or if you feel threatened, **Evacuate!** Most of the roads in the area are long, narrow or dead end roads. If you wait too long you will experience significant traffic congestion and panic. Evacuate early and stay out of the area until authorities permit reentry.

How will you be told to Evacuate or get Fire Information ?

Register your phones by visiting www.readysandiego.org/alertsandiego. Tune radio KOGO AM-600, KFMB AM -760 or local T.V. stations 7/39 KNSD(NBC), 8 KFMB (CBS), 10 KGTV (ABC) 6 XETV (Fox). Fire Information may be obtained by visiting sdcountyemergency.com, via twitter at #CALFIRESANDIEGO or #NORTHCOUNTYFIRE or by calling the North County Fire information line at 760-723-2035, North County Dispatch JPA at 858-756-3006, or 2-1-1.

If you feel you have time to prepare for evacuation do the following:

- Place valuable documents, family mementos, medicines, glasses and other valuables in your car.
- Secure pets in carriers so departure is not delayed.
- Park your car facing out keeping the windows closed.
- Close the garage door but leave it unlocked.
- Disconnect Automatic garage door opener. Shut off propane (LPG) or natural gas valves.
- Close all windows and doors to prevent sparks from blowing inside.
- Close all interior doors to slow interior fire spread.
- To make sure your house is visible in heavy smoke, turn on porch and yard lights.
- Wear long sleeved cotton or wool clothing and long pants, gloves, and a cloth to cover your nose and mouth. Do not wear synthetic fabrics.
- Move combustibles, yard furniture, wood piles, etc. away from the exterior of the house.
- Attach garden hoses to spigots to reach all parts of house.
- Place aluminum ladder against the side of your house opposite the approaching fire for firefighters roof access.
- Cover windows and doors to prevent sparks from blowing inside.
- Pre-treat your home with fire blocking gel if available.

IF YOU ARE UNABLE TO EVACUATE

If you are inside your home...

- Move furniture away from windows and sliding glass doors to reduce ignition risk from radiant heat.
- Remove curtains and drapes. Metal blinds or special fire resistant window coverings may be closed to block radiant heat.
- Keep all doors and windows closed, leaving them unlocked.
- Stay inside your house, away from the outside walls.
- Stay in rooms at the opposite end of the structure from an approaching fire.
- Keep your entire family together and remain as calm as possible. Place wet towels to seal the door of the room from smoke and to breathe through.

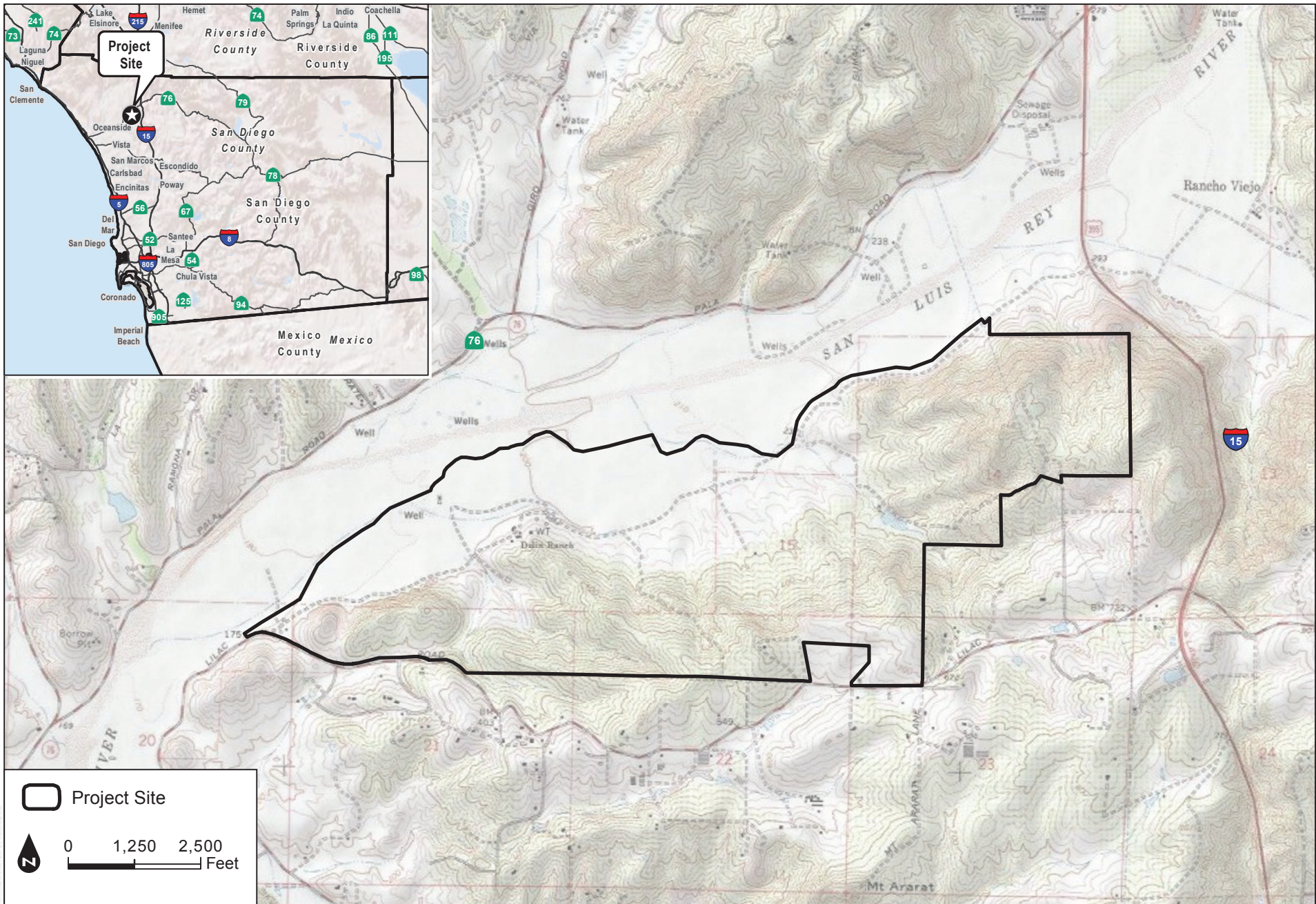
**** If it gets hot inside your house, the heat is even worse outside. If your house catches on fire, a wildfire will likely pass before your house is substantially damaged, stay indoors!**

If you are trapped in your car by fire while attempting to evacuate...

- Leave your car running in Park or neutral with emergency brake set.
- Remember: A car needs oxygen to operate so avoid parking near vegetated areas, canyons, or inside turns on roads as they channel wildfire.
- Close all windows and vents, cover yourself with a blanket or jacket and lie on the floor.

Once the fire has passed...

- Account for the safety of every person
- Check the exterior of your home, roof, and attic for embers, and extinguish immediately.
- Keep doors & windows closed; continue to check your home and yard for burning embers for at least 12 hours.



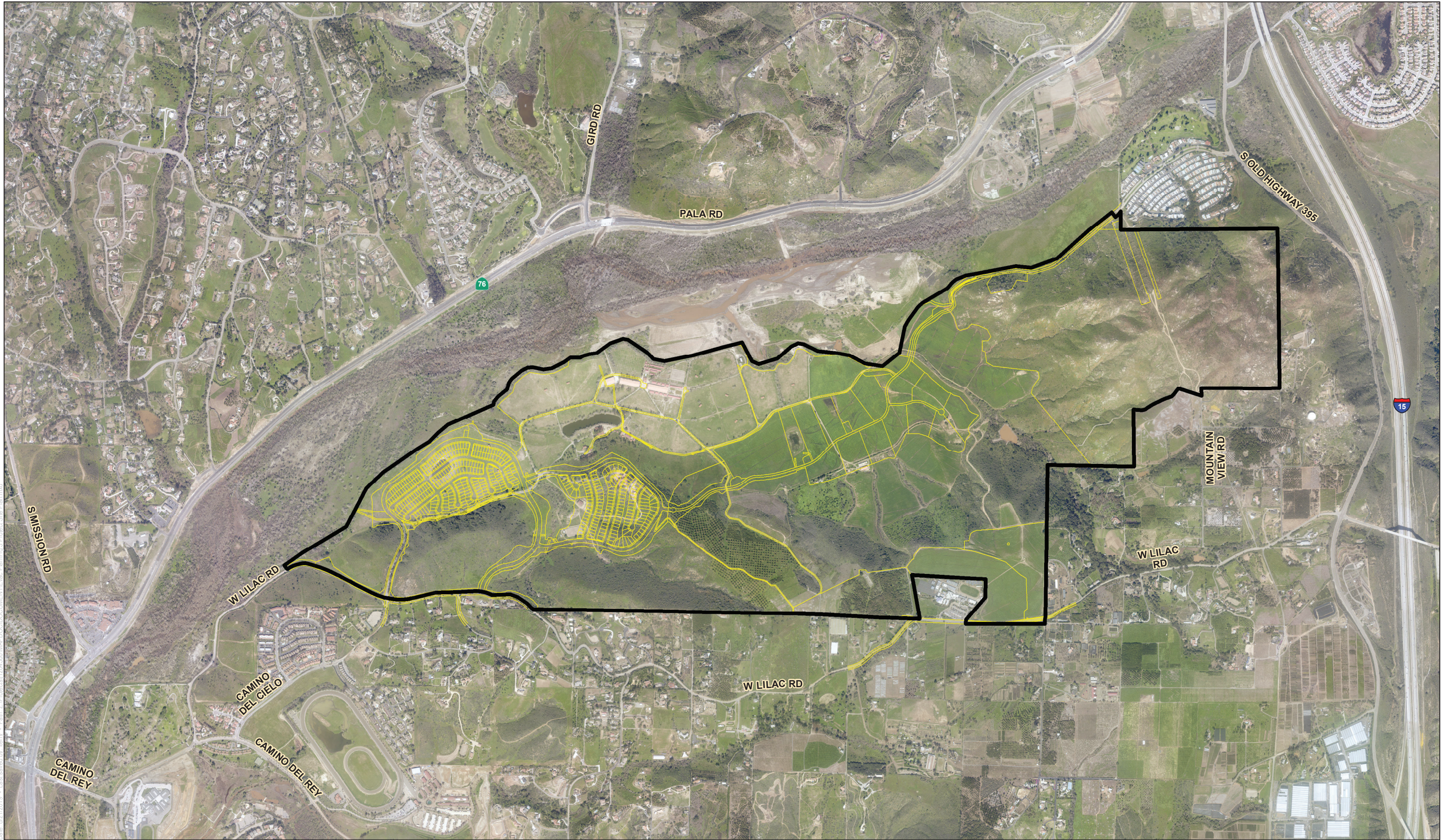
Document Path: Z:\Projects\1204500\MAPDOC\DOCUMENT\Vac Plan\Fig 2 Vicinity Map.mxd

SOURCE: USGS 7.5 MINUTE SERIES, BONSALL QUADRANGLE
 TOWNSHIP 10 SOUTH, RANGE 3 WEST, SECTIONS 11, 14-16, 20-23



FIGURE 2
 Vicinity Map
 Conceptual Wildland Fire Evacuation Plan for the Ocean Breeze Community

INTENTIONALLY LEFT BLANK



Date: 8/21/2019 - Last saved by: Item - Path: Z:\Projects\17045001\MAPDOC\DOCUMENT\TERRA\Plan\EP3_Plan.mxd

SOURCE: AERIAL- BING MAPPING SERVICE



FIGURE 3

Project Site Plan

Conceptual Wildland Fire Evacuation Plan for the Ocean Breeze Community

INTENTIONALLY LEFT BLANK

2. Egress to the west/southwest via W. Lilac Road

W. Lilac Road intersects Camino del Rey. Heading west on Camino del Rey (approximately 6.2 miles) provides access to SR 76, which offers travel west into Oceanside and the coastal cities, eventually connecting with I-5. East-bound Camino del Rey winds through Bonsall to Old Highway 395, with access to I-15 within a short distance north or south.

- a. **Wildland Fire Exposure Rating: Moderate.** Exposure along W. Lilac Road and Camino del Rey are limited to open areas of native vegetation, residential communities and maintained landscapes. Natural vegetation occurs within the San Luis Rey River northwest of the development.
- b. **Potential Temporary Roadside Refuge:** Bonsall Elementary School grounds and parking lot, accessible via Camino del Rey.

Egress to the northeast via Vessels Ranch Road, Interim Emergency Road and Dulin Road – Vessels Ranch Road, the Interim Emergency Road and Dulin Road connect to Old Highway 395, SR76 and I-15. Driving on the Interim Emergency Road, continuing on Dulin Road will require the resident to drive through three (3) vehicle access gates. These access gates shall provide unrestricted egress during an emergency and will operate on a fail-safe open system. The gates will have sensors for vehicles; also electric, solar and/or battery power, which allows all gates on this road to open for emergency egress via Dulin Road in the event of power failure. Please note that the access gate at far northeast end of Dulin Road provides final vehicle/pedestrian egress thru the Monserate Mobile Home Park neighborhood. East of the OBR project, Dulin Road connects to Old Highway 395; driving northerly connects to SR-76 and Interstate 15; or driving southerly connects to Old Highway 395 and Interstate 15. Evacuation Signage will be provided along Dulin Road at the gate directing evacuees from Old Highway 395 to W. Lilac Road.

- a. **Wildland Fire Exposure Rating: Low to Moderate.** The road includes minimal exposure to wildland fuels. This exposure would be limited in extent due to flat and favorable terrain, short burn duration, and wind alignment, which places fuels to the east of the road.
- b. **Potential Temporary Roadside Refuge:** Equestrian Fields /Open Space located with equestrian area adjacent to Ocean Breeze residential community.

These evacuation routes would be available to Ocean Breeze, residents of the Monserate Mobile Home Park and other area residents during a wildfire evacuation. Short notice events, where a fire ignites close to the area may affect evacuation route availability. Each potentially available evacuation route includes varying degrees of potential exposure to wildland fire and therefore, varying likelihood that it may or may not be available in a short-notice evacuation, as noted above. In the event that one or more roads are not considered safe for evacuation, contingency options, including temporary refuge options, will be available to the Ocean Breeze Community.

It must be recognized that wildfire and other emergencies are often fluid events and that the need for evacuations are typically determined by on-scene first responders or by a collaboration between first responders and designated emergency response teams, including Office of Emergency Services and the Incident Command established for larger emergency events. As such, and consistent with all emergency evacuation plans, this Emergency Evacuation plan is to be considered a tool that supports existing pre-plans and provides for citizens who are familiar with the evacuation protocol, but is subservient to emergency event-specific directives provided by agencies managing the event.

1.1 Nearest Medical Facilities

Tri City Medical Center (11 miles)

4002 W. Vista Way
Oceanside, California 92056

Directions:

- W. Lilac Road (northwest)
- Turn Right on Camino del Rey /stay Right toward CA-76
- Turn Left onto CA-76 West
- Exit College Blvd. and Turn Left
- Turn Left on Thunder Road
- Turn Right onto Vista Way - Hospital on Right

Palomar Hospital (18 miles) (Palomar is a Level-1 Trauma Center)

2185 Citracado Parkway
Escondido, California 92029

Directions:

- Drive Southeast on W. Lilac Road
- Turn Right on Old Highway 395
- Take the ramp onto I-15 South (11.1 miles)
- Exit onto CA-78 West toward Oceanside (1 MILE)
- Take exit 15 onto Nordahl Road
- Turn Left onto Nordahl Road
- Continue onto Auto Park Way
- Turn Right onto Citracado Parkway
- Hospital located on Right

Naval Hospital Camp Pendleton (15 miles)

200 Mercy Circle
Oceanside, California 92055

Directions:

- Head Northwest on W. Lilac Road
- Turn Right onto Camino del Rey /stay Right toward CA-76
- Turn Left onto CA-76 West –continue for 9.3 miles on CA-76
- Turn Left and merge onto Interstate 5 North

- Take Interstate 5 to Marine Corps Base Camp Pendleton exit
- After passing through the main gate of the Base, continue on Vandegrift Blvd. for 0.6 miles.
- Hospital is located on the right side off of Mercy Circle.

See also Local Urgent Care facilities, including:

Vista Immediate Care 950 E. Vista way
Vista, California 92084

Concentra Urgent Care
860 West valley Parkway, Suite 150
Escondido, California 92025

1.2 Register to Receive Emergency Alerts

The NCFPD utilizes a Reverse 911 system provided by the County of San Diego and known as AlertSanDiego for its Community Emergency Notification System. AlertSanDiego is a countywide standard system that is managed as a regional asset by the County of San Diego Office of Emergency Services. In the event of a wildfire within the proximity of the Ocean Breeze Community, the Incident Commander (IC) will contact the San Diego Sheriff Department (SDCSD) and other law enforcement agencies that may be needed to support an emergency situation (including San Diego County Sherriff's Department (SDCSD) and California Highway Patrol. The SDCSD's communications center has the responsibility to request activation of the AlertSanDiego system and release an emergency notification to the affected population. Therefore, the Ocean Breeze community residents are strongly advised to register their landlines, mobile phone numbers and email addresses with the Reverse 911, AlertSanDiego system (<http://www.readysandiego.org/AlertSanDiego/>) in order to receive emergency evacuation instructions.

The Ocean Breeze Community is part of the greater San Diego media market, and the media outlets will also be a good source of information via television and radio. Emergency situations are covered by media outlets and information is disseminated guiding resident response. In addition, the San Diego Emergency Alert System (EAS) is county -wide and broadcasts emergency information via two radio stations: KOGO AM 600 and KLSD AM 1360. The County of San Diego also provides residents with wildfire and evacuation information by subscribing to the County e-alerts and Facebook and twitter pages (<http://www.sandiegocountyemergency.com>). Additional news outlets include:

- Channel 10 News: 10news.com
- Channel 8 News: cbs8.com
- Channel 19 – Cox Communications
- Channel 24 – Time Warner Cable
- Channel 99 – AT&T

1.3 Get Involved in Community Readiness

Ocean Breeze residents are encouraged to form a volunteer Neighborhood Emergency Response Team through the Community Emergency Response Team (CERT) program (<https://www.northcountycert.com/>). In addition, the Ocean Breeze Community HOA will organize annual evacuation public outreach; engage directly with organizations such as Fire

Safe Council of San Diego County; and maintain a fire safe page on the Community webpage, which will include this Emergency Evacuation Plan as well as links to important citizen preparedness information.

This evacuation plan is prepared specifically for the Ocean Breeze Community and focuses on wildland fire evacuations, although many of the concepts and protocols will be applicable to other emergency situations. Ultimately, this plan will be used by the Ocean Breeze HOA to educate community residents as to their evacuation approach during wildfires and other similar emergencies. It is important for the Ocean Breeze residents to understand the importance of being prepared, so if/when the time comes where evacuation is necessary, they will be able to systematically implement their evacuation plan. Some actions the community residents can complete in advance include:

Follow the “Ready, Set, Go!” model developed for wildfire evacuations.

- Create an escape plan from the residence, as well as familiarity with escape routes out of the area.
- Create a car emergency kit, including cell phone charger, flashlight, jumper cables, water, and food.
- Gather important paperwork, including birth and marriage certificates, account documents, passports, Social Security cards, and any other important documents.
- As time allows, make sure to secure your home by locking all doors and windows, and unplugging electrical equipment, such as appliances and electronics.

Sample emergency preparedness resources available to the Ocean Breeze residents are provided in Appendix A (“Ready, Set, Go!” Wildland Fire Action Guide) and Appendices B-1 and B-2 (Family Disaster Plan and Checklists). In addition, residents are encouraged to become familiar with the concepts detailed at the following Websites:

- Emergency Information for Bonsall and Fallbrook : <http://www.ncfire.org>
- “Ready, Set, Go!” Wildland Fire Action Guide: <https://www.sandiego.gov/sites/default/files/rsg-english.pdf>
- Red Cross Emergency Planning: <http://www.redcross.org/get-help/how-to-prepare-for-emergencies/make-a-plan>
- Hazardous Materials Emergency Preparedness: <https://www.ready.gov/hazardous-materials-incidents>
- Building a disaster kit: <http://www.redcross.org/get-help/prepare-for-emergencies/be-red-cross-ready/get-a-kit>
- Making a Plan Checklist: <https://www.ready.gov/make-a-plan>
- Family Communication Plan: https://www.fema.gov/media-library-data/1440449346150-1ff18127345615d8b7e1effb4752b668/Family_Comm_Plan_508_20150820.pdf
- San Diego County Emergency Site: sdcountyemergency.com

1.4 Evacuation Plan Purpose and Limitations

Wildfire and other emergencies are often fluid events and the need for evacuations are typically determined by on-scene first responders or by a collaboration between first responders and designated emergency response teams, including Office of Emergency Services and the Incident Command (IC) established for larger emergency events. As such, and consistent with all emergency evacuation plans, this Emergency Evacuation Plan is to be considered a tool that supports existing pre-plans and provides for citizens who are familiar with the evacuation protocol, but is subservient to emergency event-specific directives provided by agencies managing the event.

2 Background

This Ocean Breeze Conceptual Wildland Fire Evacuation Plan (CWFEF) has been prepared based on the North County Fire Protection District Emergency Operations Procedures, which closely follow the Unified San Diego County Emergency Services Organization and County of San Diego Operational Area Emergency Operations Plan (EOP), including its Evacuation Annex.

To establish a framework for implementing well-coordinated evacuations, the County of San Diego Office of Emergency Services (OES) developed an Evacuation Annex Q as part of the Area EOP (San Diego County 2018). Large-scale evacuations are complex, multi-jurisdictional efforts that require coordination between many agencies and organizations. Emergency services and other public safety organizations play key roles in ensuring that an evacuation is effective, efficient, and safe. San Diego County OES is charged with emergency management and is responsible for maintaining situational awareness of threats that may necessitate a citizen evacuation. OES coordinates with cities during emergency events.

Evacuation is a process by which people are moved from a place where there is immediate or anticipated danger, to a safer place, and offered temporary shelter facilities. When the threat passes, evacuees are able to return to their normal activities, or to make suitable alternative arrangements.

Evacuation during a wildfire is not necessarily directed by the fire agency, except in specific areas where fire personnel may enact evacuations on scene. The San Diego County Sheriff Department, California Highway Patrol (CHP), and other cooperating law enforcement agencies have primary responsibility for evacuations. These agencies work closely within the Unified Incident Command System, with the County Office of Emergency Services, and responding fire department personnel who assess fire behavior and spread, which should ultimately guide evacuation decisions. To that end, SDCSD, North County Fire Protection District (NCFPD), San Diego County Public Works, Planning, Emergency Services Departments, and California Department of Transportation (Caltrans), throughout San Diego County.

Every evacuation scenario will include some level of unique challenges, constraints, and fluid conditions that require interpretation, fast decision making, and alternatives. For example, one roadway incident that results in blockage of evacuating vehicles may require short-term or long-term changes to the evacuation process. Risk is considered high when evacuees are evacuating late, and fire encroachment is imminent. This hypothetical scenario highlights the importance of continuing to train responding agencies, model various scenarios, educate the public, and take a conservative approach to evacuation decision timelines (evacuate early) while providing contingency plans.

Equally important, the evacuation procedures should be regularly updated with lessons learned from actual evacuation events, as new technologies become available that would aid in the evacuation process, and as changing landscapes and development patterns occur adjacent to the Project Area that may impact how evacuation is accomplished. This Ocean Breeze CWFEF is consistent with the County's and City's evacuation planning standards and can be integrated into a regional evacuation plan in the event area officials and stakeholders (NCFPD, SDCSD, Cal Fire, OES, and others) complete one.

As demonstrated during evacuations throughout San Diego County over the last 15 years, an important component to successful evacuation is early assessment of the situation and early notification via managed evacuation declarations. San Diego County utilizes early warning and informational programs to help meet these important factors. Among the methods available to citizens for emergency information are: radio, television, social media/internet, neighborhood patrol car public address notifications, and Reverse 9-1-1 or AlertSanDiego.

INTENTIONALLY LEFT BLANK

3 San Diego County Evacuation Planning Summary

This CWFEF incorporates concepts and protocols practiced throughout San Diego County that have been adopted by North County Fire Protection District. The San Diego County Evacuation Annex Q (2018) follows basic protocols set forth in the County's Operation Area Emergency Operations Plan and the California Master Mutual Aid Agreement, which dictate who is responsible for an evacuation effort and how regional resources will be requested and coordinated.

First responders are responsible for determining initial protective actions before EOCs and emergency management personnel have an opportunity to convene and gain situational awareness. Initial protective actions are shared/communicated to local EOCs and necessary support agencies as soon as possible to ensure an effective, coordinated evacuation.

During an evacuation effort, the designated County Evacuation Coordinator is the SDCSD, who is also the Law Enforcement Coordinator. The Evacuation Coordinator will be assisted by other law enforcement and support agencies. Law enforcement agencies, highway/road/street departments, and public and private transportation providers will conduct evacuation operations. Procurement, regulation, and allocation of resources will be accomplished by those designated.

A detailed explanation of procedures and protocols for conducting an evacuation may be found in the San Diego County Evacuation Annex located at (provide website URL) https://www.sandiegocounty.gov/content/dam/sdc/oes/emergency_management/plans/op-area-plan/2018/2018-Annex-Q-Evacuation.pdf.

3.1 Evacuation Response Operations

An evacuation of any area requires significant coordination among numerous public, private, and community/non-profit organizations. Wildfire evacuations will typically allow time for responders to conduct evacuation notification in advance of an immediate threat to life safety; giving residents time to gather belongings and make arrangements for evacuation. On the other hand, other threats, including wildfires igniting nearby, may occur with little or no notice and certain evacuation response operations will not be feasible. Evacuation assistance of specific segments of the population may also not be feasible.

3.1.1 Evacuation Points and Shelters

When the SDCSD or IC implements an evacuation order, they coordinate with the responding fire agency (e.g., NCFPD), the EOC, and others to decide on a location to use as a Temporary Evacuation Point (TEP). The Sheriff's Department Communication Division will utilize the AlertSanDiego system and will notify local television and radio stations; the County will use their social media pages and will direct evacuees to the established TEPs or shelters, which may include schools or other facilities. TEPs will provide basic needs such as food, water, and restrooms. In addition to designated shelters, other points of temporary refuge may include large, well known sites such as shopping centers and libraries. Subject to field decisions by SDCSD, possible shelters that could provide short-term refuge for evacuated residents of Ocean Breeze Ranch might include:

- Sullivan Middle School/Bonsall High School – 7350 West Lilac Road, Bonsall
- U.S. Post Office and Shopping Center at 5521 CA-76 West in Bonsall

- River Village San Luis Rey Shopping Center at 5256 S Mission Rd. Bonsall
- Bonsall Elementary School at 31555 Old River Rd. Bonsall
- Equestrian Facility if Fire or Law Enforcement Personnel Direct this approach

Other refuge sites are available within urbanized areas of nearby cities such as Fallbrook, Oceanside, Vista , and other developed communities primarily to the south, west, and east of the Ocean Breeze Community. Potential evacuation shelters and assembly areas¹ that could provide a longer stay for refuge are:

- Fallbrook High School at 2400 S. Stage Coach Lane in Fallbrook
- East Valley Community Center at 2245 E. Valley Parkway in Escondido
- Oceanside High School at 1 Pirates Cove Way in Oceanside
- Palomar College at 1140 West Mission Road in San Marcos
- Great Oak High School at 32555 Deer Hollow Way in Temecula

If there are residents unable to evacuate and need transportation assistance to get to a TEP or shelter, the SDCSD or IC may establish transportation points to collect and transport people without transportation resources to evacuation points. Transportation should be accessible to all populations, including people with disabilities and other access and functional needs.

3.1.2 Animal Evacuations

The Pets Evacuation and Transportation Standards Act of 2006 amends the Stafford Act, and requires evacuation plans to take into account the needs of individuals with household pets and service animals prior to, during, and following a major disaster or emergency. Although evacuation planning attempts to include the needs of pets and animals, the primary responsibility of public agencies is the protection of human life and prevention of loss or damage to property. Primary responsibility for evacuation of pets and animals ultimately rests with the owners of such animals.

The San Diego County Department of Animal Services (DAS) has plans in place to transport and shelter pets in a disaster under Annex O of the OA EOP, including the Animal Control Mutual Aid Agreement. Animal Control Officers, the San Diego Humane Society, and private animal care shelters will assist in the rescue, transport, and sheltering of small and large animals. In addition, potential volunteer resources and private groups should be identified and tracked in WebEOC. Only non-emergency resources and personnel, such as public and private animal services agencies, will be used to rescue and transport animals during an evacuation effort.

In most cases, DAS and the OA EOC will coordinate and attempt to co-locate animal shelters with people shelters. The Ocean Breeze Equestrian Facility will not attempt to evacuate horses as it offers the ability to shelter horses on the site. Additional Ocean Breeze- specific animal evacuation information is provided in Section 6.4.2.

3.1.3 Temporary Refuge

Temporary Refuge is the practice of going or remaining indoors during or following an emergency event. This procedure is recommended if there is little time for the public to react to an incident and it is safer for the public to stay indoors for a short time rather than travel outdoors. Seeking temporary refuge has the advantage that it can

¹ These evacuation centers were activated during the 2017 Lilac Fire (County of San Diego 2018).

be implemented immediately, allowing people to remain in their familiar surroundings and providing individuals with everyday necessities such as telephone, radio, television, food, and clothing. However, the amount of time people can remain in a place of temporary refuge is dependent upon availability of food, water, medical care, utilities, and access to accurate and reliable information.

The decision on whether to evacuate or seek temporary refuge is carefully considered with the timing and nature of the incident (San Diego County 2014). Taking temporary refuge on site is the preferred method of protection for people that are not directly impacted or in the direct path of a hazard. This will reduce congestion and transportation demand on the major transportation routes for those who are truly in danger and therefore have been directed to evacuate. Modern, newly constructed communities incorporate redundant sources of water for fighting fires, ignition-resistant construction, fuel modification zones, and other features which work together as a system to provide onsite defensibility against fire. For this reason, fire and law enforcement personnel may elect to instruct residents to take temporary refuge in their homes at the Ocean Breeze Community in the event this is determined to be safer than evacuating.

3.1.4 Bonsall Unified School District – School Protection and Evacuation Plan Bonsall High School/Sullivan Middle School

The Bonsall Unified School District regularly updates its Wildfire School Protection and Evacuation Plan (SPEP). The SPEP describes school administration and student/parent responsibilities during a wildfire emergency. According to the SPEP, there are three potential actions that may be enacted during a wildfire:

- a. **Early Dismissal** – if a wildfire is burning in areas that could threaten the BUSD campus off W. Lilac Road, early dismissal may be enacted so that students may be picked up by parents or taken to alternate locations until they can be picked up.
- b. **Evacuation** – if a wildfire is burning and its movement indicate that it will threaten the school, an evacuation may be declared. According to the SPEP, evacuations would include the school moving students to reunification sites where parents would pick them up. Parents are instructed to not arrive at the W. Lilac Road campus, and in some evacuation scenarios, law enforcement may elect to block the road to incoming traffic. Nevertheless, based on past evacuation events, a percentage of the student’s parents disregarded school instructions and went to the campus to pick up their children. It is unclear if stricter controls will be implemented going forward, but this Evacuation Plan assumes that approximately 30 percent of the parents may arrive at the campus.
- c. **Shelter in Place** – the BUSD indicates that in cases where evacuation is not possible due to the location of the fire or unsafe conditions on the roadways, BUSD will shelter students and staff in place, keeping people in designated ignition resistant structures or open areas away from combustible materials.

INTENTIONALLY LEFT BLANK

4 The Ocean Breeze Evacuation Road Network and Evacuation Time Estimates

Wildfire emergencies that would be most likely to include an evacuation of the Ocean Breeze community would be large wildfires approaching through the San Luis Rey Riverbed from the east under extreme fire weather conditions, or from wildfires approaching from the west with potential to spot into the project. These fires are often wind driven and occur during declared Red Flag Warning periods where low humidity and high winds facilitate fire ignition and spread. If a wildfire ignites to the east/northeast and is fanned by fire weather conditions, an early evacuation of the area may occur as many as several or more hours prior to actual threatening conditions at the Ocean Breeze site. Fires occurring on typical weather days have been very successfully controlled at small sizes due to the slower fire spread and fast response and would not typically trigger a need to evacuate the project. Fires burning in the open space fuels to the west of the Ocean Breeze community on a typical day would be much lower threat to the Project and would have a reduced evacuation potential.

If a wildfire ignited closer to the Ocean Breeze community during weather that facilitates rapid fire spread, a different evacuation approach would need to be considered. Because it is preferred to evacuate long before a wildfire is near, and in fact, history indicates that most human fatalities from wildfires are due to late evacuations when evacuees are overtaken on roads, it is prudent to consider a contingency option. For example, if a wildfire is anticipated to encroach upon the community in a timeframe that is shorter than would be required to evacuate all residents, then options available to responding fire and law enforcement personnel should include 1) partial relocation where residents in perimeter homes are temporarily relocated to internal areas or nearby developed areas, or 2) temporary refuge where residents are instructed to remain in their protected homes or at a designated site, possibly including the Equestrian Facility, while firefighters perform their structure protection function.

The Ocean Breeze community is located within an area that is subject to occasional wildfires, but based on the agricultural and equestrian uses on the north, south, and east and developed areas to the west, the wildfire potential is considered reduced. Similarly, fire intensity would be expected to be low to moderate in areas outside of the San Luis Rey River channel. This reduced fire behavior would be expected to facilitate evacuations as well as potential on-site sheltering, if considered safer than a short-notice evacuation.

This approach is consistent with San Diego County's (2014) Evacuation approach which states *"Due to the nature of the threats requiring an evacuation, there may be insufficient time to perform an early evacuation of the area and shelter-in-place instructions may need to be provided."* Although not a designated shelter-in-place community, the structures in the Ocean Breeze Community include the same level of ignition resistance and landscape maintenance, are defensible against the short duration wildfire exposure anticipated, and are designed to require minimal resources for protection, which enables these contingency options that may not be available to other vicinity communities.

The Ocean Breeze roads and adjacent road circulatory system will be consistent with other new communities in their ability to effectively handle average daily trips generated by the project. However, as evidenced by mass evacuations in San Diego County and elsewhere, even with roadways that are designed to the code requirements, it may not be possible, or necessary to move large numbers of persons at the same time. Road infrastructure throughout the United States, and including San Diego County, is not designed to accommodate a short-notice, mass evacuation (FEMA 2008). The need for evacuation plans, pre-planning, and tiered or targeted and staggered evacuations becomes very important for improving evacuation effectiveness.

Among the most important factors for successful evacuations in urban settings is control of intersections downstream of the evacuation area. If intersections are controlled by law enforcement, barricades, signal control, firefighters or other means, potential backups and slowed evacuations can be minimized. Another important aspect of successful evacuation is a managed and phased evacuation declaration. Evacuating in phases, based on vulnerability, location, or other factors, enables the subsequent traffic surges on major roadway to be smoothed over a longer time frame and can be planned to result in traffic levels that flow better than when mass evacuations include large evacuation areas at the same time. This plan defers to Law Enforcement and OES to appropriately phase evacuations and to consider the vulnerability of communities when making decisions. For example, newer communities in the area, including Ocean Breeze, will offer its residents a high level of fire safety on site (refer to the Ocean Breeze Fire Protection Plan prepared by Firewise2000, 2019), along with options for firefighter safety zones and temporary on-site refuge as a contingency, as discussed further in this plan.

The Ocean Breeze planned community interior road network and the existing regional road system that it interconnects with provide multi-directional primary and secondary emergency evacuation routes consistent with most communities in this area. Consistent with the County of San Diego evacuation planning annex (2014), major ground transportation corridors in the area will be used as primary evacuation routes during an evacuation effort. The road systems were evaluated to determine the best routes for fire response equipment and “probable” evacuation routes for relocating people to designated safety areas. The primary roadways that would be used for evacuation from Ocean Breeze are W. Lilac Road, Camino del Rey, and Old Highway 395. These roads provide access to urbanized areas and major traffic corridors including indirectly to I-5, I-15, and SR-76.

During an emergency evacuation from the Ocean Breeze community, the primary and secondary roadways may be providing citizen egress while responding emergency vehicles are inbound. Because the roadways are all designed to meet or exceed County of San Diego Consolidated Fire Code or NCFPD requirements, including 12-foot-wide, unobstructed travel lanes, shoulders, vehicle turnouts, adequate parking, turning radius, grade maximums, signals at intersections, and roadside fuel modification zones, potential conflicts that could reduce the roadway efficiency are minimized, allowing for smoother evacuations. Project-planned improvements to Dulin Road would provide additional benefits to the existing Monserate Mobile Home Park during typical wildfire evacuations by offering a viable route to the west, where currently the road is gated, the surface is gravel, and it is not considered reliable.

The Ocean Breeze Community’s primary evacuation routes are accessed through a series of internal neighborhood roadways, which connect with the primary ingress/egress roads (W. Lilac Road and Old Highway 395 (Dulin)) that intersect off-site primary and major evacuation routes. There are three ingress/egress routes for the Ocean Breeze Community.

Primary Ingress/Egress Routes:

- a. Western Primary Route: W. Lilac Road to Camino del Rey to SR-76 to the east or west.
- b. Eastern Primary Route: W. Lilac Road to Old Highway 395 to I-15 or SR-76.
- c. Eastern Secondary Route: Dulin Road to Old Highway 395 to SR-76 to the north or I-15 to the south.

Depending on the nature of the emergency requiring evacuation, it is anticipated that the majority of the Ocean Breeze traffic would exit the project via two unnamed southerly ingress/egress roads for PA-1 and PA-2) or one unnamed easterly ingress/egress road for PA-3. These are the direct routes out of the community and onto the public W. Lilac Road and other down-stream roadways for Ocean Breeze. In a typical evacuation that allows several hours or more time, traffic may be directed in several directions to the east or west to I-15 or the SR-76 and away from a northeast wind driven fire determined mostly by the fire’s location, its spread rate and direction, time available before it could threaten evacuation routes, traffic

levels, and others. If less time is available, or one or more potential routes are considered unsafe, fire and law enforcement officials may direct all traffic in one direction and may consider directing some neighborhoods to temporarily shelter in their homes.

Fire Access Road Maintenance

Maintenance is an important component for the long term reliability of all Project roadways, including Dulin Road. Maintenance obligations will be as follows:

Ocean Breeze HOA:

- Maintenance of access roads and brush
- Maintenance of all gates serving Ocean Breeze
- Financial reserve for repair of access road and gate
- Quarterly brush management
- Maintenance of signage directing evacuees from the Old Highway 395 to W. Lilac Road

Vessels Ranch:

- Maintenance of access roads and brush on Ranch Property
- Maintenance of all gates on Ranch property
- Financial reserve for repair of access roads and gates serving Ranch property
- Quarterly brush management of Ranch property

4.1 Roadway Capacities and Evacuation Time Estimates

Roadway capacity represents the calculated number of vehicles that can reasonably be accommodated on a road. Roadway capacity is typically measured in vehicles per hour and can fluctuate based on the number of available lanes, demand surges, number of traffic signals, construction activity, accidents, and obstructions as well as positively by traffic control measures. The estimated capacities for existing and planned roads are provided in Table 1. These response time estimates consider the incorporation of gates at Project entrance (W. Lilac) and within the Project on the newly extended Dulin Road emergency evacuation route.

Each roadway classification has a different capacity based on level of service, with freeways and highways having the highest capacities. Based on various similar project studies using traffic engineer estimates, and using industry standard lane capacity information with a conservative approach as the baseline, and a conservative discounting of capacity, roads that would be the most likely available to the Ocean Breeze residents and their hourly capacities are presented in Table 1.

Table 1. The Existing Ocean Breeze Community Roadway and Freeway Estimated Vehicle Capacities

Roadway	Segment	Estimated Roadway and Freeway Capacity*				
		East	West	North	South	Total
Interstate I-15	All Segments			10,000	10,000	20,000
State Route 76	I-15 to Oceanside	3200	3200			6,400
Old Highway 395	SR-76 (north) to I-15 (south)			1,200	1,200	2,400
W. Lilac Road	Old 395 to Camino del Rey	1,200	1,200			2,400

Table 1. The Existing Ocean Breeze Community Roadway and Freeway Estimated Vehicle Capacities

Roadway	Segment	Estimated Roadway and Freeway Capacity*				
		East	West	North	South	Total
Camino Del Rey	W. Lilac road to SR 76	1,200	1,200			2,400
Dulin Road ⁴	Vessels Ranch Road; Interim Emergency Road and Dulin Road East to Old Highway 395	1,200	1,200			2,400

Note: The vehicle capacity estimates utilized for this evacuation plan are based on available information and are discounted for various assumed traffic related slowing during a mass evacuation. This evacuation plan assumes that law enforcement personnel are controlling downstream intersections to maintain traffic flow out of the area. If traffic flow is not maintained, then the estimated evacuation times may increase, potentially substantially, as is the case in any urban area. While the immediate surge may create periodic and transient congestion, the volume in the vicinity of the Ocean Breeze Project is so low as to be well within good flow and operations. This is true even if all the traffic was destined for a single point of regional travel, like I-15 (LSA 2019).

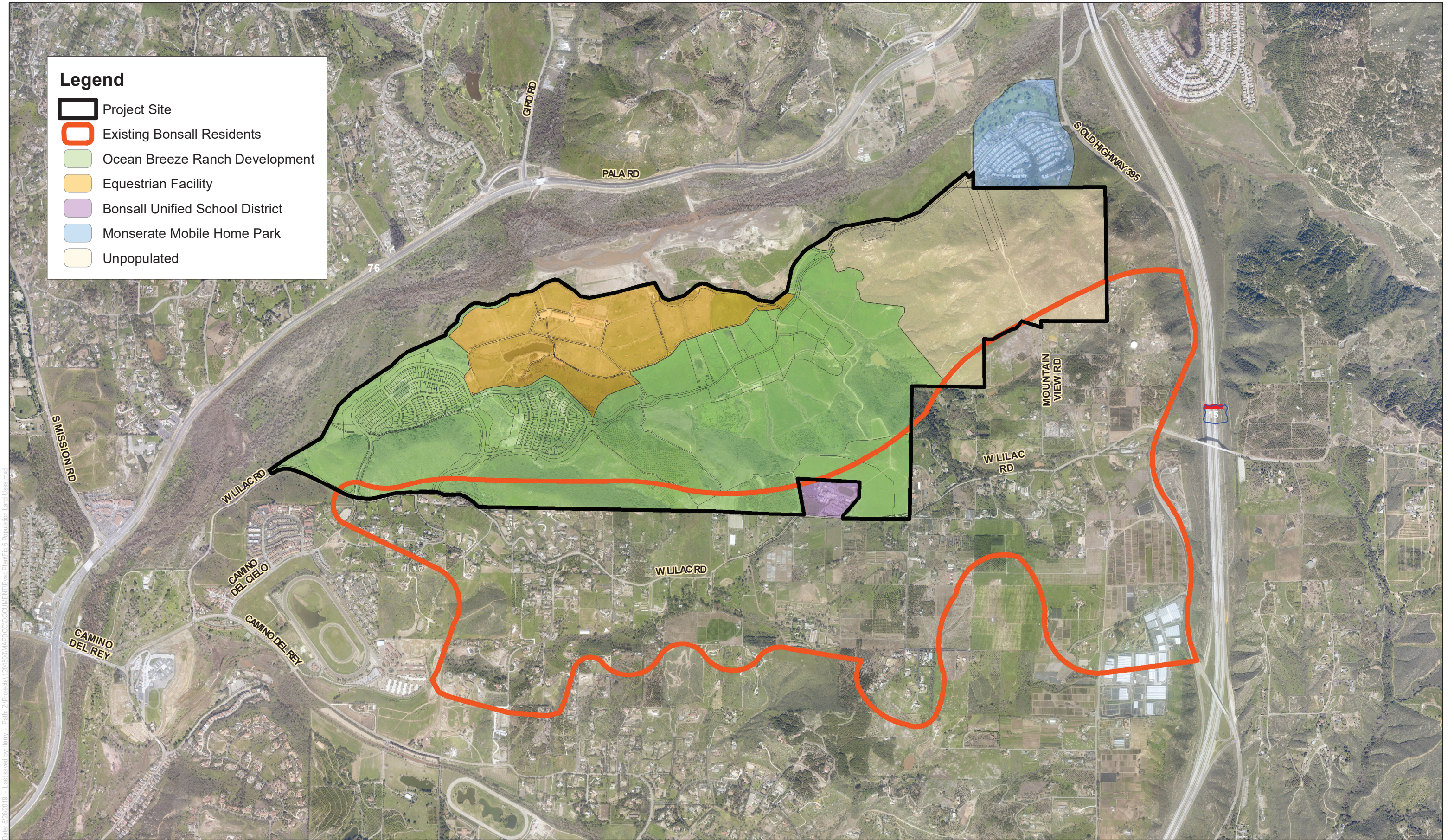
Using these averages, the length of time it will take for an area to evacuate can be estimated by dividing the population by the average vehicle occupancy and then dividing by the roadway capacity (Figure 4). Table 2 provides a summary of the calculated vicinity populations including existing residents, the school, the mobile home park, and the Project’s population. Ocean Breeze will include 396 single family residences, there are approximately 200 existing, vicinity Bonsall single family residences, and the Monserate Mobile Home Park includes 232 residences. Additionally, Sullivan Middle School/Bonsall High School is included in these calculations based on their stated policy. Figure 5 provides a vicinity land use map depicting the locations of each population included in the evacuation calculations.

Figure 4 Evacuation Time Calculation

$$\text{Evacuation Time} = \frac{\left(\frac{\text{Evacuation Population}}{\text{Average Vehicle Occupancy}} \right)}{\text{Roadway Capacity}}$$

The Ocean Breeze community is estimated to include 3.05 persons per dwelling unit, which equals approximately 1,208 persons, The Existing Bonsall residences are estimated to include the same 3.05 persons per dwelling unit, which totals 610 persons. The existing Monserate Mobile Home Park residences are conservatively calculated to include 2.0 persons per dwelling unit, although age-restricted communities usually include approximately 1.7 persons per unit on average. The total population estimate for the mobile home park is 464 persons. The combined population for the Ocean Breeze Community with the existing Project area Bonsall residents, and the Monserate Mobile Home Park residents 1,812 persons. During an evacuation, it is calculated that an average of 2 vehicles per household would evacuate, resulting in up to 1,656 vehicles potentially evacuating in a major incident that required full evacuation of the Ocean Breeze, Bonsall residents along W. Lilac Road and Monserate Mobile Home Park. Adding the potential 275 vehicles from the BUSD school site (percentage of parents who disregard instructions not to pick their students up), the total number of evacuating vehicles is estimated to be 1,931 vehicles.

The number of evacuating vehicles would likely be lower than estimated, as some families would likely drive in one vehicle versus in multiple vehicles, and depending on the time of day, many of these vehicles may already be off-site, such as if a fire occurred during typical work hours.



Legend

- Project Site
- Existing Bonsall Residents
- Ocean Breeze Ranch Development
- Equestrian Facility
- Bonsall Unified School District
- Monserate Mobile Home Park
- Unpopulated

SOURCE: AERIAL-SANGIS 2017; DEVELOPMENT PLAN-PDC 2019

FIGURE 6
 Various Populations Associated with Different Land Uses
 Conceptual Wildland Fire Evacuation Plan for the Ocean Breeze Community

INTENTIONALLY LEFT BLANK

Table 2. Population and Evacuating Vehicle Estimates for Ocean Breeze and Vicinity Land Uses

	Ocean Breeze Community ¹	Existing Bonsall Residences	Monserate Mobile Home Park	Sullivan Middle/ Bonsall High School	Combined
Dwelling Units (residences)	396	200	232	N/A	828
Persons per Unit	3.05	3.05	2	N/A	N/A
Calculated Population	1,208	610	464	850	3,132
Vehicles per Unit	2	2	2 ²	10 Busses and 30 staff vehicles	Varies
Worst Case Number of Vehicles Evacuating	792	400	464	275 parent vehicles ³	1,931

- ¹ Ocean Breeze Community includes all proposed single family dwellings.
- ² The population/unit assumption for senior communities is 1.7. However, the assumption that 2 vehicles/unit would evacuate is used consistent with this study's conservative approach.
- ³ Sullivan Middle /Bonsall High School Elementary Disaster Plan 2018-2019 indicates no students will be released on site and all will be moved to a designated off-site area for parent reunification.

Therefore, the potential amount of time needed to evacuate the Project area communities currently and with the Ocean Breeze Community, based on the existing and planned roadway improvements, was calculated based on the following factors: (1) the most limiting roadway capacity (1,200 vehicles per hour), (2) available evacuation routes on W. Lilac Road and its connector roads, and the newly installed and extended eastern portion of Dulin Road, that will serve as an emergency evacuation route to Old Highway 395 and subsequently SR-76 or Interstate 15. Depending on the scenario, it is estimated that evacuations would require all traffic to utilize W. Lilac Road and exit to the east or west. It is less likely that an evacuation would include travel via the emergency evacuation route using Dulin Road that would be available to future residents and/or the existing Monserate Mobile Home Park.

The percentage of the evacuation population utilizing each available route will depend on the scenario, and this analysis focuses on the most common scenario, which is similar to the Lilac Fire, initiating off the I-15 freeway and moving west/southwest driven by extreme winds. In this scenario, 100% of the Ocean Breeze traffic is directed onto W. Lilac Road and routed to the west toward Camino del Rey/SR-76 and connecting roads. Existing residents along W. Lilac Road may be directed east or west, depending on the wildfire location and behavior. This analysis utilizes 25% of the existing residents (easternmost residential properties) are directed to the east while the other 75% is directed to the west. The existing Monserate Mobil Home Park would be anticipated to primarily evacuate directly to Old Highway 395 to the south, with the potential for a small percentage (no more than 30%) of the population to utilize Dulin Road through the Ocean Breeze Project.

As previously described, BUSD middle and high school student and staff evacuation, according to the School Protection and Evacuation Plan – Wildfires (BUSD August 2019), are managed events that would follow one of three approaches. Wildfire related evacuations would either include 1) an early dismissal (for fires that are distant, but could threaten the school within several or more hours), 2) evacuation to a designated reunification location (for fires that are reasonably close and spreading toward the school, but still allowing time to organize and move schools off-site) or 3) shelter in place (for fires that make evacuation less safe than remaining on site within designated buildings). Therefore, this study concludes that wildfire evacuation related traffic would not include a surge of several hundred additional vehicles associated with the schools. However, based on past wildfire evacuations at the school, there is a percentage of parents who defy BUSD's Evacuation Plan protocols and go to the school to

pick up their children. This plan utilizes a conservative 50% of the estimated 550 parent vehicles, resulting in 275 vehicles. Based on the BUSD's emergency plan, it is presumed that BUSD is under contract with a bussing company to provide busses when needed during an emergency. If not, it is not uncommon for emergency management agencies to have the ability to mobilize busses to school locations for evacuation purposes.

The existing Monserate Mobile Home Park is currently limited regarding its evacuation options, with the only route being to the east to Old Highway 395, then north or south to I-15 or SR-76, respectively. An existing gravel road (that does not meet the code requirements for fire access roads) extends from the western boundary of the mobile home park into the Ocean Breeze property and connects to the Ranch's internal road system. The proposed condition provides a paved road meeting County Consolidated Fire Code and providing an easterly evacuation option for the Ocean Breeze community while providing a dual purpose of a westerly evacuation route for the Monserate Mobile Home Park residents.

As mentioned, this analysis caps the evacuation route traffic capacity at 1,200 vehicles per hour. This capacity is lower than each travel lane could support under ideal conditions, but is utilized as a method to reflect evacuation conditions, where there may be a traffic surge that slows vehicle speeds. Understanding the speed vehicles would travel to support 1,200 vehicles per hour provides additional supporting context. If the average vehicle is approximately 16 feet long, and allowing approximately 10 feet between vehicles (26 total feet per vehicle), an average travel speed of approximately 6 mph would enable 1,200 vehicles to pass a given point every hour. This is calculated by the following:

- 1,200 vehicles per hour = 20 vehicles per minute = 1 vehicle every 3 seconds
- 6 mph = 8.82 feet per second (1 mph = 1.47 feet per second)

Therefore, at 8.82 feet/second x 3 seconds = 26.5 feet. Each vehicle (16 feet + 10 feet = 26 feet) is allotted 3 seconds to pass a given point. In order for 1,200 vehicles to pass that given point, a speed of 6 mph is necessary. The average human walking speed is around 3 mph.

Therefore, the following travel time and evacuation estimates are not reliant on unrealistic vehicle speeds in order to achieve the use of 1,200 vehicles per hour capacity and are representative of congested roadways that can occur during evacuations, especially the initial phase where traffic surges are common. It is likely that more than 1,200 vehicles per hour would be possible with law enforcement traffic control. A commonly used capacity is 1,900 vehicles per lane, but this study evaluates the estimated travel time in a very conservative manner.

Based on the factors and assumptions previously detailed regarding neighborhood evacuation routes, and incorporating standard pre-evacuation timeframes and the evacuation route estimates detailed in Table 3, it is estimated that the existing condition would see all evacuating traffic from the existing residences evacuate via W. Lilac Road, with roughly 25 percent of traffic going easterly and 75 percent going westerly. Monserate Mobile Home Park residents would likely evacuate to the north or south on Old Highway 395. The BUSD school site would relocate students to a reunification site or shelter in place, with the exception of an estimated 50% of parent vehicles. With the Ocean Breeze Project, the same traffic conditions are expected, but the Project's traffic would also be added to the formula. One notable change would be the availability of a route to the west for the Monserate Mobile Home Park via the completed Dulin Road.

In some scenarios, it would be possible to evacuate portions or all of the Ocean Breeze Project to the east via Dulin Road, assuming the emergency allows evacuation in that direction and emergency managers direct

residents to evacuate via this route. This would allow a reduction on additional Ocean Breeze vehicles utilizing W. Lilac Road and reducing overall evacuation times.

Table 3. Evacuation Route Usage and Time Estimates

	Existing Condition (W. Lilac Road) ¹		With Ocean Breeze (emergency evacuation via W. Lilac Road)		With Ocean Breeze and enhanced easterly emergency evacuation point via Dulin Road ²	
	Percent of Vehicles	Total Vehicles ³	Percent of Vehicles	Total Vehicles ³	Percent of Vehicles	Total Vehicles ³
Emergency Evacuation Route to W. Lilac Road traveling east	25%	100 + 69 = 169	25%	100 + 69 = 169	25%	100 + 69 =169
Emergency Evacuation Route to W. Lilac Road traveling west	75%	300 +206 = 506	75% (existing)/100% Ocean Breeze	300 + 206 = 506 + 792 = 1,298	75% (existing)/100% Ocean Breeze	300 + 206 = 506 + 792 = 1,298
Dulin Road to W. Lilac Road traveling West	Not Available	0	0%	0	30%	139
Total	100%	400 +275 = 675	100%	400 + 275 + 792 = 1,467	100%	400 + 275 + 792 + 139 = 1,606

- ¹ Monserate Mobile Home Park is not included in this existing condition scenario as they would not rely on W. Lilac road for evacuation. Residents would utilize Old Highway 395 north or south to SR-76 or I-15, respectively.
- ² Scenario considers that Dulin Road provides evacuation route for up to 30% of the Monserate Mobile Home Park evacuees to W. Lilac Road (it would not be likely that more than 30% would utilize this route as most would access Old Highway 395 due to its proximity and drive north or south out of the area.
- ³ In all cases, transport of BUSD school students and staff occurs via busses with up to 275 parent vehicles arriving to pick up children.

4.1.1 Evacuation Time Discussion

Based on the preceding assumptions and the travel time formula, the time estimates for the existing condition and the Ocean Breeze scenario are summarized in Table 4. Table 5 summarizes the Expanded Population scenario which includes other residential land use populations for existing W. Lilac Road adjacent residences, Monserate Mobile Home Park, and the managed Sullivan Middle/ Bonsall High School.

Table 4. The Ocean Breeze Evacuation Travel Timeframes*

Scenario**	W. Lilac East	W. Lilac West	Dulin Road	Total Vehicles	Minimum Road Capacity (vehicles per hour)	Estimated Evacuation Travel Timeframe***
Existing Condition	169	506	0	675	1,200	25 minutes
Existing Condition + Ocean Breeze	169	1,298	0	1,467	1,200	65 minutes

Table 4. The Ocean Breeze Evacuation Travel Timeframes*

Scenario**	W. Lilac East	W. Lilac West	Dulin Road	Total Vehicles	Minimum Road Capacity (vehicles per hour)	Estimated Evacuation Travel Timeframe***
Existing Condition + Ocean Breeze + Dulin Road (30% of Monserate Mobile Park vehicles travel through Ocean Breeze to W. Lilac Road and all travel westerly)****	169	1,298	127 (west bound)	1,594	1,200	71 minutes

- * Includes “wheels rolling” where all persons have left their home. Does not include notification, mobilization and travel out of the area
- ** Scenario 1 (Existing Condition) includes 25% of existing residential and school parent traffic travel east bound to Old Highway 395. Monserate Mobile Home Park travels directly to Old Highway 395. Remainder of Sullivan Middle/Bonsall High School travel west on W. Lilac Road. Scenarios 2 and 3 include all of these plus the Ocean Breeze’ vehicles all traveling west on W. Lilac Road.
- *** Estimated evacuation travel timeframe is calculated by dividing the maximum number of vehicles using each evacuation route by the route’s lowest vehicle capacity. The longest evacuation route timeframe is used to represent the overall travel time.
- **** 70 % of Monserate Mobile Home Park is assumed to leave to the east via Old Highway 395 and not traveling on W. Lilac Road

This evacuation scenario results in a worst-case calculated 71 minutes travel time to fully evacuate all studied populations to West Lilac Road and this scenario assumes that 30% of the existing Monserate Mobile Home Park residents travel to the west, through Ocean Breeze to W. Lilac Road, and then all travel westerly on W. Lilac Road from that point. When the Monserate Mobile Home Park is removed from the scenario, assumed to have evacuated directly to Old Highway 395, then the existing condition (existing residents adjacent to W. Lilac Road + parents who would arrive at BUSD site) is calculated to evacuate within roughly 25 minutes. This assumes that law enforcement is assisting BUSD with relocation of the students via contract busses. With the Ocean Breeze Project, there is an increase in the calculated evacuation travel time of up to 40 minutes.

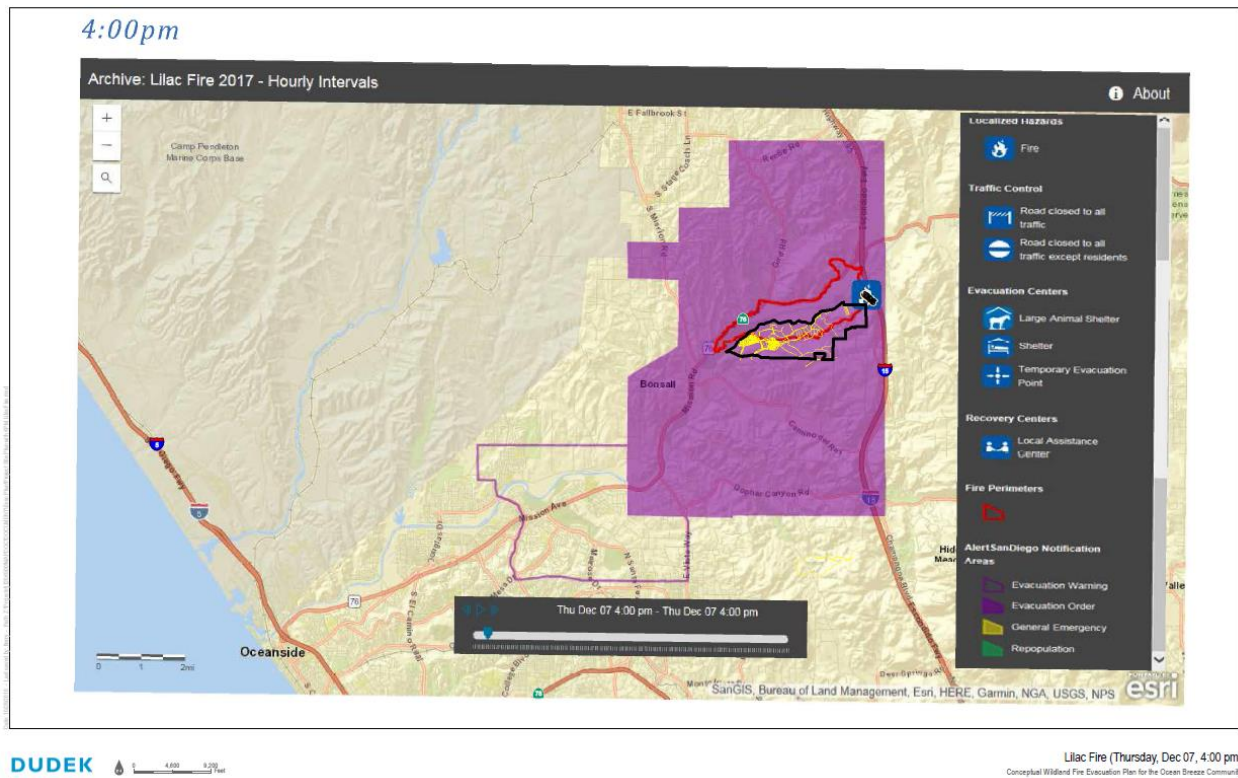
The increased number of vehicles associated with the Ocean Breeze Community that would be evacuating the area and relying on West Lilac Road increases the overall evacuation travel time by up to 40 minutes. However, the addition of 40 minutes still results in an evacuation that is considered reasonable, particularly when compared to evacuation estimates provided by Rohde & Associates (2019) of up to 90 minutes (including reflex time, which is approximately 30 minutes) and when considered in comparison with the Lilac Fire spread. According to the official After Action Report, the main fire front perimeter had burned over portions of the easterly Project site, but had not burned beyond the Project’s northerly boundaries for Phases 1 and 2 by 4 pm, in excess of 4 hours after it started (Figure 6), but then did burn toward and over West Lilac Road before 5 pm). The Project would have had significantly more time to evacuate than needed and the Lilac Fire can be considered to represent a worst-case, extreme fire scenario (1 hour, 11 minutes vs. 4+ hours).

This travel time calculation is very conservative in both the number of vehicles evacuating and the number of vehicles per hour that can be accommodated. The Ocean Breeze Project plans to provide one additional gated and signed ingress/egress route to the area via Dulin Road to make it a reliable route that can provide fire department ingress and/or resident egress should it be determined necessary by NCFPD or SDCSD.

4.2 Evacuation Route Determination

Typically, fire and law enforcement officials will identify evacuation points before evacuation routes are announced to the public. Evacuation routes are determined based on the location and extent of the incident and include as many pre-designated transportation routes as possible. However, field conditions and shifting fire behavior may result in real-time changes to predetermined routes. Having additional evacuation route options is considered critical in these conditions.

Figure 6. Lilac Fire



After Action Report indicates fire perimeter had burned over the eastern portions of the Project Site by 4 pm, and the western portions of the Project were being encroached upon. West Lilac Road had not been compromised, enabling four or more hours for evacuation after the 11:15 am fire start.

INTENTIONALLY LEFT BLANK

5 Ocean Breeze Resident Fire/ Evacuation Awareness

The Ocean Breeze Community HOA will be active in its outreach to residents regarding fire safety and general evacuation procedures. There are aspects of fire safety and evacuation that require a significant level of awareness by the residents and emergency services in order to reduce and/or avoid problems with an effective evacuation. Mitigating potential impediments to successful evacuations requires focused and repeated information through a strong educational outreach program. The Ocean Breeze HOA will engage residents and NCFPD through a variety of methods.

This emergency evacuation plan will be provided to each homeowner/HOA member as well as being accessible on the HOA Website. Annual reminder notices will be provided to each homeowner encouraging them to review the plan and be familiar with community evacuation protocols. The HOA will coordinate with NCFPD to hold an annual fire safety and evacuation preparedness informational meeting. Representatives of NCFPD will be invited to attend and important fire and evacuation information will be reviewed. One focus of these meetings and the HOA's annual message will be on the importance of each resident to prepare and be familiar with their own "Ready, Set, Go!" evacuation plan. The "Ready, Set, Go!" program is defined at: <https://www.sandiego.gov/sites/default/files/rsg-english.pdf> and information about preparing an individual Action Plan is provided in Appendix A.

The focus of the "Ready, Set, Go!" program is on public awareness and preparedness, especially for those living in the wildland-urban interface (WUI) areas. The program is designed to incorporate the local fire protection agency as part of the training and education process in order to insure that evacuation preparedness information is disseminated to those subject to the potential impact from a wildfire. There are three components to the program:

- **"READY" – Preparing for the Fire Threat:** Take personal responsibility and prepare long before the threat of a wildfire so you and your home are ready when a wildfire occurs. Create defensible space by clearing brush away from your home as detailed in the Ocean Breeze FPP (Dudek 2018). Use only fire-resistant landscaping and maintain the ignition resistance of your home. Assemble emergency supplies and belongings in a safe spot. Confirm you are registered for Reverse 9-1-1 and AlertSanDiego alert system. Make sure all residents residing within the home understand the plan, procedures and escape routes.
- **"SET" – Situational Awareness When a Fire Starts:** If a wildfire occurs and there is potential for it to threaten the Ocean Breeze community, pack your vehicle with your emergency items. Stay aware of the latest news from local media, County of San Diego (<http://www.sdcountyemergency.com/updates/>) and NCFPD for updated information on the fire. If you are uncomfortable, leave the area.
- **"GO!" – Leave Early!** Following your Action Plan provides you with knowledge of the situation and how you will approach evacuation. Leaving early, well before a wildfire is threatening your community, provides you with the least delay and results in a situation where, if a majority of neighbors also leave early, firefighters are now able to better maneuver, protect and defend structures, evacuate other residents who couldn't leave early, and focus on citizen safety.

"READY! SET! GO!" is predicated on the fact that being unprepared and attempting to flee an impending fire late (such as when the fire is physically close to your community) is dangerous and exacerbates an already confusing situation. This Ocean Breeze CWFEP provides key information that can be integrated into the individual Action Plans, including the best available routes for them to use in the event of an emergency evacuation.

Situation awareness requires a reliable information source. One of the most effective public notification methods is Reverse 9-1-1. The San Diego OES operates the reverse 9-1-1 notification system that provides a recorded message over landline telephone systems relating to evacuation notices. In addition, the (OES) operates a program known as “AlertSanDiego” that has the capability to send emergency notifications over both landlines as well as to cell phones and via text messages. It is up to individual residents to register their cell phones for “AlertSanDiego”. The registration of cell phones can be done on line at www.ReadySanDiego.com. The Ocean Breeze HOA will strongly encourage all residents to register telephone numbers.

As part of the Ocean Breeze resident fire awareness and evacuation readiness program, information will be delivered in a variety of methods. The HOA will be responsible to provide and distribute to each homeowner a complete copy of the project’s Fire Protection Plan and this CWFEP, including materials from the READY! SET! GO! Program. The HOA is also responsible for insuring the distribution of copies of the aforementioned materials to those individuals that purchase properties for re-sales and to the management of non-residential properties. Management of the commercial properties will be responsible for the dissemination of the Evacuation Plan information to their employees.

As part of the approval of this project, it shall be binding on the HOA to actively participate as a partner with the NCFPD to assist with the coordination and distribution of fire safety information they develop.

6 Ocean Breeze Evacuation Procedures

6.1 Relocation/Evacuation

Wolshon and Marchive (2007) simulated traffic flow conditions in the wildland urban interface (WUI) under a range of evacuation notice lead times and housing densities. To safely evacuate more people, they recommended that emergency managers (1) provide more lead-time to evacuees and (2) control traffic levels during evacuations so that fewer vehicles are trying to exit at the same time. In some emergencies, more lead-time will be possible while in others, it will not. Traffic controls may be possible with longer lead times, but may be limited to controlling some intersections during short notice events.

Wildfire emergency response procedures will vary depending on the type of wildfire and the available time in which decision makers (IC, NCFPD, SDCSD, and/or County Office of Emergency Management) can assess the situation and determine the best course of action. Based on the community, its road network, and the related fire environment, the primary type of evacuation envisioned is an orderly, pre-planned evacuation process where people are evacuated from the Ocean Breeze community to urban areas further from an encroaching wildfire (likely to urban areas northeast, east, southeast, south and west) well before fire threatens. This type of evacuation must include a conservative approach to evacuating, i.e., when ignitions occur and weather is such that fires may spread rapidly, evacuations should be triggered on a conservative threshold. This threshold must include time allowances for unforeseen, but possible, events that could slow the evacuation process.

Evacuation is considered by many to offer the highest level of life protection to the public, but it can result in evacuees being placed in harm's way if the time available for evacuation is insufficient (Cova et al. 2011). An example of this type of evacuation, which is highly undesirable from a public safety perspective, is an evacuation that occurs when fire ignites close to vulnerable communities. This type of situation is inherently dangerous because there is generally a higher threat to persons who are in a vehicle on a road when fire is burning in the immediate area. Conditions may become so poor, that the vehicle drives off the road or crashes into another vehicle, and flames and heat overcome the occupants. This scenario occurred in San Diego County during the 2003 Cedar Fire and in the 2017 northern California wildfires. This type of evacuation must be considered a very undesirable situation by law and fire officials in all but the rarest situations where late evacuation may be safer than seeking temporary refuge in a structure (such as when there are no nearby structures, the structure(s) is/are already on fire, or when there is no other form of refuge).

The third potential type of evacuation is a hybrid of the first two. In cases where evacuation is in process and changing conditions result in a situation that is considered unsafe to continue evacuation, it may be advisable to direct evacuees to pre-planned temporary refuge locations, including their own home if it is ignition resistant and defensible, such as those at Ocean Breeze. As with the second type of evacuation discussed above, this situation is considered highly undesirable, but the evacuation pre-planning must consider these potential scenarios and prepare decision makers at the IC level and at the field level for enacting a contingency to evacuation when conditions dictate.

Indications from past fires and related evacuations in San Diego County and throughout Southern California, which have experienced large wildfires, are that evacuations are largely successful, even with a generally unprepared populace. It then stands to reason that an informed and prepared populace would minimize the potential evacuation issues and related risk to levels considered acceptable from a community perspective.

Evacuation orders or notifications are often triggered based on established and pre-determined buffers. These buffers are often hard or soft lines on a map and are based on topography, fuel, moisture content of the fuels, and wind direction. Evacuations are initiated when a wildfire reaches or crosses one of these pre-determined buffers. Evacuations can also be very fluid. The IC, law enforcement, and County OES would jointly enact evacuations based on fire behavior.

6.2 Ocean Breeze Community Evacuation Baseline

For purposes of this CWFEP, the first and most logical choice for all of the residents and guests within the boundaries of the Ocean Breeze community is to adhere to the principals and practices of the “READY! SET! GO!” Program previously mentioned in this document. As part of this program, it is imperative that each household develop a plan that is clearly understood by all family members and participates in the educational and training programs sponsored by the Ocean Breeze HOA and the NCFPD. In addition, it is imperative that the “READY! SET! GO!” information be reviewed on a routine basis along with the accompanying maps illustrating evacuation routes, temporary evacuation points and pre-identified safety zones. It must be kept in mind that conditions may arise that will dictate a different evacuation route than the roads used on a daily basis.

Residents are urged to follow the directions of emergency notices and personnel and to evacuate as soon as they are notified to do so or earlier, if they feel uncomfortable. Directions on evacuation routes will be provided in most cases, but when not provided, Ocean Breeze residents will proceed according to known available routes away from the encroaching fire as detailed in Section 1 of this plan. Residents are cautioned not to rely on navigation apps which may inadvertently lead them toward an oncoming fire.

Note: This evacuation plan should be updated periodically (suggested every 5 years) to review changing conditions in the area and to refine evacuation options, routes, and contingencies as the landscape and road system develops over time.

6.3 Civilian and Firefighter Evacuation Contingency

As of this document’s preparation, no community in California has been directed to shelter in place during a wildland fire. Even the communities in Rancho Santa Fe, California which are designed and touted as shelter-in-place communities, were evacuated during the 2007 Witch Creek Fire. This is not to say that people have not successfully sheltered in place during wildfire; there are numerous examples of people sheltering in their homes, in hardened structures, in community buildings, in swimming pools, and in cleared or ignition resistant landscape open air areas. The preference for Ocean Breeze will always be early evacuation following the “Ready, Set, Go!” model, but there exists the potential for unforeseen civilian evacuation issues, and having a contingency plan will provide direction in these situations that may result in saved lives.

Potential problems during wildfire evacuation from Ocean Breeze include:

- Fires that prevent safe passage along planned evacuation routes (particularly for W. Lilac Road and Dulin Road and portions of SR-76)
- Inadequate time to safely evacuate
- Fire evacuations during peak traffic conditions or when large events are occurring
- Blocked traffic due to accidents or fallen tree(s) or power pole(s)
- The need to move individuals who are unable to evacuate

It is recommended that SDCSD and NCFPD conduct concerted pre-planning efforts focusing on evacuation contingency planning for civilian populations when it is considered safer to temporarily seek a safer refuge than evacuation.

6.3.1 Safety Zones

The International Fire Service Training Association (IFTSA; Fundamentals of Wildland Fire Fighting, 3rd Edition) defines Safety Zones as areas mostly devoid of fuel, and which are large enough to assure that flames and/or dangerous levels of radiant heat will not reach the personnel occupying them. Areas of bare ground, burned over areas, paved areas, and bodies of water can all be used as safety zones. The size of the area needed for a safety zone is determined by fuel types, its location on slopes and its relation to topographic features (chutes and saddles) as well as observed fire behavior. Safety zones should never be located in topographic saddles, chutes or gullies. High winds, steep slopes or heavy fuel loads may increase the area needed for a Safety Zone.

The National Wildland Fire Coordinating Groups (NWFCG), Glossary of Wildland Fire Terminology provides the following definitions for Safety Zone and Escape routes:

Safety Zone. An area cleared of flammable materials used for escape in the event the line is outflanked or in case a spot fire causes fuels outside the control line to render the line unsafe. In firing operations, crews progress so as to maintain a safety zone close at hand allowing the fuels inside the control line to be consumed before going ahead. Safety zones may also be constructed as integral parts of fuelbreaks; they are greatly enlarged areas which can be used with relative safety by firefighters and their equipment in the event of blowup in the vicinity.

According to NWFCG, Safety Zone(s):

- Must be survivable without a fire shelter
- Can include moving back into a clean burn
- May take advantage of natural features (rock areas, water, meadows)
- Can include Constructed sites (clear-cuts, roads, helispots)
- Are scouted for size and hazards
- Consider the topographic location (larger if upslope)
- Should be larger if downwind
- Should not include heavy fuels
- May need to be adjusted based on site specific fire behavior

The definition for a safety zone includes provisions for separation distance between the firefighter and the flames of at least four times the maximum continuous flame height. Distance separation is the radius from the center of the safety zone to the nearest fuels. For example, considering worst case 60-foot-tall flame lengths in treated fuels that may be possible adjacent this site (Firewise, 2019) , then a 100-foot separation would be required, and potentially more if there were site-specific features that would result in more aggressive fire behavior. This setback would be achieved on all interior streets within the Ocean Breeze developed areas.

If one considers the ignition resistant and maintained landscaping within each of the Ocean Breeze neighborhoods, along with the adjacent 100 feet wide fuel modification zones, nearby agricultural/equestrian areas, and Chapter 7A of California Building Code compliant structures. The Ocean Breeze interior roads and neighborhoods would provide Safety Zones available to responding firefighters. The Ocean Breeze neighborhoods as Safety Zones can be part of NCFPD's and County's pre-planning efforts, although during a fire, the identified safety zones may not be feasible due to distance, location, fire behavior, etc.

Identification of potential safety zones will require additional focused study by NCFPD and other fire and law enforcement agencies.

6.3.2 Temporary Firefighter Refuge Areas

Firescope California (Firefighting Resources of Southern California Organized for Potential Emergencies) was formed by legislative action to form a partnership between all facets of local, rural, and metropolitan fire departments, California Department of Forestry and Fire Protection (CAL FIRE), and federal fire agencies. Firescope defines a contingency plan when it is not possible to retreat to a safety zone. This contingency includes establishment of firefighter Temporary Refuge Areas (TRA), which are defined as:

A preplanned area where firefighters can immediately take refuge for temporary shelter and short-term relief without using a fire shelter (fire resistant tent) in the event that emergency egress to an established Safety Zone is compromised.

Examples of a TRA may include the lee side of a structure, inside of a structure, large lawn or parking areas, or cab of fire engine, amongst others. Differences between a TRA and a Safety Zone is that TRA's are closer to the immediate firefighting area, are considered a contingency to being able to get to a Safety Zone, do not include a requirement for a large area set back four times the flame lengths of adjacent fuels, and cannot be feasibly pre-planned until firefighters arrive on scene and size up the situation.

Firescope appropriately notes that although Safety Zones and viable Escape Routes shall always be identified in the WUI environment, they may not be immediately available should the fire behavior increase unexpectedly. Often a TRA is more accessible in the WUI environment. A TRA will provide temporary shelter and short-term relief from an approaching fire without the use of a fire shelter and allow the responders to develop an alternate plan to safely survive the increase in fire behavior.

TRAs are pre-planned areas (planned shortly after firefighters arrive on scene) where firefighters may take refuge and temporary shelter for short-term thermal relief, without using a fire shelter in the event that escape routes to an established safety zone are compromised. The major difference between a TRA and a safety zone is that a TRA requires another planned tactical action, i.e., TRAs cannot be considered the final action, but must include self-defense and a move out of the area when the fire threat subsides. A TRA should be available and identified on site at a defended structure. TRAs are NOT a substitute for a Safety Zone. TRA pre-planning is difficult, at best because they are very site and fire behavior specific. For the Ocean Breeze community, TRAs would likely include navigating into any of the neighborhoods where up to 100-foot-wide fuel modification zones provide defensible space and maintained landscapes are provided, along with ignition resistant residences and wide roads that offer numerous opportunities for TRA. The nearby equestrian areas may be considered for firefighter and civilian temporary refuge if emergency managers determine that is the best available alternative.

The developed portions of the Ocean Breeze neighborhoods, but especially the interior areas of neighborhoods, and the equestrian fields are considered TRAs. This is an important concept because it offers last-resort, temporary refuge of firefighters, and in a worst-case condition, residents. This approach would be consistent with Firescope California (2013) which indicates that firefighters must determine if a safe evacuation is appropriate and if not, to identify safe refuge for those who cannot be evacuated, including civilians.

Each of the site's residences that can be considered for TRA include the following features:

- Ignition Resistant Construction
- Up to 100-foot wide Fuel Modification Zone around perimeter of project
- Wide roadways with fire hydrants
- Maintained landscapes and roadside fuel modification
- Ember resistant vents
- Interior fire sprinklers

Because there is the possibility that evacuation of the project may be less safe than temporarily refuging on site; such as during a fast-moving, wind or slope driven fire that ignites off of W. Lilac Road, Dulin Road or State Route 76 or in the foothills west and southwest of the site; including temporary refuge within residences or elsewhere on site is considered a contingency plan for Ocean Breeze. This concept is considered a component of the "Ready, Set, Go!" model as it provides a broader level of "readiness" should the ability to execute an early evacuation be negated by fire, road congestion, or other unforeseen issues. This approach would be considered a last-resort contingency during wildfire with the primary focus being on early evacuation. The decision for evacuation or temporarily refuging on site will be made by responding law enforcement and/or fire personnel.

6.4 Social Aspects of Wildfire Evacuation

Orderly movement of people is the result of planning, training, education, and awareness, all of which are promoted in San Diego County and by NCFPD. Evacuation has been the standard term used for emergency movement of people and implies imminent or threatening danger. The term in this CWFEP, and under the "Ready, Set, Go!" concept, indicates that there is a perceived threat to persons and movement out of the area is necessary, but will occur according to a pre-planned and practiced protocol, reducing the potential for panic.

Citizen reactions may vary during an evacuation event, although several studies indicate that orderly movement during wildfire and other emergencies is not typically unmanageable. Evacuation can be made even less problematic through diligent public education and emergency personnel training and familiarity. Social science research literature indicates that reactions to warnings follow certain behavior patterns that are defined by people's perceptions (Aguirre 1994, Drabek 1991, Fitzpatrick and Mileti 1994, Gordon 2006, Collins 2004) and are not unpredictable. In summary, warnings received from credible sources by people who are aware (or have been made aware) of the potential risk, have the effect of an orderly decision process that typically results in successful evacuation. This success is heightened when evacuations are not foreign to residents (Quarantelli and Dynes 1977; Lindell and Perry 2004) as will occur within the Ocean Breeze project. Further, in all but the rarest circumstances, evacuees will be receiving information from credible sources during an evacuation. Further, it would be anticipated that law enforcement and/or fire personnel would be on site to help direct traffic and would be viewed by evacuees as knowledgeable and credible. The importance of training these personnel cannot be understated and annual education and training regarding fire safety and evacuation events will be essential for successful future evacuations.

6.4.1 Evacuation of Special Populations

Vogt (1990 and 1991) defines special populations as those groups of people who, because of their special situations or needs, require different planning strategies from those of the general population. Special needs populations include those in institutions or special facilities, those with disabilities in homes, those who need care,

children, and others who cannot provide for their own evacuation if necessitated. The special needs population is concentrated in facilities, but is also widespread in terms of facility locations and those who live in residences. Special needs populations in Ocean Breeze include the hearing or visually impaired, foreign speaking, visitors passing through the area, temporary visitors such as day workers, and the non-ambulatory confined to residences either temporarily or permanently.

Tourists and temporary visitors may not have knowledge of the area's fire hazard, they may not know how to react in a fire emergency, and they may not understand what they are being told to do. Conversely, this segment of the population would typically be easier to evacuate quickly as they have no possession or pets that they would need to prepare. They can get in their cars and be directed out of the area.

The reasons why special needs populations may fail to respond to warnings to take protective actions is that they may require special transportation while others require different types of warnings or technologies to receive a warning. Some groups must rely on caregivers to hear the warning and respond.

Ocean Breeze Community Approach:

The Ocean Breeze community will provide information to residents regarding notifying NCFPD, County OES and Health and Human Services of special needs residents so that accommodations for their notification (Accessible AlertSanDiego, CERT programs, or other), transportation or other special requirements can be provided during an emergency evacuation. Visitors and guests to the Ocean Breeze community will be advised of their options during an emergency by law enforcement or fire officials, residents whom they are visiting, commercial vendor staff, or HOA representatives, as appropriate.

6.4.2 Animal Evacuations

Animal evacuations present a host of challenges that may affect the overall successful movement of people and their possessions out of harm's way. For example, livestock owners do not always have the means to load and trailer their livestock out of the area. Further, most wildfire evacuation relief shelters or commercial lodging facilities do not allow people to bring in pets or other animals. Sorensen and Vogt (2006) indicate that an issue receiving increasing attention is what evacuees do with pets or other animals such as livestock when they leave their homes and whether having pets or animals impacts their decision to evacuate.

The Ocean Breeze project does not include horse facilities within the residential areas, but is associated with the large equestrian facility to its north. Household pets will be a common occurrence.

Ocean Breeze's horse facility will include up to 400 or more horses at peak times. The entire equestrian facility is fenced and encompasses approximately 203 acres which offer several large irrigated pastures, three large barns with indoor stables, fenced outdoor stables, hay storage, veterinary buildings, housing for ranch personnel, maintenance buildings and offices. The facility offers the ability to safely shelter the horses as was done during the 2017 Lilac Fire. Horses are moved to large pastures and irrigation is turned on. Equestrian staff or Ranch personnel continuously monitor the location, safety and welfare of the horses when threat of fire exists in the immediate area of the equestrian facility or ranch area. Should equestrian staff or ranch personnel need to prepare to shelter or relocate horses, or be directed to evacuate for safety reasons, there are existing "protected" interior access roads surrounded by irrigated turf and bare ground that offer these personnel the ability to drive to and from pastures, existing buildings or evacuate the equestrian grounds and leave the area. Two (2) separate access roads will allow personnel to evacuate from the equestrian facility. These roads include a private entry/exit road

connected to Road A' in Planning Area 2 which connects to W. Lilac Road, and an existing internal access road that will connect to Dulin Road, which exits thru the Monserate Mobile Home Park, connecting to Highway 395. Evacuation Signage would be provided along Dulin road at the Monserate Mobile Home Park gate directing evacuees from Old Highway 395 to W. Lilac Road.

NOTE: There is the opportunity to shelter firefighters and apparatus within some of the site's large enclosed barns and buildings if it is determined to be necessary during a large wildfire.

The Ocean Breeze Community Approach

Develop a strong outreach program for pet owners so they understand their responsibilities and that they will not likely be allowed re-entry once evacuated.

Develop a registration for owners of animals who cannot evacuate them without assistance so that volunteer organizations or individuals can provide resources.

- Equestrian facility would practice on-site sheltering of horses and would not attempt to move them from the site.

6.4.3 Re-Entry Procedures

An important component of evacuations is the citizen re-entry process. Guidance and procedures to ensure a coordinated, safe, and orderly re-entry into impacted communities following an incident is provided in the County of San Diego Re-Entry Protocol.

Re-entry will be initiated by the Incident Commander/Unified Command of the Incident Management Team, with the support of the Director of Emergency Services, the OA EOC Director, and the Operations Section Chief at the OA EOC. In most cases, the OA EOC will remain activated until full re-entry is complete. In the event that the OA EOC has been deactivated, the Incident Commander or the Liaison Officer of the Incident Management Team will initiate re-entry procedures.

The Incident Commander will designate a Re-Entry Coordinator and the Operations Section Chief of the OA EOC will coordinate with and support the re-entry coordinator. The Re-Entry Coordinator is responsible for coordinating the re-entry procedures with all involved agencies and ensuring effective communication. Priorities for re-entry include:

The impacted areas must be thoroughly investigated to ensure it is safe for residents to return and normal operations have been restored. This assessment will include verification that:

The public will be notified of the re-entry status through the notification measures previously mentioned in this annex, including www.SDCountyEmergency.com, SDEmergency App for smart phones, emergency broadcast radio, television, press releases, informational phone-lines such as 2-1-1, community briefings, and informational updates at shelters.

Once evacuees are permitted to return, it is important that procedures are established to properly identify residents and critical support personnel, as well as ensure the legitimacy of contractors, insurance adjustors, and other personnel. Re-entry points should be staffed by law enforcement personnel.

INTENTIONALLY LEFT BLANK

7 Limitations

This CWFEP has been developed based on wildfire and evacuation standards and the San Diego County Evacuation Annex Q (San Diego County 2014) and is specifically intended as a guide for evacuations for the Ocean Breeze Community. This plan provides basic evacuation information that will familiarize Ocean Breeze residents with the evacuation route options that may be available to them during an emergency. However, because emergencies requiring evacuation have many variables and must be evaluated on a case-by-case basis, this plan shall be subservient to real-time law enforcement and fire personnel/agencies' decision-making and direction during an emergency requiring evacuation.

This CWFEP promotes the “Ready, Set, Go!” model, adopted by NCFPD, San Diego County Fire Authority, CAL FIRE, and many fire agencies statewide. The goal is to raise agency and citizen awareness of potential evacuation issues and get a majority of the public “Ready” by taking a proactive stance on preparedness, training drills, and visitor education, and evacuation planning efforts. The Ocean Breeze populace will be “Set” by closely monitoring the situation whenever fire weather occurs and/or when wildland fire occurs, and elevating pre-planned protocol activities and situation awareness. Lastly, officials will implement the plan and mandate that populations “Go” by executing pre-planned evacuation procedures, considering proposed evacuation trigger thresholds, in a conservative manner, i.e., evacuation will occur based on conservative decision points, as proposed in this evacuation plan or when directed by fire and law enforcement personnel, whichever is more conservative. The preferred alternative will always be early evacuation. However, there may be instances when evacuation is not possible, is not considered safe, or is not an option based on changing conditions. For example, should a fire occur with short notice and make evacuation from the project ill advised, a contingency plan for residents is available. This contingency would include moving people to pre-designated temporary refuge areas, including possibly within Ocean Breeze residences and other structures or if directed by fire or law enforcement personnel, the Equestrian Facility, until it is safe to evacuate or the threat has been mitigated.

Ultimately, it is the intent of this Plan to guide the implementation of evacuation procedure recommendations such that the process of evacuating people from the Ocean Breeze project is facilitated in an efficient manner and according to a pre-defined evacuation protocol; as well as providing a contingency option of temporarily refuging, if evacuation is considered less safe.

The Ocean Breeze residents will be aware of and familiar with this evacuation plan as the HOA will post it on its Website and provide reminders to residents on at least an annual basis. This educational outreach will result in a populace that understands the potential for evacuations and the routes and options that may be presented to them.

During extreme fire weather conditions, there are no guarantees that a given structure will not burn or that evacuations will be successful all of the time. Wildfires may occur in the area that could damage property or harm persons. However, successful implementation of the recommendations outlined in this Evacuation Plan will provide for an informed populace regarding evacuations. The Ocean Breeze community is designed specifically to be resistant to wildfire ignition and perform as a fire adapted project, offering fire and law officials with additional options for resident safety compared to those options available to less defensible communities.

This CWFEP does not provide a guarantee that all persons will be safe at all times because of the recommendations proposed. There are many variables that may influence overall safety. This Plan provides a summary for implementation of standard evacuation protocols, suggested roadway enhancements, and public outreach, which should result in reduced wildfire related risk and hazard. Even then, fire can compromise the procedures through

various, unpredictable ways. The goal is to reduce the likelihood that the system is compromised through implementation of the elements of this Plan and regular occurring program maintenance and updates.

It is recommended that the evacuation process is carried out with a conservative approach to fire safety. This approach must include maintaining the Ocean Breeze fuel modification landscape, infrastructural, and ignition resistant construction components according to the appropriate standards and embracing a “Ready, Set, Go!” stance on evacuation. Accordingly, evacuation of the wildfire areas should occur according to pre-established evacuation decision points, or as soon as they receive notice to evacuate, which may vary depending on many environmental and other factors. Fire is a dynamic and somewhat unpredictable occurrence, and it is important for anyone living at the wildland-urban interface to educate themselves on practices that will improve safety.

8 References

- Aguirre, D.B. 1994. *Planning warning evacuation, and search and rescue: A review of the social science research literature*. College Station, TX. Texas A&M University, Hazard Reduction Recovery Center.
- Collins, S. L. 2004. *Evaluation of Evacuation Planning in Wildland-Urban Interface Environments: Executive Analysis of Fire Service Operations in Emergency Management*. Applied Research project submitted to the National Fire Academy as part of the Executive Fire Officer Program. 44 pp.
- Cova, T.J., P.E. Dennison, and F.A. Drews. 2011. "Modeling evacuate versus shelter-in-place decisions in wildfires." *Sustainability*, 3(10): 1662-1687. Published, 09/30/2011. <http://www.mdpi.com/2071-1050/3/10/1662/>.
- Drabek, T.E. 1991. "Anticipating organizational evacuations: disaster planning by managers of tourist-oriented private firms." *International Journal of Mass Emergencies and Disasters*. 9, (2), 219–245.
- Firewise2000 2019. *Ocean Breeze Fire Protection Plan*. Prepared for North County Fire Protection District. July 2019.
- Fitzpatrick, C. and D.S. Mileti. 1994. "Public Risk Communication." In *Disasters, Collective Behavior, and Social Organization*. Dynes R. R. and Tierney, K.J. (Eds). 1994. Newark University of Delaware Press, 71–98.
- Gordon, R. 2006. "Acute Responses to Emergencies: findings and observations of 20 years in the field." *The Australian Journal of Emergency Management*, Vol. 21, No. 1, February 2006. 23 pp.
- FEMA. 2008. Mass Evacuation Incident Annex. Federal Emergency Management Agency. 20 pp. Firescope 2013. International Fire Chiefs Association. "Ready, Set, Go!" website link: <http://wildlandfirersg.org/>.
- Lindell, M.K. and R.W. Perry. 2004. *Communicating Environmental Risk in Multiethnic Communities*. Thousand Oaks, California: Sage Publications.
- Quarantelli, E.L. and R.R. Dynnes. 1977. "Response to social crisis and disasters." *Annual Review of Sociology*. 3, 23–49.
- San Diego County. 2018. Annex Q Evacuation. Unified San Diego County Emergency Services Organization and County of San Diego Operational Area Emergency Operations Plan. 84 pp. September 2014.
- San Diego County. 2017 Lilac Fire After Action Report. Produced by the County of San Diego. December 2017.
- Sorensen, J., and B.Vogt. 2006. *Interactive Emergency Evacuation Guidebook*. Prepared for the Protective Action IPT – Chemical Stockpile Emergency Preparedness Program.
- Vogt, B. 1990. *Evacuation Of Institutionalized And Specialized Populations, ORNL/SUB-7685/1 & T23*. Oak Ridge, TN: Oak Ridge National Laboratory.

Vogt, B. 1991. "Issues in nursing home evacuations." *International Journal of Mass Emergencies and Disasters*, 9, 247-265.

Wolshon B. and E. Marchive. 2007. "Planning in the Urban Wildland Interface: Moving Residential Subdivision Traffic During Wildfires." *ASCE J. Urban Plann. Dev.* - Special Emergency Transportation Issue. 133(1) 73-81.

Appendix A

"Ready, Set, Go!"

Personal Wildland Fire Action Guide

READY, SET, GO!

YOUR PERSONAL WILDLAND FIRE ACTION GUIDE



READY, SET, GO!

Wildland Fire Action Guide

Saving Lives and Property
through Advance Planning



Fire is a constant threat in San Diego County, and drought, high temperatures in the summer and fall, combined with seasonal Santa Ana winds can lead to explosive fire growth.

In San Diego County, first responders are busy year-round fighting fires. When large fires threaten our community, local, state, federal, tribal, military and other agencies work together to save lives, protect property, and help those impacted by the disaster.

First responders can't do it alone though. Residents, especially those in the Wildland Urban Interface, play a critical role in being prepared for wildfires before, during, and after the next one strikes.

This guide has been modeled off of the Ready, Set, Go! program that is used locally, throughout California, and across the nation. This version is customized for San Diego County, with important local tips and information.

Use this guide to get "Ready" by making your home hardened against wildfire by using defensible space and smart fire resistant building and design choices. Create and practice a family disaster plan that includes storing essentials like food and water supplies, knowing how you'll meet up or communicate with each other, where you can safely evacuate to, and other important information.

Visit ReadySanDiego.org to register with AlertSanDiego to receive emergency alerts via email, text, cell and landline phones, and download the SD Emergency App to get the latest emergency updates delivered to your Android/iOS devices.



Be "Set" and prepared to leave when in danger by monitoring local media, viewing disaster updates on SDCountyEmergency.com, talking with 2-1-1 San Diego, and taking important steps to harden your home even further when you decide to evacuate.

Finally, be able to "Go" and go early, both to keep you and your family safe, and to make it easier for first responders to get into your community.

This guide is a great place to start as you take action to protect your family home, and community.

Tony Mecham, County Fire Chief

INSIDE

Wildland Fire Urban Interface	3
What is Defensible Space?	4
Making Your Home Fire Resistant	5
A Wildland Fire-Ready Home	6-7
Ready – Prepare Your Family – Checklist	8
Set – As the Fire Approaches – Checklist	9
Go – Leave Early – Checklist	10
Returning Home - Checklist	11
Safety Checklist	12

Photos courtesy of CAL FIRE, FEMA and ©Kevin Pack/K.E. Photography

This publication was prepared by the International Association of Fire Chief's RSG! Program and; the USDA Forest Service, U.S. Department of the Interior, and the U.S. Fire Administration. Special thanks to Insurance Institute for Business and Home Safety for program support. To learn more about the Ready, Set, Go! Program and its partners, visit www.wildlandfireRSG.org.

This publication was prepared under a grant from FEMA's Grant Programs Directorate, U.S. Department of Homeland Security. Points of view or opinions expressed in this document are those of the authors and do not necessarily represent the official position or policies of FEMA's Grant Programs Directorate or the U.S. Department of Homeland Security.

Living in the Wildland Urban Interface and the Ember Zone

Ready, Set, Go! begins with a house that firefighters can defend

Defensible Space Works!

If you live next to a naturally vegetated area, often called the Wildland Urban Interface, provide firefighters with 100 feet of defensible space to protect your home. The buffer zone you create by removing weeds, brush and thinning vegetation helps keep the fire away from your home and reduces the risk from flying embers. Firewise Communities and your local fire department's brush management guidelines provide valuable guidance on property enhancements.



A home within one mile of a natural area is in the Ember Zone. Wind-driven embers can attack your home. You and your home must be prepared well before a fire occurs. Ember fires can destroy homes or neighborhoods far from the actual flame front of the wildland fire.



What is Defensible Space?



Defensible space is the required space between a structure and the wildland area that, under normal conditions, creates a sufficient buffer to slow or halt the spread of wildland fire to a structure. It protects the home from igniting due to direct flame or radiant heat. Defensible space is essential for structure survivability during wildland fire conditions. For more information about defensible space zones and preparedness techniques within each, visit ReadySanDiego.org/wildland-fire

ZONE ONE

Zone One extends 50 feet from your home.

- Must be permanently irrigated to maintain green and healthy plants.
- Is primarily low-growing plant material, with the exception of trees. Plants shall be low-fuel and fire-resistive.
- Trim tree canopies regularly to remove dead wood and keep branches a minimum of 10 feet from structures, chimney outlets and other trees.
- Remove leaf litter (dry leaves/pine needles) from yard, roof and rain gutters.
- Relocate woodpiles and other combustible materials into Zone Two.
- Remove combustible material and vegetation from around and under decks.
- Remove or prune vegetation near windows.
- Remove "ladder fuels" (low-level vegetation that would allow the fire to spread from the ground to the tree canopy). Create a separation between low-level vegetation and tree branches by reducing the height of the vegetation and/or trimming low branches.

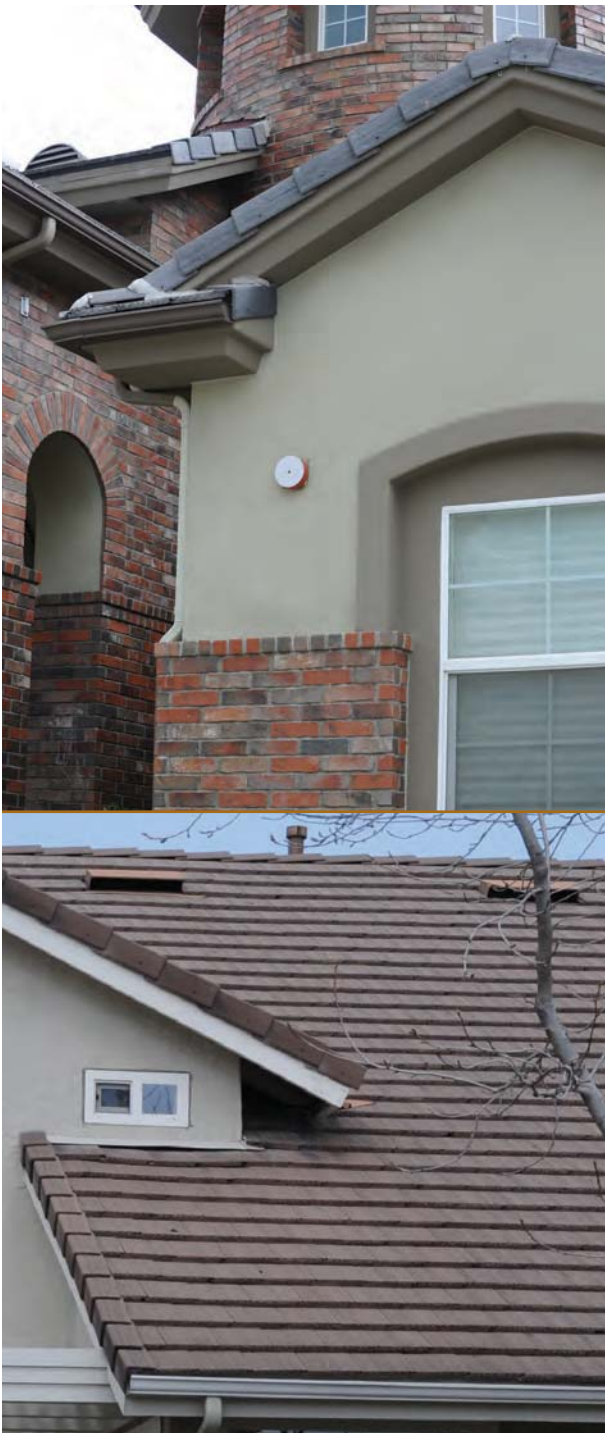
ZONE TWO

Zone Two extends 50 to 100 feet from your home.

- Minimize the chance of fire jumping from plant to plant by removing dead material and removing or thinning vegetation seasonally. The minimum spacing between vegetation is three times the dimension of the plant.
- There should be no permanent irrigation in Zone Two.
- Remove "ladder fuels."
- Cut or mow annual grass down to a maximum height of 4 inches.
- Trim tree canopies regularly to keep branches a minimum of 10 feet from other trees.

What is a Hardened Home?

Construction materials and the quality of the defensible space surrounding a home are what gives it the best chance to survive a wildland fire. Embers from a wildland fire can find the weak link in your home's fire protection scheme and gain the upper hand because of a small, overlooked or seemingly inconsequential factor. However, there are measures you can take to safeguard your home from wildland fire. While you may not be able to accomplish all the measures listed below, each will increase your home's, and possibly your family's, safety and survival during a wildland fire.



ROOFS

Roofs are the most vulnerable surface where embers land because they can lodge and start a fire. Roof valleys, open ends of barrel tiles and rain gutters are all points of entry.

EAVES

Embers can gather under open eaves and ignite exposed wood or other combustible material.

VENTS

Embers can enter the attic or other concealed spaces through vents and ignite combustible materials. Vents in eaves and cornices are particularly vulnerable, as are any unscreened vents.

WALLS

Combustible siding or other combustible or overlapping materials provide surfaces or crevices for embers to nestle and ignite.

WINDOWS and DOORS

Embers can enter through open windows and gaps in doors, including garage doors. Plants or combustible storage near windows can ignite from embers and generate heat that can break windows and/or melt combustible frames.

BALCONIES and DECKS

Embers can collect in or on combustible surfaces or the undersides of decks and balconies, ignite the material and enter the home through walls or windows.

To harden your home further, consider protecting your home with a residential fire sprinkler system. In addition to extinguishing a fire started by an ember that enters your home, it also protects you and your family year-round from any fire that may start in your home.

Tour a Wildland Fire Prepared Home

Home Site and Yard: Ensure you have at least a 100-foot radius of defensible space (thinned vegetation) around your home. Note that even more clearance may be needed for homes in severe hazard areas. This means looking beyond what you own to determine the impact a common slope or neighbors' yard will have on your property during a wildland fire.

Cut and remove dry weeds and grass before noon when temperatures are cooler to reduce the chance of sparking a fire.

Landscape with fire-resistant plants that have a high moisture content and are low-growing.

Keep woodpiles, propane tanks and combustible materials away from your home and other structures such as garages, barns and sheds.

Ensure that trees are far away from power lines.

Inside: Keep working fire extinguishers on hand. Install smoke alarms and carbon monoxide detectors on each level of your home and near bedrooms. Test them monthly and change the batteries twice a year.

Address: Make sure your address is clearly visible from the road.

Roof: Your roof is the most vulnerable part of your home because it can easily catch fire from wind-blown embers. Homes with wood-shake or shingle roofs are at high risk of being destroyed during a wildland fire.

Build your roof or re-roof with fire-resistant materials such as composition, metal or tile. Block any spaces between roof decking and covering to prevent ember intrusion.

Clear pine needles, leaves and other debris from your roof and gutters.

Cut any tree branches within ten feet of your roof.

Vents: Vents on homes are particularly vulnerable to flying embers.

All vent openings should be covered with $\frac{1}{8}$ inch metal mesh. Do not use fiberglass or plastic mesh because they can melt and burn.

Attic vents in eaves or cornices should be baffled or otherwise protected to prevent ember intrusion (mesh is not enough).

Windows: Heat from a wildland fire can cause windows to break even before the home ignites. This allows burning embers to enter and start internal fires. Single-paned and large windows are particularly vulnerable.


Install dual-paned windows with the exterior pane of tempered glass to reduce the chance of breakage in a fire.

Limit the size and number of windows in your home that face large areas of vegetation.

Walls: Wood products, such as boards, panels or shingles, are common siding materials. However, they are combustible and not good choices for fire-prone areas.

Build or remodel with fire-resistant building materials, such as brick, cement-fiber board, masonry or stucco.

Be sure to extend materials from foundation to roof.



Garage: Have a fire extinguisher and tools such as a shovel, rake, bucket and hoe available for fire emergencies.

Install a solid door with self-closing hinges between living areas and the garage. Install weather stripping around and under door to prevent ember intrusion.

Store all combustibles and flammable liquids away from ignition sources.

Driveways and Access Roads: Driveways should be designed to allow fire and emergency vehicles and equipment to reach your house.

Access roads should have a minimum 10-foot clearance on either side of the traveled section of the roadway and should allow for two-way traffic.

Ensure that all gates open inward and are wide enough to accommodate emergency equipment.

Trim trees and shrubs overhanging the road to a minimum of 13½ feet to allow emergency vehicles to pass.

Non-Combustible Fencing: Make sure to use non-combustible fencing to protect your home during a wildland fire.

Non-Combustible Boxed In Eaves: Box in eaves with non-combustible materials to prevent accumulation of embers.

Raingutters: Screen or enclose rain gutters to prevent accumulation of plant debris.

Water Supply: Have multiple garden hoses that are long enough to reach any area of your home and other structures on your property.
If you have a pool or well, consider a pump.

Chimney: Cover your chimney and stovepipe outlets with a non-flammable screen of ½ inch wire mesh or smaller to prevent embers from escaping and igniting a fire.

Make sure that your chimney is at least 10 feet away from any tree branches.

Decks and Balconies: Decks, balconies, and other floor projections and attachments must be of one – or a combination – of the following:

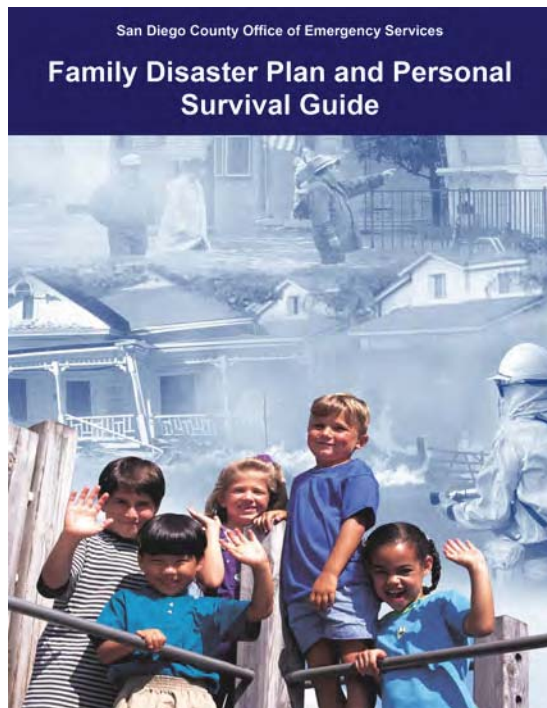
- non-combustible construction (e.g., concrete, metal)
- protected by one-hour fire-resistive material (e.g., stucco, cement-fiber board, ceramic tile, deck surface listed by approved evaluation service as one-hour-rated or Class A roof covering)
- approved fire-retardant treated materials (factory-applied fire retardant, pressure-treated lumber, listed for exterior use, installed per listing)
- heavy timber construction (minimum 4x8 joists, 4x10 or 6x8 beams, 3x ledgers, and 6x6 columns/posts)
- alternative decking materials per County Building Code 92.1.709A.1.4

READY, SET, GO!

Create Your Own Action Guide

Now that you've done everything you can to protect your house, it's time to prepare your family. Your **Wildland Fire Action Guide** must be prepared well in advance of a fire. Include *all* members of your household. Use these checklists to help you gain a situational awareness of the threat and to prepare your Wildland Fire Action Guide. For more information on property and home preparedness before a fire threat, review the preparedness checklist on the Firewise Communities website, www.firewise.org

Ready – Preparing for the Fire Threat



For a more extensive survival guide, please visit: ReadySanDiego.org/make-a-plan

- Create an in-depth family disaster plan at ReadySanDiego.org
- Register to receive emergency notifications on phone, cell, text, and email for your area. Sign up at AlertSanDiego.org
- Have fire extinguishers on hand
- Ensure that your family knows the location of your utility shut-off controls
- Plan and practice several different evacuation routes
- Designate an emergency meeting location
- Assemble an emergency supply kit (water, food, medicine)
- Maintain a list of emergency contact numbers
- Have a portable radio



All the information in your hands when you need it! Get the SD Emergency App for Android and iOS!



Find out how to volunteer, and get the most up-to-date disaster information! Call 2-1-1



Visit ReadySanDiego.org for all your preparedness needs! Get a plan, get the app, get informed!

Set – Situational Awareness when a Fire Starts

- Alert family and neighbors
- Ensure that you have your emergency supply kit
- Stay tuned to media, visit: SDCountyEmergency.com
- Close all windows and doors, leaving them unlocked
- Remove flammable window shades and curtains
- Move furniture to the center of the room
- Turn off pilot lights and air conditioning
- Leave inside and outside lights on so firefighters can see your house through smoke
- Bring patio furniture, children's toys, etc. inside
- Turn off propane tanks and other gas at the meter
- Don't leave sprinklers on or water running
- Back your car into the driveway to facilitate a quick departure

- Cover attic and ground vents with pre-cut plywood or commercial covers
- Call 2-1-1 for all non-emergency inquiries or visit: 211SanDiego.org

IF YOU ARE TRAPPED: SURVIVAL TIPS

- Call 9-1-1
- Remain inside your home until the fire passes
- Shelter away from outside walls
- Bring garden hoses inside the house so embers don't destroy them
- Patrol inside your home for spot fires and extinguish any you find
- Wear long sleeves and long pants made of natural fibers such as cotton
- Stay hydrated
- Ensure you can exit the home if it catches fire (remember if it is hot inside the house, it is four to five times hotter outside)
- Fill sinks and tubs for an emergency water supply
- Place wet towels under doors to keep smoke and embers out
- After the fire has passed, check your home and roof. Extinguish any fires, sparks or embers
- Check inside the attic for hidden embers
- If there are fires that you cannot extinguish with a small amount of water or in a short period of time, call 9-1-1



Go – Leave Early

By leaving early, you give your family the best chance of surviving a wildland fire. You also help firefighters by keeping roads clear of congestion.

WHEN TO LEAVE

Do not wait to be advised to leave if there is a possible threat to your home or evacuation route. Leave early enough to avoid being caught in fire, smoke or road congestion. If you are advised to leave by local authorities, do not hesitate!

MEETING LOCATION

Travel to a predetermined location. It should be a low-risk area, such as a well-prepared neighbor or relative's house, a shelter or motel, etc.

HOW TO GET THERE

Know several travel routes out of your community in case one route is blocked by the fire or by emergency vehicles.

WHAT TO TAKE

Take your emergency supply kit containing your prepared family and pet's necessary items.



The County of San Diego Office of Emergency Services has a free, printable, All Hazards Family Disaster Plan and Survival Guide at: ReadySanDiego.org/make-a-plan

Here is a brief checklist to get your emergency supply kit started.

- Three-day supply of water (one gallon per person per day)
- Non-perishable food for all family members and pets (three-day supply)
- First aid kit
- Flashlight, battery-powered radio, and extra batteries
- An extra set of car keys, credit cards and cash or traveler's checks
- Sanitation supplies
- Extra eyeglasses or contact lenses
- Important family documents and contact numbers
- Map marked with evacuation routes
- Prescriptions or special medications
- Family photos, valuable and other irreplaceable items that are easy to carry
- Personal computers, hard drives, disks and flash drivers
- Chargers for electronic communication devices

Note: Keep a pair of old shoes and a flashlight handy in case of a sudden evacuation at night.

Why can't I immediately return home?

Although a fire has been contained or extinguished there are post-hazard concerns that must be addressed before re-entry into the impacted area(s) may be permitted. Priorities for re-entry include:

1. Safety
2. Security
3. Damage Assessment
4. Restoration of Services
5. Communication of Information

The impacted areas must be thoroughly investigated to ensure it is safe for residents to return and that services have been restored. You will be notified of the re-entry status through: *emergency broadcast radio, television, internet www.SDCountyEmergency.com, 2-1-1, community briefings, and informational updates at shelters.*

Returning Home

After a disaster, **DO NOT attempt to return to your home or cross any barriers or caution tape without permission from law enforcement officials.** When returning home, be cautious in your neighborhood and watch out for:

- Emergency personnel still operating in the area.
- Power lines lying on the ground.
- Small fires that may flare up without warning.
- Ash pits, which are holes filled with hot ash created by burned trees.
- Damaged buildings or debris (including glass, nails, etc.)
- Charred power poles and trees that may be unstable and fall.

Take the following precautions when attempting to enter your house:

<p>POWER:</p> <p><i>If a person or piece of equipment comes in contact with an electric line, or if a line is down or broken.</i></p> <ul style="list-style-type: none"><input type="checkbox"/> Call 9-1-1.<input type="checkbox"/> If you see an electrical fire, fight it with a dry CO(2) extinguisher.<input type="checkbox"/> If possible, shut off the power.<input type="checkbox"/> Don't touch the person or any equipment involved. The line may still be energized and dangerous.<input type="checkbox"/> Freeing someone from energized power lines or equipment should only be attempted by a qualified SDG&E employee or a trained rescuer such as a fire fighter.<input type="checkbox"/> Always assume that power lines are energized.<input type="checkbox"/> Do not smoke or attempt to light anything. Use a flashlight instead.	<p>GAS:</p> <ul style="list-style-type: none"><input type="checkbox"/> Check to see if your gas utility is working properly. If you smell gas, leave your home immediately, and call (24/7) SDG&E at 1-800-411-7343.<input type="checkbox"/> DO NOT light a match, candle, or cigarette.<input type="checkbox"/> DO NOT turn electrical devices on or off, including light switches.<input type="checkbox"/> DO NOT start an engine or use any device, including a telephone, which could cause a spark.<input type="checkbox"/> DO NOT attempt to control the leak or repair the damaged pipe or meter. Do not use or turn off any equipment that could cause a spark.
<ul style="list-style-type: none"><input type="checkbox"/> Check for burning embers on roofs, gutters, porches, attic, crawlspace, and throughout your property for several days after a wildfire.	<ul style="list-style-type: none"><input type="checkbox"/> Check for any structural damage before entering your home. If you are uncertain, have your home professionally inspected before returning.
<ul style="list-style-type: none"><input type="checkbox"/> Do not smoke or attempt to light anything as there could be flammables or leaking gases. Use a flashlight instead.	<ul style="list-style-type: none"><input type="checkbox"/> Open windows and doors to allow airflow, which will help dry out of any water damage areas.

San Diego Gas & Electric can be reached at 1-800-411-7343 or SDGE.com/customer-service/contact-us. For more information on damage assessment visit the County's Recovery page at SDCountyRecovery.com.

Fire Action Guide

Out of Area Contact: _____ **Phone #:** _____

Work: _____ **School:** _____ **Other:** _____

Evacuation Routes: _____

Meeting Location: _____ **Location of Supply Kit:** _____

Information: SDCountyEmergency.com 211SanDiego.org **SD Emergency App**

You can create a more in-depth plan for free at: ReadySanDiego.org/make-a-plan



READY, SET, GO!

Safety Checklist

Tips To Improve Family and Property Survival During A Wildland Fire

Home

- | | Yes | No |
|--|--------------------------|--------------------------|
| 1. Does your home have a metal, composition, tile or other non-combustible roof with capped ends and covered fascia? | <input type="checkbox"/> | <input type="checkbox"/> |
| 2. Are the rain gutters and roof free of leaves, needles and branches? | <input type="checkbox"/> | <input type="checkbox"/> |
| 3. Are all vent openings screened with 1/8 inch non-combustible, corrosion-resistant metal mesh? | <input type="checkbox"/> | <input type="checkbox"/> |
| 4. Are approved spark arrestors on chimneys? | <input type="checkbox"/> | <input type="checkbox"/> |
| 5. Does the house have non-combustible siding material? | <input type="checkbox"/> | <input type="checkbox"/> |
| 6. Are the eaves "boxed in" and the decks enclosed? | <input type="checkbox"/> | <input type="checkbox"/> |
| 7. Are the windows dual-paned or tempered glass? | <input type="checkbox"/> | <input type="checkbox"/> |
| 8. Are decks, porches and similar areas made of non-combustible material and are they free of easily combustible material? | <input type="checkbox"/> | <input type="checkbox"/> |
| 9. Is all firewood at least 30 feet from the house? | <input type="checkbox"/> | <input type="checkbox"/> |

Defensible Space

- | | Yes | No |
|--|--------------------------|--------------------------|
| 1. Has dead vegetation been removed from the defensible space zones around your home? (Consider adding distance due to slope of property.) | <input type="checkbox"/> | <input type="checkbox"/> |
| 2. Is the required separation between shrubs maintained? | <input type="checkbox"/> | <input type="checkbox"/> |
| 3. Have ladder fuels been removed? | <input type="checkbox"/> | <input type="checkbox"/> |
| 4. Is there a clean and green area extending at least 50 feet from the house? | <input type="checkbox"/> | <input type="checkbox"/> |
| 5. Is there a non-combustible area within five feet of the house? | <input type="checkbox"/> | <input type="checkbox"/> |
| 6. Is the required separation between trees and crowns maintained? | <input type="checkbox"/> | <input type="checkbox"/> |

Emergency Access

- | | Yes | No |
|---|--------------------------|--------------------------|
| 1. Is the home address plainly legible and visible from the street? | <input type="checkbox"/> | <input type="checkbox"/> |
| 2. Are trees and shrubs overhanging the street trimmed to 15½ feet? | <input type="checkbox"/> | <input type="checkbox"/> |
| 3. If your home has a long driveway, does it have a suitable turnaround area? | <input type="checkbox"/> | <input type="checkbox"/> |



Appendices B-1 through B-4

Family Disaster Plan and Personal Survival Guide



Additional Items to Consider Adding to an Emergency Supply Kit:

- Prescription medications and glasses
- Infant formula and diapers
- Pet food and extra water for your pet
- Important family documents such as copies of insurance policies, identification and bank account records in a waterproof, portable container
- Cash or traveler's checks and change
- Emergency reference material such as a first aid book or information from www.ready.gov
- Sleeping bag or warm blanket for each person. Consider additional bedding if you live in a cold-weather climate.
- Complete change of clothing including a long sleeved shirt, long pants and sturdy shoes. Consider additional clothing if you live in a cold-weather climate.
- Household chlorine bleach and medicine dropper – When diluted nine parts water to one part bleach, bleach can be used as a disinfectant. Or in an emergency, you can use it to treat water by using 16 drops of regular household liquid bleach per gallon of water. Do not use scented, color safe or bleaches with added cleaners.
- Fire Extinguisher
- Matches in a waterproof container
- Feminine supplies and personal hygiene items
- Mess kits, paper cups, plates and plastic utensils, paper towels
- Paper and pencil
- Books, games, puzzles or other activities for children



Ready

Prepare. Plan. Stay Informed.®



Emergency Supply List



FEMA

www.ready.gov

Recommended Items to Include in a Basic Emergency Supply Kit:



Water, one gallon of water per person per day for at least three days, for drinking and sanitation

Food, at least a three-day supply of non-perishable food

Battery-powered or hand crank radio and a NOAA Weather Radio with tone alert and extra batteries for both

Flashlight and extra batteries

First aid kit

Whistle to signal for help

Dust mask, to help filter contaminated air and plastic sheeting and duct tape to shelter-in-place

Moist towelettes, garbage bags and plastic ties for personal sanitation

Wrench or pliers to turn off utilities

Can opener for food (if kit contains canned food)

Local maps

Through its *Ready Campaign*, the Federal Emergency Management Agency educates and empowers Americans to take some simple steps to prepare for and respond to potential emergencies, including natural disasters and terrorist attacks. *Ready* asks individuals to do three key things: get an emergency supply kit, make a family emergency plan, and be informed about the different types of emergencies that could occur and their appropriate responses.

All Americans should have some basic supplies on hand in order to survive for at least three days if an emergency occurs. Following is a listing of some basic items that every emergency supply kit should include. However, it is important that individuals review this list and consider where they live and the unique needs of their family in order to create an emergency supply kit that will meet these needs. Individuals should also consider having at least two emergency supply kits, one full kit at home and smaller portable kits in their workplace, vehicle or other places they spend time.


Ready



FEMA

Federal Emergency Management Agency
Washington, DC 20472



BE SMART. TAKE PART. CREATE YOUR FAMILY EMERGENCY COMMUNICATION PLAN

Join with others to prepare for emergencies and participate in America's PrepareAthon! | ready.gov/prepare

Creating your *Family Emergency Communication Plan* starts with one simple question: "What if?"

"What if something happens and I'm not with my family?" "Will I be able to reach them?" "How will I know they are safe?" "How can I let them know I'm OK?" During a disaster, you will need to send and receive information from your family.

Communication networks, such as mobile phones and computers, could be unreliable during disasters, and electricity could be disrupted. Planning in advance will help ensure that all the members of your household—including children and people with disabilities and others with access and functional needs, as well as outside caregivers—know how to reach each other and where to meet up in an emergency. Planning starts with three easy steps:



1. COLLECT.

Create a paper copy of the contact information for your family and other important people/offices, such as medical facilities, doctors, schools, or service providers.



2. SHARE.

Make sure everyone carries a copy in his or her backpack, purse, or wallet. If you complete your *Family Emergency Communication Plan* online at ready.gov/make-a-plan, you can print it onto a wallet-sized card. You should also post a copy in a central location in your home, such as your refrigerator or family bulletin board.



3. PRACTICE.

Have regular household meetings to review and practice your plan.

**TEXT
IS
BEST!**

If you are using a mobile phone, a text message may get through when a phone call will not. This is because a text message requires far less bandwidth than a phone call. Text messages may also save and then send automatically as soon as capacity becomes available.

The following sections will guide you through the process to create and practice your *Family Emergency Communication Plan*.



HOUSEHOLD INFORMATION

Write down phone numbers and email addresses for everyone in your household. Having this important information written down will help you reconnect with others in case you don't have your mobile device or computer with you or if the battery runs down. If you have a household member(s) who is Deaf or hard of hearing, or who has a speech disability and uses traditional or video relay service (VRS), include information on how to connect through relay services on a landline phone, mobile device, or computer.

SCHOOL, CHILDCARE, CAREGIVER, AND WORKPLACE EMERGENCY PLANS

Because a disaster can strike during school or work hours, you need to know their emergency response plans and how to stay informed. Discuss these plans with children, and let them know who could pick them up in an emergency. Make sure your household members with phones are signed up for alerts and warnings from their school, workplace, and/or local government. To find out more about how to sign up, see *Be Smart. Know Your Alerts and Warnings* at <http://1.usa.gov/1BDloze>. For children without mobile phones, make sure they know to follow instructions from a responsible adult, such as a teacher or principal.

OUT-OF-TOWN CONTACT

It is also important to identify someone outside of your community or State who can act as a central point of contact to help your household reconnect. In a disaster, it may be easier to make a long-distance phone call than to call across town because local phone lines can be jammed.

EMERGENCY MEETING PLACES

Decide on safe, familiar places where your family can go for protection or to reunite. Make sure these locations are accessible for household members with disabilities or access and functional needs. If you have pets or service animals, think about animal-friendly locations. Identify the following places:

- Indoor:* If you live in an area where tornadoes, hurricanes, or other high-wind storms can happen, make sure everyone knows where to go for protection. This could be a small, interior, windowless room, such as a closet or bathroom, on the lowest level of a sturdy building, or a tornado safe room or storm shelter.
- In your neighborhood:* This is a place in your neighborhood where your household members will meet if there is a fire or other emergency and you need to leave your home. The meeting place could be a big tree, a mailbox at the end of the driveway, or a neighbor's house.
- Outside of your neighborhood:* This is a place where your family will meet if a disaster happens when you're not at home and you can't get back to your home. This could be a library, community center, house of worship, or family friend's home.

- Outside of your town or city:* Having an out-of-town meeting place can help you reunite if a disaster happens and:

- You cannot get home or to your out-of-neighborhood meeting place; or
- Your family is not together and your community is instructed to evacuate the area.

This meeting place could be the home of a relative or family friend. Make sure everyone knows the address of the meeting place and discuss ways you would get there.

OTHER IMPORTANT NUMBERS AND INFORMATION

You should also write down phone numbers for emergency services, utilities, service providers, medical providers, veterinarians, insurance companies, and other services.



- Make copies of your *Family Emergency Communication Plan* for each member of the household to carry in his or her wallet, backpack, or purse. Post a copy in a central place at home. Regularly check to make sure your household members are carrying their plan with them.
- Enter household and emergency contact information into all household members' mobile phones or devices.
- Store at least one emergency contact under the name "In Case of Emergency" or "ICE" for all mobile phones and devices. This will help someone identify your emergency contact if needed. Inform your emergency contact of any medical issues or other requirements you may have.
- Create a group list on all mobile phones and devices of the people you would need to communicate with if there was an emergency or disaster.
- Make sure all household members and your out-of-town contact know how to text if they have a mobile phone or device, or know alternative ways to communicate if they are unable to text.
- Read *Be Smart. Know Your Alerts and Warnings* at <http://1.usa.gov/1BDloze> and sign up to receive emergency information.



Once you have completed your *Family Emergency Communication Plan*, made copies for all the members of your household, and discussed it, it's time to practice!

Here are some ideas for practicing your plan:

- Practice texting and calling. Have each person practice sending a text message or calling your out-of-town contact and sending a group text to your mobile phone group list.
- Discuss what information you should send by text. You will want to let others know you are safe and where you are. Short messages like "I'm OK. At library" are good.

- Talk about who will be the lead person to send out information about the designated meeting place for the household.
- Practice gathering all household members at your indoor and neighborhood emergency meeting places. Talk about how each person would get to the identified out-of-neighborhood and out-of-town meeting places. Discuss all modes of transportation, such as public transportation, rail, and para-transit for all family members, including people with disabilities and others with access and functional needs.
- Regularly have conversations with household members and friends about the plan, such as whom and how to text or call, and where to go.
- To show why it's important to keep phone numbers written down, challenge your household members to recite important phone numbers from memory—now ask them to think about doing this in the event of an emergency.
- Make sure everyone, including children, knows how and when to call 911 for help. You should only call 911 when there is a life-threatening emergency.
- Review, update, and practice your *Family Emergency Communication Plan* at least once a year, or whenever any of your information changes.

To help start the conversation or remind your family why you are taking steps to prepare and practice, you may want to watch the 4-minute video, *It Started Like Any Other Day*, about families who have experienced disaster, at www.youtube.com/watch?v=w_omgt3MEBs. Click on the closed captioning (CC) icon on the lower right to turn on the captioning.

After you practice, talk about how it went. What worked well? What can be improved? What information, if any, needs to be updated? If you make updates, remember to print new copies of the plan for everyone.

OTHER IMPORTANT TIPS FOR COMMUNICATING IN DISASTERS¹

- Text is best when using a mobile phone, but if you make a phone call, keep it brief and convey only vital information to emergency personnel and/or family or household members. This will minimize network congestion, free up space on the network for emergency communications, and conserve battery power. Wait 10 seconds before redialing a number. If you redial too quickly, the data from the handset to the cell sites do not have enough time to clear before you've re-sent the same data. This contributes to a clogged network.
- Conserve your mobile phone battery by reducing the brightness of your screen, placing your phone in airplane mode, and closing apps you do not need. Limit watching videos and playing video games to help reduce network congestion.
- Keep charged batteries, a car phone charger, and a solar charger available for backup power for your mobile phone, teletypewriters (TTYs), amplified phones, and caption phones. If you charge your phone in your car, be sure the car is in a well-ventilated area (e.g., not in a closed garage) to avoid life-threatening carbon monoxide poisoning.

¹ Federal Communications Commission, Public Safety and Homeland Security Bureau. (n.d.) *Tips for communicating in an emergency*. Retrieved from <http://transition.fcc.gov/pshs/emergency-information/tips.html>

- If driving, do not text, read texts, or make a call without a hands-free device.
- Maintain a household landline and analog phone (with battery backup if it has a cordless receiver) that can be used when mobile phone service is unavailable. Those who are Deaf or hard of hearing, or who have speech disabilities and use devices and services that depend on digital technology (e.g., VRS, Internet Protocol [IP] Relay, or captioning) should have an analog phone (e.g., TTY, amplified phone, or caption phone) with battery backup in case Internet or mobile service is down.
- If you evacuate and have a call-forwarding feature on your home phone, forward your home phone number to your mobile phone number.
- Use the Internet to communicate by email, Twitter, Facebook, and other social media networks. These communication channels allow you to share information quickly with a widespread audience or to find out if loved ones are OK. The Internet can also be used for telephone calls through Voice over Internet Protocol. For those who are Deaf or hard of hearing, or who have speech disabilities, you can make calls through your IP Relay provider.
- If you do not have a mobile phone, keep a prepaid phone card to use if needed during or after a disaster.
- Use a pay phone if available. It may have less congestion because these phones don't rely on electricity or mobile networks. In some public places, you may be able to find a TTY that can be used by those who are Deaf or hard of hearing, or who have speech disabilities.

America's PrepareAthon! is a grassroots campaign for action to get more people prepared for emergencies. Make your actions count at ready.gov/prepare.

The reader recognizes that the Federal Government provides links and informational data on various disaster preparedness resources and events and does not endorse any non-Federal events, entities, organizations, services, or products.



10 WAYS TO PARTICIPATE IN AMERICA'S PrepareAthon!



Access Alerts and Warnings



Test Communication Plans



Assemble or Update Supplies



Drill or Practice Emergency Response



Participate in a Class, Training, or Discussion



Plan with Neighbors



Conduct an Exercise



Make Property Safer



Document and Insure Property



Safeguard Documents

FAMILY EMERGENCY COMMUNICATION PLAN

HOUSEHOLD INFORMATION

Home #:

Address:.....

Name: Mobile #:

Other # or social media:

Email:

Important medical or other information:

.....

Name: Mobile #:

Other # or social media:

Email:

Important medical or other information:

.....

Name: Mobile #:

Other # or social media:

Email:

Important medical or other information:

.....

Name: Mobile #:

Other # or social media:

Email:

Important medical or other information:

.....

SCHOOL, CHILDCARE, CAREGIVER, AND WORKPLACE EMERGENCY PLANS

Name:

Address:.....

Emergency/Hotline #:

Website:

Emergency Plan/Pick-Up:

**SCHOOL,
CHILDCARE,
CAREGIVER, AND
WORKPLACE
EMERGENCY PLANS**

Name:
Address:.....
Emergency/Hotline #:
Website:
Emergency Plan/Pick-Up:

Name:
Address:.....
Emergency/Hotline #:
Website:
Emergency Plan/Pick-Up:

Name:
Address:.....
Emergency/Hotline #:
Website:
Emergency Plan/Pick-Up:

**IN CASE OF
EMERGENCY
(ICE) CONTACT**

Name: Mobile #:
Home #: Email:
Address:

**OUT-OF-TOWN
CONTACT**

Name: Mobile #:
Home #: Email:
Address:

**EMERGENCY
MEETING PLACES**

Indoor:
Instructions:
Neighborhood:
Instructions:

Out-of-Neighborhood:
Address:.....
Instructions:

Out-of-Town:
Address:.....
Instructions:

**IMPORTANT
NUMBERS OR
INFORMATION**

Police: Dial 911 or #:

Fire: Dial 911 or #:

Poison Control: #:

Doctor: #:

Doctor: #:

Pediatrician: #:

Dentist: #:

Hospital/Clinic: #:

Pharmacy: #:

Medical Insurance: #:

Policy #:

Medical Insurance: #:

Policy #:

Homeowner/Rental Insurance:

#:

Policy #:

Flood Insurance: #:

Policy #:

Veterinarian: #:

Kennel: #:

Electric Company: #:

Gas Company: #:

Water Company: #:

Alternate/Accessible Transportation:

#:

Other: #:

Other: #:

Other: #:





Write your family's name above

Family Emergency Communication Plan

HOUSEHOLD INFORMATION

Home #:
 Address:
 Name: Mobile #:
 Other # or social media: Email:
 Important medical or other information:

Name: Mobile #:
 Other # or social media: Email:
 Important medical or other information:

FOLD HERE

IN CASE OF EMERGENCY (ICE) CONTACT

Name: Mobile #:
 Home #: Email:
 Address:

OUT-OF-TOWN CONTACT

Name: Mobile #:
 Home #: Email:
 Address:

EMERGENCY MEETING PLACES

Indoor:
 Instructions:
 Neighborhood:
 Instructions:

FOLD HERE

Name: Mobile #:
 Other # or social media: Email:
 Important medical or other information:

Name: Mobile #:
 Other # or social media: Email:
 Important medical or other information:

Out-of-Neighborhood:
 Address:
 Instructions:

Out-of-Town:
 Address:
 Instructions:

FOLD HERE

SCHOOL, CHILDCARE, CAREGIVER, AND WORKPLACE EMERGENCY PLANS

Name:
 Address:
 Emergency/Hotline #: Website:
 Emergency Plan/Pick-Up:

Name:
 Address:
 Emergency/Hotline #: Website:
 Emergency Plan/Pick-Up:

Name:
 Address:
 Emergency/Hotline #: Website:
 Emergency Plan/Pick-Up:

IMPORTANT NUMBERS OR INFORMATION

Police: Dial 911 or #:
 Fire: Dial 911 or #:
 Poison Control: #:
 Doctor: #:
 Doctor: #:
 Pediatrician: #:
 Dentist: #:
 Medical Insurance: #:
 Policy #:
 Medical Insurance: #:
 Policy #:
 Hospital/Clinic: #:

Pharmacy: #:
 Homeowner/Rental Insurance: #:
 Policy #:
 Flood Insurance: #:
 Policy #:
 Veterinarian: #:
 Kennel: #:
 Electric Company: #:
 Gas Company: #:
 Water Company: #:
 Alternate/Accessible Transportation: #:
 Other:
 Other:

FOLD HERE



Family Disaster Plan

Family Last Name(s) or Household Address:

Date:

Family Member/Household Contact Info (If needed, additional space is provided in #10 below):

Name

Home Phone

Cell Phone

Email:

Pet(s) Info:

Name:

Type:

Color:

Registration #:

Plan of Action

1. The disasters most likely to affect our household are:

2. What are the escape routes from our home?

3. If separated during an emergency, what is our meeting place near our home?

4. If we cannot return home or are asked to evacuate, what is our meeting place outside of our neighborhood?

What is our route to get there and an alternate route, if the first route is impassible?

5. In the event our household is separated or unable to communicate with each other, our emergency contact outside of our immediate area is:

Name

Home Phone

Cell Phone

Email:

After a disaster, let your friends and family know you are okay by registering at "Safe and Well" at <https://safeandwell.communityos.org/cms/> or by calling 1-800-733-2767. You can also give them a call, send a quick text or update your status on social networking sites.

6. If at school/daycare, our child(ren) will be evacuated to:

Child's Name:

Evacuation Site (address and contact info):

7. Our plan for people in our household with a disability or special need is:

Person's Name:

Plan:

8. During certain emergencies local authorities may direct us to "shelter in place" in our home. An accessible, safe room where we can go, seal windows, vents and doors and listen to emergency broadcasts for instructions, is:

9. Family Member Responsibilities in the Event of a Disaster

Task	Description	Family Member Responsible
Disaster Kit*	Stock the disaster kit and take it if evacuation is necessary. Include items you might want to take to an evacuation shelter. Remember to include medications and eye glasses.	
Be informed	Maintain access to NOAA or local radio, TV, email or text alerts for important and current information about disasters.	
Family Medical Information	Make sure the household medical information is taken with us if evacuation is necessary.	
Financial Information	Obtain copies of bank statements and cash in the event ATMs and credit cards do not work due to power outages. Bring copies of utility bills as proof of residence in applying for assistance.	
Pet Information	Evacuate our pet(s), keep a phone list of pet-friendly motels and animal shelters, and assemble and take the pet disaster kit.	
Sharing and Maintaining the Plan	Share the completed plan with those who need to know. Meet with household members every 6 months or as needs change to update household plan.	

*What supplies and records should go in your disaster kit? Visit www.redcross.org

10. Other information, if not able to be included above.

Congratulations on completing your family disaster plan! Please tell others: "We've made a family disaster plan and you can, too, with help from the American Red Cross."

Get the facts about what you should do if an emergency or disaster occurs at www.redcross.org