








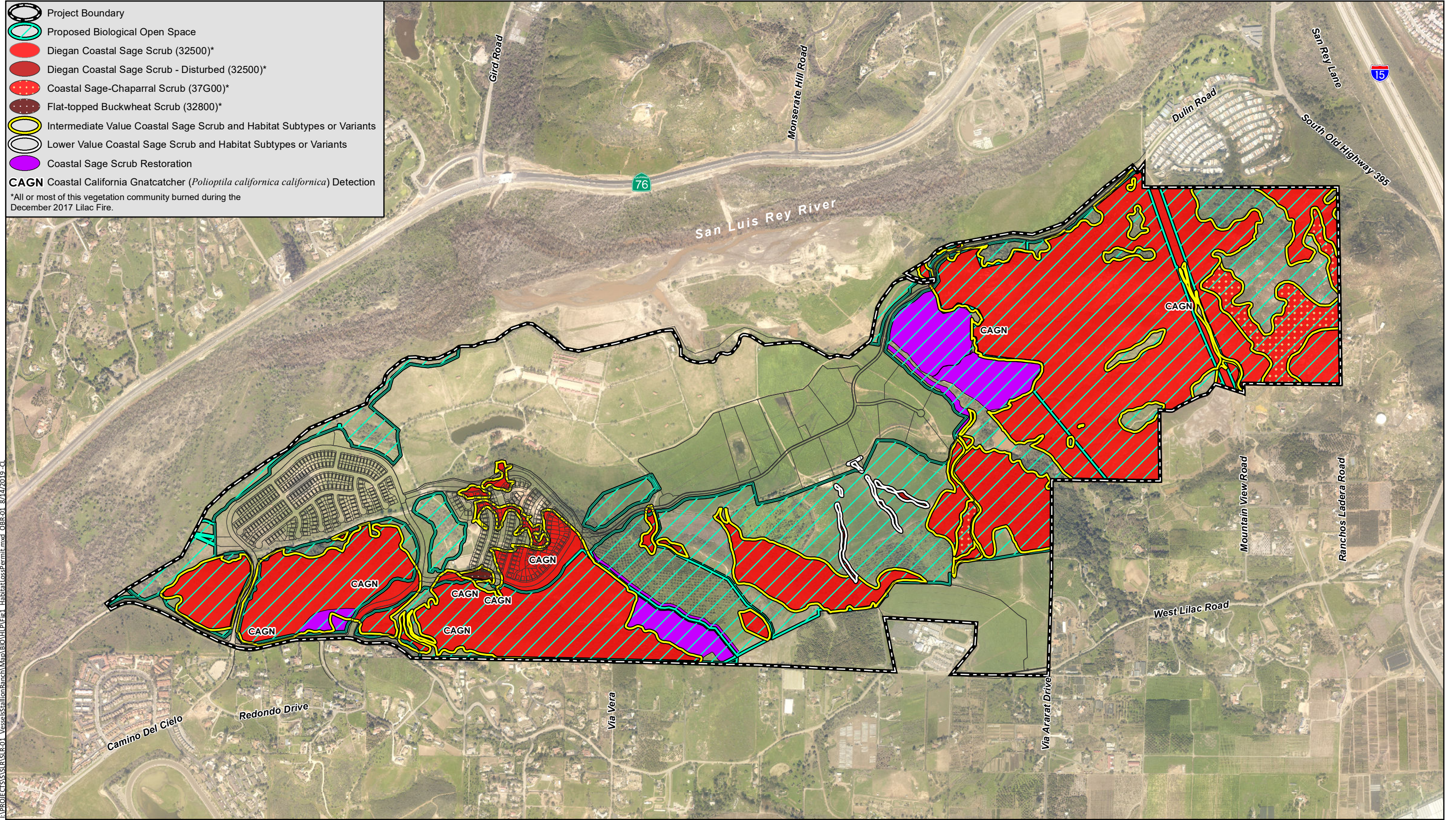


-  Project Boundary
-  Proposed Biological Open Space
-  Diegan Coastal Sage Scrub (32500)\*
-  Diegan Coastal Sage Scrub - Disturbed (32500)\*
-  Coastal Sage-Chaparral Scrub (37G00)\*
-  Flat-topped Buckwheat Scrub (32800)\*
-  Intermediate Value Coastal Sage Scrub and Habitat Subtypes or Variants
-  Lower Value Coastal Sage Scrub and Habitat Subtypes or Variants
-  Coastal Sage Scrub Restoration

**CAGN** Coastal California Gnatcatcher (*Polioptila californica californica*) Detection

\*All or most of this vegetation community burned during the December 2017 Lilac Fire.



I:\PROJECTS\SLR\SLR-01\_VesseyStationRanch\Map\BIO\HL\Fig1\_HabitatLossPermit.mxd\_OBR-01\_8/14/2019\_CJ

Source: Aerial (SanGIS, 2017)