

### **3.2 Effects Found Not Significant During Initial Study**

This section provides discussions of those effects that were identified as not significant or less than significant during the Initial Study process and did not require further analysis. The Initial Study is included as Appendix 1.0-1. Each issue addressed includes a brief discussion of existing conditions for the Proposed Project area and, where applicable, a description of regulations or policies. For the purpose of this EIR, the County's Guidelines of Determination of Significance apply to both the direct/indirect impacts analysis and the cumulative impact analysis. Where the County's Guidelines for Determining Significance do not address the effects considered, Appendix G of the California Environmental Quality Act (CEQA) Guidelines have been used as the basis for this analysis.

The following environmental areas were found to be not significant during the Environmental Initial Study process: Parks and Recreation, Mineral Resources, and Population and Housing. For all of the environmental issues below, the action to approve the Proposed Project would not be significant.

The Proposed Project consists of four renewable energy solar farms in southeastern San Diego County. The following impact analysis has been separated into discussions for each of the four solar farms: Tierra del Sol, Rugged, LanEast, and LanWest, as well as a combined discussion of the Proposed Project as a whole. For the purposes of this Program EIR, the Tierra del Sol and Rugged solar farms are analyzed at a project level, whereas the LanEast and LanWest solar farms are analyzed at a programmatic level as sufficient project-level data has not been developed at this time.

#### **3.2.1 Parks and Recreation**

##### **3.2.1.1 *Analysis of Project Effects***

The County's Guidelines for Determining Significance do not include sections on Public Services–Parks and Recreation. Therefore, for the purpose of this EIR, Appendix G of the California Environmental Quality Act (CEQA) Guidelines applies to the direct and indirect impact analysis, as well as the cumulative impact analysis.

A significant impact would result if the project would:

- result in substantial adverse physical impacts associated with the provision of new or physically altered governmental facilities, or the need for new or physically altered governmental facilities, the construction of which could cause significant environmental impacts, in order to maintain acceptable service ratios, response times or other performance objectives for any of the public services:
  - Parks

- increase the use of existing neighborhood and regional parks or other recreational facilities such that substantial physical deterioration of the facility would occur or be accelerated
- include recreational facilities or require the construction or expansion of recreational facilities which might have an adverse physical effect on the environment.

#### **3.2.1.1.1 Regional Overview**

The General Plan Conservation and Open Space Element establishes a goal of 10 acres of local park land and 15 acres of regional park land per every 1,000 persons in the unincorporated County. According to the Mountain Empire Subregional Plan of the County General Plan, the region currently has approximately 15 acres of local park land for every 1,000 population. However, the Boulevard Subregional Plan area, despite an abundance of open space, does not have any dedicated community parks or community facilities (County of San Diego 2011). Regional and local parks located near the project sites are ~~listed below in Table 3.2.1-1 and~~ shown on Figure 3.2.1-1.

In addition to the local and regional parks ~~shown listed above in Table Figure~~ 3.2.1-1, recreational activities are allowed on nearby federal lands. There are wilderness and Areas of Critical Environmental Concern (ACEC) managed by the Bureau of Lands Management (BLM) nearby, including the Sawtooth Mountain Wilderness, Carrizo Gorge Wilderness, and In-Ko-Pa Mountains. ACEC, which are east of the LanEast and LanWest sites, are shown on Figure 3.2.1-1. Limited recreational activities are allowed on these sites. Cleveland National Forest is located approximately 9 miles west/northwest of the project sites and includes several recreational facilities and activities, such as hiking, camping, mountain biking, horseback riding, and off-highway vehicle riding. The closest recreation areas within the national forest to the project sites are the Laguna Mountain Area and the Coral Canyon Area (USFS 2012).

#### **3.2.1.1.2 Tierra del Sol**

Demands for parks and recreational facilities are directly related to local population levels. The Tierra del Sol solar farm does not propose any residential use, included but not limited to a residential subdivision, mobile home park, or construction for a single-family residence that would cause a direct increase in population. The Tierra del Sol solar farm also does not include a recreational component, such as a hotel, resort, campground, or other facility that would attract or accommodate an increase in visitors to the area that would indirectly increase the use or demand for recreational and park facilities and services. The Tierra del Sol solar farm would temporarily increase the region's local population during construction by up to approximately 120 workers. These workers could use the nearby park and recreational facilities and services during construction. However, since they would be working in the area temporarily and are not expected to relocate to the area with their families, they are not expected to generate a substantial demand for local park services.

Once construction is complete, the Tierra del Sol solar farm would add up to five permanent employees who would be expected to reside in the surrounding area, possibly with their families. The indirect increase in population in the area caused by the Tierra del Sol solar farm would reside in existing housing or reside in new residential housing, which would have separate permit and approval processes through which impacts to parks and recreation services would be addressed.

Therefore, the Tierra del Sol solar farm is not considered to contribute to a substantial increase in demand for park and recreational services, and impacts to park and recreational services from the Tierra del Sol solar farm would be **less than significant**.

#### **3.2.1.1.3 Rugged**

Construction of the Rugged solar farm would require up to approximately 146 construction workers, the majority of which are not expected to use the area parks or recreational facilities and services. Once the solar farm is operational, it would employ up to 20 workers. As discussed earlier for the entire Tierra del Sol solar farm, the additional construction workers are not expected to permanently relocate to the area with their families, and therefore are not expected to cause a substantial increase in demand for parks and recreational facilities and services. The Rugged solar farm does not include a residential or recreational component that would cause permanent or temporary population increases and would not result in a substantial indirect increase in use and demand for park facilities and recreational services. Impacts to parks and recreational services would be **less than significant**.

#### **3.2.1.1.4 LanEast**

Construction of the LanEast solar farm would require up to approximately 30 construction workers, the majority of which are not expected to use the area parks or recreational facilities and services. Once the solar farm is operational, it would employ up to three workers. As discussed earlier for the entire Tierra del Sol solar farm, the additional construction workers are not expected to permanently relocate to the area with their families, and therefore are not expected to cause a substantial increase in demand for parks and recreational facilities and services. The LanEast solar farm does not include a residential or recreational component that would cause permanent or temporary population increases and would not result in a substantial indirect increase in use and demand for park facilities and recreational services. Impacts to parks and recreational services would be **less than significant**.

#### **3.2.1.1.5 LanWest**

Construction of the LanWest solar farm would require up to approximately 30 construction workers, the majority of which are not expected to use the area parks or recreational facilities

and services. Once the solar farm is operational, it would employ up to three workers. As discussed earlier for the entire Tierra del Sol solar farm, the additional construction workers are not expected to permanently relocate to the area with their families, and therefore are not expected to cause a substantial increase in demand for parks and recreational facilities and services. The LanWest solar farm does not include a residential or recreational component that would cause permanent or temporary population increases, and would not result in a substantial indirect increase in use and demand for park facilities and recreational services. Impacts to parks and recreational services would be **less than significant**.

#### **3.2.1.1.6 Proposed Project**

Demands for parks and recreational facilities are directly related to local population levels. The Proposed Project does not propose any residential use, included but not limited to a residential subdivision, mobile home park, or construction for a single-family residence that would cause a direct increase in population. The Proposed Project also does not include a recreational component, such as a hotel, resort, campground, or other facility that would attract or accommodate an increase in visitors to the area that would indirectly increase the use or demand for recreational and park facilities and services. The Proposed Project would temporarily increase the local population during construction by up to approximately 146 workers in the region. Though these workers could use the nearby park and recreational facilities and services during project construction, they are not expected to relocate to the area with their families, and they are not expected to generate a substantial demand for local park services. Any increase in use or demand for parks facilities and recreational services during construction of the Proposed Project is expected to be **less than significant**.

Once construction is complete, the Proposed Project would add a combined total of up to 31 permanent employees who would be expected to reside in the surrounding area. The indirect increase in population in the area caused by the Proposed Project would reside in existing housing or in new residential housing projects, which would have separate permit and approval processes through which impacts to parks and recreation services would be addressed. Therefore, the Proposed Project is not considered to contribute to a substantial increase in demand for park and recreational services, and impacts to park and recreational services from the Proposed Project would be **less than significant**.

#### **3.2.1.2 Cumulative Impact Analysis**

Demands for parks and recreational facilities are directly related to local population levels. The Proposed Project does not propose any residential use and does not include a recreational component, such as a hotel, resort, campground, or other facility that would attract or accommodate an increase in visitors to the area that would indirectly increase the use or demand for recreational and park facilities and services. The Proposed Project would temporarily increase the region's local population during construction by up to approximately 146 workers.

Though these workers could use the nearby park and recreational facilities and services during project construction, they are not expected to relocate to the area with their families or to generate a substantial demand for local park services. Cumulative impacts to local park and recreation services during construction would be considered **less than significant**.

Once construction is complete, the Proposed Project would add a combined total of up to 31 permanent employees who would be expected to reside in the surrounding area. The indirect increase in population in the area caused by the Proposed Project would reside in existing housing or in new residential housing projects, which would have separate permit and approval processes through which impacts to parks and recreation services would be addressed. Therefore, the Proposed Project is not considered to contribute substantially to a cumulatively considerable increase in demand for park and recreational services, and cumulative impacts to park and recreational services would be **less than significant**.

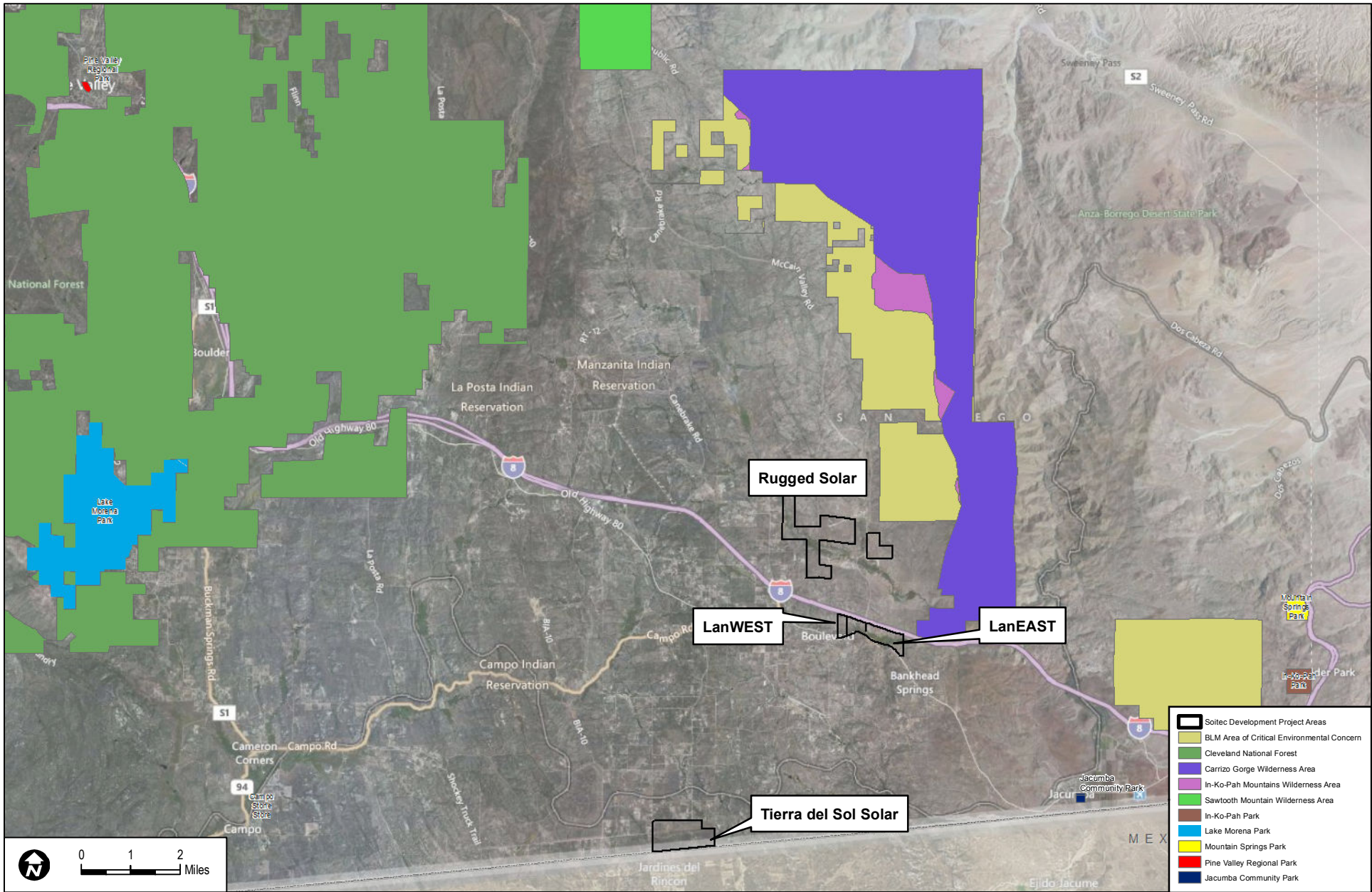
### **3.2.1.3 Mitigation Measures**

The Proposed Project would not result in any significant impacts to parks and recreational facilities and services. Therefore, no mitigation measures are required.

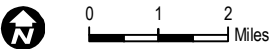
### **3.2.1.4 Conclusion**

The Proposed Project would not result in any significant impacts to parks and recreational facilities and services.

INTENTIONALLY LEFT BLANK



- Soitec Development Project Areas
- BLM Area of Critical Environmental Concern
- Cleveland National Forest
- Carrizo Gorge Wilderness Area
- In-Ko-Pah Mountains Wilderness Area
- Sawtooth Mountain Wilderness Area
- In-Ko-Pah Park
- Lake Morena Park
- Mountain Springs Park
- Pine Valley Regional Park
- Jacumba Community Park



**DUDEK**

SOURCE: Bing Maps

**FIGURE 3.2.1-1**

**Park and Recreational Resources**

7345

SOITEC SOLAR DEVELOPMENT PROGRAM EIR

INTENTIONALLY LEFT BLANK