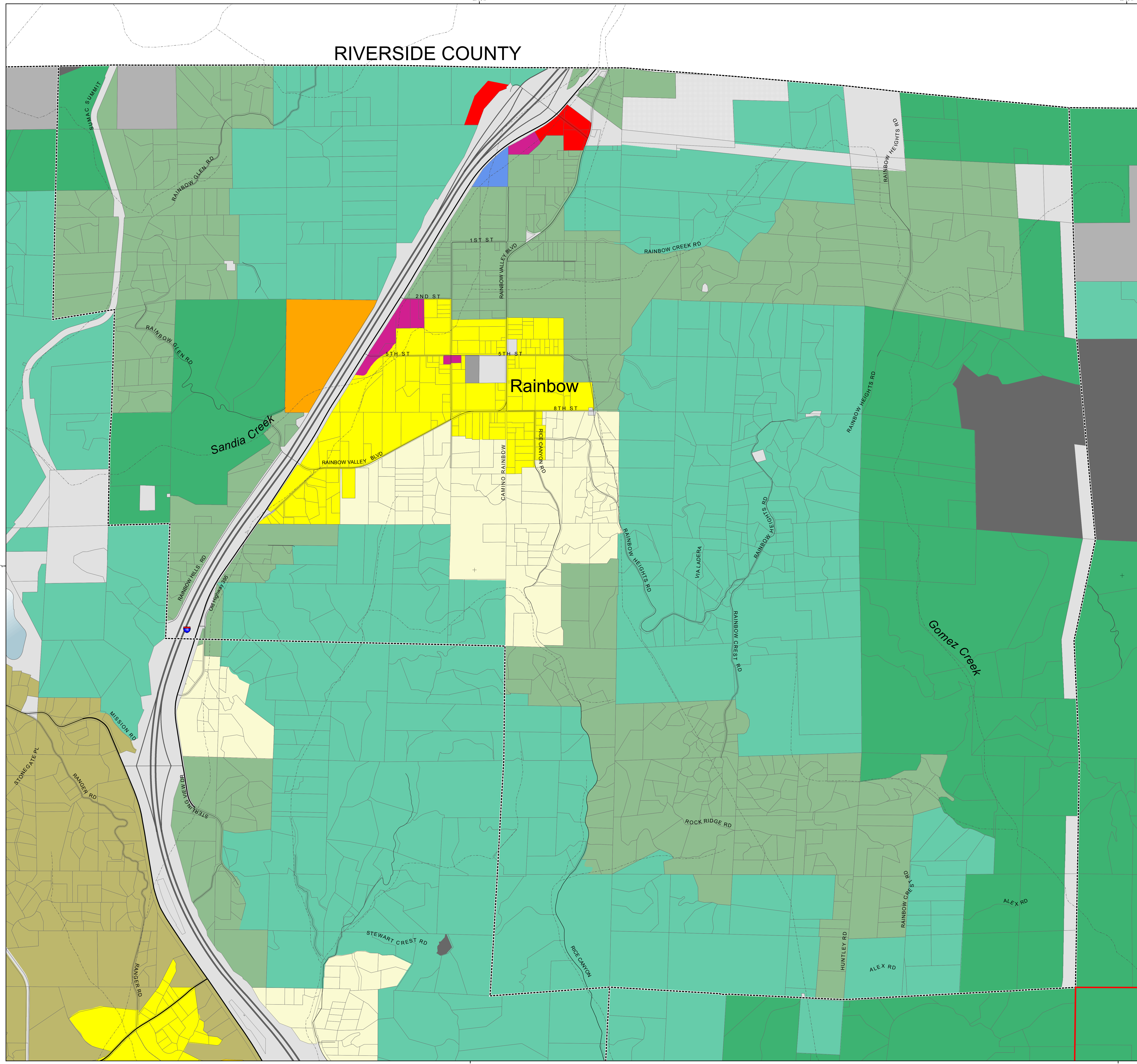


RIVERSIDE COUNTY

Rainbow Community Planning Area

General Plan Land Use Designations^{1,2}

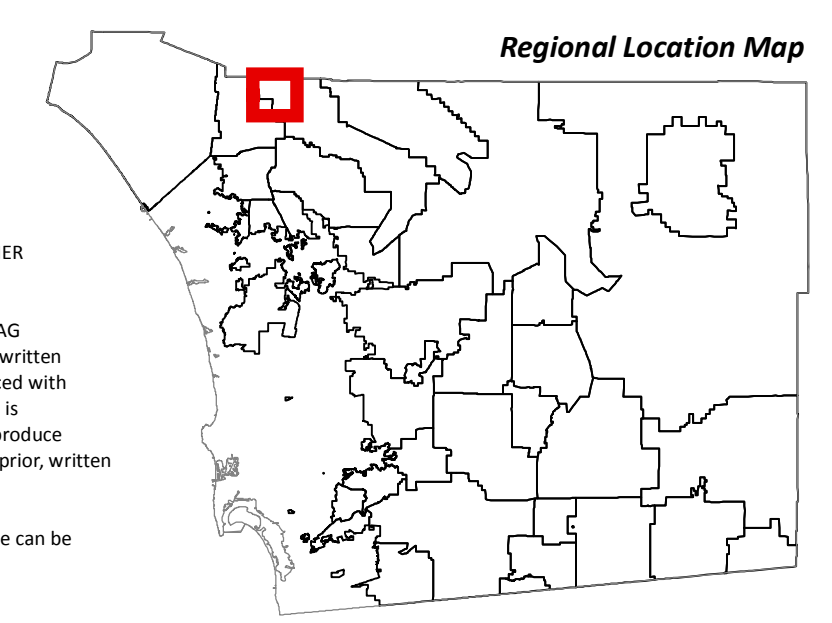
- Village Residential (VR-30)
- Village Residential (VR-24)
- Village Residential (VR-20)
- Village Residential (VR-15)
- Village Residential (VR-10.9)
- Village Residential (VR-7.3)
- Village Residential (VR-4.3)
- Village Residential (VR-2.9)
- Village Residential (VR-2)
- Semi-Rural Residential (SR-5)
- Semi-Rural Residential (SR-1)
- Semi-Rural Residential (SR-2)
- Semi-Rural Residential (SR-4)
- Semi-Rural Residential (SR-10)
- Rural Lands (RL-20)
- Rural Lands (RL-40)
- Rural Lands (RL-80)
- Specific Plan Area⁴
- Office Professional³
- Neighborhood Commercial³
- General Commercial³
- Rural Commercial³
- Limited Impact Industrial³
- Medium Impact Industrial³
- High Impact Industrial³
- Village Core Mixed Use
- Public/Semi-Public Facilities³
- Public/Semi-Public Lands (Solid Waste Facility)
- Public Agency Lands
- Tribal Lands
- Open Space (Recreation)
- Open Space (Conservation)
- County Water Authority Boundary
- Planning Area Boundary



- NOTES:**
- 1: The type and intensity of development depicted on the map must be implemented in accordance with General Plan goals and policies and other County regulations which may further affect the type and intensity of use.
 - 2: Land Use Element, Table LU-1 indicates the applicable Regional Category for each designation.
 - 3: Maximum development intensity for non-residential designations is provided in Land Use Element, Table LU-1.
 - 4: Refer to Community Plan for general land uses and intensities allowed in Specific Plan area (SPA).

Map Prepared By:
LUEG GIS
Land Use & Environmental Group - Geographics & Remote Sensing

Coordinates: NAD83 Feet
THIS MAP/DATA IS PROVIDED WITHOUT WARRANTY OF ANY KIND, EITHER EXPRESS OR IMPLIED, INCLUDING BUT NOT LIMITED TO, THE IMPLIED WARRANTIES OF MERCHANTABILITY AND FITNESS FOR A PARTICULAR PURPOSE. Note: This product may contain information reproduced with permission from the National Aeronautics and Space Administration (NASA). Regional Information System which cannot be reproduced without the written permission of SANDAG. This product may contain information reproduced with permission from the National Aeronautics and Space Administration (NASA). This map is copyrighted by Rand McNally & Company. It is intended to copy or reproduce all or any part thereof, whether for personal use or resale, without the prior, written permission of Rand McNally & Company.
Copyright SandGIS 2014 - All Rights Reserved. Full text of this legal notice can be found at: http://www.sandgis.org/Legal_Notice.htm



Source: County of San Diego, SandGIS, SANDAG
Document Path: S:\land_use\lgupdate_map\official_map\mof\new_general_plan_atlas.mxd

20
ACRES

0 850 1,700 3,400
Feet

Map Date: 1/8/2017