

**LEGEND**

**Road Network**

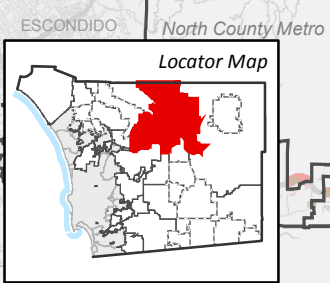
- Expressway / Freeway
- Prime Arterial
- Major Roads Series
- Boulevard Series
- Community Collector Series
- Light Collector Series
- Minor Collector Series
- Local Public Roads

**Bicycle Network**

- Bike Path - Class I
- Bike Lane - Class II
- Bike Way - Class IV

**Other**

- Regional Trail
- Public Airport



# NORTH MOUNTAIN MOBILITY ELEMENT NETWORK

Map Date: 8/10/2018  
P:\20170207\_ME\_bike\mxd\mobility\_element\mobility\_northmntn.mxd



MOBILITY ELEMENT NETWORK APPENDIX

Mobility Element Network—North Mountain Subregion Matrix			
ID <sup>a</sup>	Road Segment	Designation/Improvement #.#X = [# of lanes].[roadway classification][improvement]	Special Circumstances
1	South Grade Road (SF 1417) <u>Segment:</u> Pala/Pauma Subregion boundary to Canfield Road	2.3C Minor Collector	None
2	East Grade Road / S7 (SC 320) <u>Segment:</u> Canfield Road to SR-76	2.3C Minor Collector	None
3	State Route 76 <u>Segment:</u> Pala/Pauma Subregion boundary to SR-79	2.1D Community Collector Improvement Options [Unspecified]	None
4	Mesa Grande Road (SC 390 / SC 400) <u>Segment:</u> SR-76 to SR-79	2.3C Minor Collector	None
5	Chihuahua Valley Road (SA 150) <u>Segment:</u> SR-79 to Riverside County line	2.2E Light Collector	None
6	State Route 79 <u>Segment:</u> Riverside County line to Julian Road / SR-78	2.1D Community Collector Improvement Options [Unspecified]	None
7	State Route 78 / Julian Road <u>Segment:</u> Ramona CPA boundary to Julian CPA boundary	2.1D Community Collector Improvement Options [Unspecified]	None
8	State Route 78 <u>Segment:</u> Julian CPA boundary to Desert Subregion boundary	2.2D Light Collector Improvement Options [Unspecified]	None
9	San Felipe Road / S2 (SF 1405) <u>Segment:</u> SR-79 to SR-78	2.2E Light Collector	None
10	Montezuma Valley Road / S22 (SF 1406) <u>Segment:</u> San Felipe Road to Desert Subregion boundary	2.2D Light Collector Improvement Options [Unspecified]	None
11	Great Overland Stage Route (SA 200) <u>Segment:</u> SR-78 to Desert Subregion boundary	2.2E Light Collector	None

a. ID = Roadway segment on Figure M-A-13