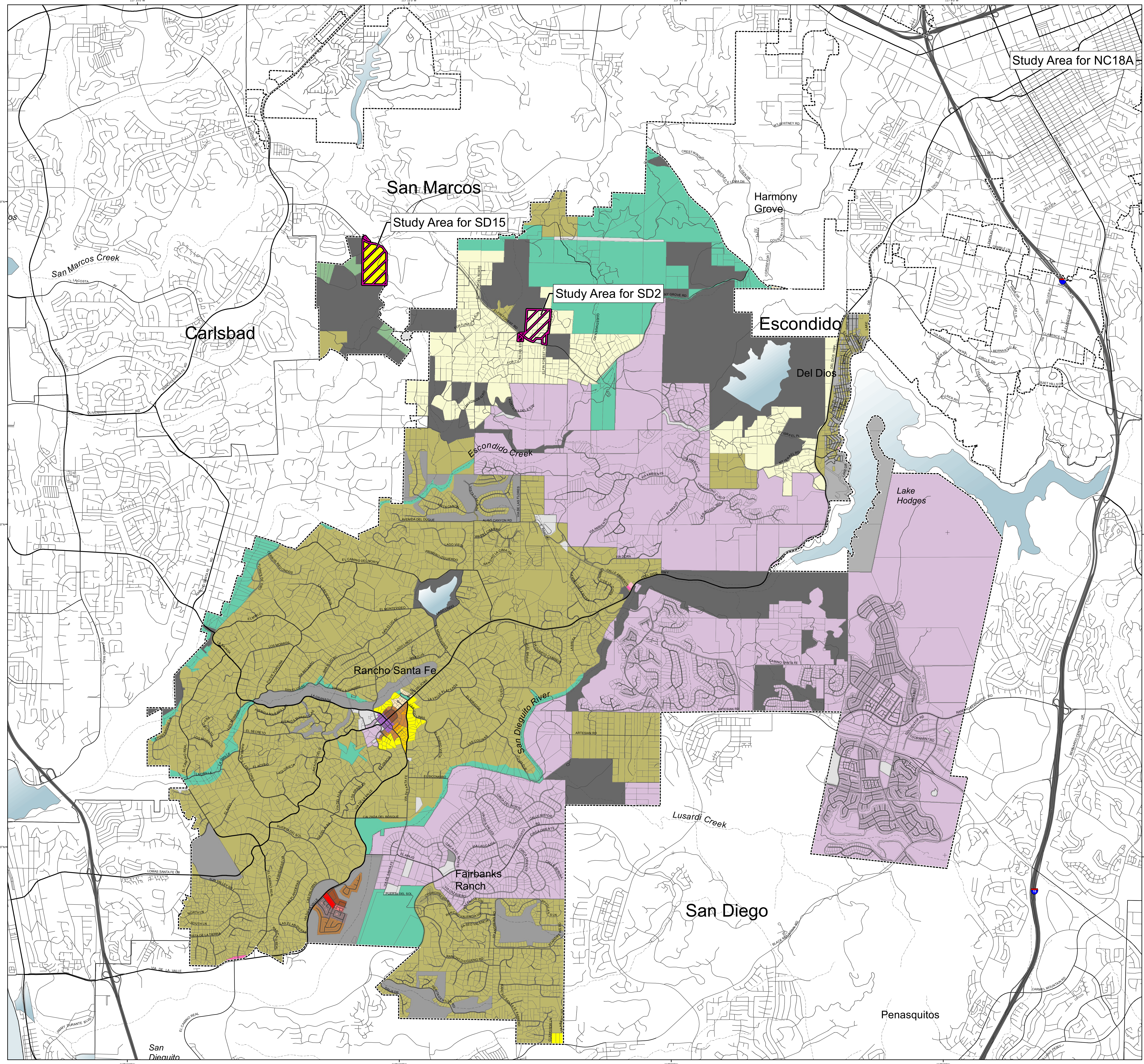


Property Specific Requests

Land Use Designations

- Village Residential (VR-30), 30 du/ac
- Village Residential (VR-24), 24 du/ac
- Village Residential (VR-20), 20 du/ac
- Village Residential (VR-15), 15 du/ac
- Village Residential (VR-10.9), 10.9 du/ac
- Village Residential (VR-7.3), 7.3 du/ac
- Village Residential (VR-4.3), 4.3 du/ac
- Village Residential (VR-2.9), 2.9 du/ac
- Village Residential (VR-2), 2 du/ac
- Semi-Rural Residential (SR-0.5), 1 du/0.5 ac
- Semi-Rural Residential (SR-1), 1 du/1,2,4 ac
- Semi-Rural Residential (SR-2), 1 du/2,4,8 ac
- Semi-Rural Residential (SR-4), 1 du/4,8,16 ac
- Semi-Rural Residential (SR-10), 1 du/10,20 ac
- Rural Lands (RL-20), 1 du/20 ac
- Rural Lands (RL-40), 1 du/40 ac
- Rural Lands (RL-80), 1 du/80 ac
- Specific Plan Area (residential densities in italics)
- Office Professional
- Neighborhood Commercial
- General Commercial
- Rural Commercial
- Limited Impact Industrial
- Medium Impact Industrial
- High Impact Industrial
- Village Core Mixed Use
- Public/Semi-Public Facilities
- Public/Semi-Public Lands - Solid Waste Facility
- Public Agency Lands
- Tribal Lands
- Open Space (Recreation)
- Open Space (Conservation)
- Forest Conservation Initiative Overlay
- Study Area



Map Prepared By:
LU EGGIS
Geographic Information Systems
Land Use & Planning Services

THIS MAP IS PROVIDED WITHOUT WARRANTY OF ANY KIND, EITHER EXPRESSED OR IMPLIED, INCLUDING BUT NOT LIMITED TO THE IMPLIED WARRANTIES OF MERCHANTABILITY AND FITNESS FOR A PARTICULAR PURPOSE.
Copyright © 2009, All Rights Reserved.
This product may contain information from SANDAG Regional Information Systems which cannot be reproduced without the written permission of SANDAG. This product may contain information which has been reproduced with permission granted by Thomas Brothers Maps.
Copyright © 2009. All Rights Reserved. Full text of this legal notice can be found at <http://www.lueggis.com>.

This is a draft map and should be destroyed upon submission of subsequent versions.

Source: County of San Diego, SanGIS, SANDAG
File reference: S:\land_use\gispupdate_maps\lucmap\alternatives\shatt_map\main\lucmap\study_area.mxd

