

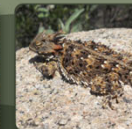
# **North County Multiple Species Conservation Plan (North County Plan)**

## **Public Workshop**

**October 24 & November 1, 2023**

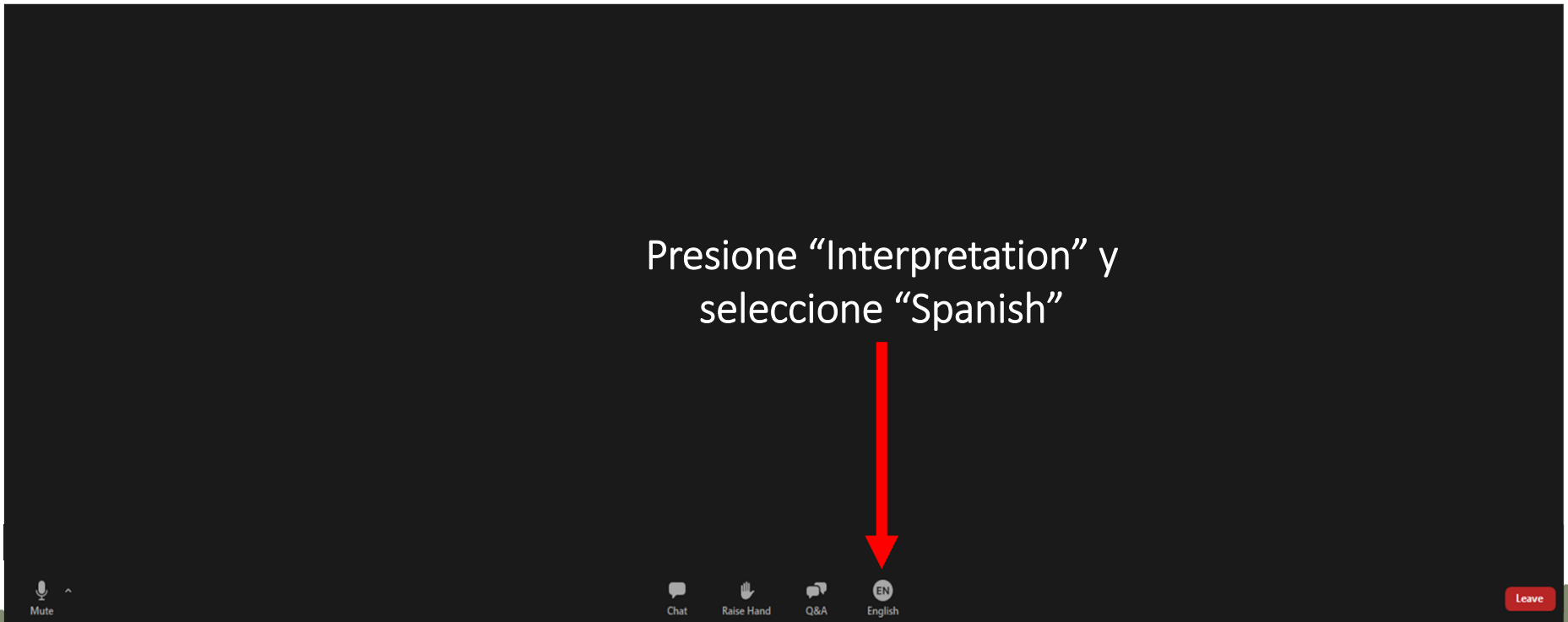


**North County Plan**



# Traducción simultánea en español

Si necesita traducción simultánea:



North County Plan



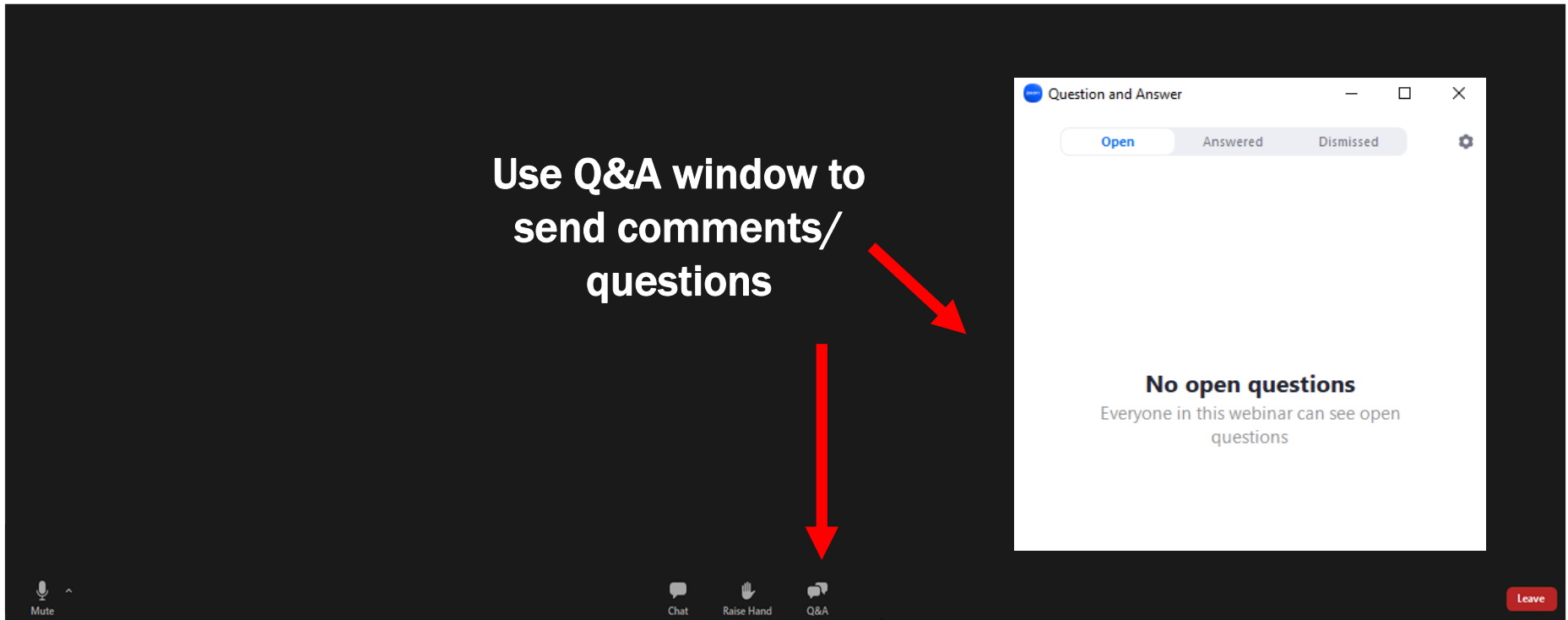
# Agenda

- Workshop Logistics
- Project Overview
- Effects Analysis
  - Future Development
  - Clearing Exemptions
  - Projects on Other Public Lands
  - NCCP Contribution
- Q&A



# Zoom Meeting Controls – Desktop

Use Q&A window to send comments/questions



The image shows a Zoom meeting interface on a desktop. At the bottom, there is a toolbar with icons for Mute, Chat, Raise Hand, and Q&A. A red arrow points from the text 'Use Q&A window to send comments/questions' to the Q&A icon. Another red arrow points from the text to the 'Question and Answer' window that is open. The window has tabs for 'Open', 'Answered', and 'Dismissed'. The 'Open' tab is selected. The window displays the text: 'No open questions' and 'Everyone in this webinar can see open questions'. A 'Leave' button is visible in the bottom right corner of the window.



# How to Participate



Submit Comments/Questions  
During the Meeting

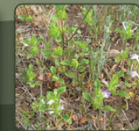


Raise Hand at End of Meeting  
for Verbal Comments

**Use the Q&A feature at the  
bottom of your screen**



North County Plan



# Interactive Feedback

## Poll Everywhere



Zoom Comments/Questions? Send message using Chat feature



### To Participate:

▶ Scan QR Code

### OR:

▶ Open [pollev.com/SDCoSustainable681](https://pollev.com/SDCoSustainable681) in your browser (Chrome, Firefox, or Edge)

▶ Enter your name or click Skip

▶ Wait to be re-directed to the event



North County Plan



Join by Web [PollEv.com/sdcosustainable681](https://PollEv.com/sdcosustainable681)



**What brought you here today? Please explain your interest in the Multiple Species Conservation Plan.**

---

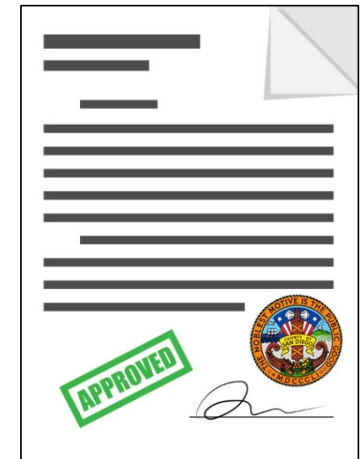
# Federal and California Endangered Species Acts



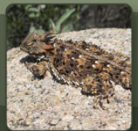
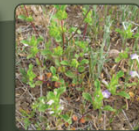
Habitat Conservation Plan (HCP)

Natural Community Conservation Plan (NCCP)

Incidental Take Permit



North County Plan





# Engage San Diego County

The screenshot shows the San Diego County website for the North County Plan. The header includes the San Diego County logo and navigation links for Home, About This Site, All Projects, and a search bar. The main banner features the County of San Diego logo and the title "North County Plan" in a large, serif font. Below the banner, there are three small images: a bird, a plant, and a lizard. The main content area is titled "North County Multiple Species Conservation Plan" and includes social media icons, a large landscape photo, and a text block describing the plan. A "Who's Listening" section lists Stephanie Neal and Bethany Principe with their roles and contact information.

SanDiegoCounty.gov Home About This Site All Projects Q Search

COUNTY OF SAN DIEGO **North County Plan**

Home / North County Multiple Species Conservation Plan

## North County Multiple Species Conservation Plan

f t in e



The County is developing a Multiple Species Conservation Plan for the northwestern area of the unincorporated county. Known as the North County Plan, the Plan will help preserve the area's rich biodiversity. All this while expanding recreation and streamlining development in less sensitive areas.

**Overview**

The Multiple Species Conservation Program (MSCP) is a preservation framework. It outlines how we can protect and connect the most valuable biological habitats in San Diego County.

There are three regional plans: [South](#), [North](#), and [East](#).

Each plan focuses on the unique threatened plant and animal species for

**Who's Listening**

**Stephanie Neal**  
Project Lead  
Planning & Development Services  
Email [MSCP@sdcounty.ca.gov](mailto:MSCP@sdcounty.ca.gov)

**Bethany Principe**  
MSCP Program Coordinator  
Parks & Recreation  
Email [MSCP@sdcounty.ca.gov](mailto:MSCP@sdcounty.ca.gov)

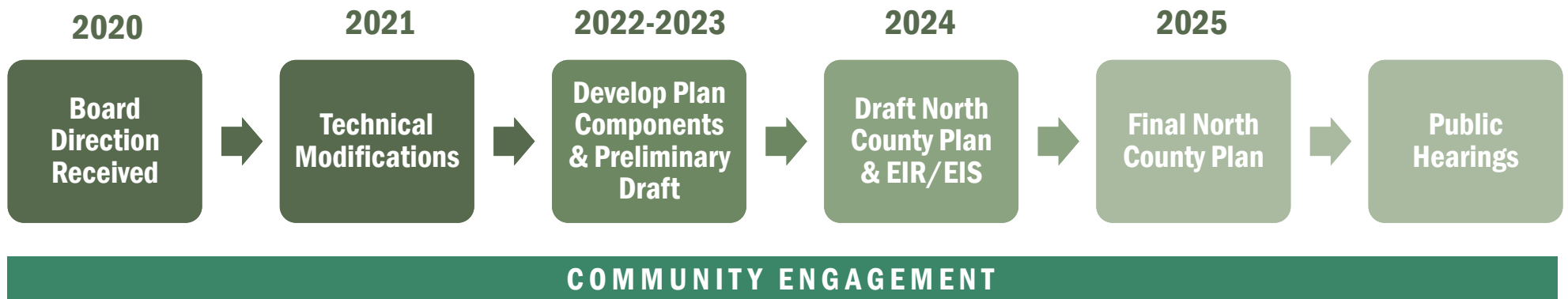
[engage.sandiegocounty.gov/northcountyplan](https://engage.sandiegocounty.gov/northcountyplan)



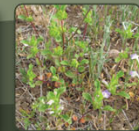
# North County Plan



# North County Plan Timeline



## North County Plan

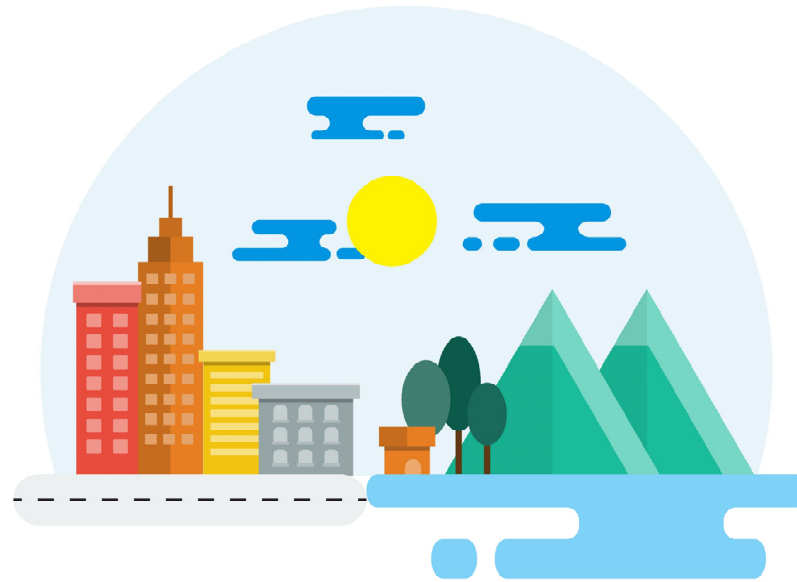


# Plan Components

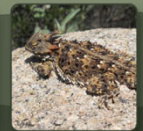
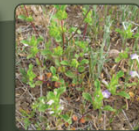


# Effects Analysis

Forecast impacts to vegetation and Covered Species habitat from Covered Activities to estimate "take" needed



Natural habitat is preserved within the Priority Conservation Area to replace or "mitigate" the impacts to vegetation in rough-step



# Effects Analysis

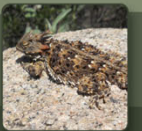


## North County Plan

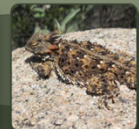
Chapter 4: Effects  
Analysis

## Implementation Documents

Biological Mitigation  
Ordinance (BMO)



# How do we forecast habitat impacts and future mitigation/conservation?



# What is the Permit Term?

- Amount of time the County can issue permits for Take of Covered Species due to impacts from Covered Activities
- North County Plan is anticipated to have a 30-year Permit Term
  - Forecast amount of future habitat impacts and mitigation expected to occur within this timeframe only
  - Guidance on permit extension process will be included in the Plan

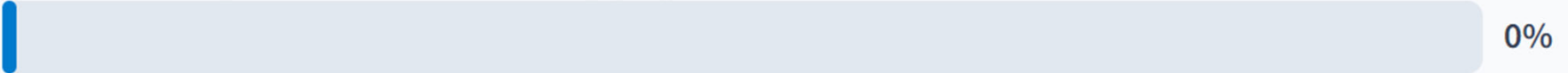


When poll is active respond at [PollEv.com/sdcosustainable681](https://PollEv.com/sdcosustainable681)

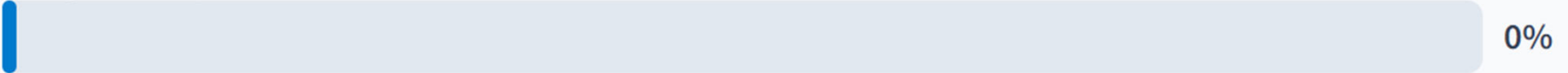


## Which category of development is *most* important to you?

Future development (3+ units & County projects)



Single-family homes



Agricultural clearing



Projects on other public lands





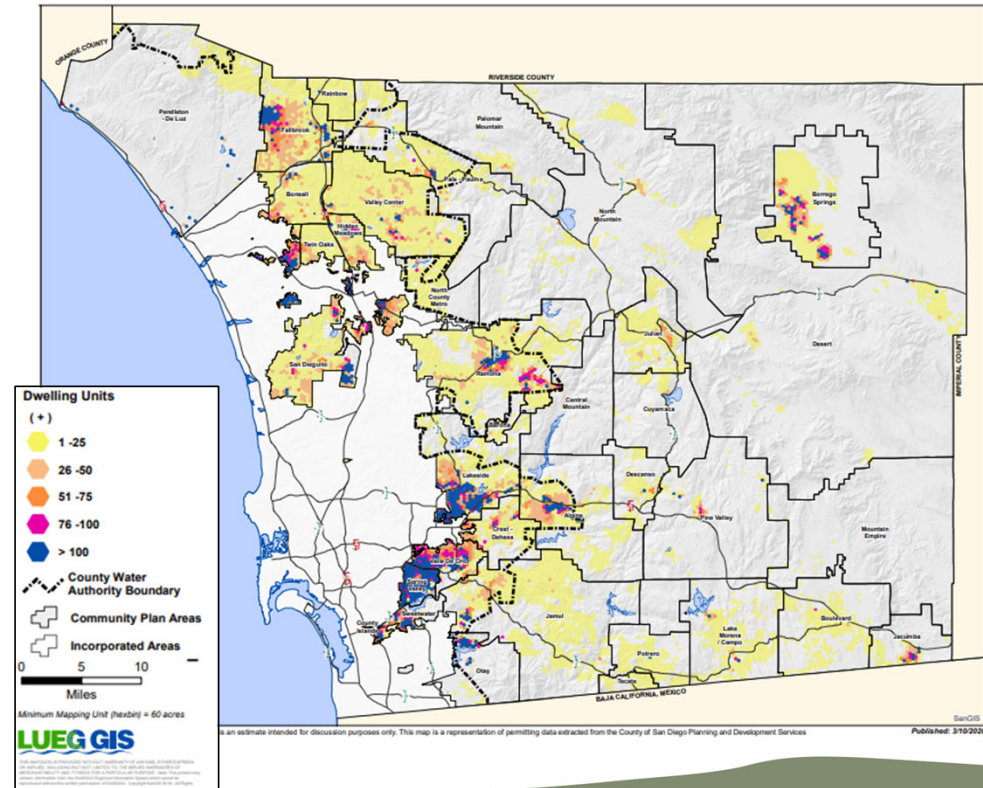
# Future Development



# General Plan

- San Diego County General Plan applies to the unincorporated area of the county and is the County's long-term blueprint for the vision of the future
- Land Use Element is a framework that guides how lands are to be conserved and developed in the unincorporated County

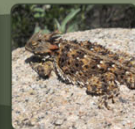
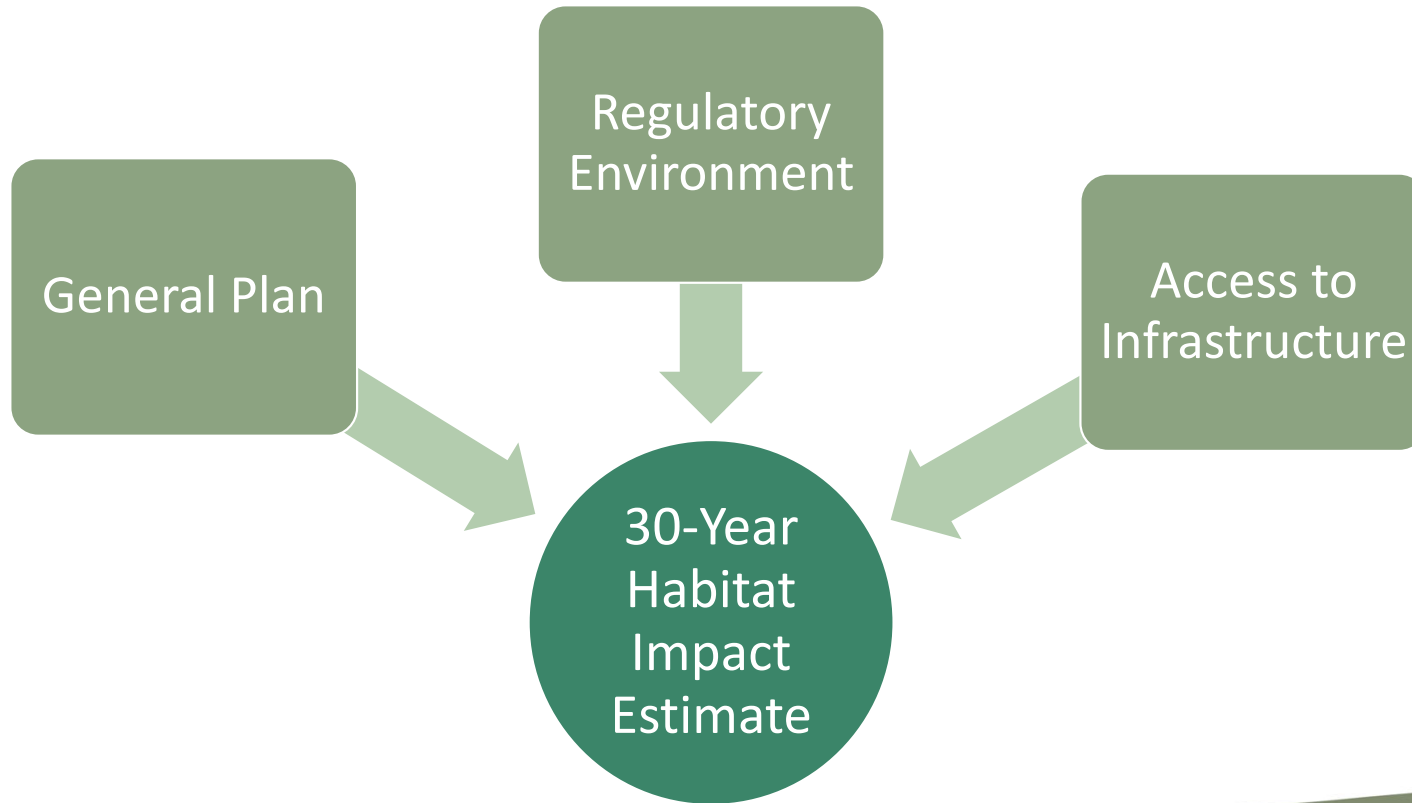
Housing Production & Capacity Portal



## North County Plan



# Future Development



# Legislation Affecting Housing Forecasts



**Reduce greenhouse  
gas emissions**



**Encourage infill  
development**



**Improve public health  
through active  
transportation**

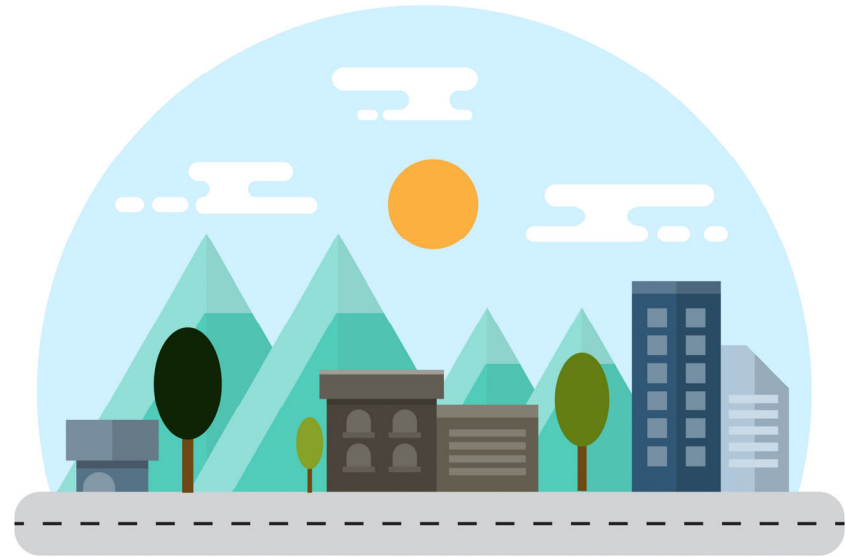


**North County Plan**



# Access to Infrastructure

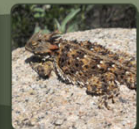
Access to essential services such as water, sewer, fire, and school districts can affect where new development is likely to occur






# Future Development

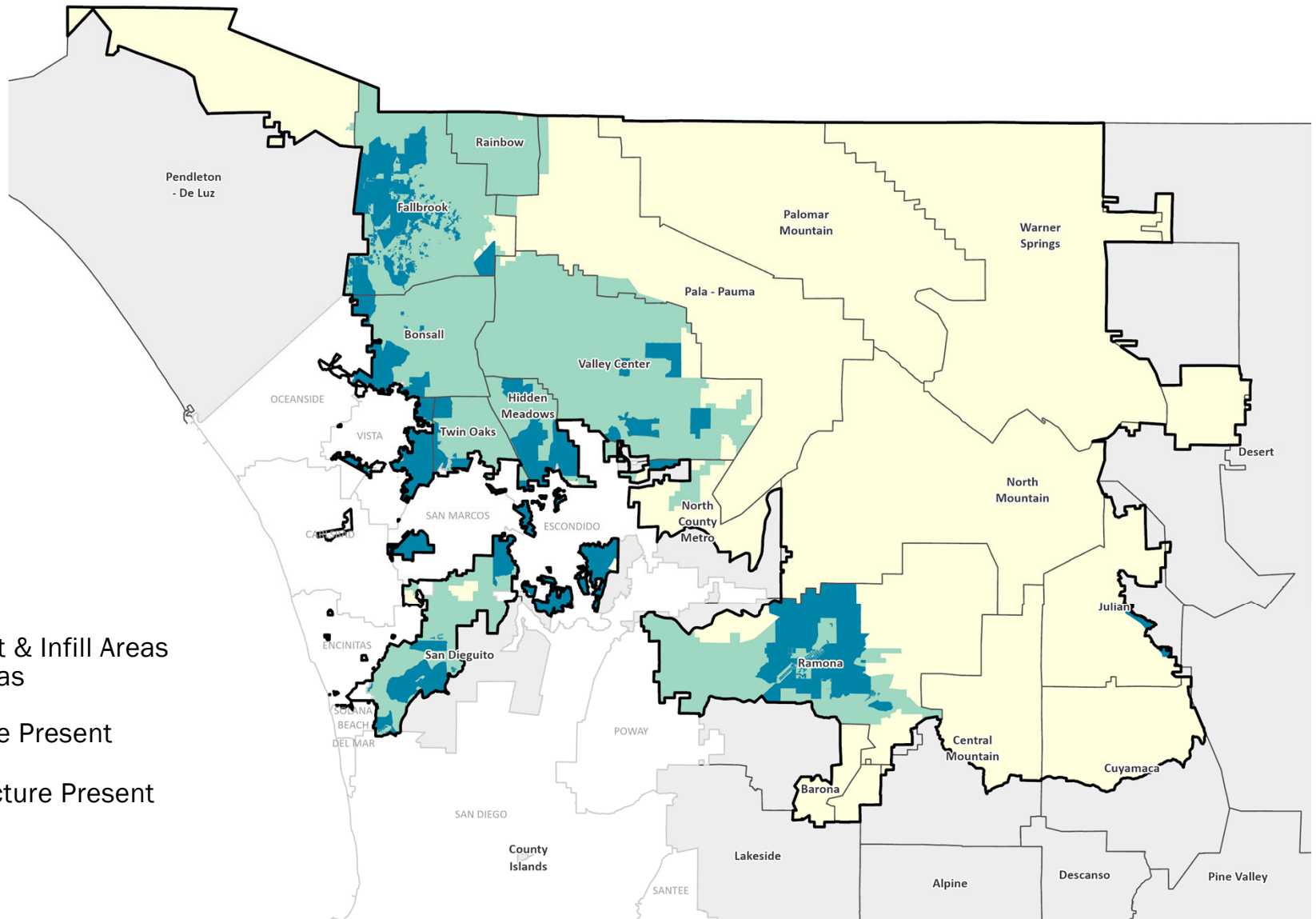
- To forecast habitat impacts under the North County Plan, the County considered:
  - VMT efficient areas
  - SB 9/35 applicability
  - Infrastructure presence (school, water, fire, sanitation)
- Percentages estimating the amount of General Plan capacity that will be built during the 30-year Permit Term were applied to each area to adjust the forecasted habitat impacts

<b>VMT Board Option</b> Most Likely to Develop (100%)*	<b>SB 9/35</b> More Likely to Develop (100%)*	<b>Infrastructure Present</b> Likely to Develop (85%)*	<b>No Infrastructure Present</b> Unlikely to Develop (50%)*
<ul style="list-style-type: none"> <li>VMT &amp; Infill Areas (as directed by the Board)</li> </ul>	<ul style="list-style-type: none"> <li>Criteria met for County adopted policies to comply with SB 9/35</li> </ul>	<ul style="list-style-type: none"> <li>Criteria met for:               <ul style="list-style-type: none"> <li>Water</li> <li>Sanitation</li> <li>Fire</li> <li>School</li> </ul> </li> </ul>	<ul style="list-style-type: none"> <li>Criteria <u>not</u> met for:               <ul style="list-style-type: none"> <li>Water</li> <li>Sanitation</li> <li>Fire</li> <li>School</li> </ul> </li> </ul>

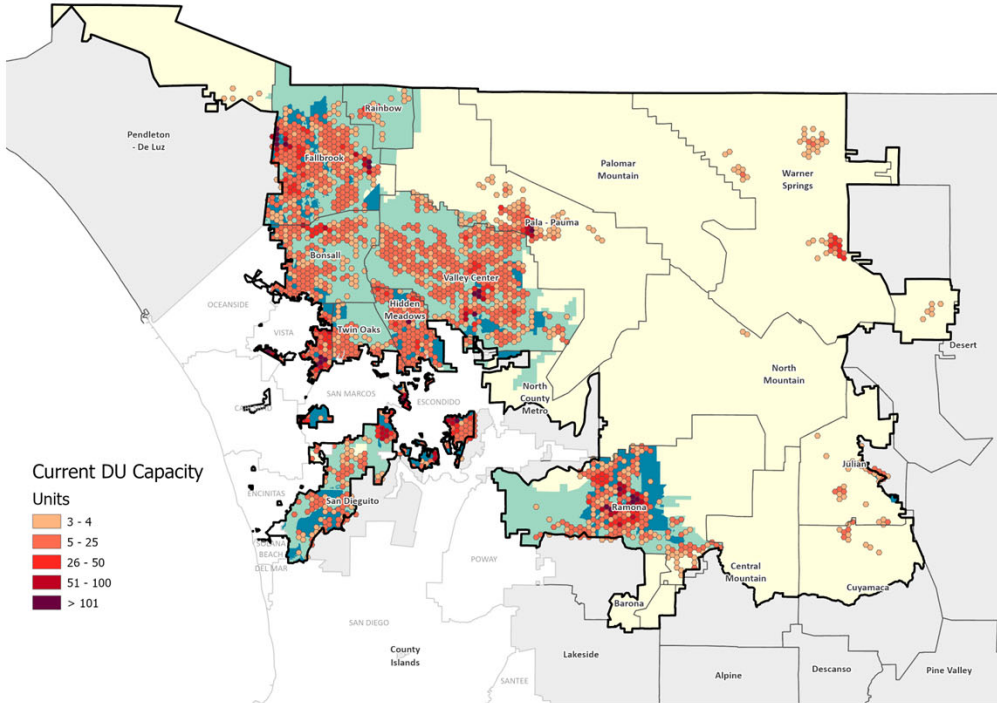


# Legend

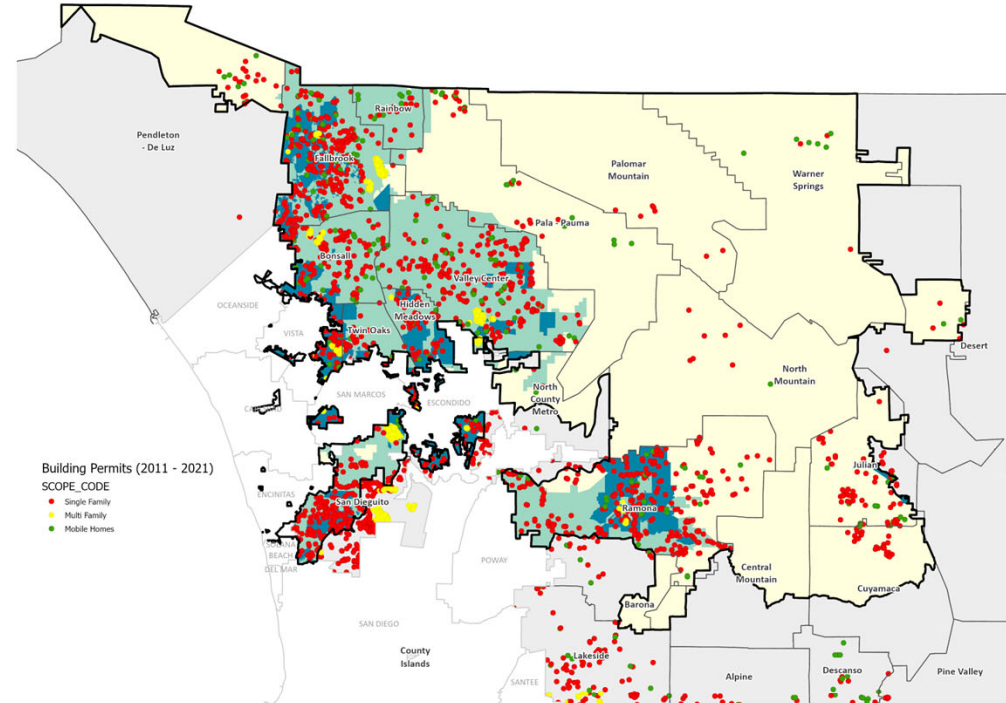
-  VMT Efficient & Infill Areas SB 9/35 Areas
-  Infrastructure Present
-  No Infrastructure Present



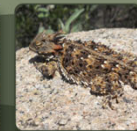
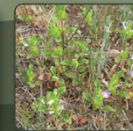
## General Plan Dwelling Unit Capacity



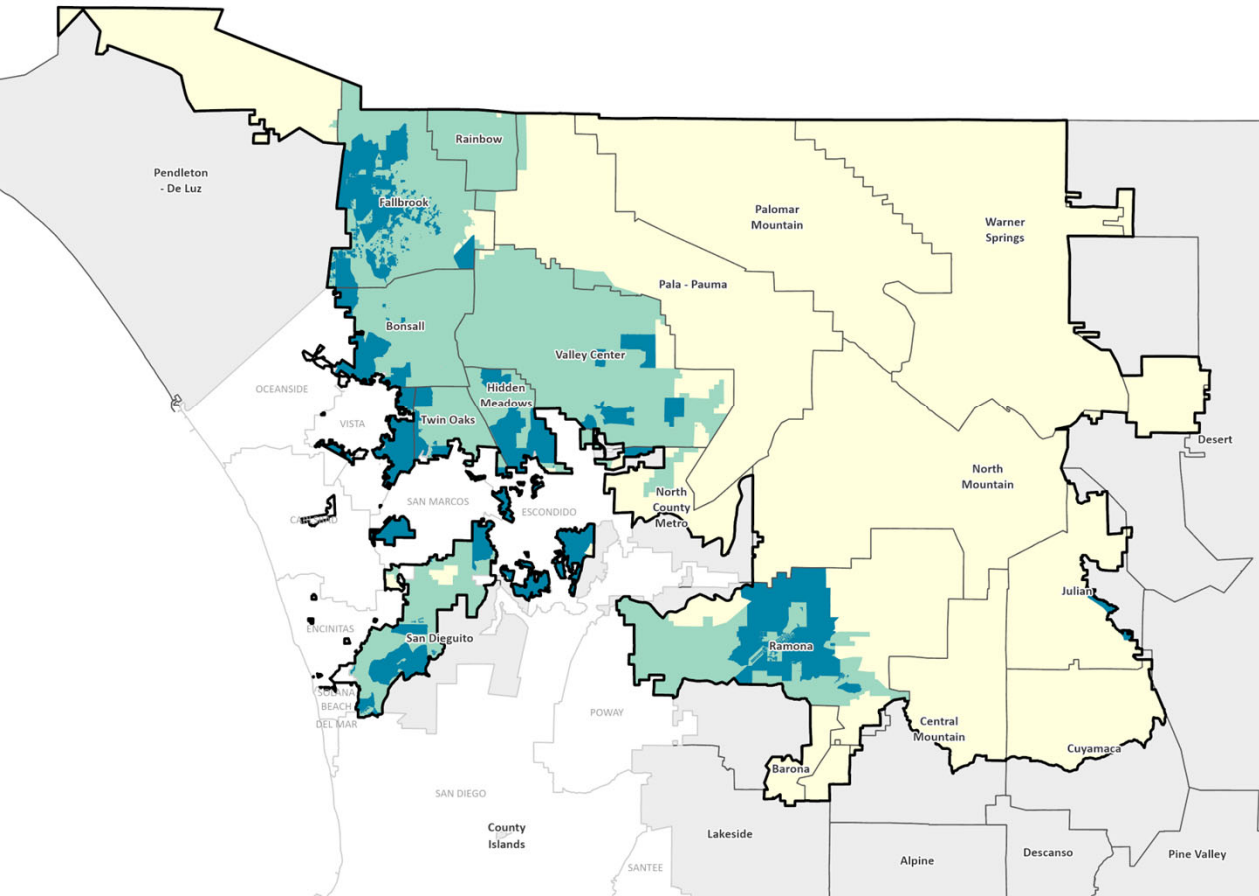
## 10-Year Permit History



# North County Plan



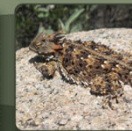
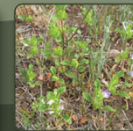




Future Development	
Forecasted Habitat Impacts	9,992
Anticipated Mitigation	17,378



# North County Plan



Join by Web [PollEv.com/sdcosustainable681](https://PollEv.com/sdcosustainable681)



**Are there any other factors the County should consider that may indicate where private development is likely to occur?**

---

# Single-Family Home Exemption



# Single Family Home Exemptions



Outside the PCA, up to five (5) acres of clearing or grading of natural vegetation for single-family homes is exempt\* from the BMO



Within the PCA, up to two (2) acres of clearing or grading of natural vegetation for single-family homes is exempt\* from the BMO



Limited to parcels ten (10) acres and under in size, which are zoned for single-family residential

\*County assumes responsibility to mitigate for impacts

Any clearing or grading of natural vegetation exceeding these allowances including clearing required for fire protection, shall be subject to the mitigation requirements of this Plan and the North County BMO (i.e., not exempt)



# Single Family Home Exemptions

- Applied percentages estimating likelihood of development to forecast impacts that under the single-family home exemption

Category	Forecasted Impacts	Anticipated Mitigation
Future Development	9,992	17,378
<b>Single Family Home Exemptions</b>	<b>5,091</b>	<b>6,760</b>
<b>SUBTOTAL</b>	<b>15,083</b>	<b>24,138</b>

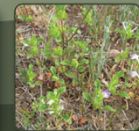


# Agricultural Clearing Exemption



# Agricultural Clearing Exemptions

- For new agriculture, must establish an agricultural operation within one year and to retain the land in agriculture for at least ten years
- For expanded agriculture, land has been farmed during three of the last five years and intends to retain his or her land in agriculture for the next five years



# Agricultural Clearing Exemptions



Clearing or grading of natural vegetation for agricultural purposes is exempt\* from the BMO for up to 6,000 acres total in the Plan Area (1,000 acres within PCA)

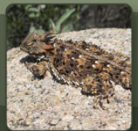
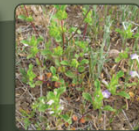


Wildlife best management practices would be required for clearing within the PCA



Limit clearing allowance for a single-property owner, aggregated over multiple clearing permits

**\*County assumes responsibility to mitigate for impacts**

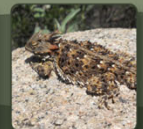




# Agricultural Clearing Exemptions

- 6,000 acres of new and expanded agriculture was applied to areas of natural habitat outside of the General Plan and single-family home impacted areas to estimate mitigation anticipated

Category	Forecasted Impacts	Anticipated Mitigation
Future Development	9,992	17,378
Single Family Home Exemptions	5,091	6,760
<b>Agricultural Clearing Exemptions</b>	<b>6,000</b>	<b>7,256</b>
<b>SUBTOTAL</b>	<b>21,083</b>	<b>31,394</b>



Join by Web [PollEv.com/sdcosustainable681](https://PollEv.com/sdcosustainable681)



Does the total 6,000 acres of mitigation exemptions for new and expanded agriculture meet the needs of the community?

Yes



No



Join by Web [PollEv.com/sdcosustainable681](https://PollEv.com/sdcosustainable681)



If you answered no, how could we better meet the needs of the community?

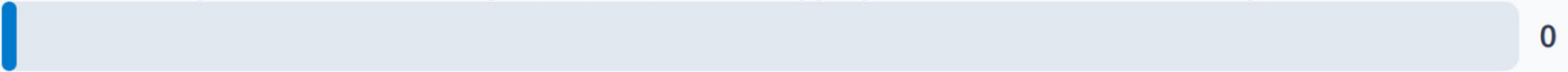


## Of the following proposals, which do you think the County should include in the North County Plan? (Select all that apply)

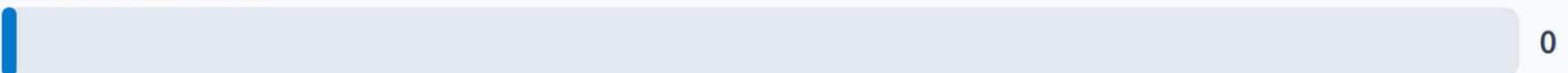
Require wildlife best management practices for properties utilizing agricultural clearing exemptions within the Priority Conservation Area



Limit clearing allowance for a single-property owner, aggregated over multiple clearing permits



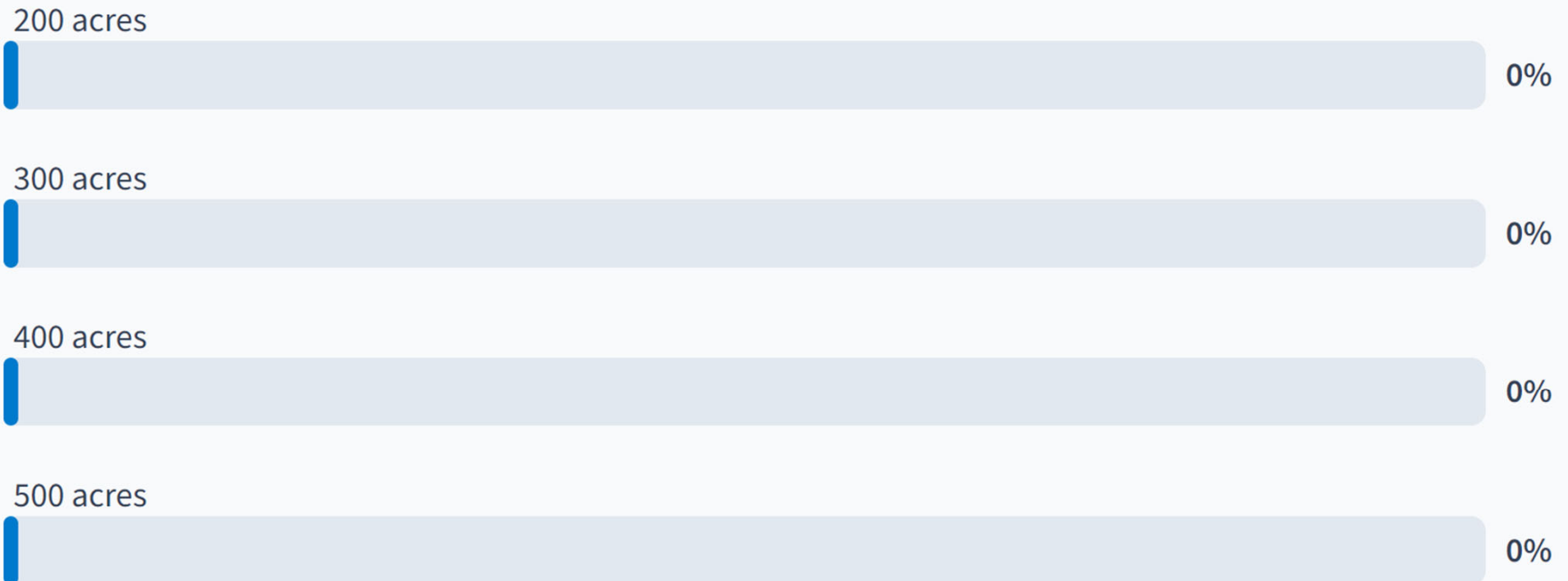
None of the above



Join by Web [PollEv.com/sdcosustainable681](https://PollEv.com/sdcosustainable681)



If the County were to limit the clearing allowance for a single-property owner, which acreage allowance do you think is most appropriate?



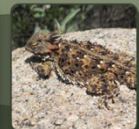
# Projects on Other Public Lands



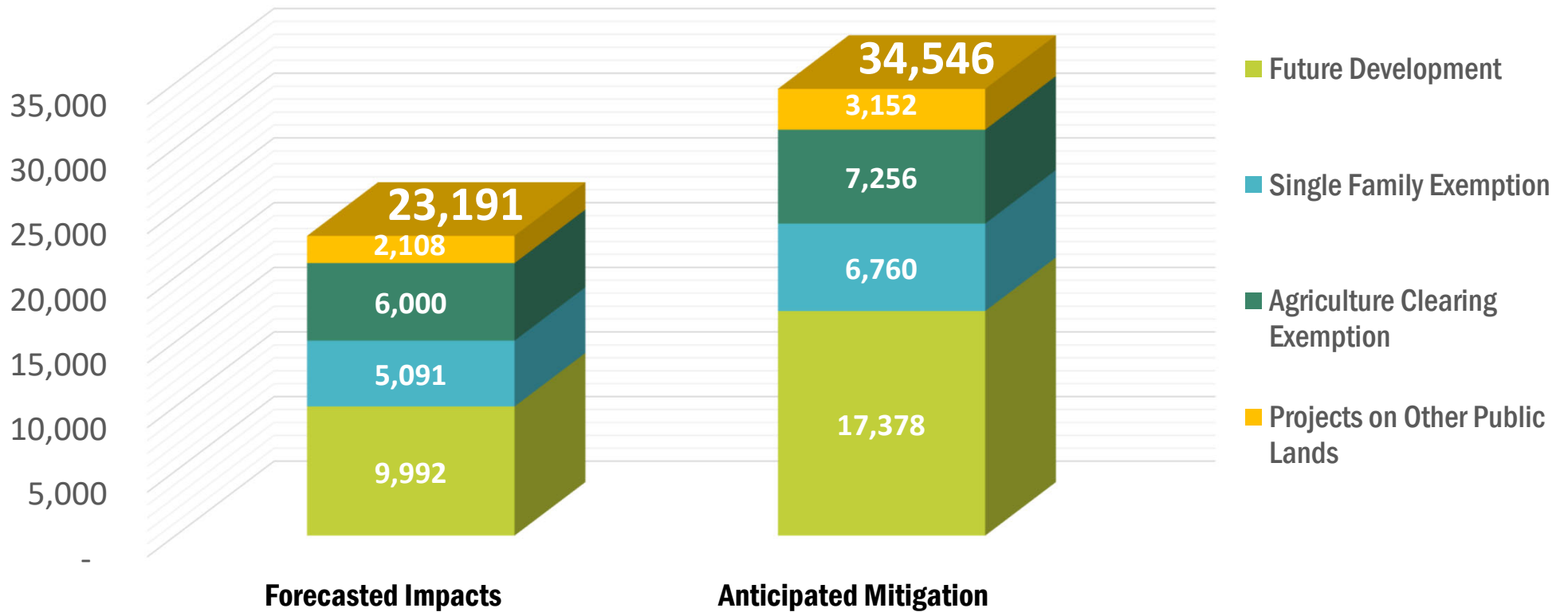
# Projects on Other Public Lands

- Lands not be subject to County regulatory authority may voluntarily seek such take coverage from the County through a Certificate of Inclusion
- Effects Analysis includes 10% of maximum allowable impacts will be included for projects on these other public lands

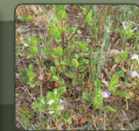
Category	Forecasted Impacts	Anticipated Mitigation
Future Development	9,992	17,378
Single Family Home Exemptions	5,091	6,760
Agricultural Clearing Exemptions	6,000	7,256
<b>Projects on Other Public Lands (10%)</b>	<b>2,108</b>	<b>3,152</b>
<b>SUBTOTAL</b>	<b>23,191</b>	<b>34,546</b>



# North County Plan Impacts and Mitigation

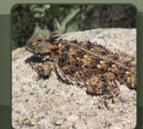


North County Plan





# NCCP Contribution



# NCCP Contribution

“Above and Beyond”

In addition to the mitigation requirements required in a Habitat Conservation Plan (HCP), the Natural Communities Conservation Planning (NCCP) Act requires that conservation of Covered Species must contribute to the recovery of those species

Category	Forecasted Impacts	Anticipated Mitigation
Future Development	9,992	17,378
Single Family Home Exemptions	5,091	6,760
Agricultural Clearing Exemptions	6,000	7,256
Projects on Other Public Lands (10%)	2,108	3,152
<b>Future NCCP Contribution (5%)</b>	-	<b>1,727</b>
<b>SUBTOTAL</b>	<b>23,191</b>	<b>36,273</b>



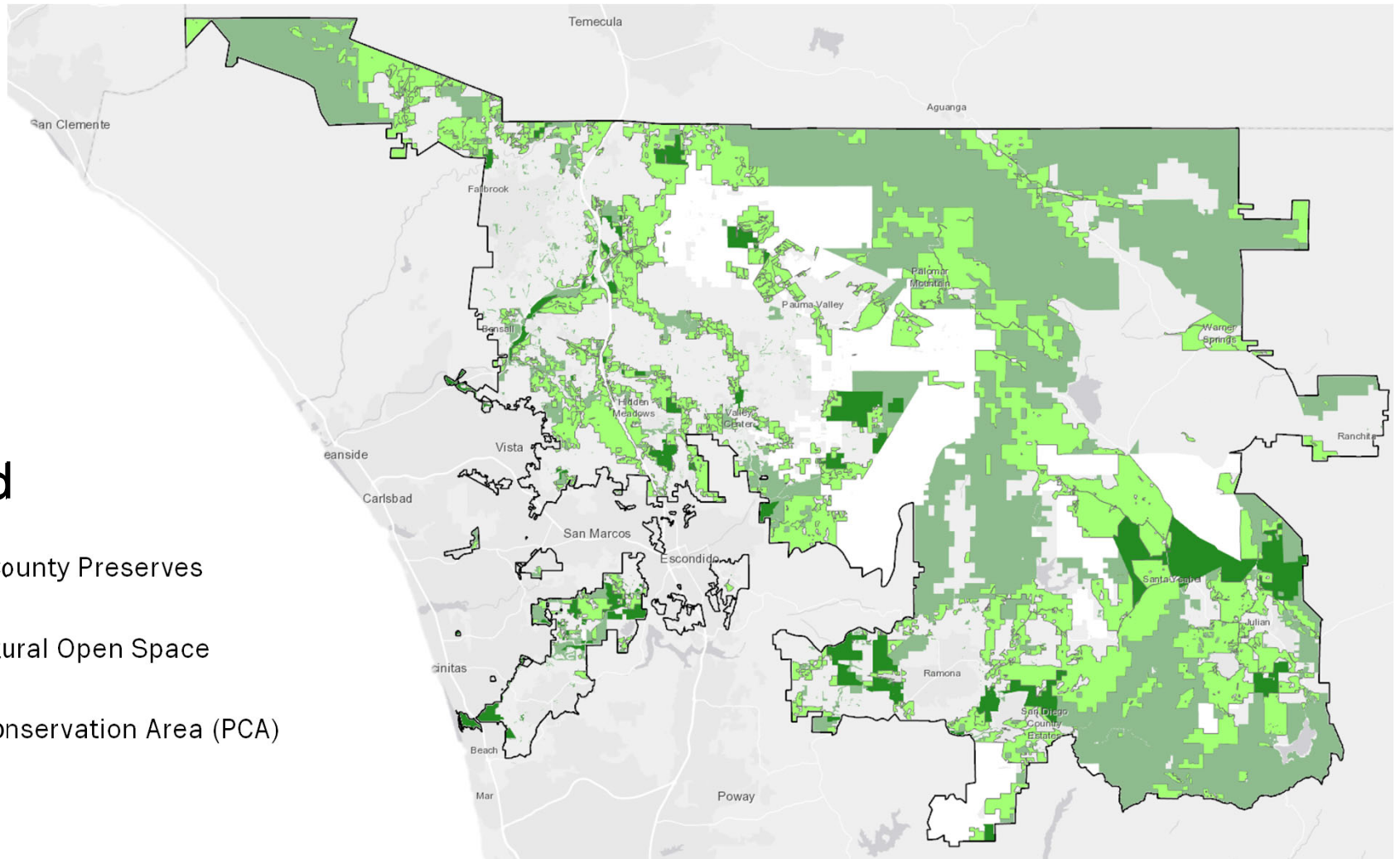
## North County Plan



# North County Open Space Network

## Legend

- Existing County Preserves
- Other Natural Open Space
- Priority Conservation Area (PCA)



# What comes next?

- We are hosting upcoming public workshops on the Conservation Strategy
  - Overview of the Conservation Strategy components, structure, and approach
  - Following the workshops, draft text will be provided on our website/Engage San Diego County page for 60-day review period

## Stakeholder Working Group

**Wednesday, November 15**  
**2 PM – 3 PM**

## Public Workshops

**Thursday, November 16**  
**6 PM – 7 PM**



# Public Comment



**WE WANT TO HEAR  
FROM YOU!**



**PLEASE SHARE  
ADDITIONAL COMMENTS.**



**ASK ANY QUESTIONS.**

Check out our project website: [bit.ly/NorthCountyMSCP](https://bit.ly/NorthCountyMSCP)  
Email us at: [MSCP@sdcounty.ca.gov](mailto:MSCP@sdcounty.ca.gov)



## North County Plan



# Thank you for participating!



Project Contact: Stephanie Neal  
(858) 505-6677  
[MSCP@sdcounty.ca.gov](mailto:MSCP@sdcounty.ca.gov)



Project website:  
[www.sandiegocounty.gov/pds/mscp](http://www.sandiegocounty.gov/pds/mscp)



## North County Plan

