

North County Multiple Species Conservation Plan (North County Plan)

Stakeholder Working Group Meeting

October 20, 2023

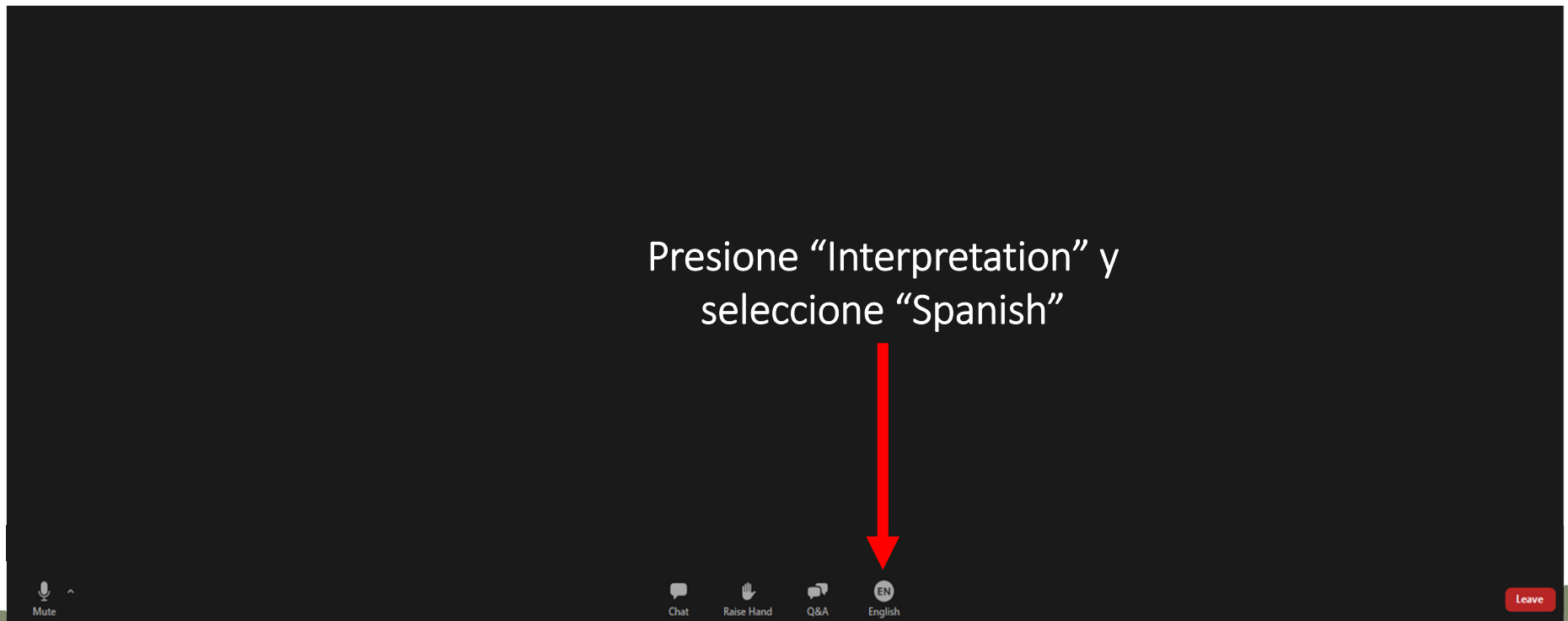


North County Plan



Traducción simultánea en español

Si necesita traducción simultánea:



North County Plan



Agenda

- Workshop Logistics
- Public Communication
- Project Overview
- Effects Analysis
 - Future Development
 - Clearing Exemptions
 - Projects on Other Public Lands
 - NCCP Contribution
- Chat Q&A (as time permits)



How to Participate



Submit Comments/Questions
During the Meeting



Having Issues With Zoom
During The Meeting?

**Use the Q&A feature at the
bottom of your screen**

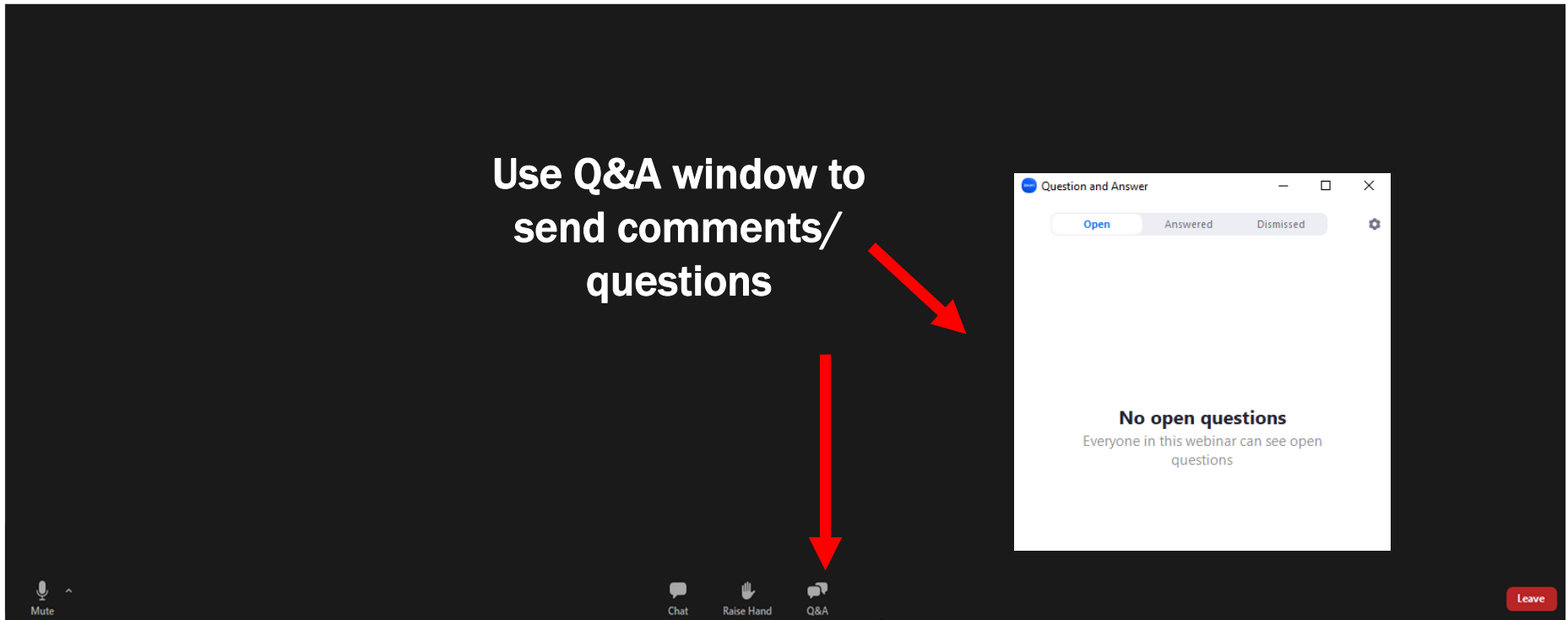


North County Plan

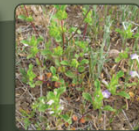


Zoom Meeting Controls – Desktop

Use Q&A window to send comments/questions



The image shows a Zoom meeting interface on a desktop. At the bottom, there is a toolbar with icons for Mute, Chat, Raise Hand, and Q&A. A red arrow points from the text 'Use Q&A window to send comments/questions' to the Q&A icon in the toolbar. Another red arrow points from the same text to a 'Question and Answer' window that is open. The window has tabs for 'Open', 'Answered', and 'Dismissed'. The 'Open' tab is selected. The window displays the text: 'No open questions' and 'Everyone in this webinar can see open questions'. A 'Leave' button is visible in the bottom right corner of the window.



Public Communication



North County Plan



Upcoming Public Workshops

- We are hosting upcoming public workshops on the Effects Analysis, which will include an overview of the forecasted habitat impacts over the 30-year Permit Term
 - Seeking feedback on the acreage allowances for the agricultural clearing and single-family home exemptions

Public Workshops

**Tuesday, October 24 &
Wednesday, November 1
6 PM – 8 PM**



North County Plan



Project Overview



North County Plan



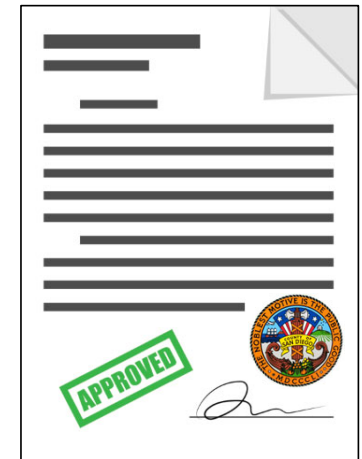
Federal and California Endangered Species Acts



Habitat Conservation Plan (HCP)

Natural Community Conservation Plan (NCCP)

Incidental Take Permit



North County Plan



Engage San Diego County

The screenshot shows the website for the North County Multiple Species Conservation Plan. At the top, there is a navigation bar with links for Home, About This Site, All Projects, and a search box. The main header features the County of San Diego logo and the title "North County Plan" in a large, serif font. Below the header, there are three small images: a bird, a plant, and a lizard. The main content area includes a breadcrumb trail "Home / North County Multiple Species Conservation Plan" and the title "North County Multiple Species Conservation Plan". There are social media icons for Facebook, Twitter, LinkedIn, and Email. A large image of a mountain range is shown on the left. To the right of the image, there is a text block describing the plan: "The County is developing a Multiple Species Conservation Plan for the northwestern area of the unincorporated county. Known as the North County Plan, the Plan will help preserve the area's rich biodiversity. All this while expanding recreation and streamlining development in less sensitive areas." Below this is an "Overview" section: "The Multiple Species Conservation Program (MSCP) is a preservation framework. It outlines how we can protect and connect the most valuable biological habitats in San Diego County. There are three regional plans: [South](#), [North](#), and [East](#). Each plan focuses on the unique threatened plant and animal species for". On the right side, there is a "Who's Listening" section with two entries: "Stephanie Neal" (Project Lead, Planning & Development Services, Email: MSCP@sdcounty.ca.gov) and "Bethany Principe" (MSCP Program Coordinator, Parks & Recreation, Email: MSCP@sdcounty.ca.gov).

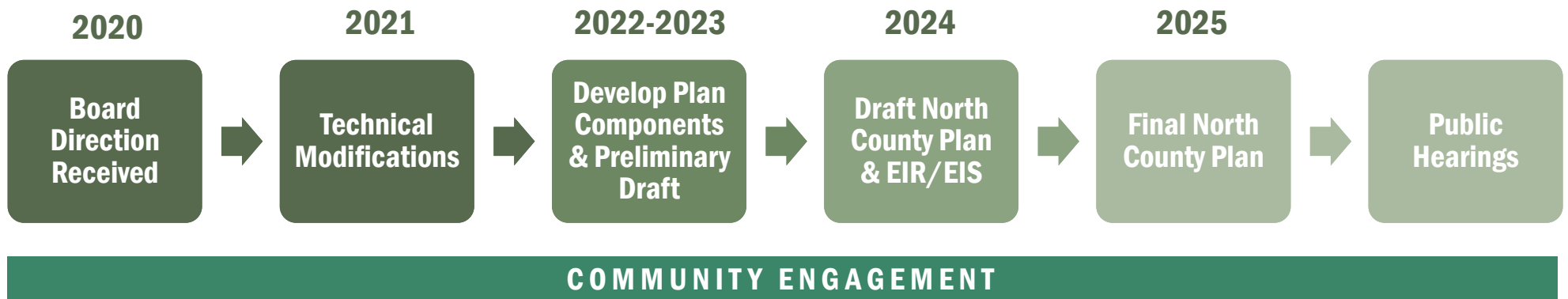
engage.sandiegocounty.gov/northcountyplan



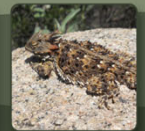
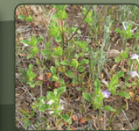
North County Plan



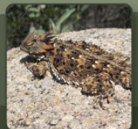
North County Plan Timeline



North County Plan

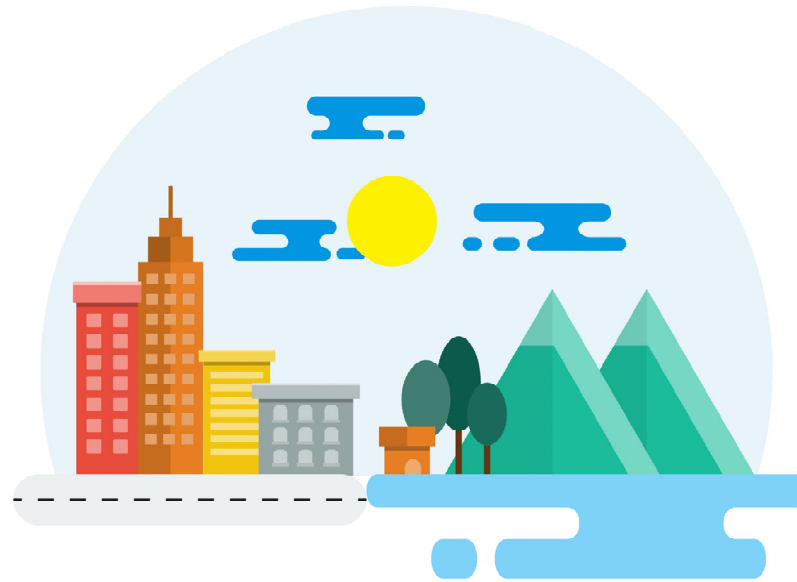


Plan Components

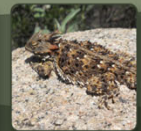
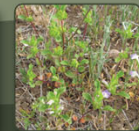


Effects Analysis

Forecast impacts to vegetation and Covered Species habitat from Covered Activities to estimate "take" needed



Natural habitat is preserved within the Priority Conservation Area to replace or "mitigate" the impacts to vegetation in rough-step



Effects Analysis



North County Plan

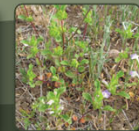
Chapter 4: Effects
Analysis

Implementation Documents

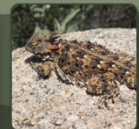
Biological Mitigation
Ordinance (BMO)



North County Plan



How do we forecast habitat impacts and future mitigation/conservation?

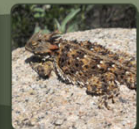


What is the Permit Term?

- Amount of time the County can issue permits for Take of Covered Species due to impacts from Covered Activities
- North County Plan is anticipated to have a 30-year Permit Term
 - Forecast amount of future habitat impacts and mitigation expected to occur within this timeframe only
 - Guidance on permit extension process will be included in the Plan



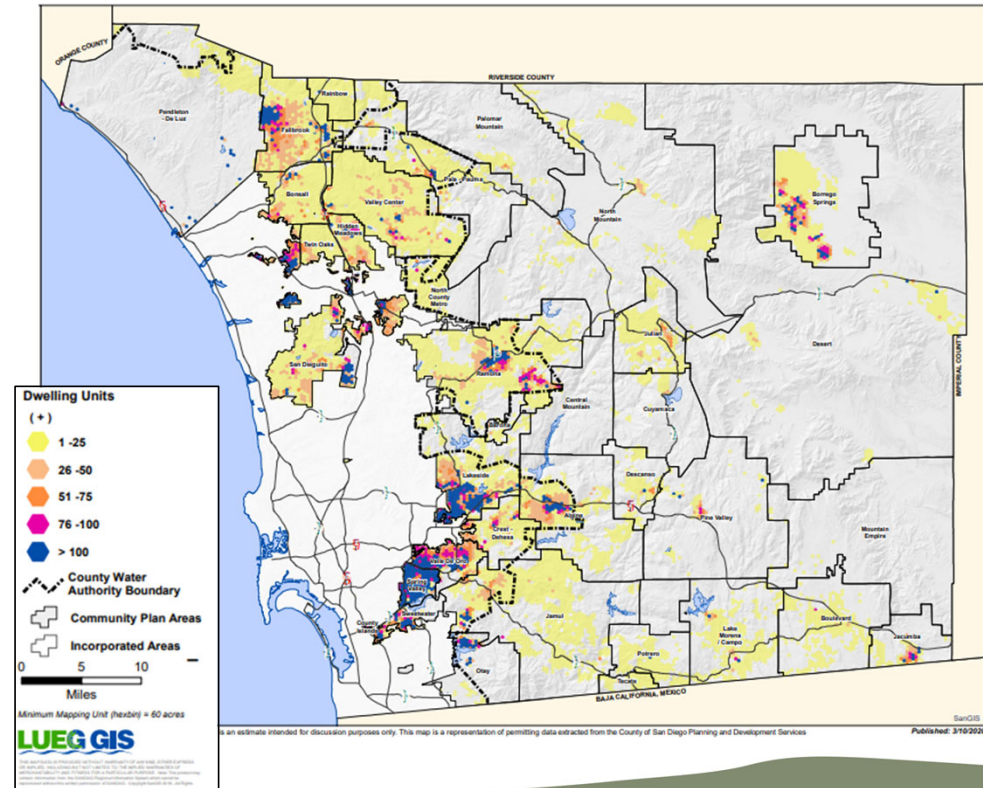
Future Development



General Plan

- San Diego County General Plan applies to the unincorporated area of the county and is the County's long-term blueprint for the vision of the future
- Land Use Element is a framework that guides how lands are to be conserved and developed in the unincorporated County

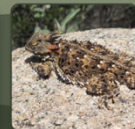
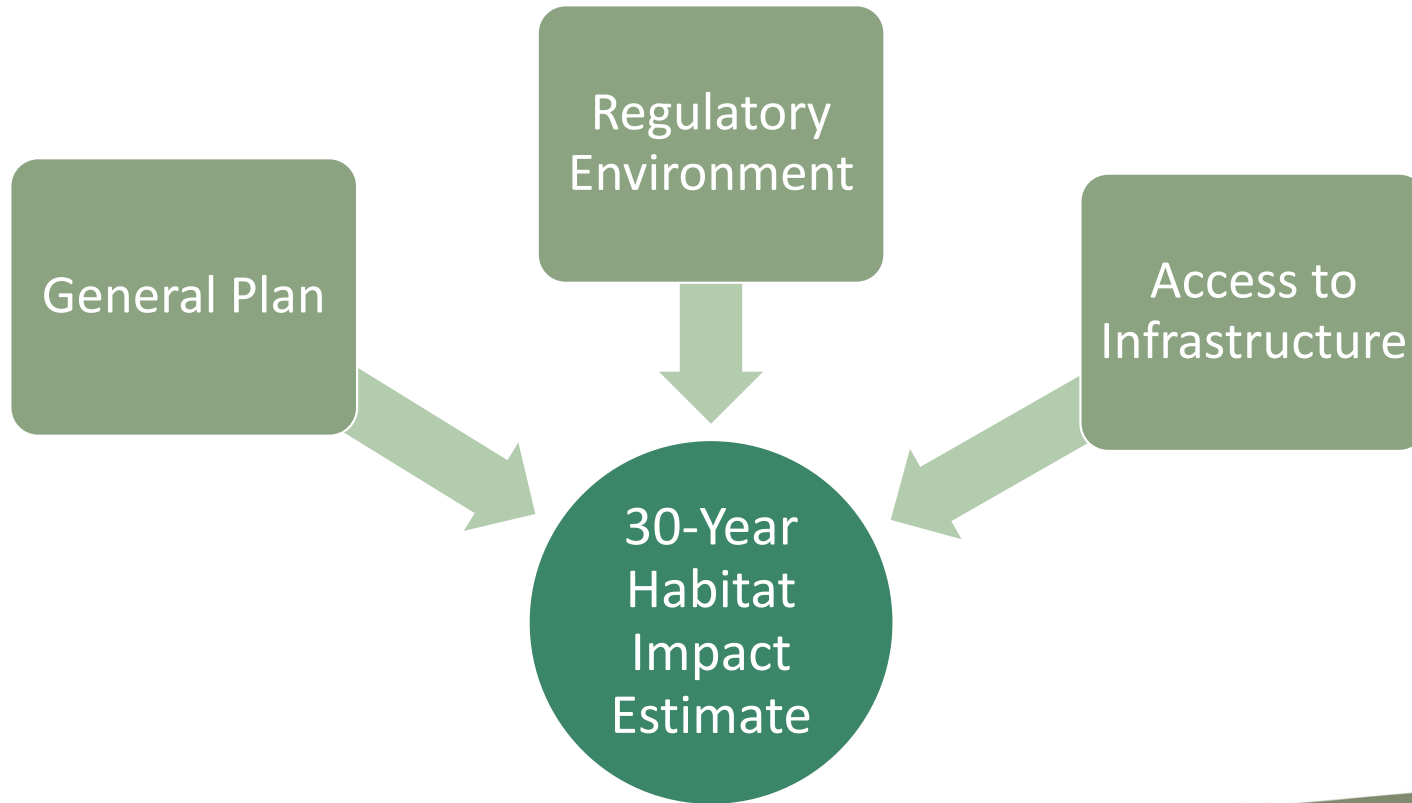
Housing Production & Capacity Portal



North County Plan



Future Development



Legislation Affecting Housing Forecasts



**Reduce greenhouse
gas emissions**



**Encourage infill
development**



**Improve public health
through active
transportation**

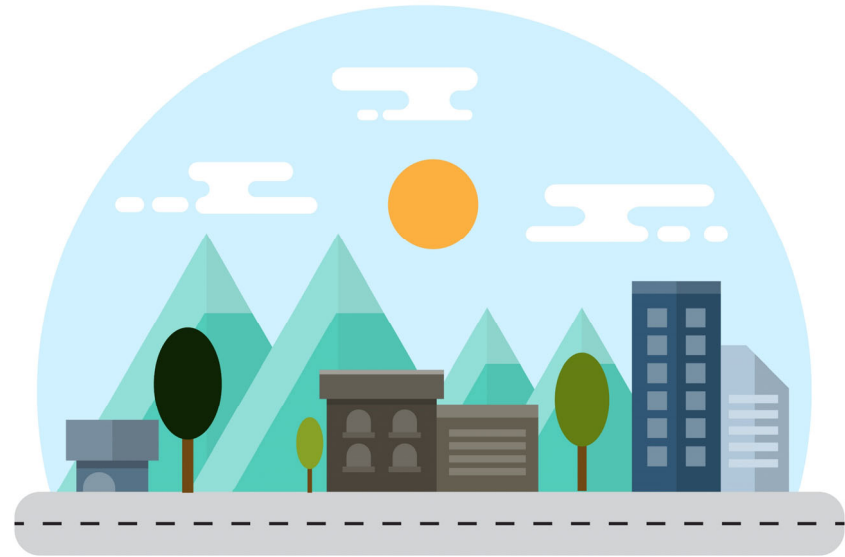


North County Plan



Access to Infrastructure

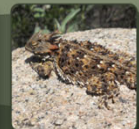
Access to essential services such as water, sewer, fire, and school districts can affect where new development is likely to occur






Future Development

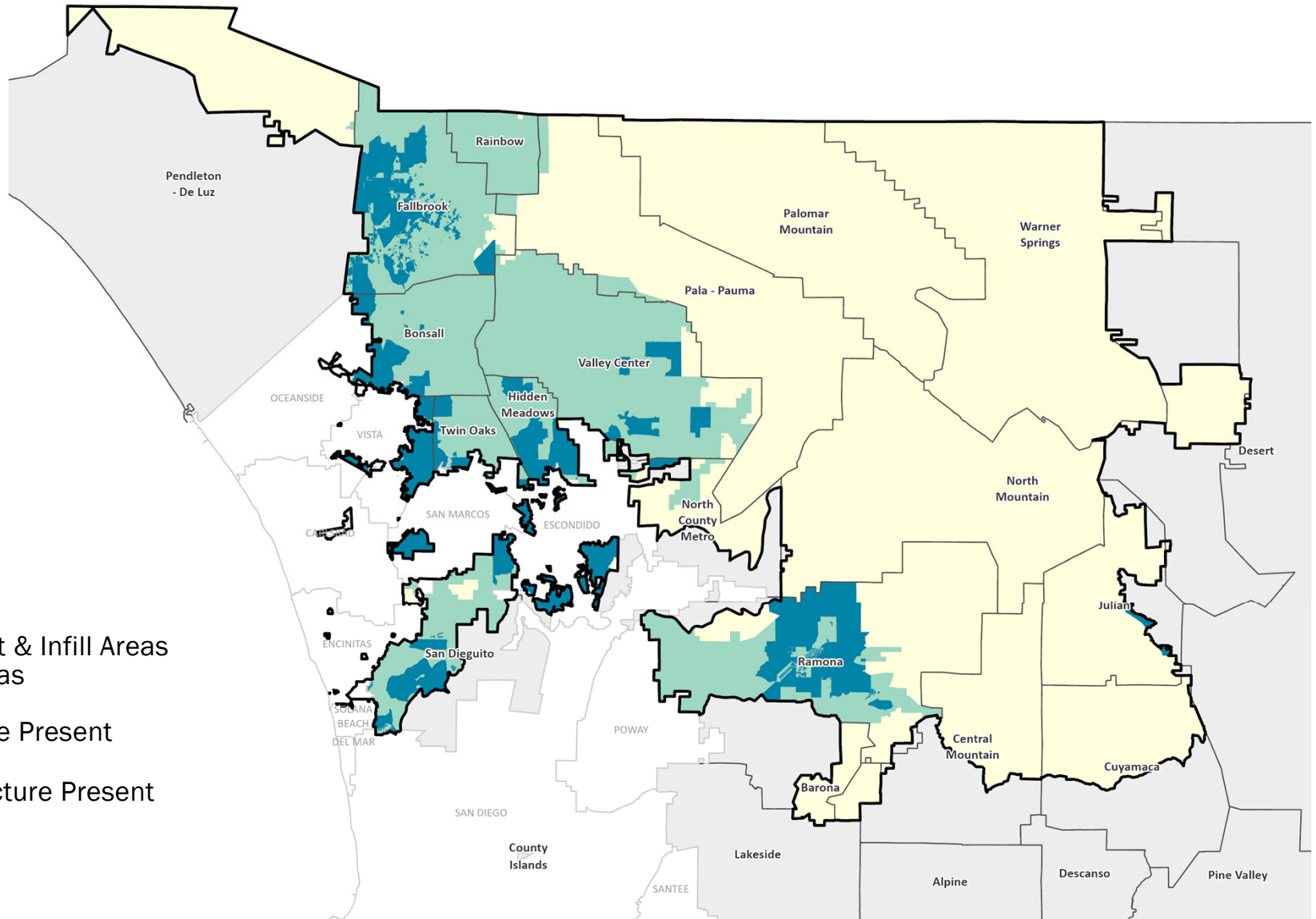
- To forecast habitat impacts under the North County Plan, the County considered:
 - VMT efficient areas
 - SB 9/35 applicability
 - Infrastructure presence (school, water, fire, sanitation)
- Percentages estimating the amount of General Plan capacity that will be built during the 30-year Permit Term were applied to each area to adjust the forecasted habitat impacts

VMT Board Option Most Likely to Develop (100%)*	SB 9/35 More Likely to Develop (100%)*	Infrastructure Present Likely to Develop (85%)*	No Infrastructure Present Unlikely to Develop (50%)*
<ul style="list-style-type: none"> • VMT & Infill Areas (as directed by the Board) 	<ul style="list-style-type: none"> • Criteria met for County adopted policies to comply with SB 9/35 	<ul style="list-style-type: none"> • Criteria met for: <ul style="list-style-type: none"> ○ Water ○ Sanitation ○ Fire ○ School 	<ul style="list-style-type: none"> • Criteria <u>not</u> met for: <ul style="list-style-type: none"> ○ Water ○ Sanitation ○ Fire ○ School

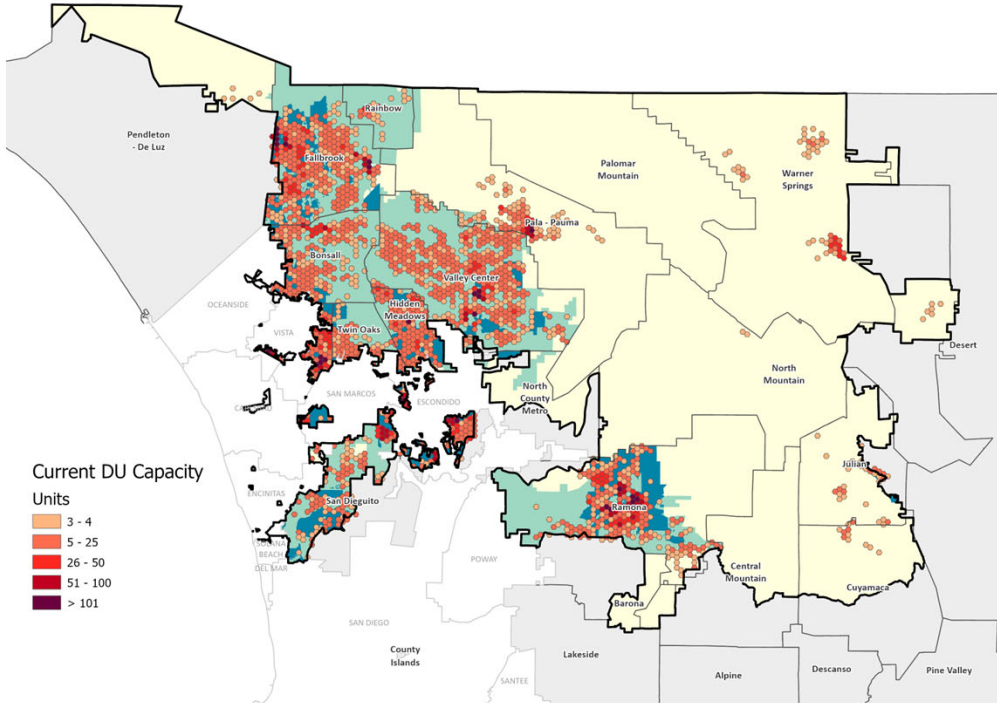


Legend

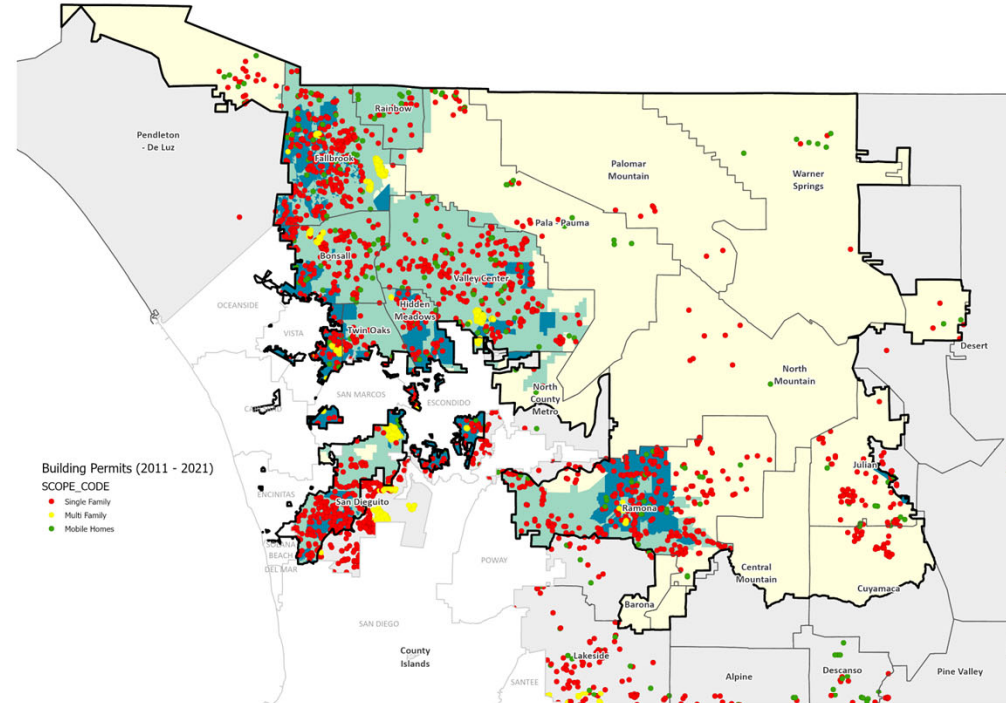
-  VMT Efficient & Infill Areas SB 9/35 Areas
-  Infrastructure Present
-  No Infrastructure Present



General Plan Dwelling Unit Capacity

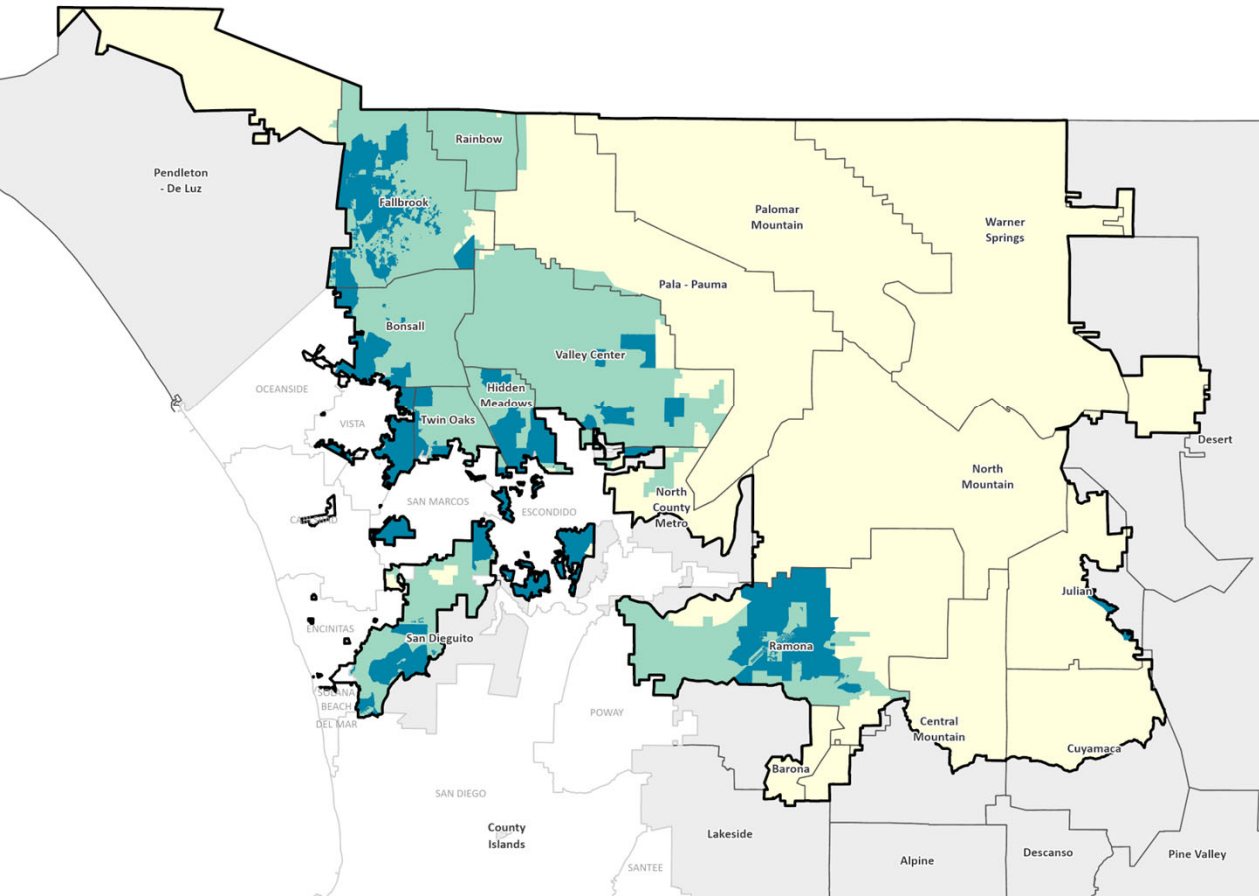


10-Year Permit History



North County Plan

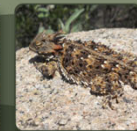
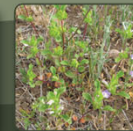




Future Development	
Forecasted Habitat Impacts	9,992
Anticipated Mitigation	17,378



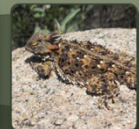
North County Plan



Discussion



Single-Family Home Exemption



Single-Family Home Exemption



Outside the PCA, up to five (5) acres of clearing or grading of natural vegetation for single-family homes is exempt* from the BMO



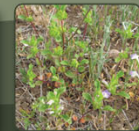
Within the PCA, up to two (2) acres of clearing or grading of natural vegetation for single-family homes is exempt* from the BMO



Limited to undeveloped parcels ten (10) acres or less, which are zoned for single-family residential

*County assumes responsibility to mitigate for impacts

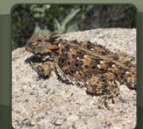
Any clearing or grading of natural vegetation exceeding these allowances including clearing required for fire protection, shall be subject to the mitigation requirements of this Plan and the North County BMO (i.e., not exempt)



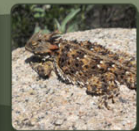
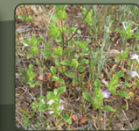
Single-Family Home Exemption

- Applied percentages estimating likelihood of development to forecast impacts that under the single-family home exemption

Category	Forecasted Impacts	Anticipated Mitigation
Future Development	9,992	17,378
Single Family Home Exemption	5,091	6,760
SUBTOTAL	15,083	24,138



Agricultural Clearing Exemption



Agricultural Clearing Exemption

- For new agriculture, must establish an agricultural operation within one year and to retain the land in agriculture for at least ten years
- For expanded agriculture, land has been farmed during three of the last five years and intends to retain his or her land in agriculture for the next five years



Agricultural Clearing Exemption



Clearing or grading of natural vegetation for agricultural purposes is exempt* from the BMO for up to 6,000 acres total in the Plan Area (1,000 acres within PCA)

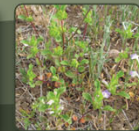


Wildlife best management practices would be required for clearing within the PCA



Limit clearing allowance for a single-property owner, aggregated over multiple clearing permits

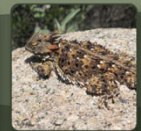
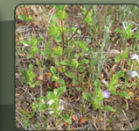
***County assumes responsibility to mitigate for impacts**



Agricultural Clearing Exemption

- 6,000 acres of new and expanded agriculture was applied to areas of natural habitat outside of the General Plan and single-family home impacted areas to estimate mitigation anticipated

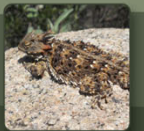
Category	Forecasted Impacts	Anticipated Mitigation
Future Development	9,992	17,378
Single Family Home Exemption	5,091	6,760
Agricultural Clearing Exemption	6,000	7,256
SUBTOTAL	21,083	31,394



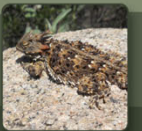
Discussion



North County Plan



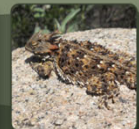
Projects on Other Public Lands



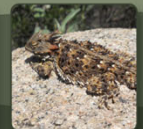
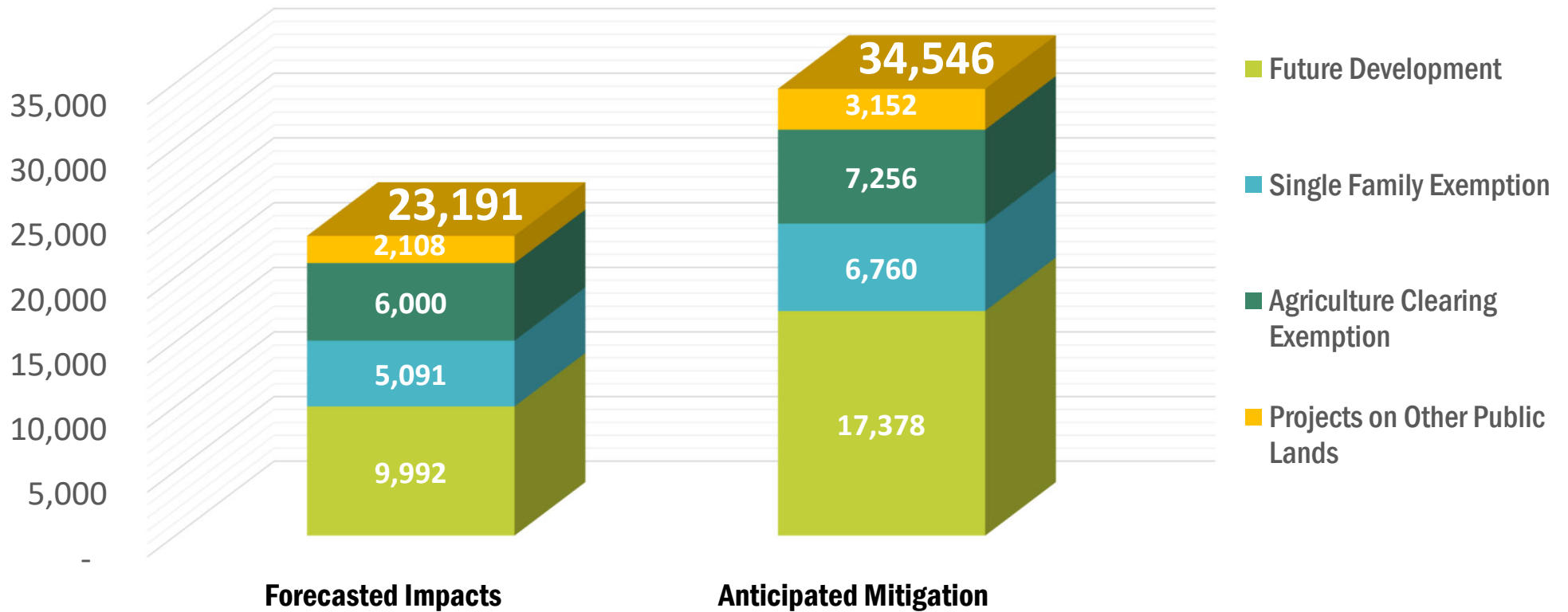
Projects on Other Public Lands

- Lands not be subject to County regulatory authority may voluntarily seek such take coverage from the County through a Certificate of Inclusion
- Effects Analysis includes 10% of maximum allowable impacts will be included for projects on these other public lands

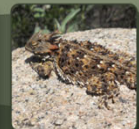
Category	Forecasted Impacts	Anticipated Mitigation
Future Development	9,992	17,378
Single Family Home Exemption	5,091	6,760
Agricultural Clearing Exemption	6,000	7,256
Projects on Other Public Lands (10%)	2,108	3,152
SUBTOTAL	23,191	34,546



North County Plan Impacts and Mitigation



NCCP Contribution



NCCP Contribution

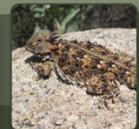
“Above and Beyond”

In addition to the mitigation requirements required in a Habitat Conservation Plan (HCP), the Natural Communities Conservation Planning (NCCP) Act requires that conservation of Covered Species must contribute to the recovery of those species

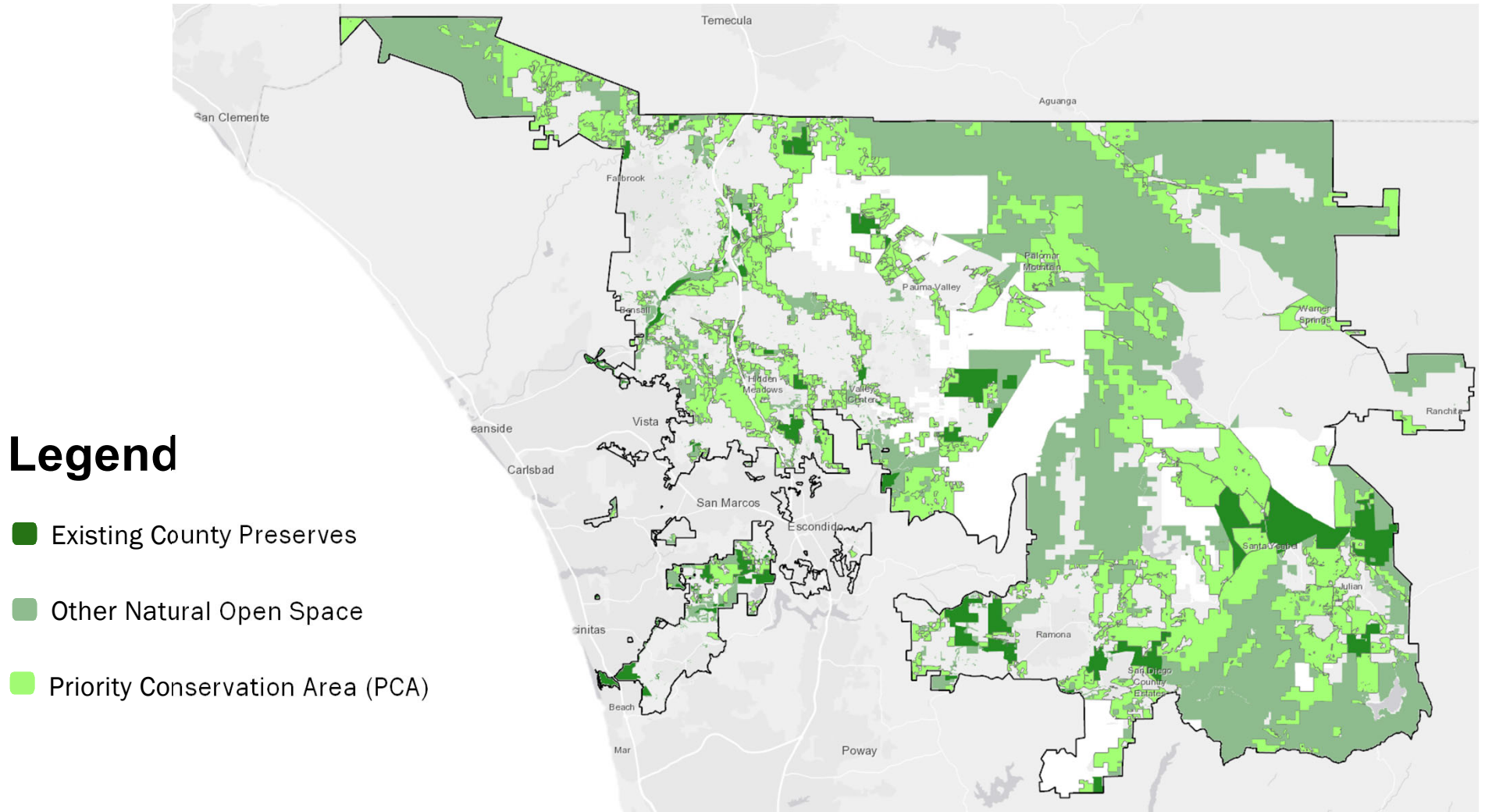
Category	Forecasted Impacts	Anticipated Mitigation/ Conservation
Future Development	9,992	17,378
Single Family Home Exemption	5,091	6,760
Agricultural Clearing Exemption	6,000	7,256
Projects on Other Public Lands (10%)	2,108	3,152
Future NCCP Contribution (5%)	-	1,727
SUBTOTAL	23,191	36,273



North County Plan



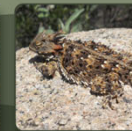
North San Diego County Open Space Network



Discussion



North County Plan



What comes next?

- Next Stakeholder Working Group meeting is scheduled for November 15
 - Overview of the Conservation Strategy components, structure, and approach
 - Following the meeting, the draft text will be provided on our website/Engage San Diego County page for a 60-day review period

Stakeholder Working Group

Wednesday, November 15
2 PM – 3 PM

Public Workshops

Thursday, November 16
6 PM – 7 PM



Thank you for participating!



Project Contact: Stephanie Neal
(858) 505-6677
MSCP@sdcounty.ca.gov



Project website:
www.sandiegocounty.gov/pds/mscp



North County Plan

