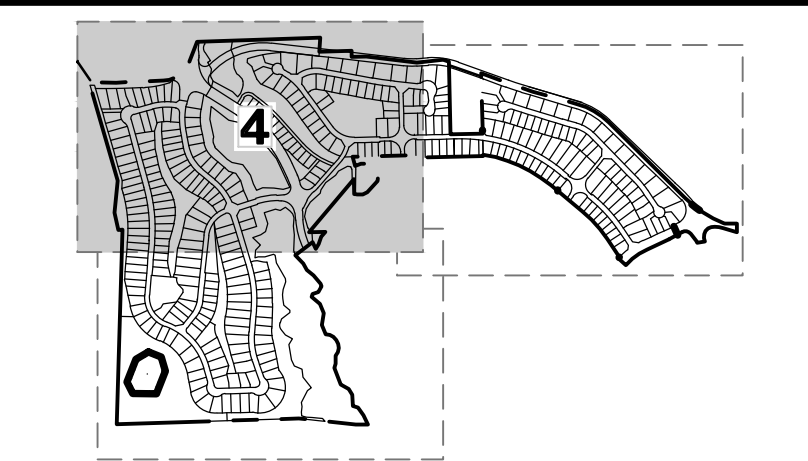
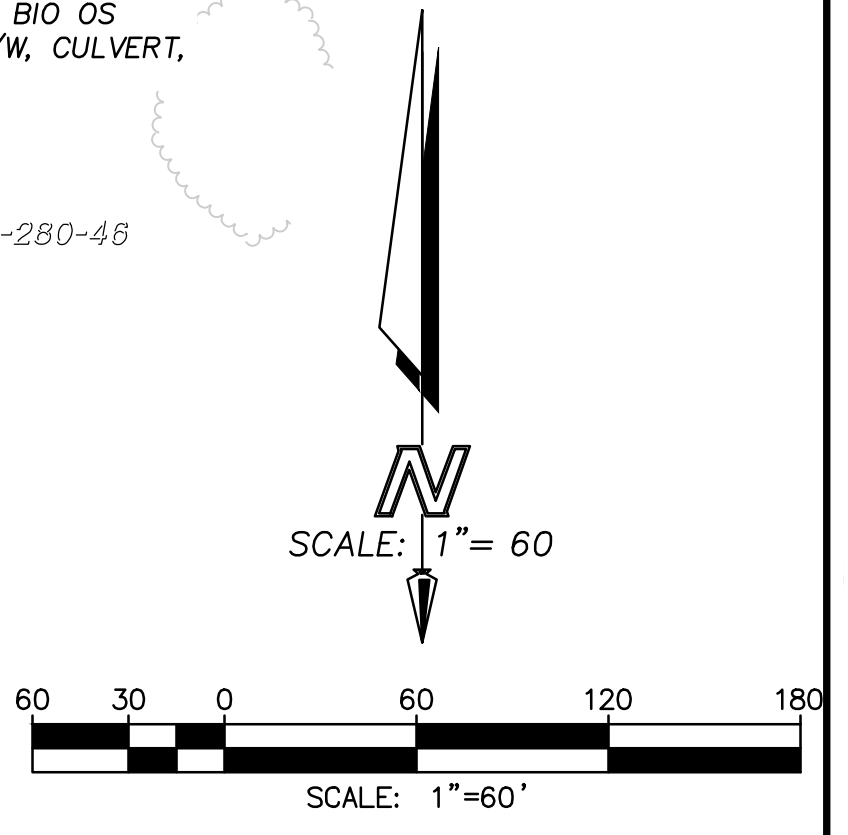


SEE SHEET 5

SEE SHEET 6

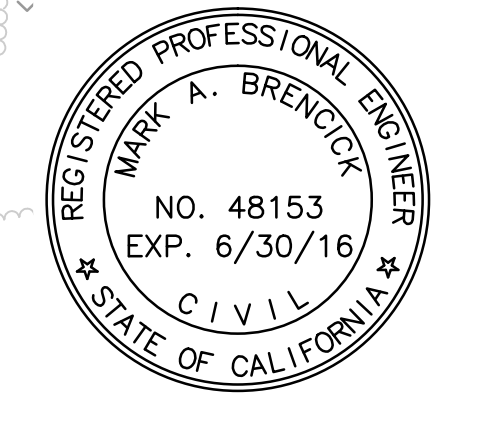
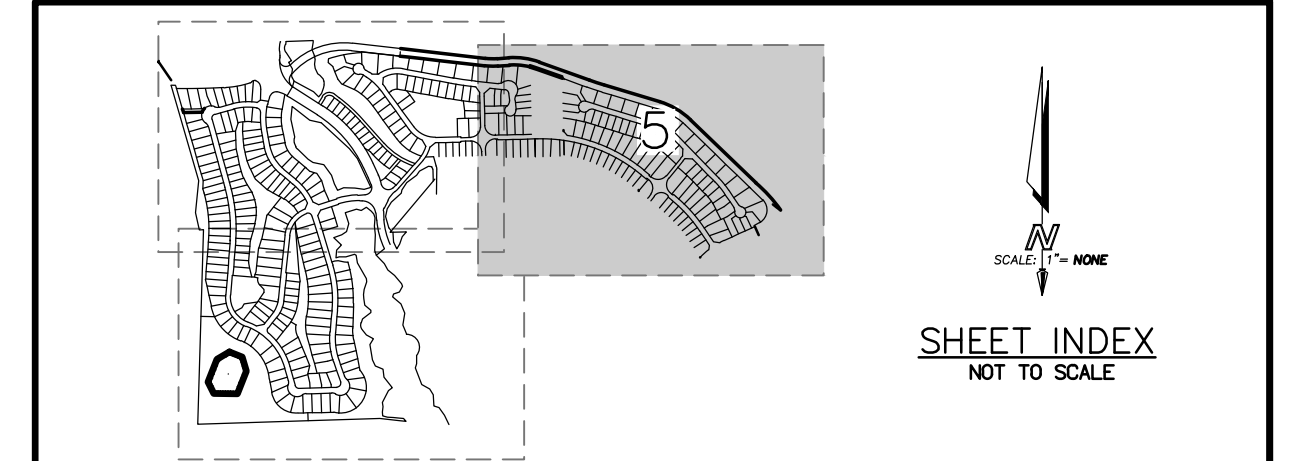
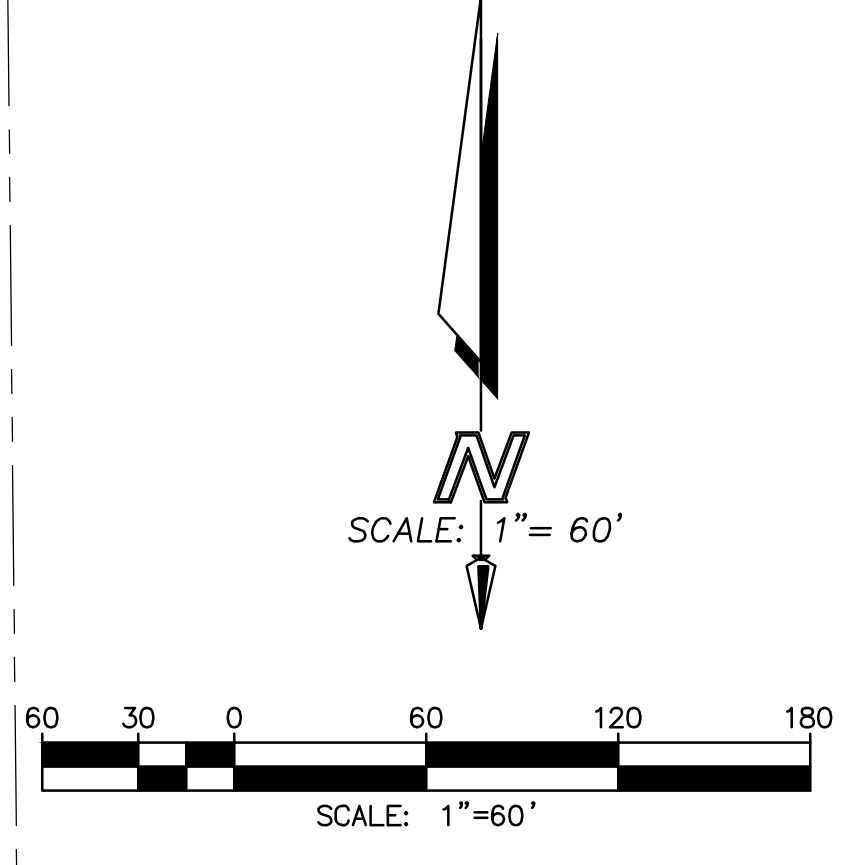
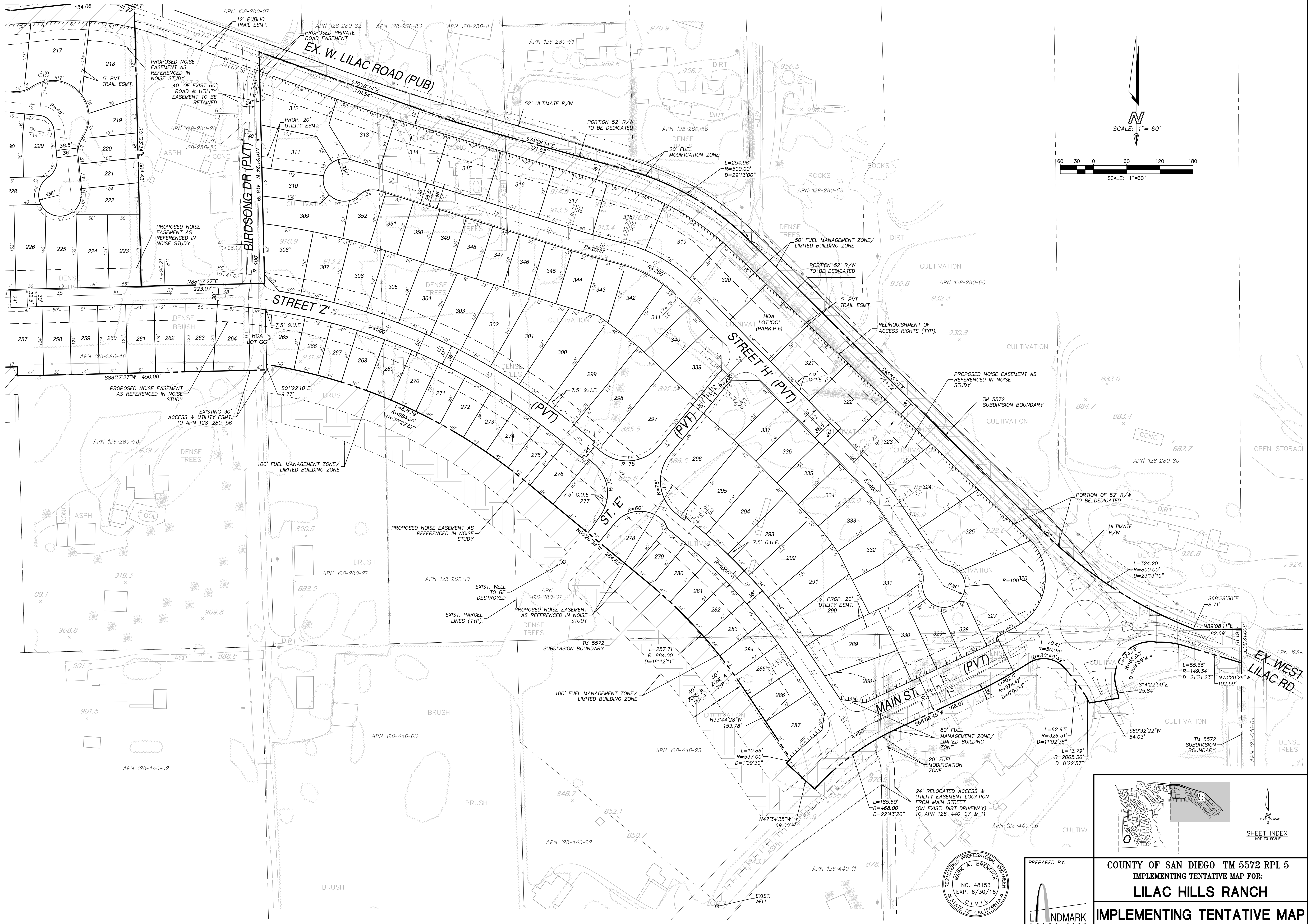


PREPARED BY:
 NDMARK
 Planning Engineering Surveying
 2005 Claremont Avenue, Suite 200
 San Diego, CA 92111 (619) 581-0000

COUNTY OF SAN DIEGO TM 5572 RPL 5
 IMPLEMENTING TENTATIVE MAP FOR:
LILAC HILLS RANCH
 IMPLEMENTING TENTATIVE MAP
 SHEET NO. 4 OF 6

07-01-16 SUBMITTAL

SEE SHEET 4



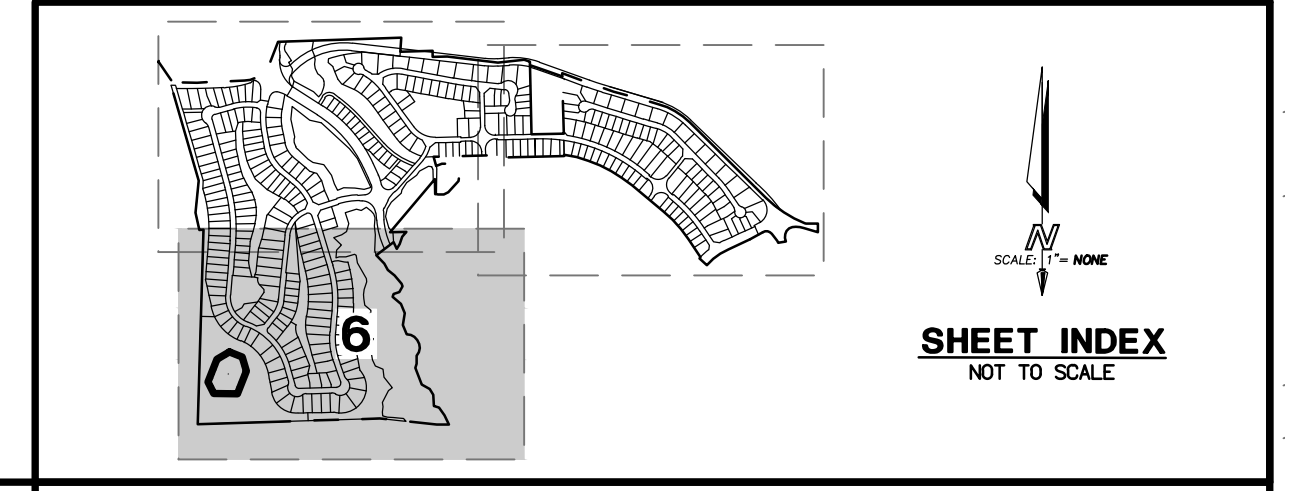
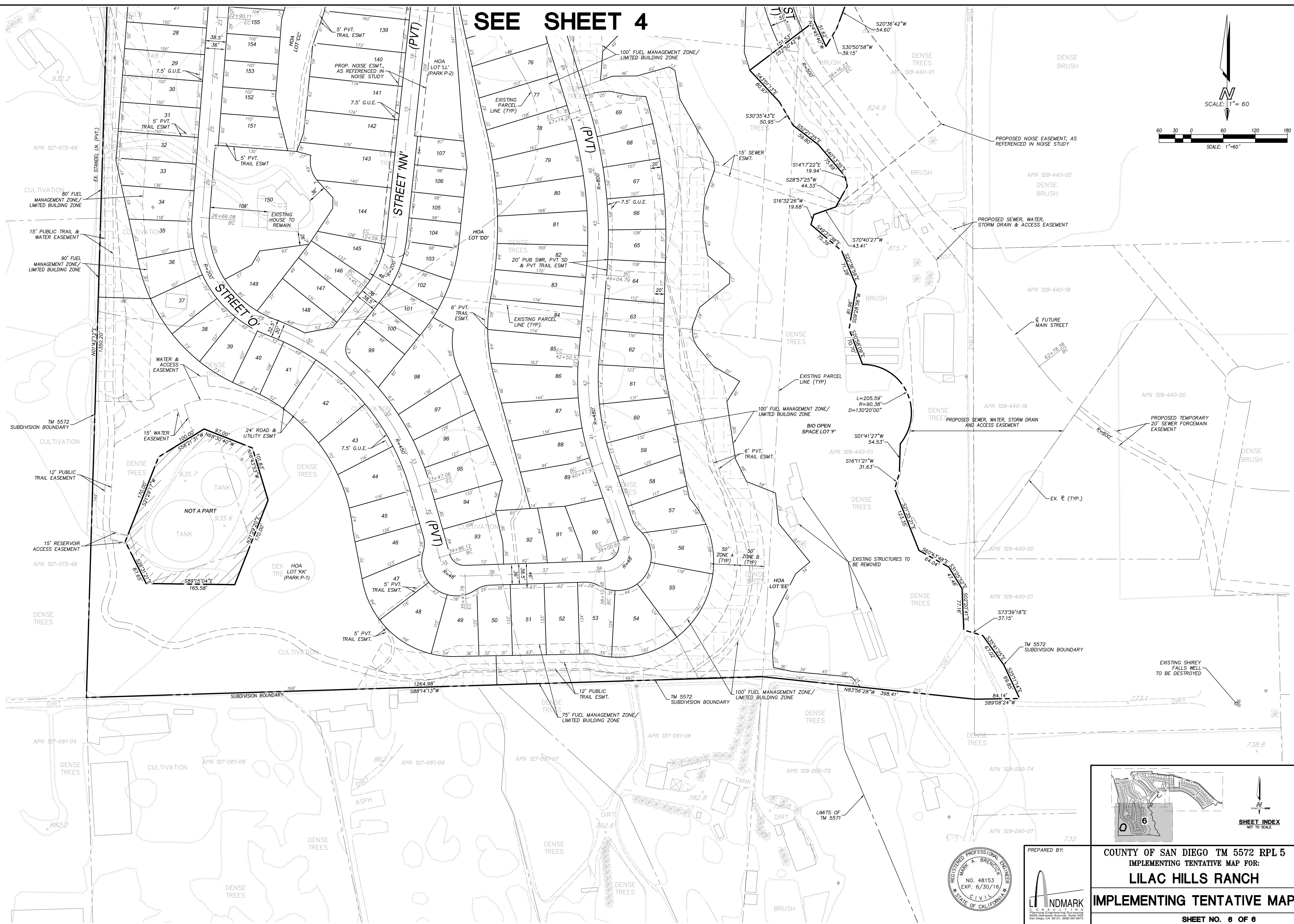
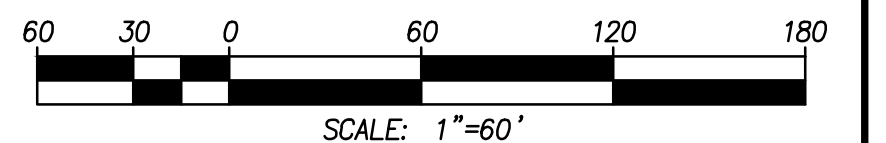
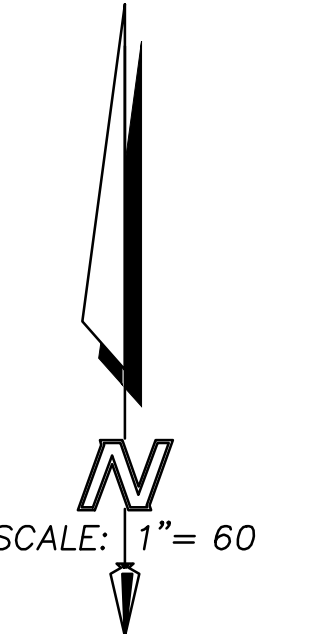
PREPARED BY:

 ND MARK
 CIVIL ENGINEERING & PLANNING
 2005 CHARLES AVENUE, SUITE 200
 SAN DIEGO, CA 92111 (619) 581-0771

COUNTY OF SAN DIEGO TM 5572 RPL 5
 IMPLEMENTING TENTATIVE MAP FOR:
LILAC HILLS RANCH
IMPLEMENTING TENTATIVE MAP
 SHEET NO. 5 OF 6

07-01-16 SUBMITTAL

SEE SHEET 4



PREPARED BY:
INDMARK
CIVIL ENGINEERING
2005 Clearwater Avenue, Suite 200
San Diego, CA 92111 (619) 581-0771

COUNTY OF SAN DIEGO TM 5572 RPL 5
IMPLEMENTING TENTATIVE MAP FOR:
LILAC HILLS RANCH
IMPLEMENTING TENTATIVE MAP
SHEET NO. 6 OF 6

07-01-16 SUBMITTAL