

Photo Location Map



Photograph A. From terminus of Eden Valley Lane, looking into Neighborhood 3.



Photograph B. View to the west from slight rise in Neighborhood 3.

E:\PROJECTS\1\IPQ\IPQ_08_Valiano\Map\EN\Visual\Fig16a_OnsiteVisual.mxd IPQ-11 09/05/13 RRK

On-site Visual Elements

VALIANO

Figure 16a



Photograph C. Looking southwesterly into Neighborhood 5 from the intersection of Country Club Drive and Mt. Whitney Road.



Photograph D. On-site pond in Neighborhood 5.

On-site Visual Elements

VALIANO

Figure 16b



Photograph E. On-site residences in Neighborhood 5.



Photograph F. Looking northeast over the equestrian facility to an off-site hill with residences.

On-site Visual Elements

VALIANO

Figure 16c



Photograph G. Looking westerly from southeast corner of the Project site.



Photograph H. Looking southwest from private road south of Neighborhood 5.

On-site Visual Elements

VALIANO

Figure 16d



Photographs I and J. On-site dilapidated barn and existing well tank in southeastern parcel.



Photographs K and L. On-site barns associated with equestrian center in southeastern parcel.

On-site Visual Elements

VALIANO

Figure 16e



Photograph A. View looking southwest from Hill Valley Drive.



Photograph B. View looking southwest from Country Club Drive.

E:\PROJECTS\I\PO\IPQ-08_Valiano\Map\ENV\Visual\Fig17a_OffSiteVantagePoints.mxd IPQ-11 09/05/13 - RK

Off-site Vantage Points

VALIANO

Figure 17a



Photograph C. View looking northwest from Country Club Drive, with Harmony Grove Village grading in foreground (Summer 2014).



Photograph D. View looking southeast from Seeforever Drive.

Off-site Vantage Points

VALIANO

Figure 17b



Photograph E. View looking west from Live Oak Road, obstructed view of site.



Photograph F. View looking west from Oak Canyon Place, obstructed view of site.

E:\PROJECTS\17\1701\1701_08_Valiano\Map\ENV\Visual\Fig17c_OffsiteVantagePoints.indd IPQ-11 09/05/13 - RK

Off-site Vantage Points

VALIANO

Figure 17c



Photograph G. View looking southwest from the trail west of the hospital.



Photograph H. View looking southwest from the trail west of the hospital.

E:\PROJECTS\11\110\11048_Valiano\Map\EN\Visual\Fig17d_OffsiteVantagePoints.indd IPQ-11 09/05/13 -RKK

Off-site Vantage Points

VALIANO

Figure 17d



Photograph I. View looking north from Del Dios Highlands Preserve.






Photograph J. View looking north from Elfin Forest Recreational Reserve.

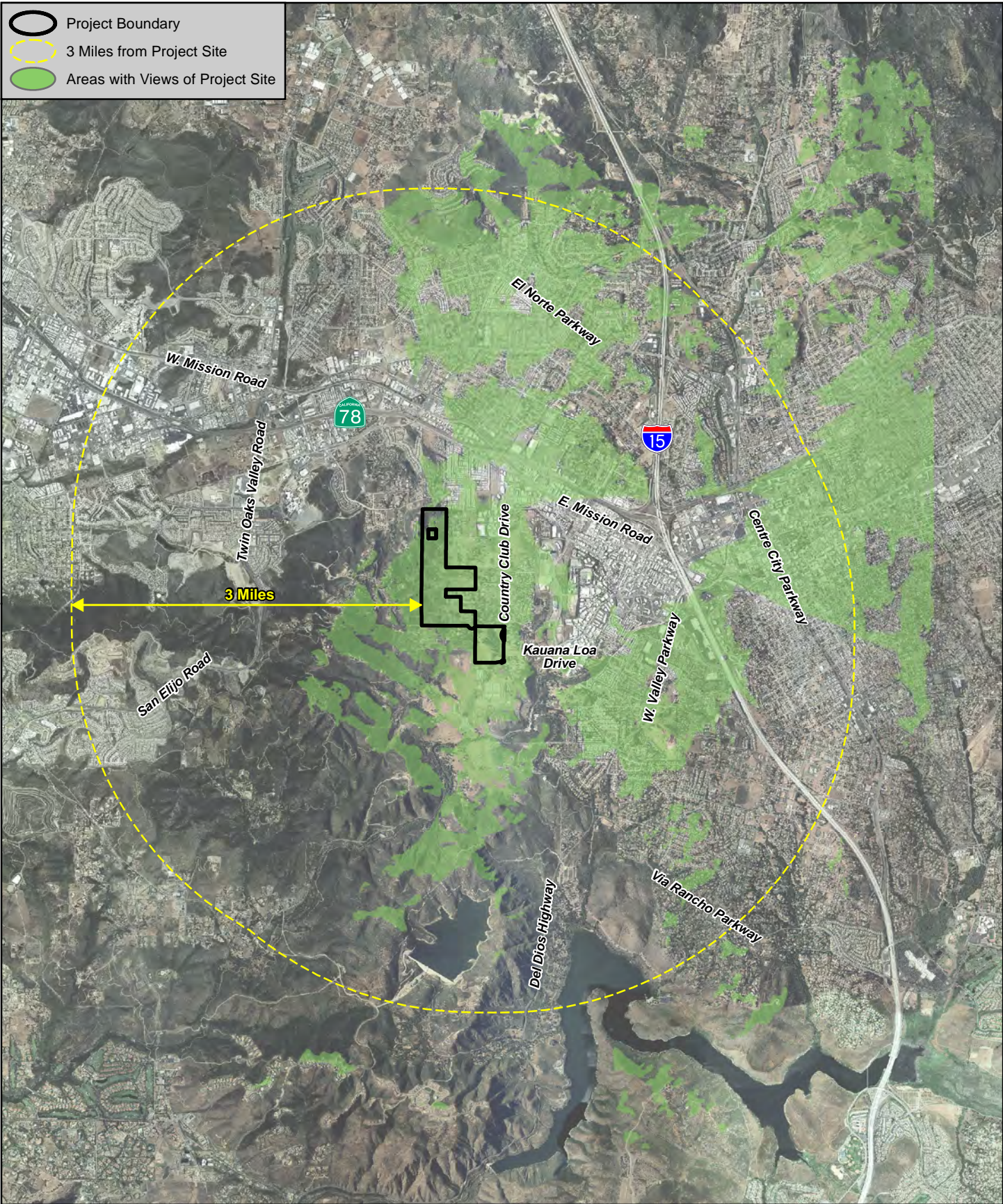
E:\PROJECTS\11\1101\110108_Valiano\Map\EN\Visual\Fig17e_OffsiteVantagePoints.mxd IPQ-11 09/05/13 - RK

Off-site Vantage Points

VALIANO

Figure 17e

-  Project Boundary
-  3 Miles from Project Site
-  Areas with Views of Project Site



E:\PROJECTS\I\PO\I\PO-08_Valiano\Map\ENV\Visual\Fig18_Viewshed.mxd IPO-11 04/29/14-RK

Project Viewshed Map

VALIANO

Figure 18

I:\PROJECTS\1100\1100-08_Valiano\Map\ENV\Visual\Fig 19a_19a_Existing Views.snd 11/25/14 -RK



Key View 1 - Looking west from Country Club Drive toward northern portion of Project site (Neighborhood 4)



Key View 2 - Looking southwest from Country Club Drive toward southeastern corner of Project site (Neighborhood 5)

I:\PROJECTS\1100\1100-08_Valiano\Map\ENV\Visual\Fig 19a-19d_Existing Views.mxd



Key View 3 - Looking northwest from Country Club Drive toward southeastern corner of Project site (Neighborhood 5)

I:\PROJECTS\11\1101\08_Valiano\Map\ENV\Visual\Fig 19a-19d_Existing Views.indd