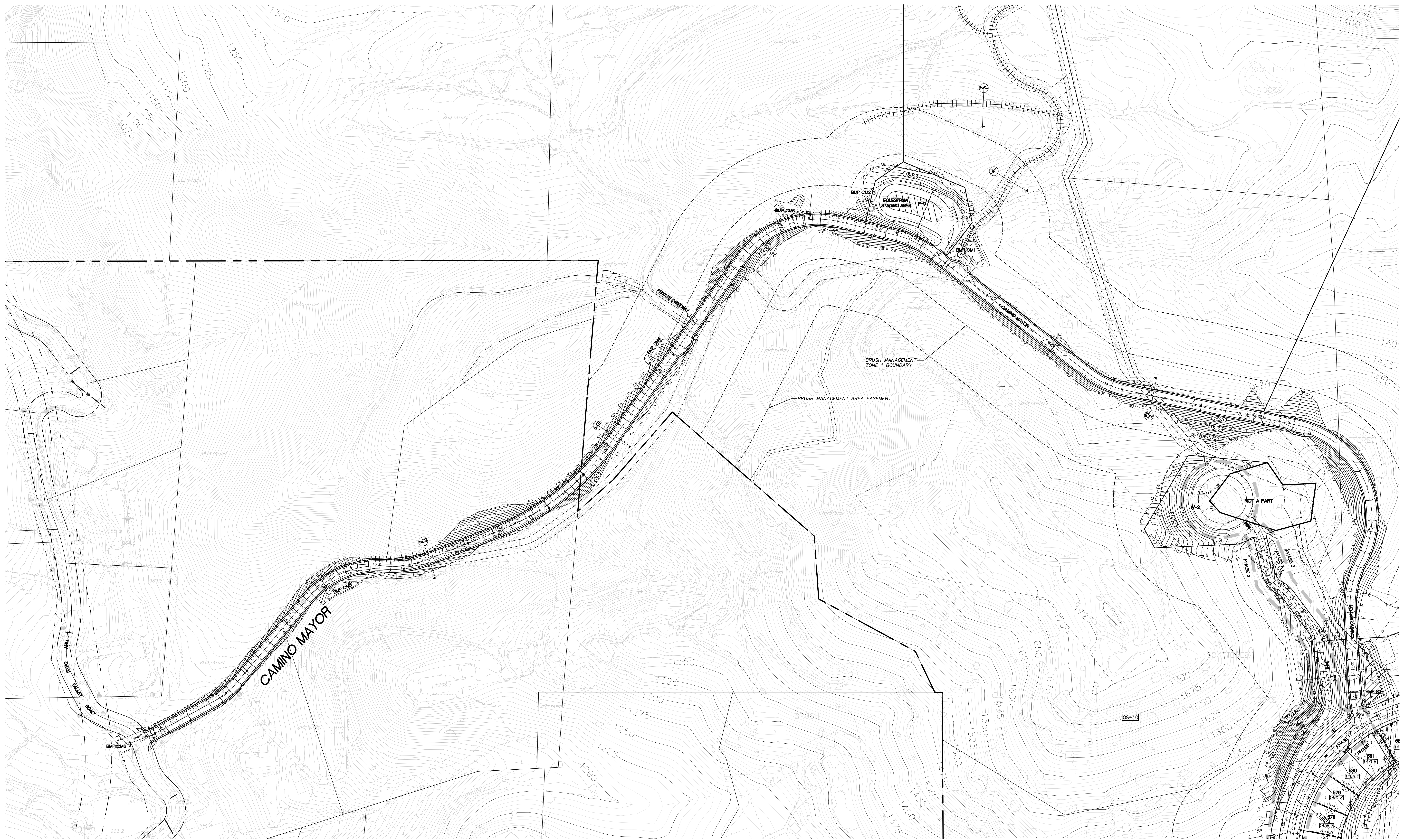
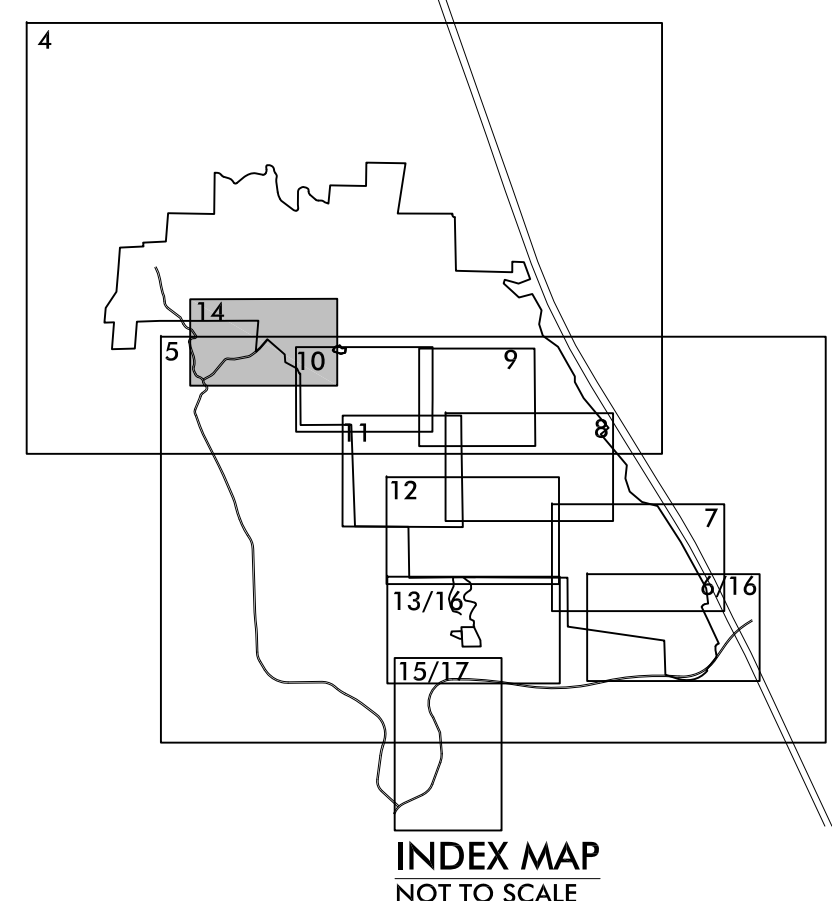
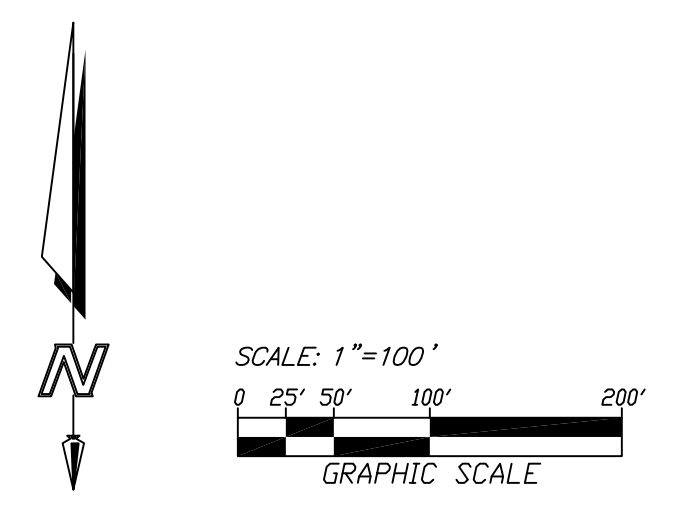


COUNTY OF SAN DIEGO TRACT TM \_\_\_\_\_  
 PRELIMINARY GRADING PLAN  
 NEWLAND SIERRA



SEE SHEET 10

SEE SHEET 10



**ENGINEER OF WORK**  
 FUSCOE ENGINEERING  
 6390 GREENWICH DRIVE, STE. 170  
 SAN DIEGO, CA 92122  
 (858)554-1500



ERIC K. ARMSTRONG RCE 36083 DATE \_\_\_\_\_

**SHEET 14 OF 17**

REV.	DATE	REVISION

**FUSCOE ENGINEERING**  
 6390 Greenwich Drive, Suite 170  
 San Diego, California 92122  
 tel 858.554.1500 • fax 858.597.0335  
 www.fuscoe.com

F:\PROJECTS\2006\NEWLAND\COMMENTS\REVISED\PLAN\10\116-15\_1033.DWG PLOTTER: HP DesignJet 5000 PS