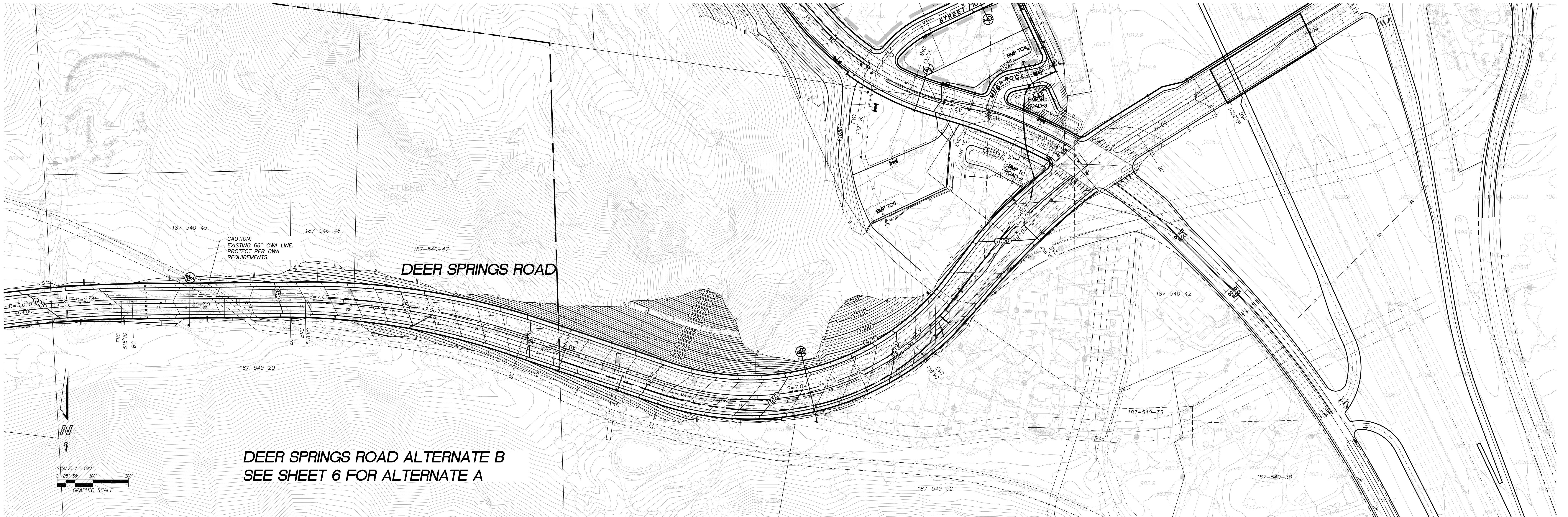


COUNTY OF SAN DIEGO TRACT TM _____
 PRELIMINARY GRADING PLAN
 NEWLAND SIERRA

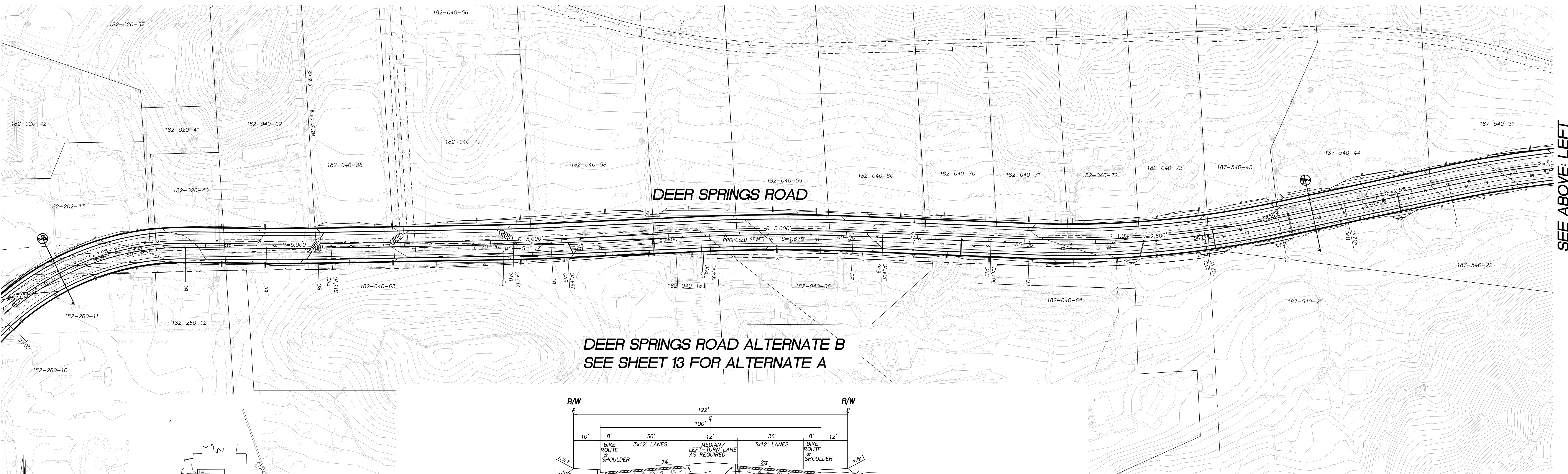
SEE SHEET 7

SEE BELOW: RIGHT

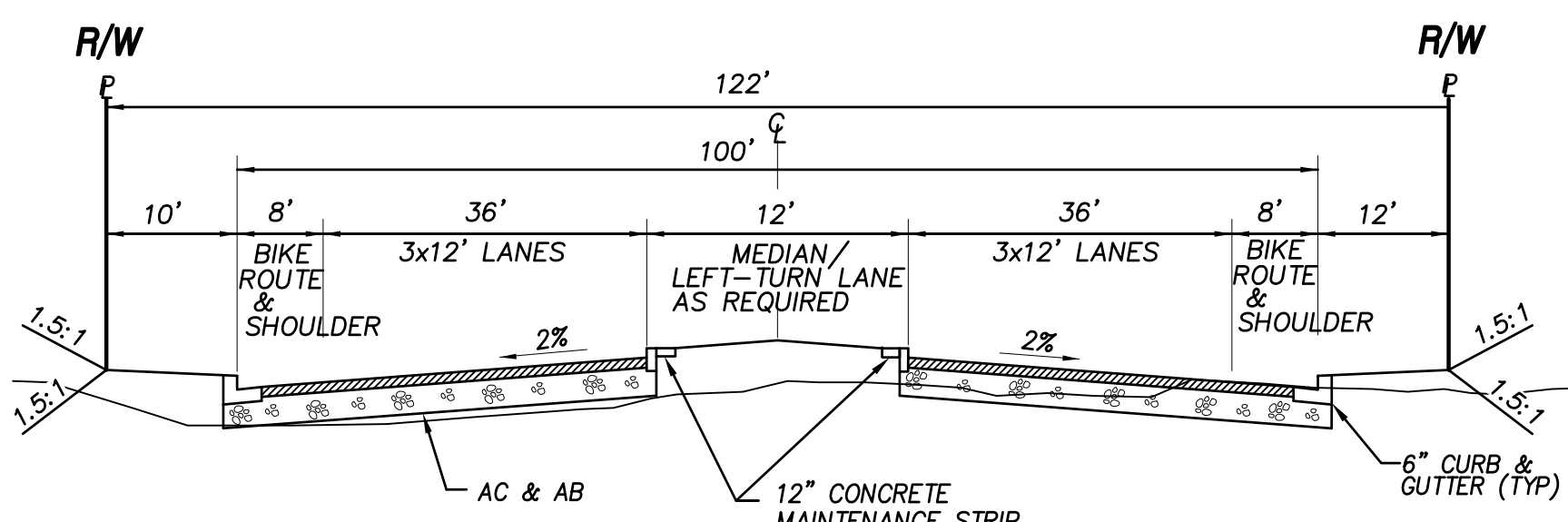


DEER SPRINGS ROAD ALTERNATE B
 SEE SHEET 6 FOR ALTERNATE A

SEE SHEET 17

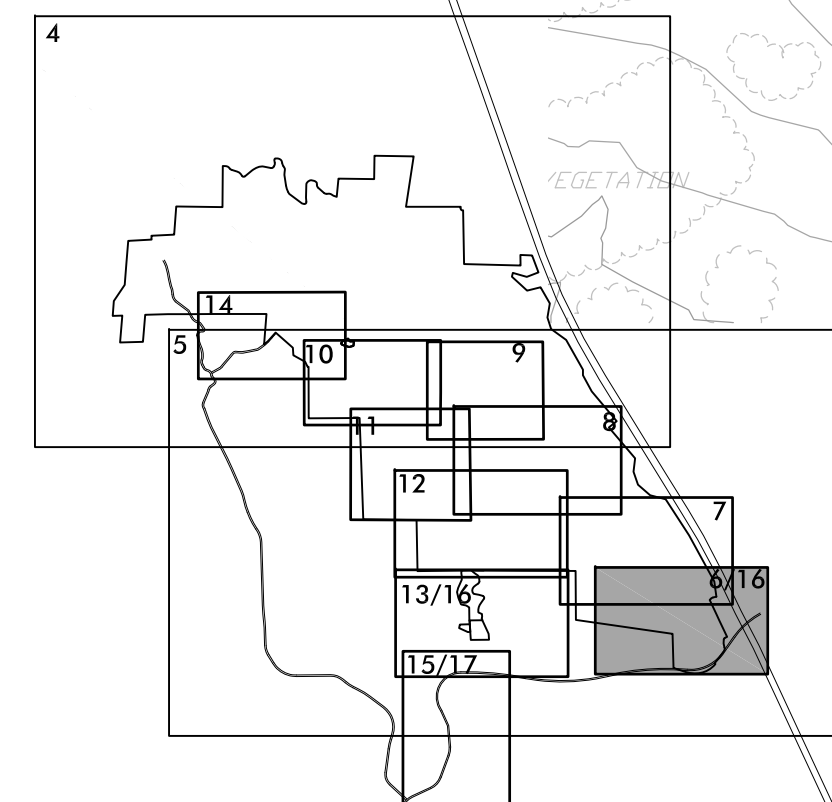


DEER SPRINGS ROAD ALTERNATE B
 SEE SHEET 13 FOR ALTERNATE A



PROPOSED PUBLIC STREET SECTION FOR:
 DEER SPRINGS ROAD
 6.2 PRIME ARTERIAL
 NO SCALE

SEE ABOVE: LEFT



INDEX MAP
 NOT TO SCALE

SHEET 16 OF 17

NO.	DATE	REVISION

ENGINEER OF WORK
 FUSCOE ENGINEERING
 6390 GREENWICH DRIVE, STE. 170
 SAN DIEGO, CA 92122
 (619) 554-1500



ERIC K. ARMSTRONG RCE 36083 DATE

FUSCOE
 ENGINEERING
 6390 Greenwich Drive, Suite 170
 San Diego, California 92122
 tel 858.554.1500 • fax 858.597.0335
 www.fuscoe.com