

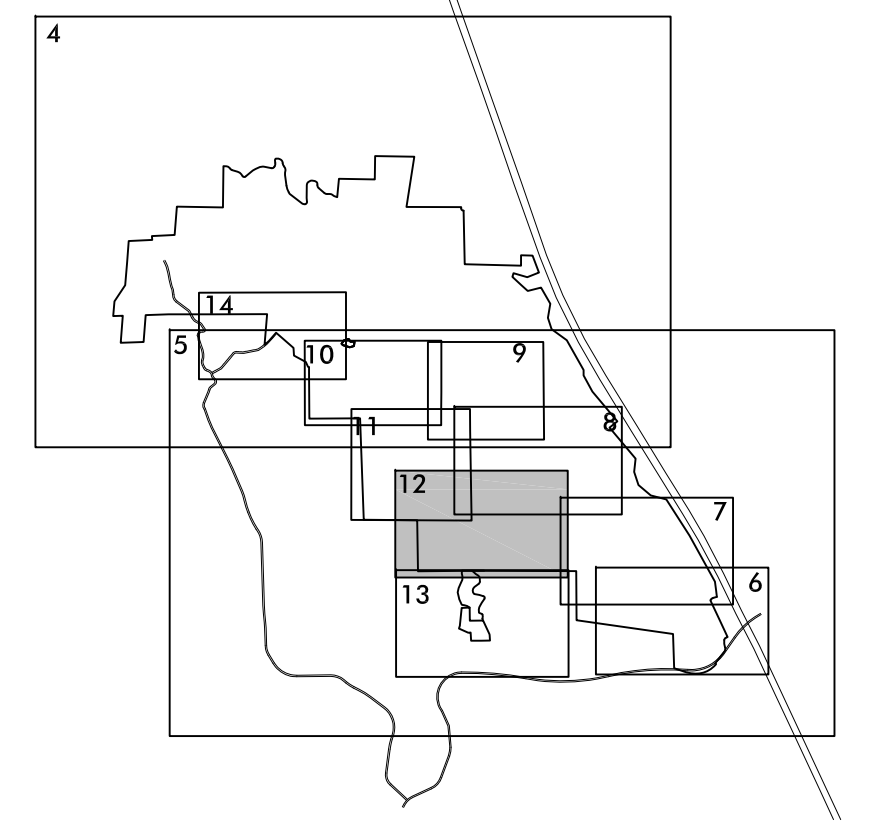
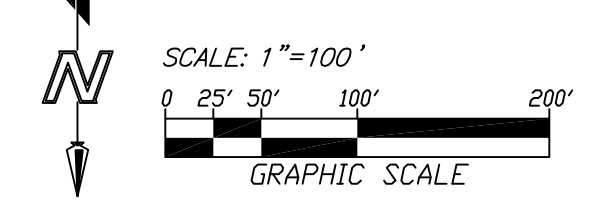
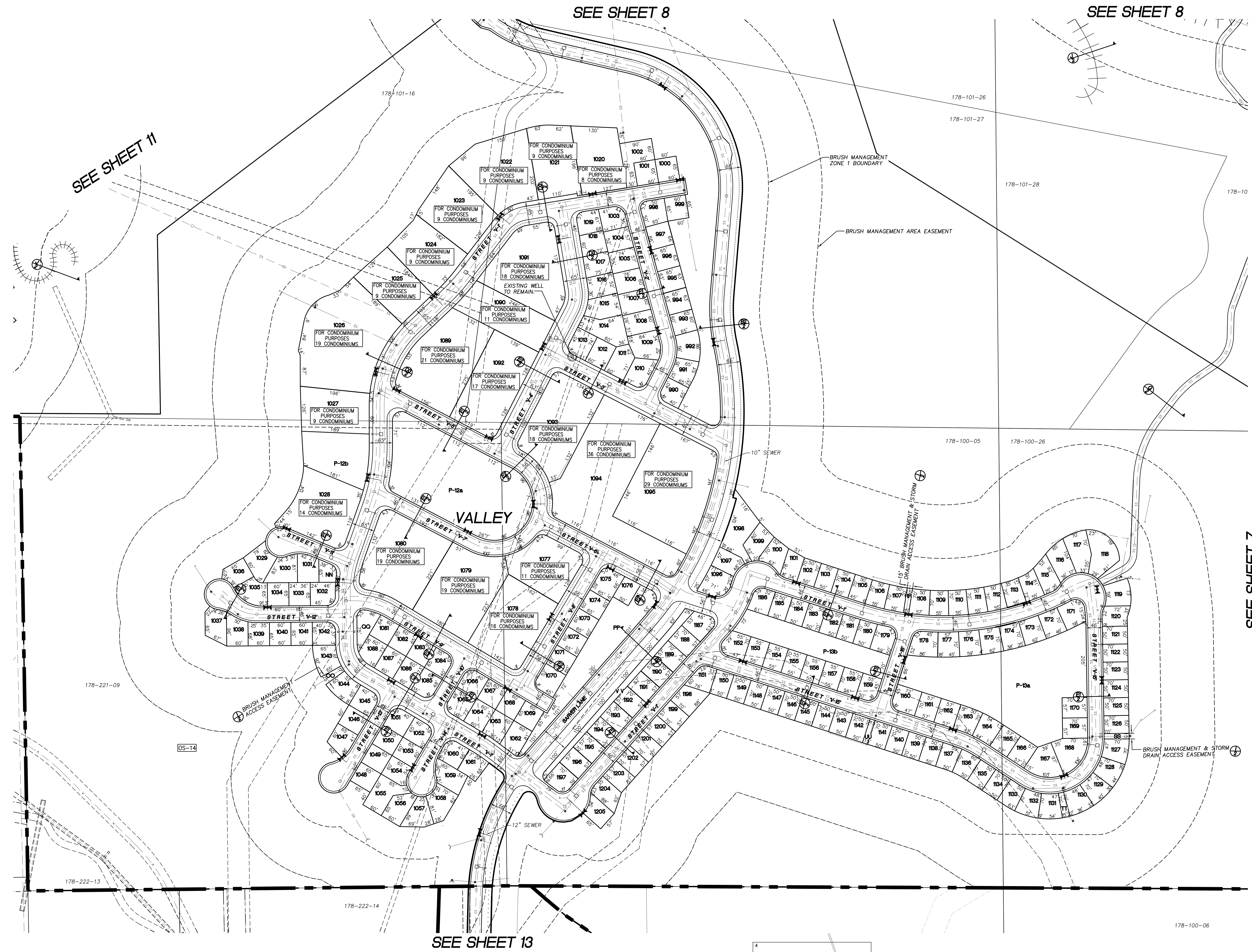
COUNTY OF SAN DIEGO TRACT TM

TENTATIVE MAP

NEWLAND SIERRA

NET LOT AREAS			NET LOT AREAS			NET LOT AREAS			NET LOT AREAS		
LOT	SQUARE FEET	ACRES	LOT	SQUARE FEET	ACRES	LOT	SQUARE FEET	ACRES	LOT	SQUARE FEET	ACRES
990	4,091	0.09	1051	4,091	0.09	1114	3,895	0.09	1166	3,990	0.09
991	4,516	0.10	1052	4,091	0.09	1115	4,655	0.11	1167	6,701	0.15
992	4,938	0.11	1053	3,900	0.09	1116	5,444	0.12	1168	6,818	0.16
993	3,900	0.09	1054	4,080	0.09	1117	6,441	0.15	1169	3,990	0.09
994	4,095	0.09	1055	6,871	0.16	1118	8,283	0.19	1170	3,990	0.09
995	4,095	0.09	1056	5,192	0.12	1119	4,809	0.11	1171	4,619	0.11
996	4,095	0.09	1057	5,075	0.12	1120	4,097	0.09	1172	4,172	0.10
997	4,290	0.10	1058	5,767	0.13	1121	3,484	0.08	1173	4,172	0.10
998	4,569	0.10	1059	5,289	0.12	1122	3,487	0.08	1174	4,172	0.10
999	3,900	0.09	1060	4,236	0.10	1123	3,490	0.08	1175	4,172	0.10
1000	3,900	0.09	1061	4,168	0.10	1124	3,493	0.08	1176	4,172	0.10
1001	3,900	0.09	1062	4,794	0.11	1125	3,496	0.08	1177	4,172	0.10
1002	7,350	0.17	1063	4,460	0.10	1126	3,468	0.08	1178	5,199	0.12
1003	4,291	0.10	1064	4,403	0.10	1127	4,118	0.09	1179	4,247	0.10
1004	4,337	0.10	1065	4,636	0.11	1128	4,102	0.09	1180	3,541	0.08
1005	4,494	0.10	1066	4,091	0.09	1129	4,102	0.09	1181	3,500	0.08
1006	4,648	0.11	1067	3,900	0.09	1130	4,102	0.09	1182	3,500	0.08
1007	4,802	0.11	1068	3,900	0.09	1131	4,102	0.09	1183	3,500	0.08
1008	4,956	0.11	1069	3,900	0.09	1132	4,102	0.09	1184	3,500	0.08
1009	5,896	0.14	1070	4,627	0.11	1133	3,958	0.09	1185	3,500	0.08
1010	4,989	0.11	1071	3,900	0.09	1134	3,500	0.08	1186	3,937	0.09
1011	5,102	0.12	1072	3,900	0.09	1135	3,500	0.08	1187	4,590	0.11
1012	4,464	0.10	1073	3,900	0.09	1136	3,856	0.09	1188	3,990	0.09
1013	4,490	0.10	1074	3,900	0.09	1137	3,803	0.09	1189	3,990	0.09
1014	7,883	0.18	1075	5,120	0.12	1138	3,500	0.08	1190	3,990	0.09
1015	5,582	0.13	1076	3,347	0.08	1139	3,500	0.08	1191	3,990	0.09
1016	4,677	0.11	1081	3,894	0.09	1140	3,500	0.08	1192	3,990	0.09
1017	4,407	0.10	1082	3,900	0.09	1141	3,500	0.08	1193	3,990	0.09
1018	4,188	0.10	1083	3,900	0.09	1142	3,500	0.08	1194	3,990	0.09
1019	4,081	0.09	1084	3,766	0.09	1143	3,500	0.08	1195	3,990	0.09
1029	5,719	0.13	1085	4,269	0.10	1144	3,500	0.08	1196	3,990	0.09
1030	5,671	0.13	1086	4,403	0.10	1145	3,500	0.08	1197	4,415	0.10
1031	4,533	0.10	1087	4,403	0.10	1146	3,500	0.08	1198	5,069	0.12
1032	4,419	0.10	1088	4,180	0.10	1147	3,500	0.08	1199	3,990	0.09
1033	3,900	0.09	1096	5,497	0.13	1148	3,500	0.08	1200	3,990	0.09
1034	3,900	0.09	1097	4,246	0.10	1149	3,500	0.08	1201	3,990	0.09
1035	5,212	0.12	1098	10,476	0.24	1150	3,500	0.08	1202	3,990	0.09
1036	4,247	0.10	1099	4,973	0.11	1151	4,449	0.10	1203	3,990	0.09
1037	5,266	0.12	1100	4,499	0.10	1152	4,584	0.11	1204	4,633	0.11
1038	4,768	0.11	1101	3,756	0.09	1153	3,850	0.09	1205	4,137	0.09
1039	3,921	0.09	1102	3,500	0.08	1154	3,850	0.09			
1040	3,900	0.09	1103	3,500	0.08	1155	3,850	0.09			
1041	3,900	0.09	1104	3,500	0.08	1156	3,850	0.09			
1042	4,088	0.09	1105	3,520	0.08	1157	3,850	0.09			
1043	4,972	0.11	1106	3,687	0.08	1158	3,850	0.09			
1044	4,786	0.11	1107	3,687	0.08	1159	3,717	0.09			
1045	4,091	0.09	1108	3,743	0.09	1160	4,906	0.11			
1046	3,900	0.09	1109	3,687	0.08	1161	3,990	0.09			
1047	4,407	0.10	1110	3,687	0.08	1162	3,990	0.09			
1048	3,900	0.09	1111	3,687	0.08	1163	4,309	0.10			
1049	3,900	0.09	1112	3,687	0.08	1164	4,332	0.10			
1050	3,900	0.09	1113	3,704	0.09	1165	3,990	0.09			

NET LOT AREAS				
LOT	SQUARE FEET	ACRES	COMMENTS	
1020	23,260	0.53	FOR 8 CONDOMINIUMS	
1021	24,697	0.57	FOR 9 CONDOMINIUMS	
1022	36,194	0.83	FOR 9 CONDOMINIUMS	
1023	28,203	0.65	FOR 9 CONDOMINIUMS	
1024	24,885	0.57	FOR 9 CONDOMINIUMS	
1025	22,711	0.52	FOR 9 CONDOMINIUMS	
1026	61,678	1.42	FOR 19 CONDOMINIUMS	
1027	22,827	0.52	FOR 9 CONDOMINIUMS	
1028	32,484	0.75	FOR 14 CONDOMINIUMS	
1077	24,836	0.57	FOR 11 CONDOMINIUMS	
1078	36,093	0.83	FOR 16 CONDOMINIUMS	
1079	42,057	0.97	FOR 19 CONDOMINIUMS	
1080	43,642	1.00	FOR 19 CONDOMINIUMS	
1089	46,517	1.07	FOR 21 CONDOMINIUMS	
1090	25,348	0.58	FOR 11 CONDOMINIUMS	
1091	41,284	0.95	FOR 18 CONDOMINIUMS	
1092	38,307	0.88	FOR 17 CONDOMINIUMS	
1093	39,668	0.91	FOR 18 CONDOMINIUMS	
1094	83,195	1.91	FOR 36 CONDOMINIUMS	
1095	62,725	1.44	FOR 29 CONDOMINIUMS	
P12a	86,984	2.00	PARK	
P12b	23,377	0.54	PARK	
P13a	95,115	2.18	PARK	
P13b	30,011	0.69	PARK	
NN	2,604	0.06	HOA LOT	
OO	1,365	0.03	HOA LOT	
PP	33,160	0.76	HOA LOT	
QQ	4,261	0.10	HOA LOT	
RR	1,050	0.02	HOA LOT	
SS	1,048	0.02	HOA LOT	
TT	1,291	0.03	HOA LOT	
UU	1,050	0.02	HOA LOT	
VV	10,350	0.24	HOA LOT	



ENGINEER OF WORK
 FUSCOE ENGINEERING
 6390 GREENWICH DRIVE, STE. 170
 SAN DIEGO, CA 92122
 (605)554-1500



SHEET 12 OF 14	
NO.	REVISION

FUSCOE ENGINEERING
 6390 Greenwich Drive, Suite 170
 San Diego, California 92122
 Tel 858-554-1500 • fax 858-597-0335
 www.fuscoe.com