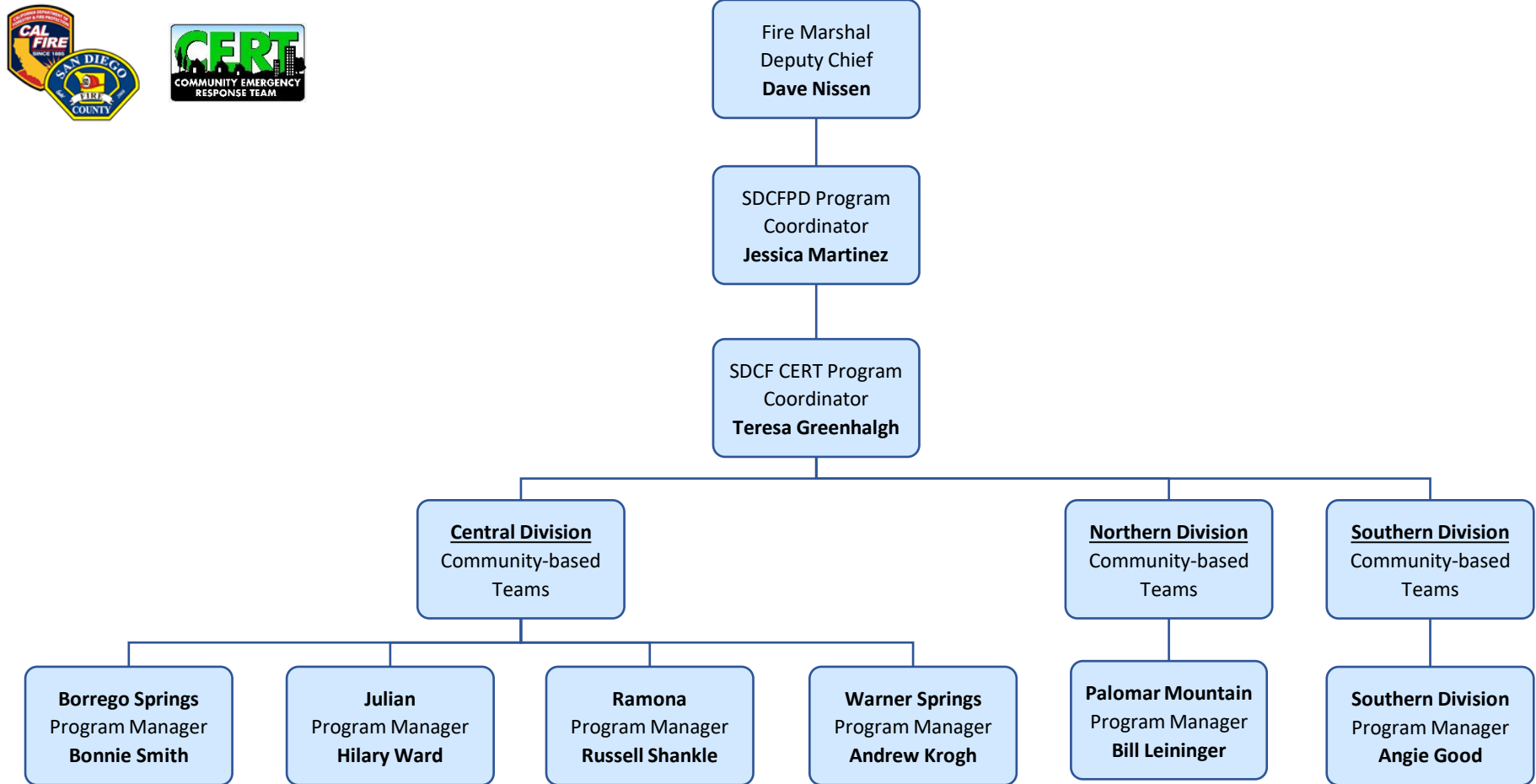


San Diego County Fire CERT Organization Chart



The San Diego County Fire Community Emergency Response Team (SDCF CET) Program is operated as one (1) Unit reflecting their Sponsoring Agency’s organization and is comprised of three (3) Divisions. The three (3) Divisions are Central, Northern and Southern. Community-based Teams are an integral part of each Division and are based on their geographic location. Each Community-based Team is managed by a trained volunteer CERT Program Manager who lives in the division’s jurisdiction.

The Mission of the SDCF CERT Program is to support the Operations Section of the San Diego County Fire Protection District. As an important community service, and to help build more resilient communities, the SDCF CERT Program volunteers promote emergency preparedness by offering free training in the unincorporated areas of San Diego County. They are Neighbors Helping Neighbors.