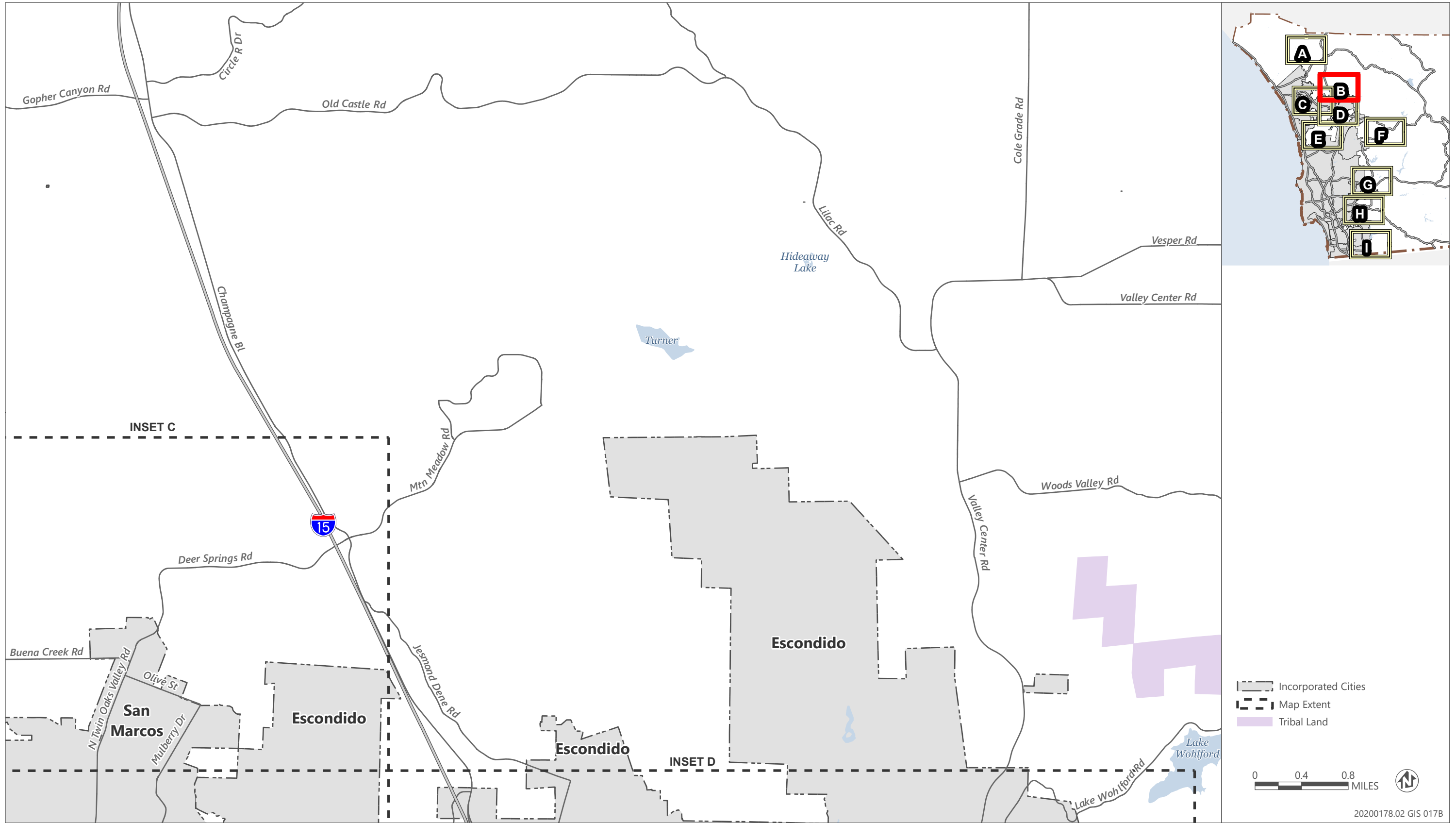


Sources: Data received from Fehr & Peers in 2023

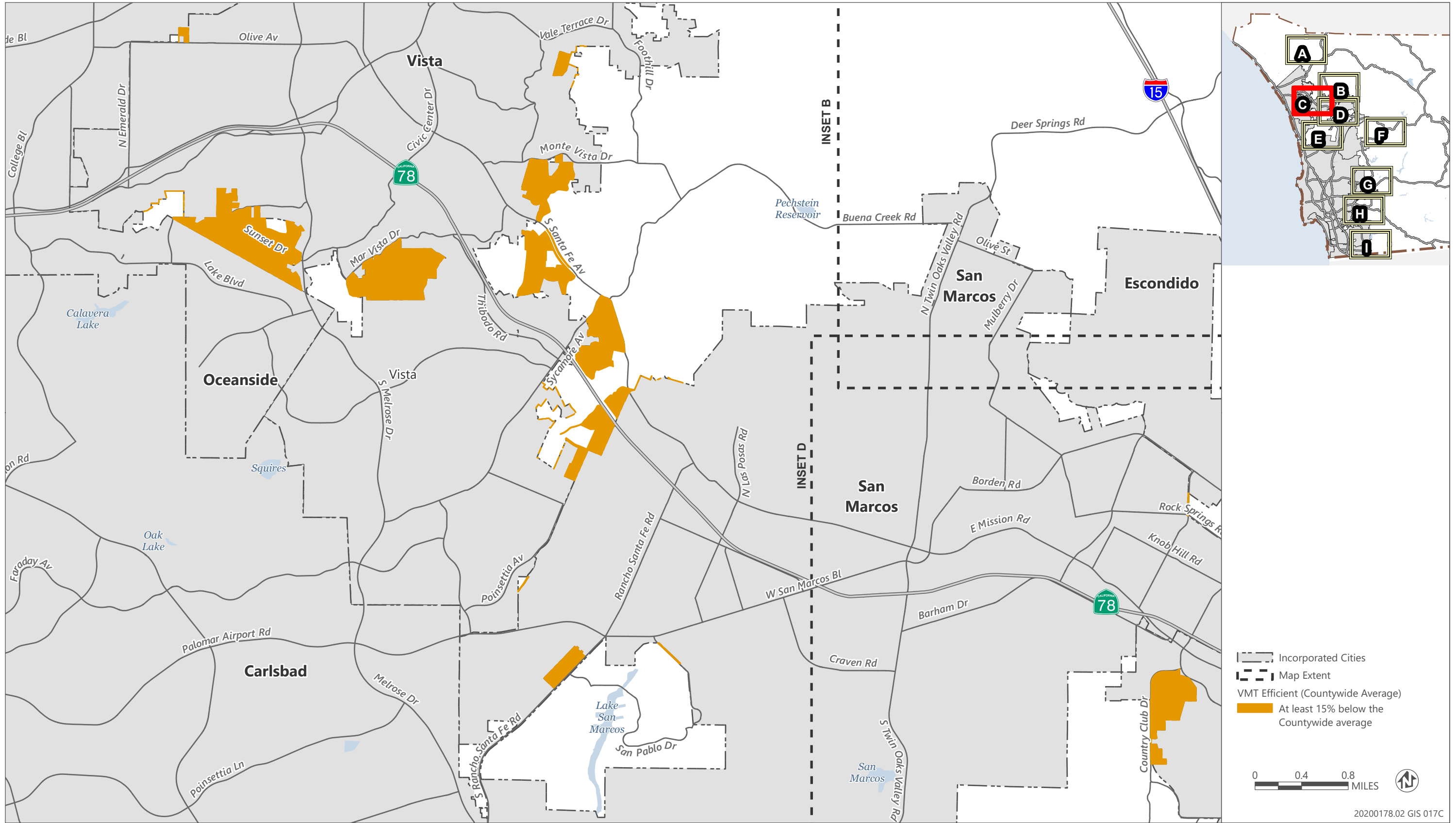
6/20/2023

VMT Efficient – Residential Projects – Inset A



Sources: Data received from Fehr & Peers in 2023

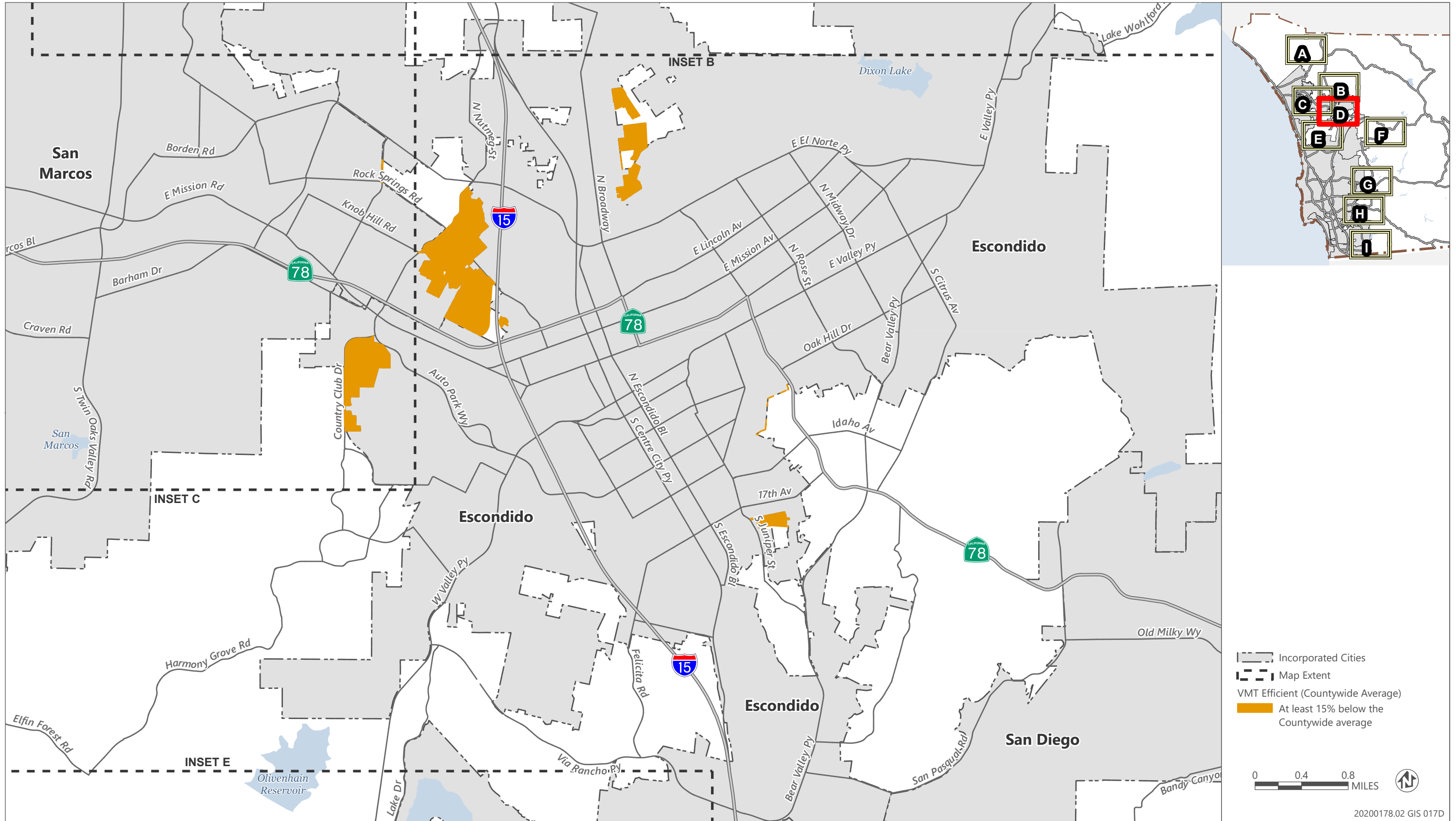
VMT Efficient – Residential Projects – Inset B



Sources: Data received from Fehr & Peers in 2023

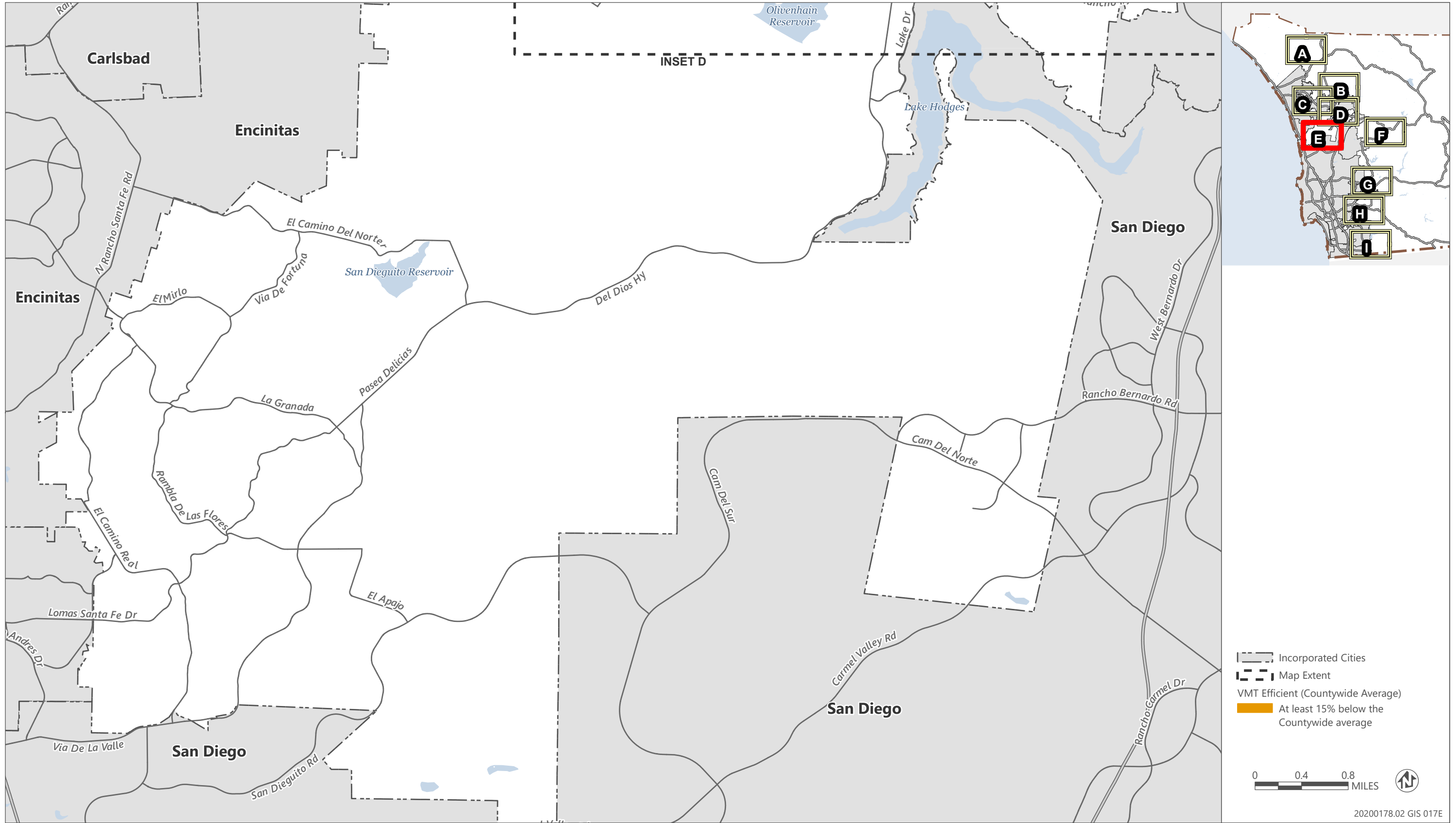
VMT Efficient – Residential Projects – Inset C

20200178.02 GIS 017C



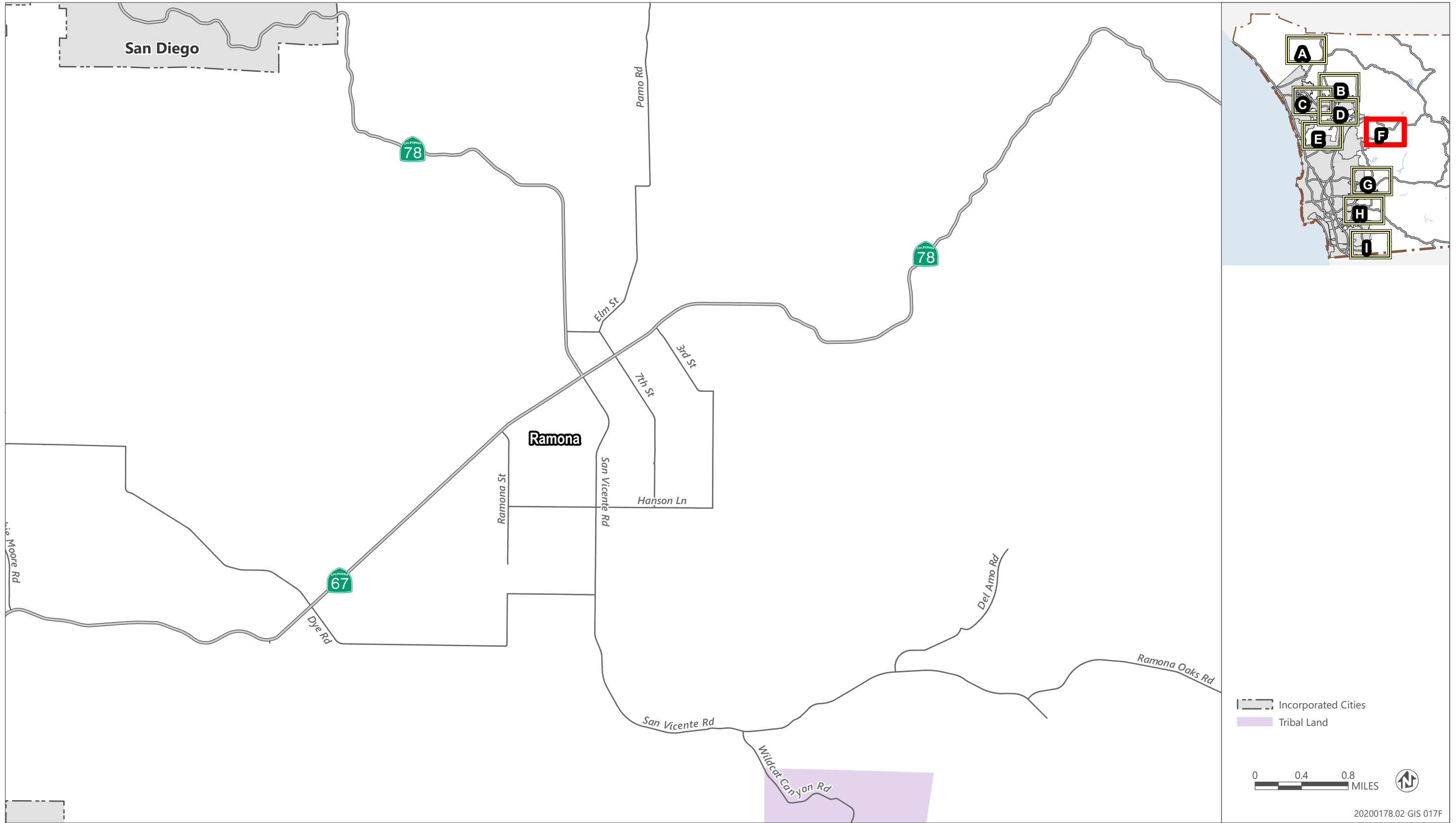
Sources: Data received from Fehr & Peers in 2023

VMT Efficient – Residential Projects – Inset D



Sources: Data received from Fehr & Peers in 2023

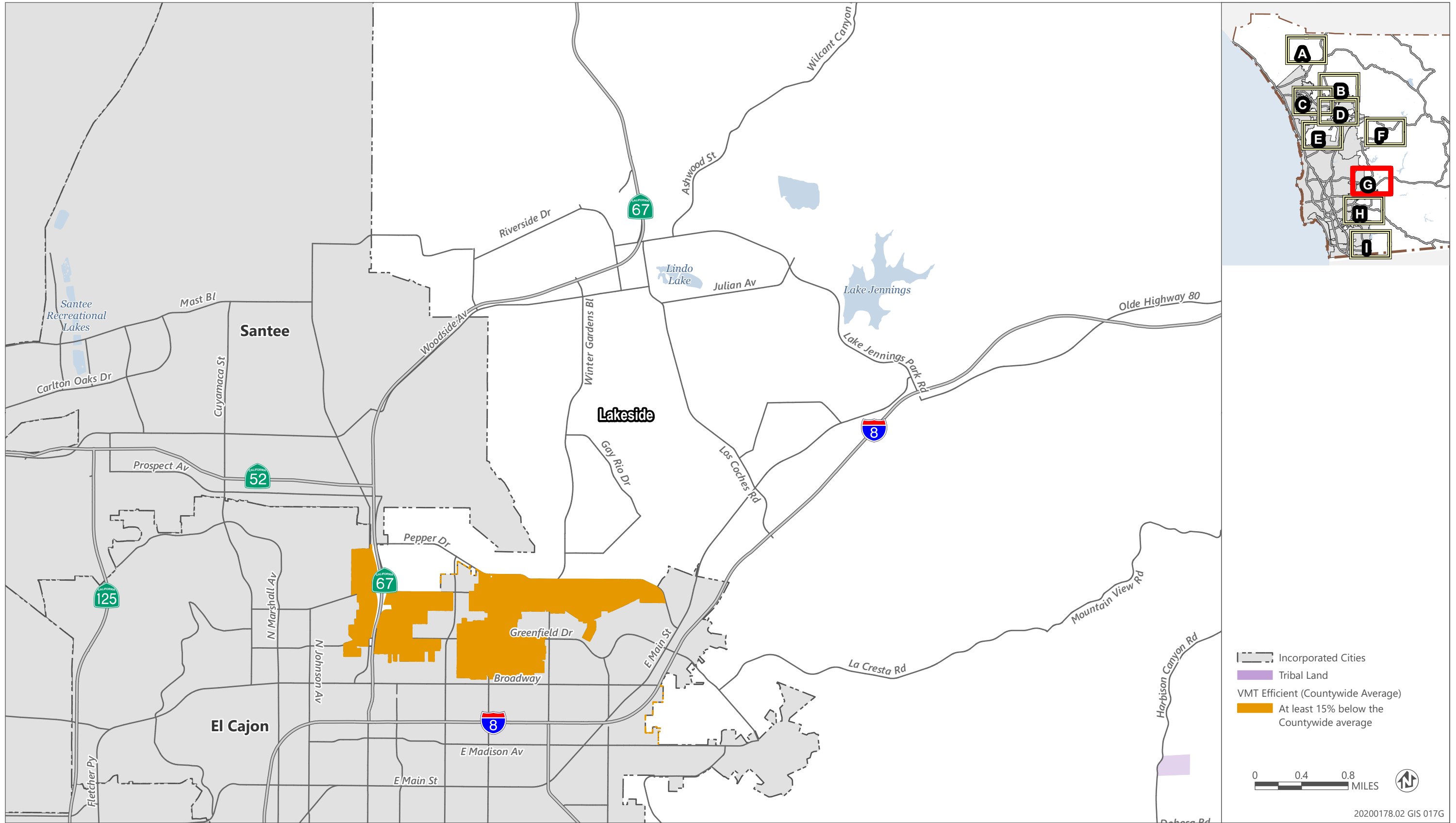
VMT Efficient – Residential Projects – Inset E



Sources: Data received from Fehr & Peers in 2023

VMT Efficient – Residential Projects – Inset F

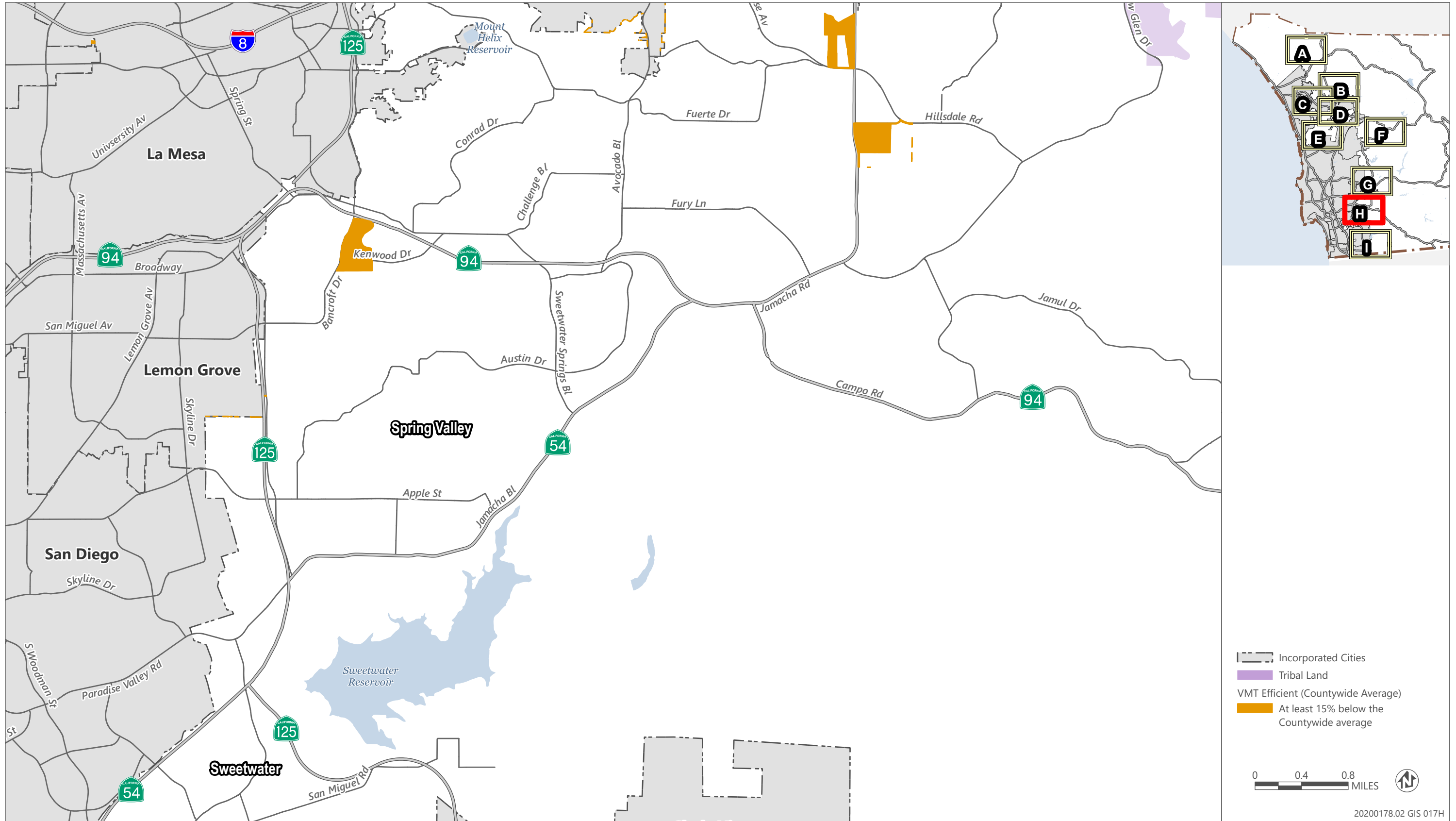
20200178.02 GIS 017F



Sources: Data received from Fehr & Peers in 2023

VMT Efficient – Residential Projects – Inset G

20200178.02 GIS 017G



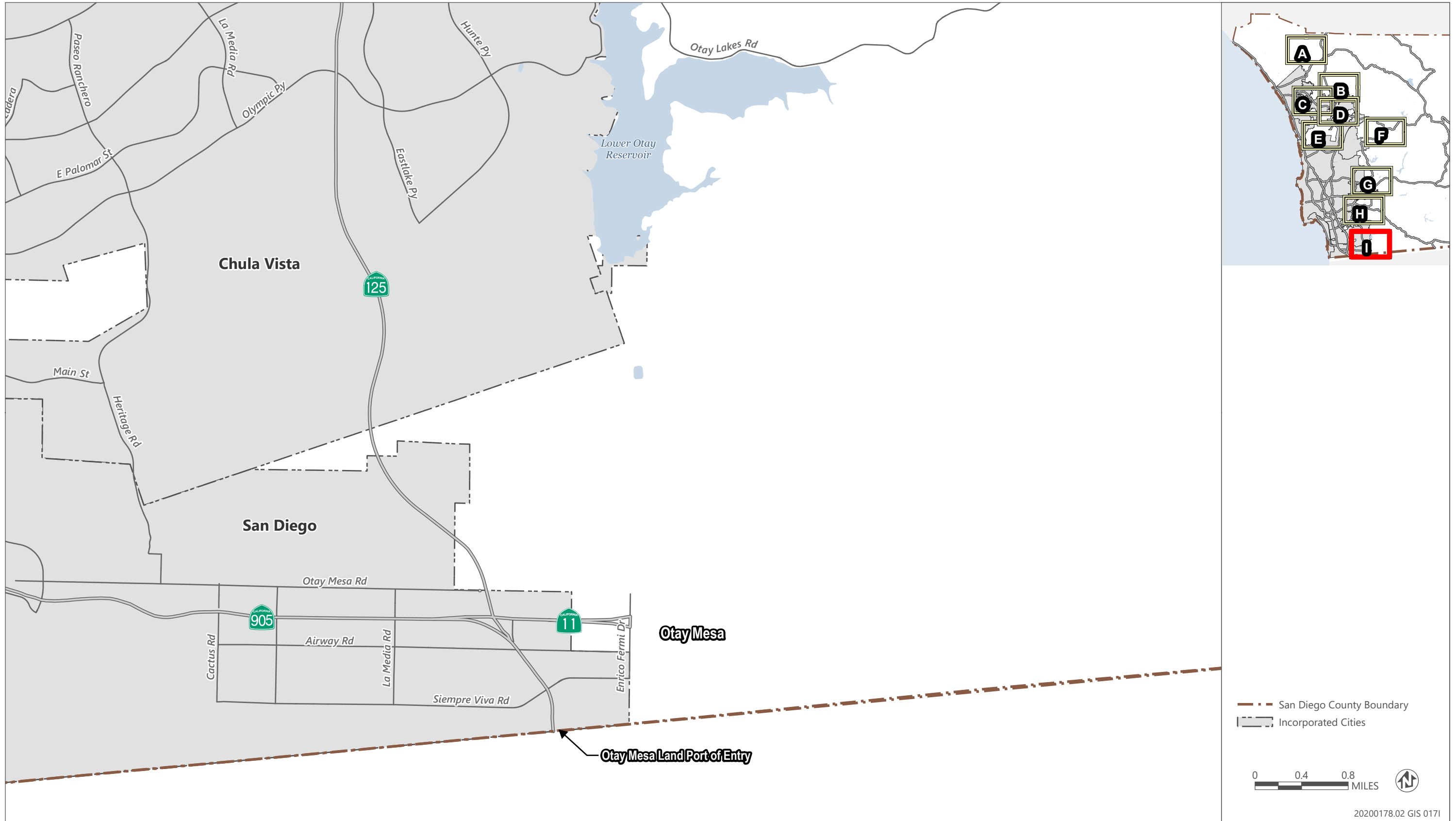
Sources: Data received from Fehr & Peers in 2023

6/20/2023

VMT Efficient – Residential Projects – Inset H

20200178.02 GIS 017H





Sources: Data received from Fehr & Peers in 2023

6/20/2023