



Welcome

Agriculture & Conservation Emissions Sector Workshop

Climate Action Plan Update

July 19, 2022



@SDCoSustainable



@SDCountySustainable



@SDCountySustainable



Interpretación simultánea en español

Si necesita interpretación simultánea:

Presione "Interpretation"
y seleccione "Spanish"



Mute

Chat

Raise Hand

Q&A

English

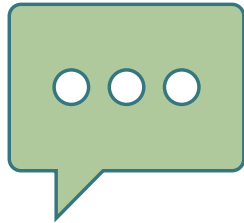
Leave



How to Participate?

?

Zoom Comments/Questions? Send message using the Q&A feature.



Submit Comments/ Questions
During the Meeting



Having Issues With Zoom
During The Meeting?

Use the Q&A feature at the bottom
of your screen



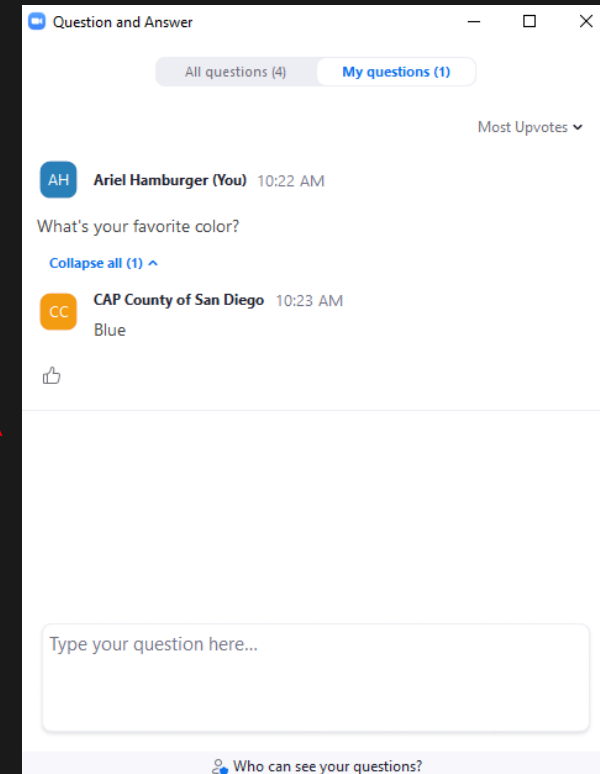
Zoom Meeting Controls

Desktop

?

Zoom Comments/Questions? Send messages using the Q&A feature.

Use Q&A window
to send
comments/
questions



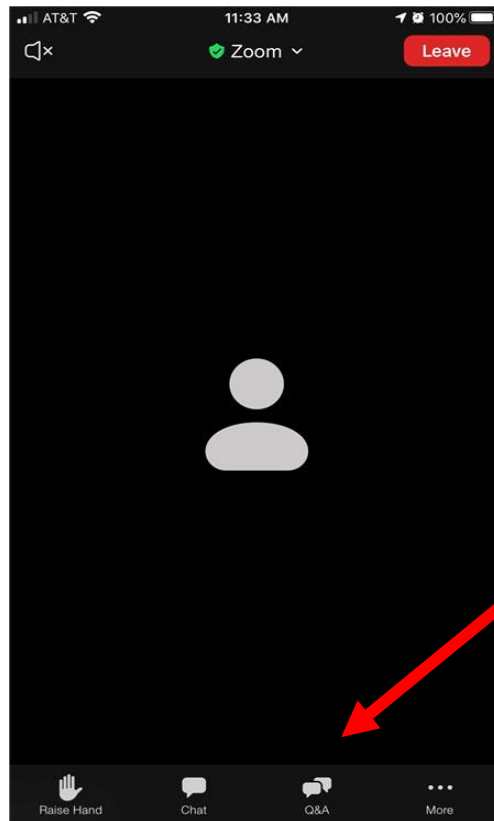


Zoom Meeting Controls

Mobile

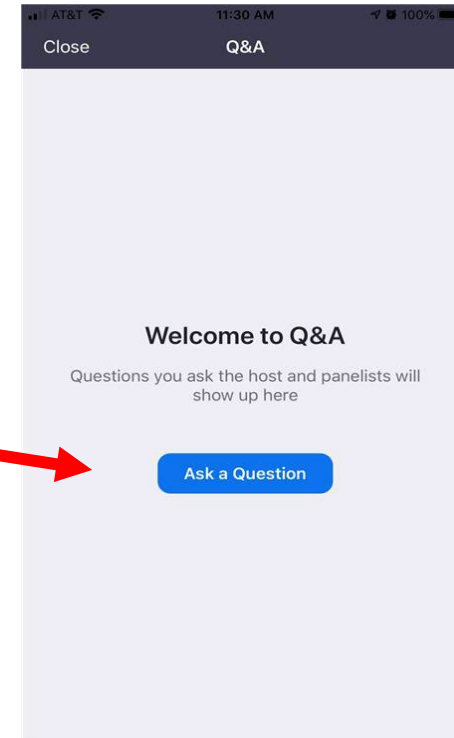
?

Zoom Comments/Questions? Send message using the Q&A feature.



First click,
“More”

Access the
Q&A window
to send
comments/
questions





MEETING TOPICS

- ▶ Workshop logistics
- ▶ Recap: Agriculture & Conservation Emissions
- ▶ Draft equitable, net-zero vision
- ▶ Strategies and measures to reach the draft vision



Why

We Are Here



Interactive Polls

Poll Everywhere

?

Zoom Comments/Questions? Send message using Chat feature



To Participate:

▶ Scan QR Code

OR:

▶ Open pollev.com/SDCoSustainable681 in your browser (Chrome, Firefox, or Edge)

▶ Enter your name or click Skip

▶ Wait to be re-directed to the event



Welcome! What brought you here today?

I am a...

resident of the unincorporated county

resident of an incorporated city (e.g., City of San Diego, Poway, Encinitas...)

resident of a Native American reservation

resident of another area (outside of SD County, on a military base, etc.)

agricultural professional

community-based organization representative

County employee

other



What is the Climate Action Plan Update





Purpose of Your Feedback

Summer 2021 - Winter 2022

Spring - Summer 2022

Winter 2022 - Spring 2023



Vision
Statements



How can we
get there?

Strategies and
Measures



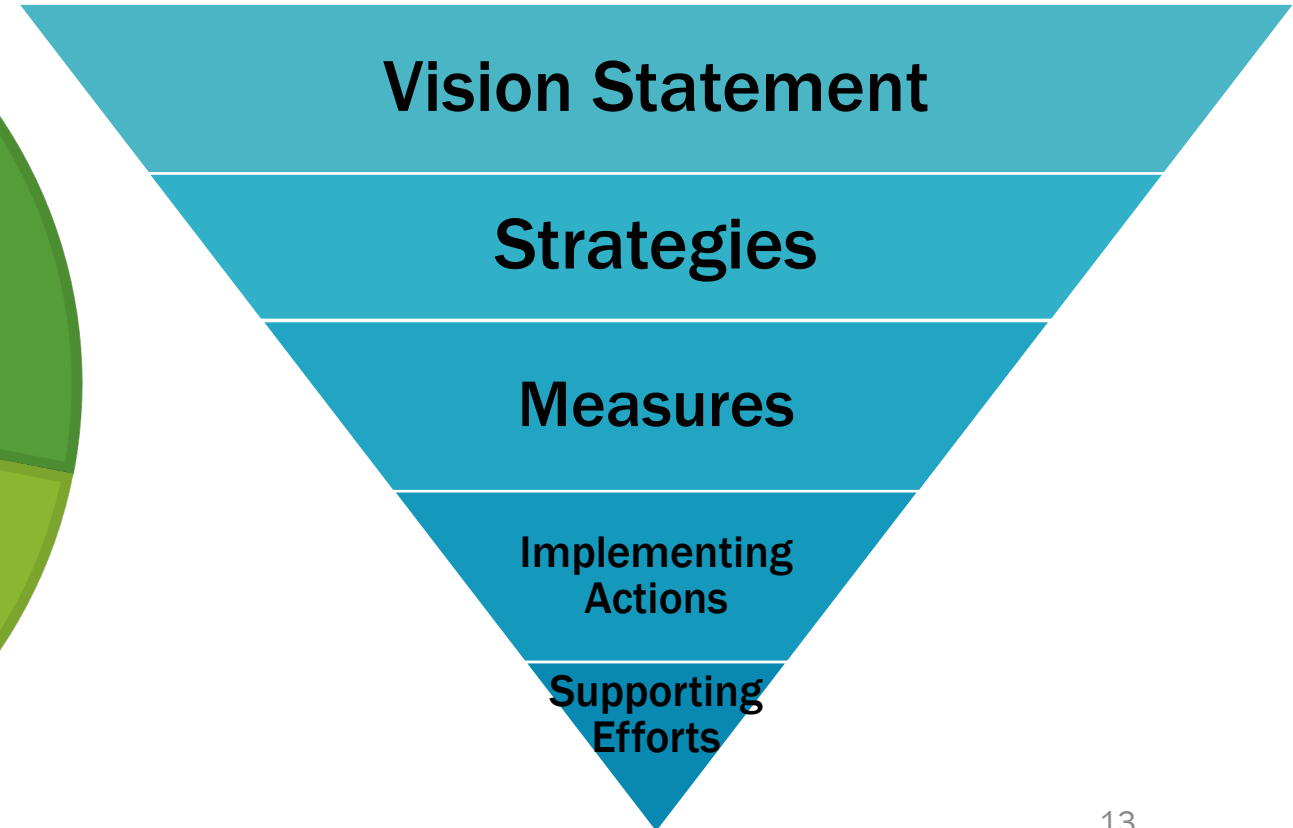
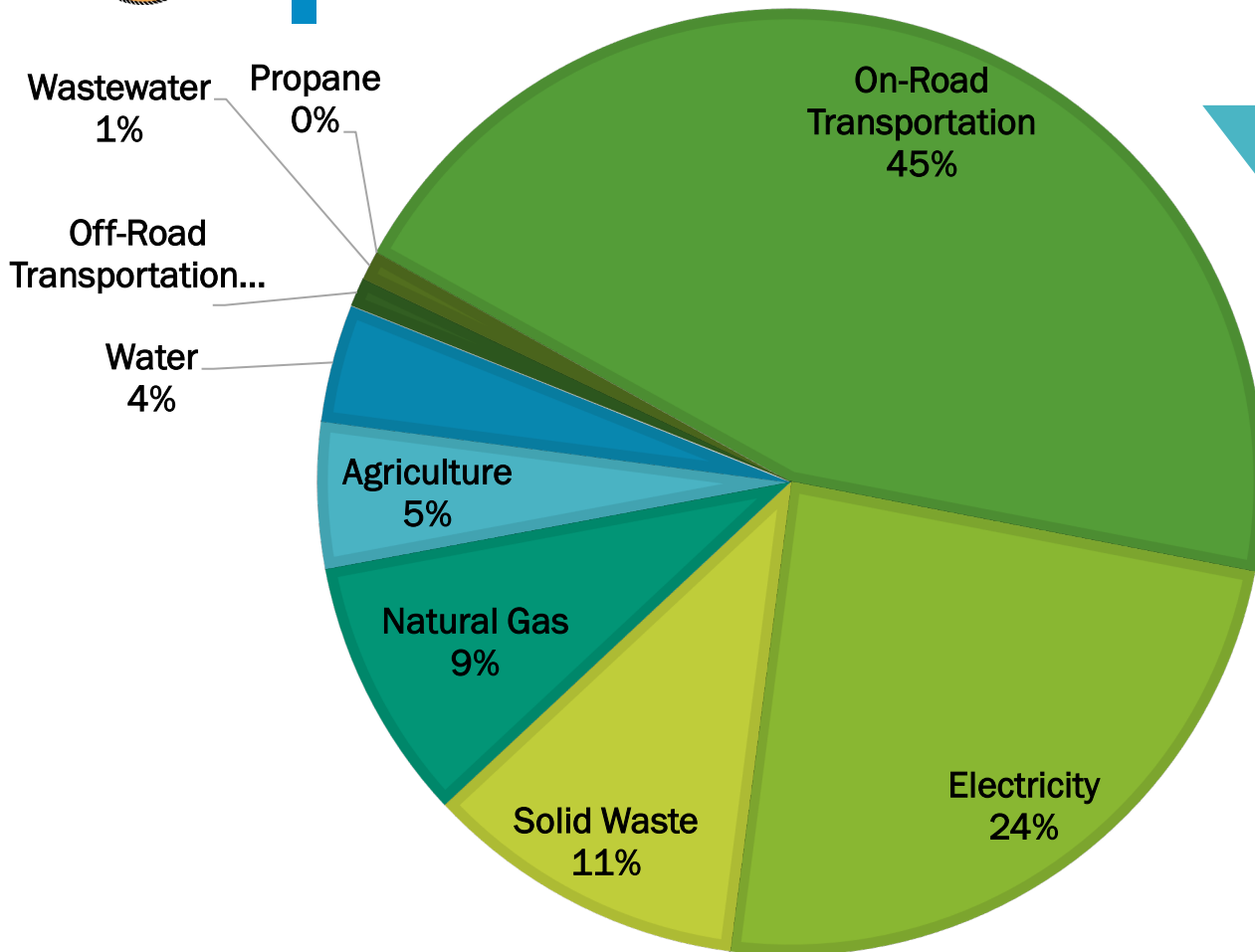
What
matters
to you
most?

Draft CAP
Update



GHG Emissions And Our Approach

COUNTY GHG EMISSIONS BY SECTOR (2014)

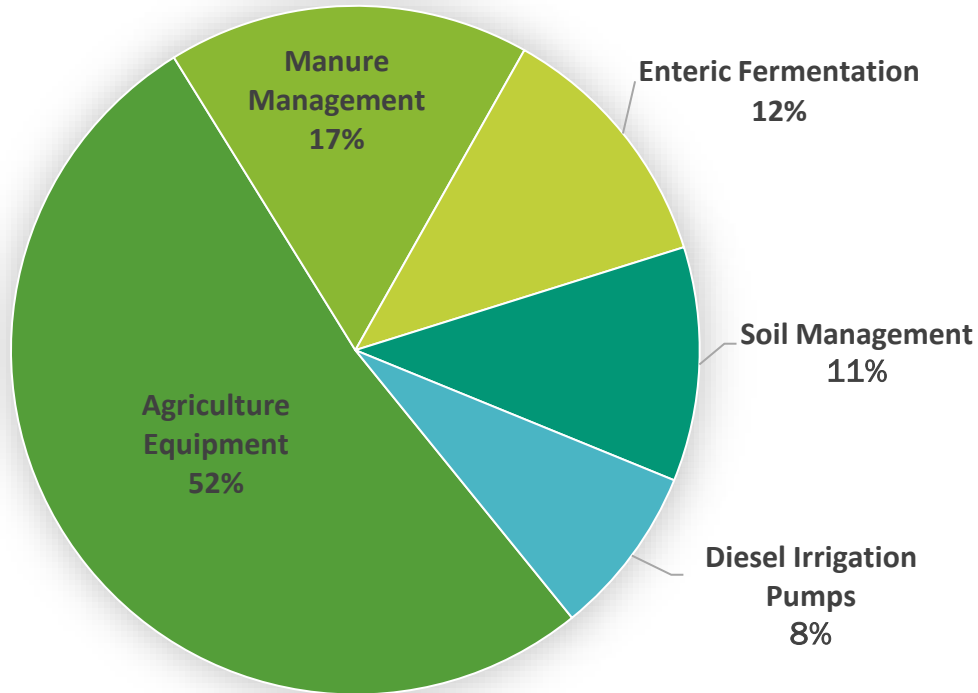




Understanding Agriculture and Conservation Emissions

2018 CAP Emissions Inventory

Breakdown of Emission Sources from the Agriculture Sector (2014)



CAP Update Emissions Inventory

Emission Sources

- Ag Equipment
- Manure Management
- Enteric Fermentation
- Soil Management
- Diesel Irrigation Pumps

Emission Sinks (Carbon Storage)

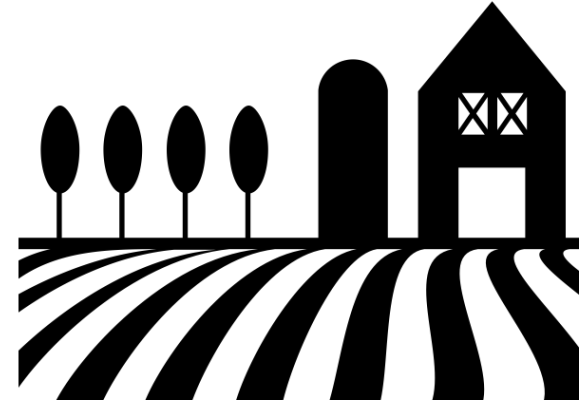
- Soil
- Plants/Trees
- Crops



Where emissions come from Agriculture and Conservation



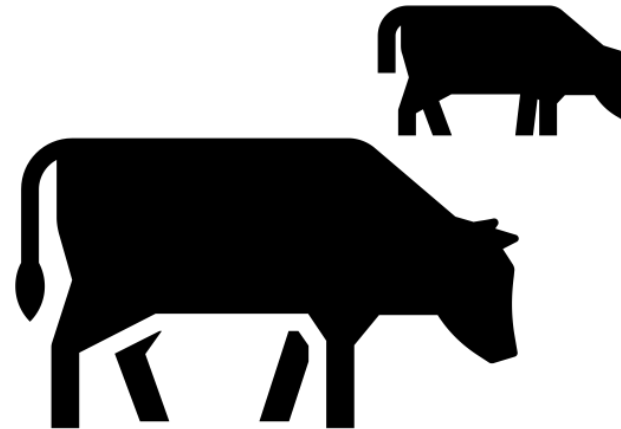
Manure Management



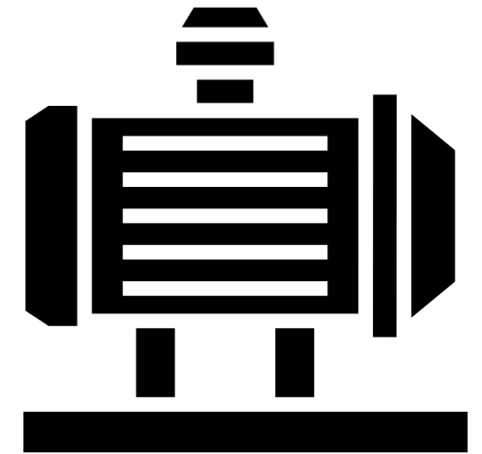
Soil Management



Agricultural Equipment



Enteric Fermentation



Diesel Irrigation Pumps



What we heard...

- ▶ Carbon farming and sequestration
- ▶ Energy use in agriculture (electrification)
- ▶ Native and local practices
- ▶ Water efficient agricultural practices
- ▶ Labor and environmental justice
- ▶ Training and education



Draft Vision Statement

Natural and agricultural lands are preserved to capture carbon, support the local food and farming community, and provide access to healthy outdoor spaces.

Did we get it right? Does the vision statement, "Natural and agricultural lands are preserved to capture carbon, support the local food and farming community, and provide access to healthy outdoor spaces" reflect your prior comments?

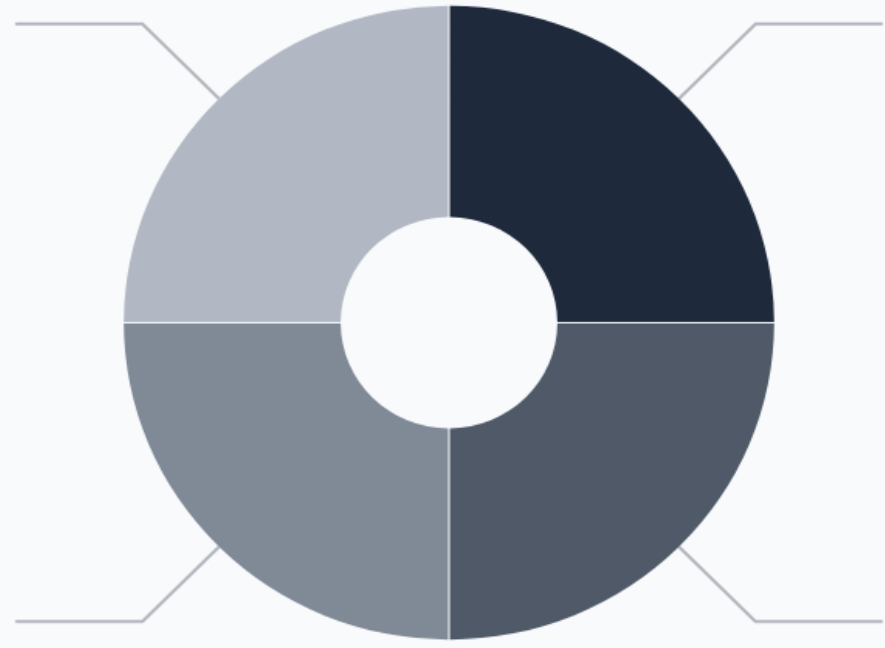
Yes, this Vision Statement ref... Almost There Not Quite No, this Vision Statement does...

No, this Vision Statement does not reflect my prior comments

Yes, this Vision Statement reflects my prior comments

Not Quite

Almost There

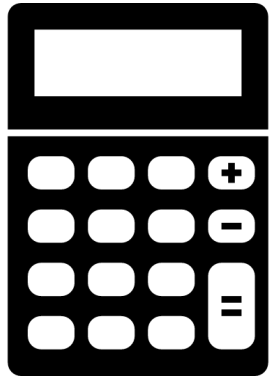




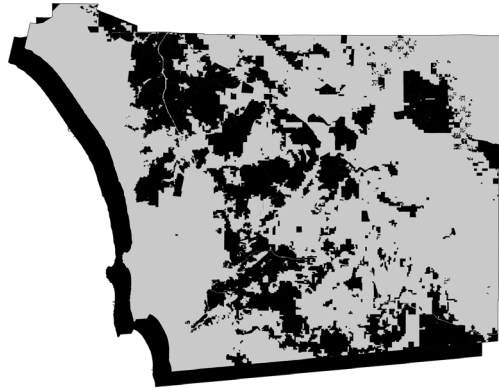
For those of you who think we're almost or not quite there, what else do you think should be included?



Strategies & Measures to reach our shared vision



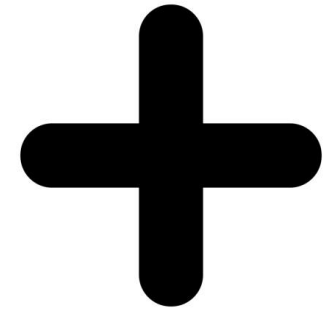
Quantifiable



Within Jurisdiction



Monitorable



Additional



Why is reducing emissions in the Agriculture and Conservation sector important to you?



Agriculture & Conservation Emissions Sector Strategy

Strategy #1: Increase carbon sequestration

AGRICULTURE & CONSERVATION

Draft Measure #1:
Acquire open space
conservation lands
to increase carbon
sequestration
benefits.



- ▶ Acquire open space conservation lands consistent with Multiple Species Conservation Program requirements

AGRICULTURE & CONSERVATION

Draft Measure #2:
Develop and implement
a **tree canopy
assessment** and
program to plant trees
within the
unincorporated area,
with priority for
**underserved
communities.**



- ▶ Expand the existing tree planting program for public right-of-way and public lands
- ▶ Increase tree canopy on private property where possible

AGRICULTURE & CONSERVATION

Draft Measure #3:

Promote and
prioritize tree
preservation and
green infrastructure
in residential and
non-residential
development, and in
County projects.



- ▶ Amend ordinances to update tree planting requirements for new development and retrofits
- ▶ Amend ordinances to prioritize green infrastructure
- ▶ Identify green infrastructure opportunities in the Capital Improvement Program





What are other actions the County could take to sequester carbon?



Top



Agriculture & Conservation Emissions Sector Strategy

Strategy #2: Preserve agricultural land

AGRICULTURE & CONSERVATION

Draft Measure #1:
Avoid conversion of agricultural lands to developed uses through the placement of easements.



- ▶ Implement expanded Purchase of Agriculture Conservation Easement Program
- ▶ Explore development of agricultural land trust, led by partner organizations



AGRICULTURE & CONSERVATION

Draft Measure #2:

Create a **food sourcing strategy** for County operations that prioritizes local, equitable, and sustainable food suppliers.



- ▶ Develop and adopt a procurement policy for all food purchased by the County



How interested are you in these actions (easements, food sourcing strategy) for the County to preserve agricultural lands?

Very interested

Somewhat
interested

Neutral

Not really
interested

Not interested
at all



Agriculture & Conservation Emissions Sector Strategy

**Strategy #3: Support climate friendly
farming practices**

AGRICULTURE & CONSERVATION

Draft Measure #1:
Incentivize the use of
feed additives and/or
improve forage quality
to reduce emissions
from enteric
fermentation.



- ▶ Incentivize farmers to improve forage quality in pastures and use feed additives
- ▶ Identify grant sources to fund demonstration projects

AGRICULTURE & CONSERVATION

Draft Measure #2:
Increase **energy efficiency** of agricultural operations through **retrofits and equipment conversion.**



- ▶ Use LED grow lights for floriculture
- ▶ Support and expand the Streamlined Ag Efficiency Program
- ▶ Incentivize renewable diesel
- ▶ Incentivize replacement of gas- and diesel-powered ag equipment



AGRICULTURE & CONSERVATION

Draft Measure #3:
Work with regional partners to develop a **Carbon Farming Program** to incentivize the use of climate friendly practices in local agriculture.



- ▶ Develop Carbon Farming Program
- ▶ Consider expansion of Purchase of Agriculture Conservation Easement program to incentivize carbon farming

AGRICULTURE & CONSERVATION

Draft Measure #4:
Work with regional partners to **incentivize** nutrient management techniques to **reduce synthetic fertilizer use.**



- ▶ Develop a program for farmers to reduce use of synthetic fertilizers



Of the measures relating to climate farming practices, which one is most exciting to you?

Strategy #3: Support climate friendly farming practices



Draft Measure #1:
Incentivize the use of **feed additives and/or improve forage quality** to reduce emissions from enteric fermentation



Draft Measure #3:
Work with regional partners to develop a **Carbon Farming Program** to incentivize the use of climate friendly practices in local agriculture.



Draft Measure #2:
Increase **energy efficiency** of agricultural operations through **retrofits and equipment conversion**.



Draft Measure #4:
Work with regional partners to **incentivize** nutrient management techniques to **reduce synthetic fertilizer** use.



Are there any other Agriculture and Conservation strategies, measures, or actions the County should consider?

AG & CONSERVATION

Co-Benefits: additional, beneficial effects that will result from implementation of CAP strategies and measures.



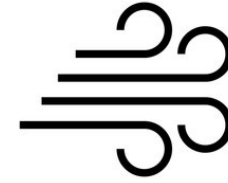
- ▶ Improve community health
- ▶ Conserve farmland
- ▶ Save money on utility bills
- ▶ Save public tax dollars
- ▶ Improve air quality
- ▶ Conserve water
- ▶ Increase energy security/resilience
- ▶ Conserve habitat
- ▶ Create green jobs
- ▶ Reduce noise
- ▶ Promote environmental and social justice
- ▶ Improve access to electric vehicles
- ▶ Improve walking, biking, rolling, and transit options

AG & CONSERVATION

Co-Benefits



- ▶ What you said: “Buy back for gas farm and lawn equipment”
 - ▶ Why this might be important to you: **improve air quality**



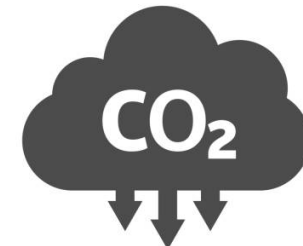
- ▶ What you said: “Planting more trees in urban areas”
 - ▶ Why this might be important to you: **improve community health**



- ▶ What you said: “Training programs in organic land management”
 - ▶ Why this might be important to you: **create green jobs**



- ▶ What you said: ”Extra incentives for carbon farmed food sold in communities of concern”
 - ▶ Why this might be important to you: **promote environmental and social justice**



Given what we just discussed, which co-benefits are important to you? Select all that apply

- Improve community health
- Conserve farmland
- Save money on utility bills
- Save public tax dollars
- Improve air quality
- Increase energy security/resilience
- Conserve water
- Conserve habitat
- Create green jobs
- Reduce noise
- Promote environmental and social justice
- Improve access to electric vehicles
- Improve walking, biking, rolling, and transit options

Given the following list, what other criteria are important to you when evaluating measures? Rank the following:

Support co-benefits

Support equity and environmental justice

Reduce GHG emissions quickly

Reduce costs to residents and businesses

Save taxpayer money



CAP Update Measures

What comes next?

Community Feedback

Equity Considerations

Co-Benefits



Legal Considerations

GHG Reduction Potential

Technical Constraints

Fiscal Considerations



Public Comment



WE WANT TO HEAR FROM
YOU!



PLEASE SHARE
ADDITIONAL COMMENTS.



ASK ANY QUESTIONS.

Check out our webpage: bit.ly/CAP_Update



Providing comments by phone

- ▶ Press Star (*) 9 to indicate you would like to speak
- ▶ Listen for the message: “The host would like you to unmute your microphone. You can press Star (*) 6 to unmute”
- ▶ When you are done with your comment, please press Star (*) 6 to re-mute



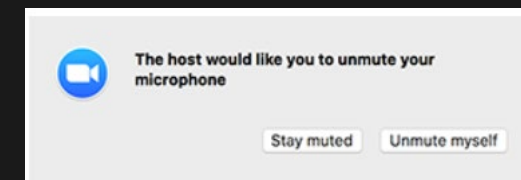
Providing comments by Zoom

?

Zoom Comments/Questions? Send message using the Q&A feature.

Select Raise Hand if you wish to be added to the queue to speak

Example of host would like you to unmute



Mute

Chat

Raise Hand

Q&A

English

Leave



Public Comment



WE WANT TO HEAR FROM
YOU!



PLEASE SHARE
ADDITIONAL COMMENTS.



ASK ANY QUESTIONS.

Check out our webpage: bit.ly/CAP_Update

How to Get Involved



- ▶ Sign up for project updates
- ▶ Attend a virtual or in-person meeting – details will be shared via project updates
- ▶ Check out our webpage:
bit.ly/CAP_Update
- ▶ Email us: CAP@sdcounty.ca.gov
- ▶ Follow on social media:



@SDCoSustainable



@SDCountySustainable



@SDCountySustainable

How to Get Involved: More Workshops



Later this summer:



Built Environment and
Transportation

Regional Decarbonization Framework



Equity-Driven Tree Planting Program

- ▶ Develop equity-driven tree canopy assessment
- ▶ Identify priority sites for tree planting
- ▶ Reduce urban heat island effect and increase carbon sequestration



Pilot Carbon Farming Program

- ▶ Research carbon farming best practices
- ▶ Analyze incentive opportunities for carbon farming
- ▶ Develop carbon farming program plan

How to Get Involved: *Other Projects*



Organic Materials Ordinance Update



Native Plant Landscaping Policy Options



Accelerate to Zero Initiative



Sustainable Land Use Framework



@SDCoSustainable



@SDCountySustainable



@SDCountySustainable



THANK YOU FOR JOINING!

Agriculture & Conservation Emissions Sector Workshop

Climate Action Plan Update

July 19, 2022



@SDCoSustainable



@SDCountySustainable



@SDCountySustainable