



Climate Action Plan Update

May 24, 2023



@SDCoSustainable



@SDCountySustainable



@SDCountySustainable



Interpretación simultánea

En español

Si necesita interpretación simultánea:

Presione "Interpretation" y
seleccione "Spanish"



Mute

Chat

Raise Hand

Q&A

EN
English

Leave



MEETING TOPICS

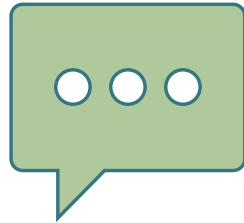
- ▶ Logistics
- ▶ Overview of CAP Update
- ▶ CAP Update Project Components
- ▶ CAP Document Structure
- ▶ Emissions Reduction Sectors
- ▶ Breakout Rooms
- ▶ Implementation Components
- ▶ Next Steps



How to Participate?

?

Zoom Comments/Questions? Send message using the Q&A feature.



Submit Comments/ Questions
During the Meeting



Having Issues With Zoom
During The Meeting?

Use the Q&A feature at the bottom
of your screen



Interactive Polls

Poll Everywhere



Zoom Comments/Questions? Send message using Chat feature



To Participate:

▶ Scan QR Code

OR:

▶ Open pollev.com/SDCoSustainable681 in your browser (Chrome, Firefox, or Edge)

▶ Enter your name or click Skip

▶ Wait to be re-directed to the event



Who is in The room?





Who is in The room? – Poll Question

I am a...

Resident of the unincorporated county

Representative of an environmental
group

Representative of an industry group
(e.g., labor, building, etc.)

Representative of a community-based
organization

County employee

Other (e.g., local jurisdiction staff,
consultant staff, etc.)



What is the Climate Action Plan (CAP)





The CAP And Your Community





Project Components



**GREENHOUSE
GAS INVENTORY**



**GREENHOUSE
GAS REDUCTION
TARGETS**



**GREENHOUSE
GAS REDUCTION
MEASURES**



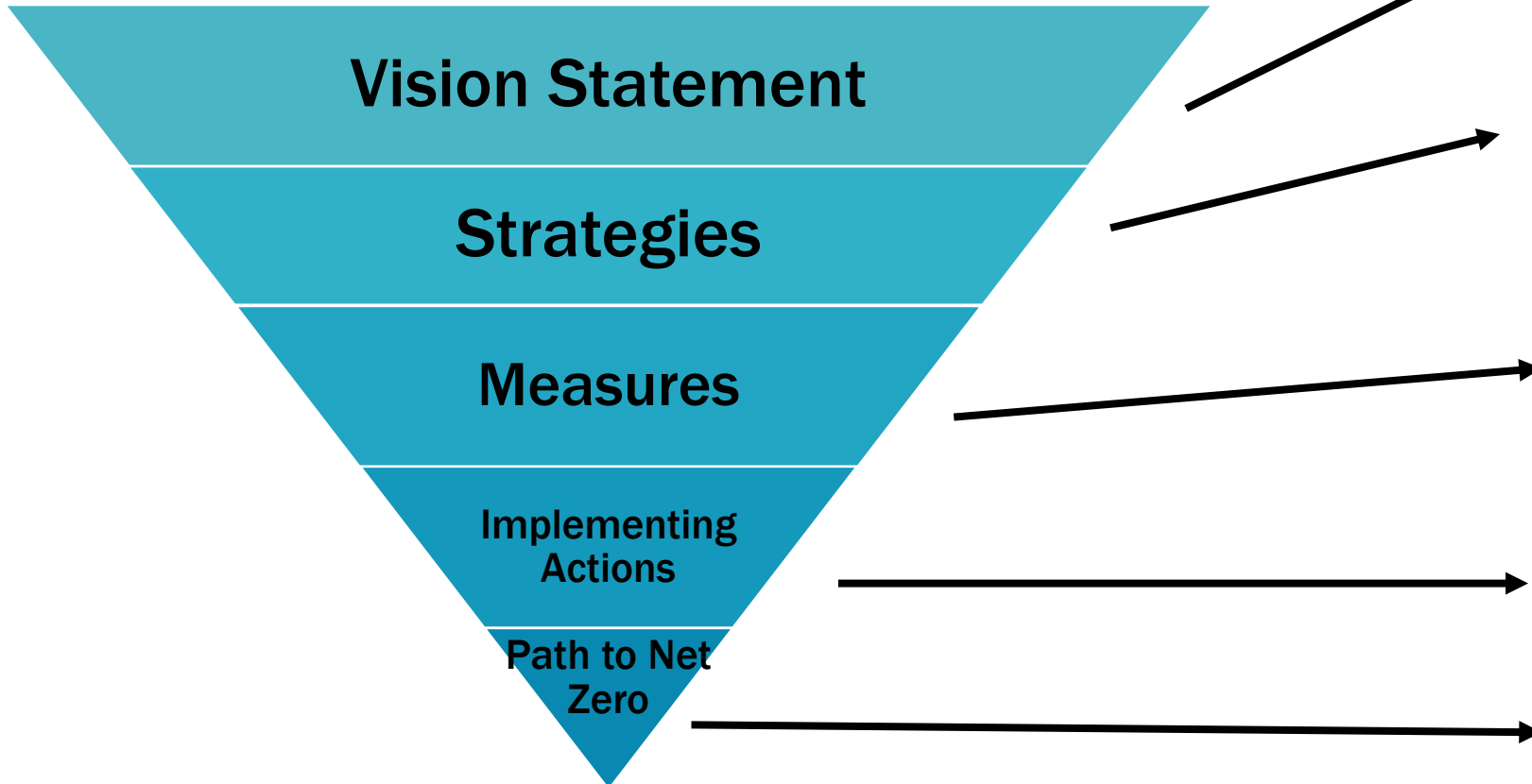
**ENVIRONMENTAL
DOCUMENT**



**SMART GROWTH
ALTERNATIVE**



Sectors In Detail



SOLID WASTE



ENERGY



**WATER &
WASTEWATER**



**AGRICULTURE &
CONSERVATION**



**BUILT ENVIRONMENT &
TRANSPORTATION**



Sectors In Detail

Vision Statement

Strategies

Measures

**Implementing
Actions**

**Path to Net
Zero**

Natural and agricultural lands are preserved to capture carbon, support the local food and farming community, and provide access to healthy outdoor spaces.

Preserve natural lands and improve land management practices to protect habitat and increase carbon storage.

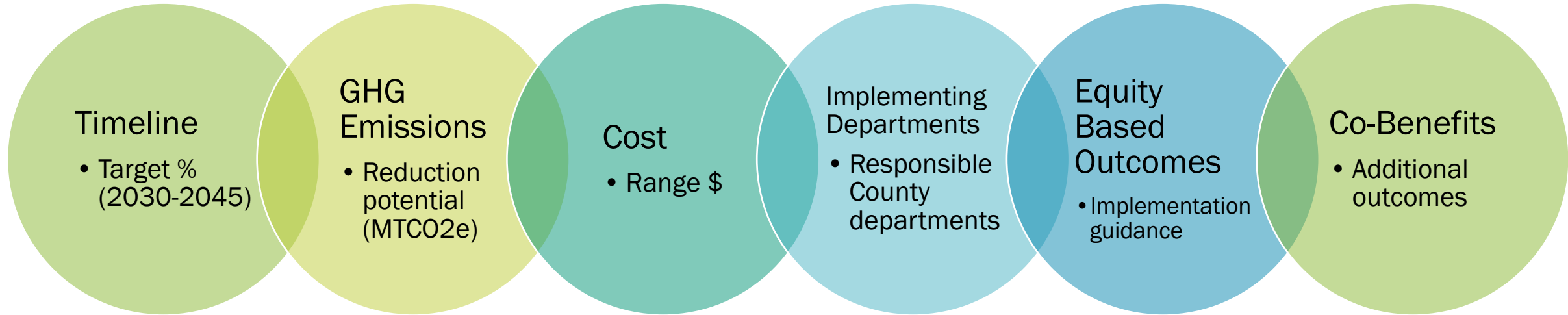
Acquire and manage conservation lands to preserve natural lands and maximize carbon storage potential.

Acquire (7,700-11,000) acres of conservation lands by 2030 to preserve land in perpetuity.

Partner with Tribal Governments on land management practices.



Measures In Detail





CAP Measures And Your Community

Acquire and manage conservation lands to preserve natural lands and maximize carbon storage potential.





CAP Measures

And Your Community – Poll Question

Which of the measure components is most important to you?

Timeline
GHG Emissions Reductions
Cost
Implementing Department
Equity-Based Outcomes
Co-Benefits



Solid Waste

- ▶ **Achieve zero waste in County Operations.**
- ▶ **Achieve zero waste within the unincorporated county.**
- ▶ **Improve waste management practices at County-owned solid waste facilities to reduce emissions.**
- ▶ **Improve waste management practices in the unincorporated area to reduce emissions and increase waste diversion.**



Water & Wastewater

- ▶ **Develop policies and programs to increase water efficiency, retention, recycling, and reuse to reduce potable water consumption in County operations.**
- ▶ **Develop policies and programs to increase indoor and outdoor water conservation (including water efficiency, retention, recycling, and reuse) in new and existing development in the unincorporated county.**
- ▶ **Develop policies and programs to increase stormwater and wastewater treatment efficiency to reduce imported potable water use.**



Agriculture & Conservation

- ▶ **Acquire and manage conservation lands to preserve natural lands and maximize carbon storage potential.**
- ▶ **Develop a tree planting program that expands canopy across unincorporated communities and prioritizes underserved areas.**
- ▶ **Preserve agricultural lands to prioritize carbon storage and balance economic and development goals.**
- ▶ **Incentivize carbon farming to expand carbon storage capacity in conventionally farmed agricultural land and support climate-friendly farming practices.**
- ▶ **Reduce greenhouse gas emissions from agricultural operations.**



Energy

- ▶ **Develop policies and programs to increase energy efficiency, renewable energy use, and electrification in County Operations.**
- ▶ **Develop policies and programs to increase energy efficiency and electrification in the unincorporated county.**
- ▶ **Develop policies and programs to increase renewable energy use, generation, and storage in the unincorporated county.**



Built Environment & Transportation

- ▶ Reduce fleet and small equipment emissions in County Operations.
- ▶ Increase the use of low-carbon and zero-emission landscaping and off-road construction equipment in the unincorporated county.
- ▶ Reduce emissions from loading docks and vehicle idling in the unincorporated county.
- ▶ Install electric vehicle charging stations and provide incentives for zero-emissions vehicles in the unincorporated county.
- ▶ Reduce emissions from County employee commutes.
- ▶ Improve County roadways to encourage walking, biking, rolling to/from transit and destinations and increase transportation efficiency.
- ▶ Support transit and ridesharing to reduce single occupancy vehicle trips in the unincorporated county.
- ▶ Implement Transportation Demand Management in new development.



CAP Measures

And Your Community – Poll Question

Which of the following sectors MOST interest you? Choose two.

Solid Waste

Energy

Agriculture and Conservation

Water and Wastewater

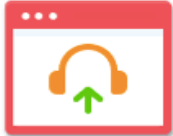
Built Environment and Transportation





Breakout Rooms

Zoom Meeting ID: 332-614-2024

Meeting Topic: [Redacted]
Host Name: [Redacted]
Invitation URL: [Redacted]
[Copy URL](#)
Participant ID: 34

 Join Audio
Computer Audio Connected

 Share Screen

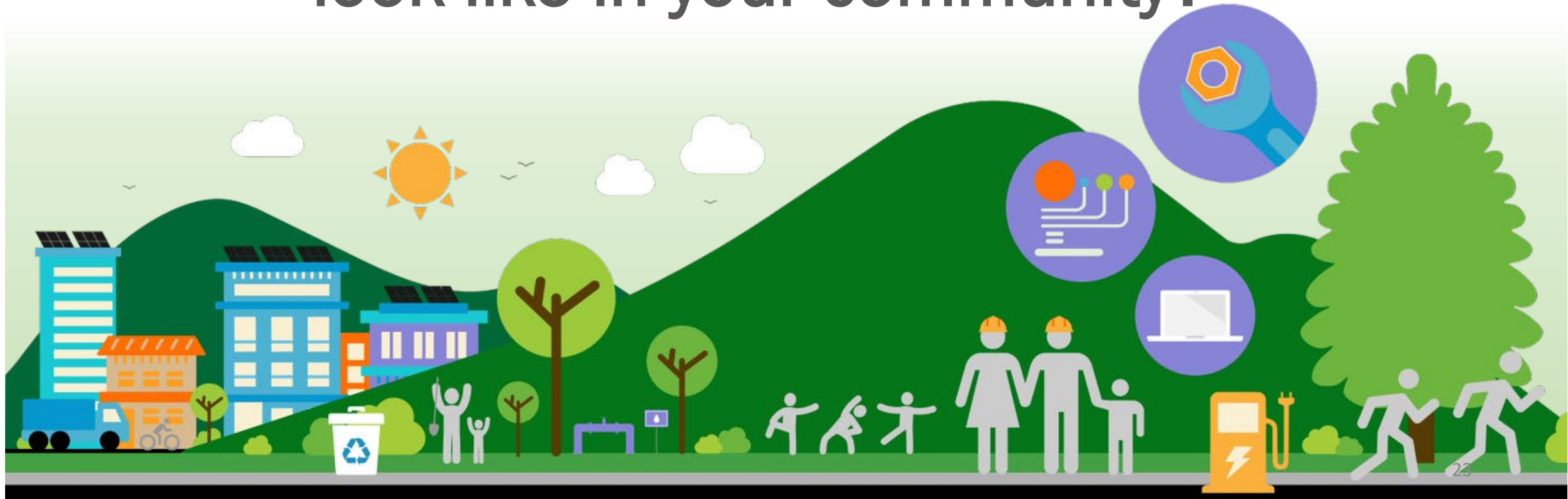
 Invite Others

Unmute Start Video Invite Manage Participants Polling Share Screen Chat Record Closed Caption **Breakout Rooms** End Meeting



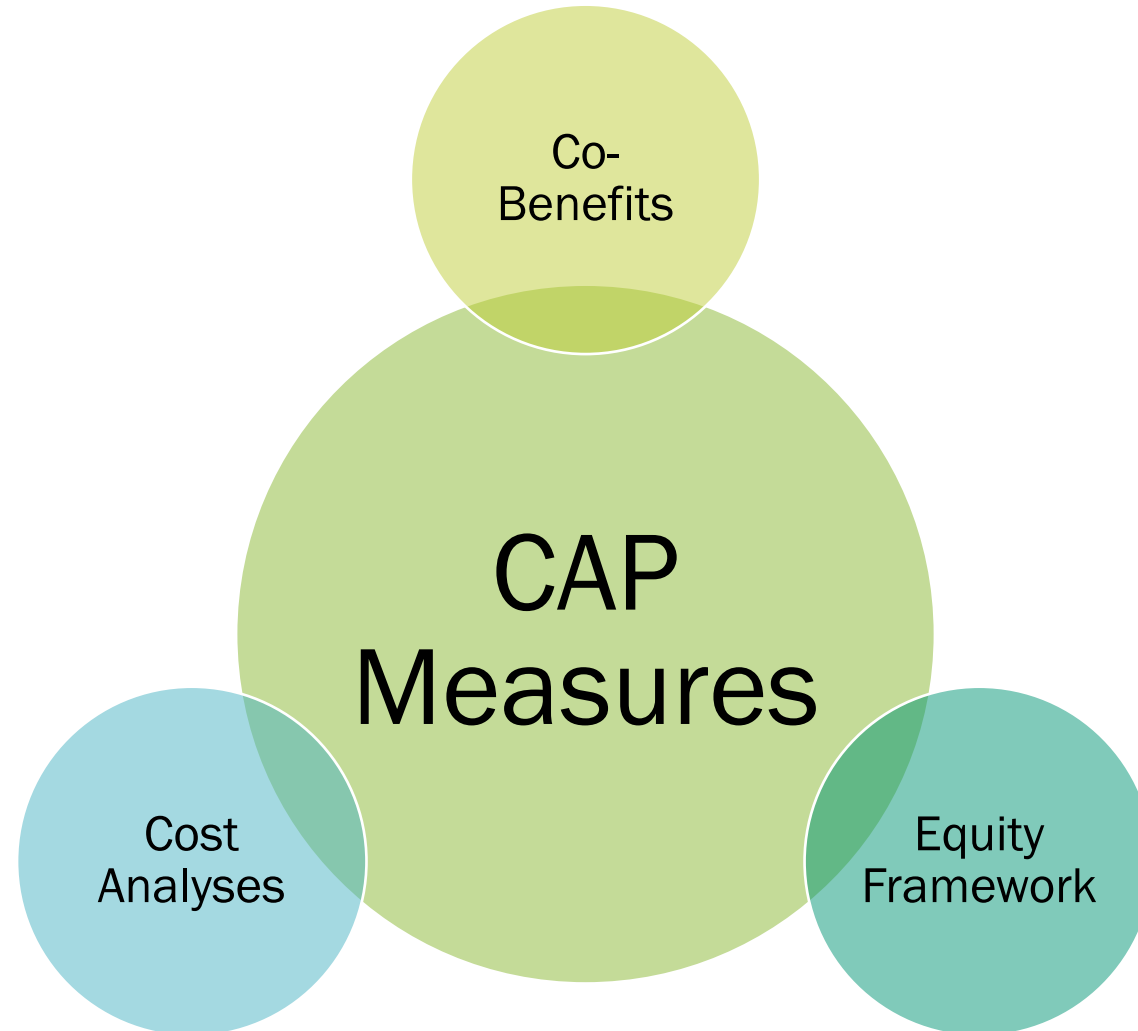
Breakout Room Prompt

What would these measures look like in your community?



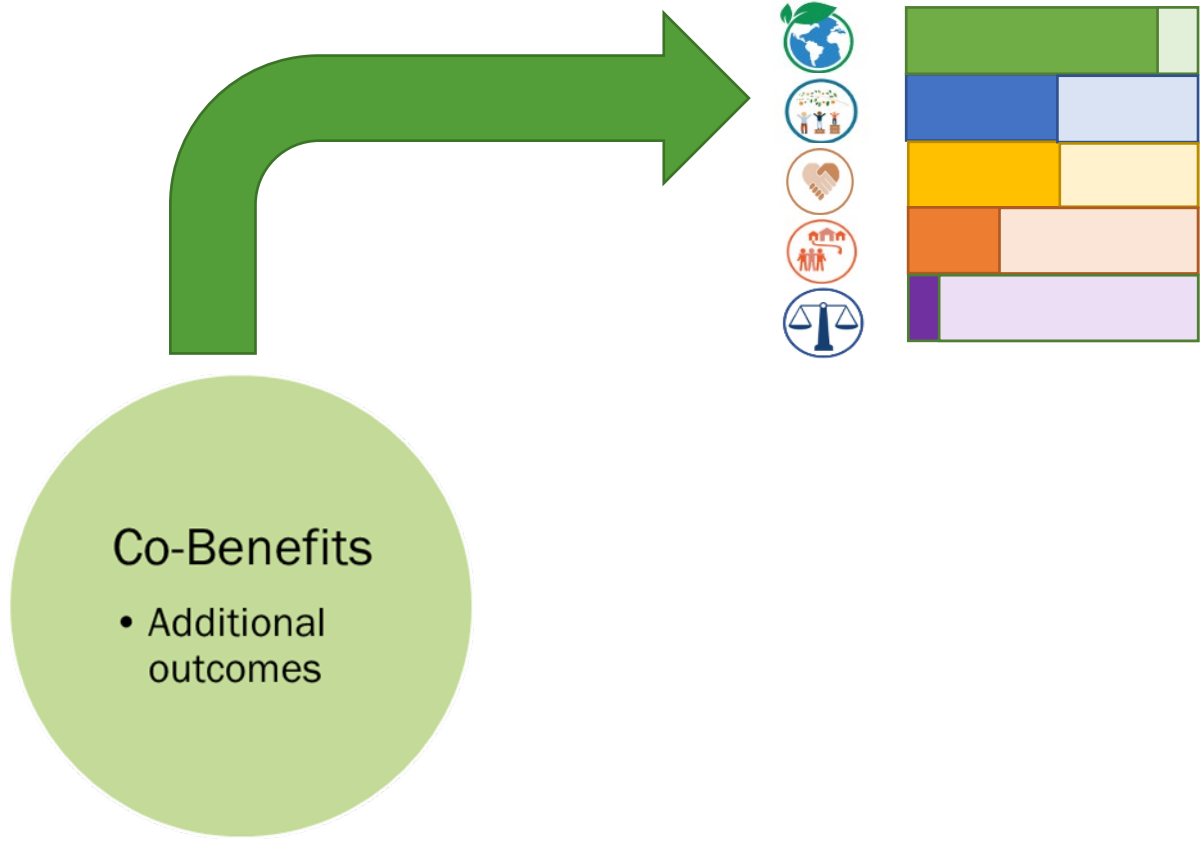







CAP Implementation





CAP Measures And Co-Benefits



<p>Sustainability</p> <ul style="list-style-type: none"> • Using fewer fossil fuels • Reducing waste • Conserving land • Conserving water 	<p>Equity</p> <ul style="list-style-type: none"> • Improving community health • Improving walking, biking, rolling, and transit options • Improving air quality • Improving access to clean technology 	<p>Empower</p> <ul style="list-style-type: none"> • Saving taxpayer money • Promoting a green economy • Saving money on utility bills • Expanding green workforce training 
<p>Community</p> <ul style="list-style-type: none"> • Reducing wildfire risk • Avoiding extra costs to the public • Increasing energy reliability 		<p>Justice</p> <ul style="list-style-type: none"> • Supporting community-driven projects • Reducing GHG emissions quickly • Prioritizing communities most at-risk to climate change 



CAP Measures

Co-Benefits Definition – Poll Question

"Holistic benefits for our region and people that create healthy, resilient, and equitable communities and economies through climate action." Do you think this definition accurately describes co-benefits?

Completely accurate

Mostly accurate

Somewhat accurate

Slightly accurate

Not accurate at all



CAP Measures

Co-Benefits Definition – Poll Question

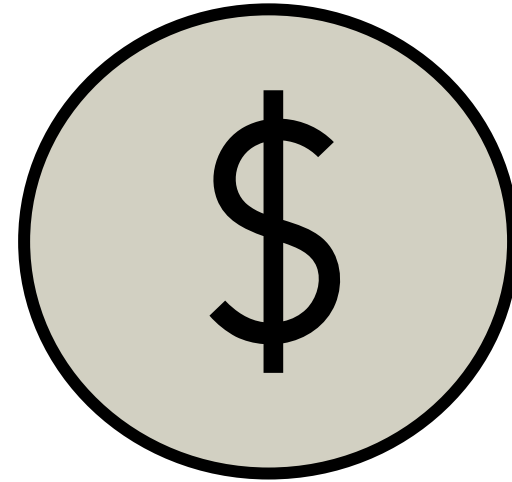
What elements of the definition do you really like or think we need to change?



Implementation Components



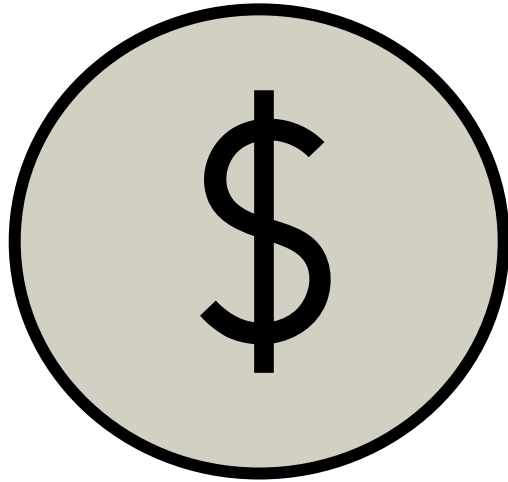
▶ **Equity Framework**



▶ **Cost Analyses**



Implementation Components



▶ Cost Analyses

- ▶ CAP Implementation Cost Report
- ▶ CAP Cost Effectiveness Analysis
- ▶ Cost to Disproportionately Impacted Communities

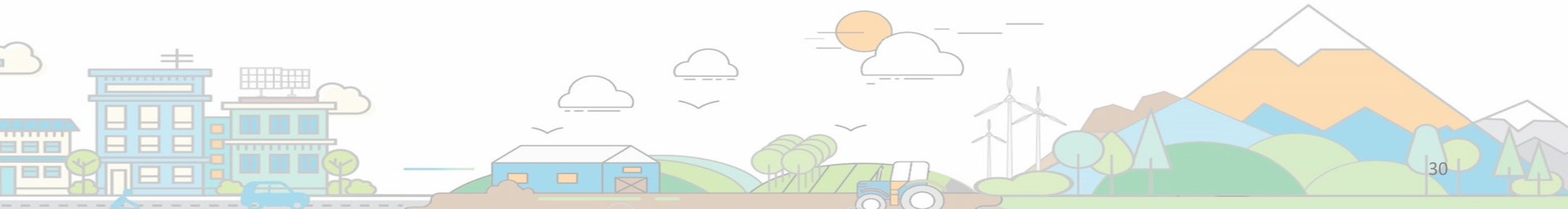
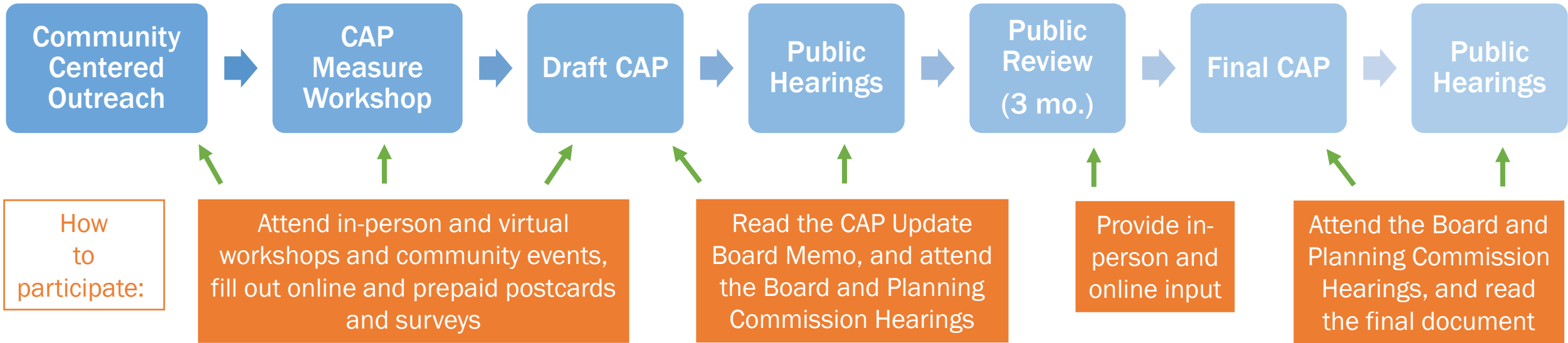


Next Steps

Spring - Summer 2023

Fall 2023 - Winter 2024

Spring - Fall 2024





Public Comment



**WE WANT TO HEAR
FROM YOU!**



**PLEASE SHARE
ADDITIONAL COMMENTS.**



ASK ANY QUESTIONS.

Check out our webpage: bit.ly/CAP_Update

How to Get Involved

- ▶ Sign up for project updates
- ▶ Check out our webpage:
bit.ly/CAP_Update
- ▶ Email us: CAP@sdcounty.ca.gov
- ▶ Follow on social media:



@SDCoSustainable



@SDCountySustainable



@SDCountySustainable



TAKE OUR SURVEY!

