



Welcome

Water & Wastewater Emissions Sector Workshop

Climate Action Plan Update

June 15, 2022

 @SDCoSustainable

 @SDCountySustainable¹



Interpretación simultánea en español

Si necesita interpretación simultánea:

Presione "Interpretation"
y seleccione "Spanish"



Mute

Chat

Raise Hand

Q&A

English

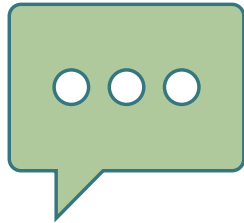
Leave



How to Participate?

?

Zoom Comments/Questions? Send message using the Q&A feature.



Submit Comments/ Questions
During the Meeting



Having Issues With Zoom
During The Meeting?

Use the Q&A feature at the bottom
of your screen



Zoom Meeting Controls

Desktop

?

Zoom Comments/Questions? Send messages using the Q&A feature.

Use Q&A window
to send
comments/
questions

A screenshot of the Zoom "Question and Answer" window. The window title is "Question and Answer". It shows a list of questions and answers. The first question is from "Ariel Hamburger (You)" at 10:22 AM, asking "What's your favorite color?". The answer is from "CAP County of San Diego" at 10:23 AM, replying "Blue". There is a thumbs-up icon below the answer. At the bottom, there is a text input field with the placeholder "Type your question here...". The window also shows "All questions (4)" and "My questions (1)" tabs, and a "Most Upvotes" dropdown menu. At the bottom right, there is a link "Who can see your questions?".

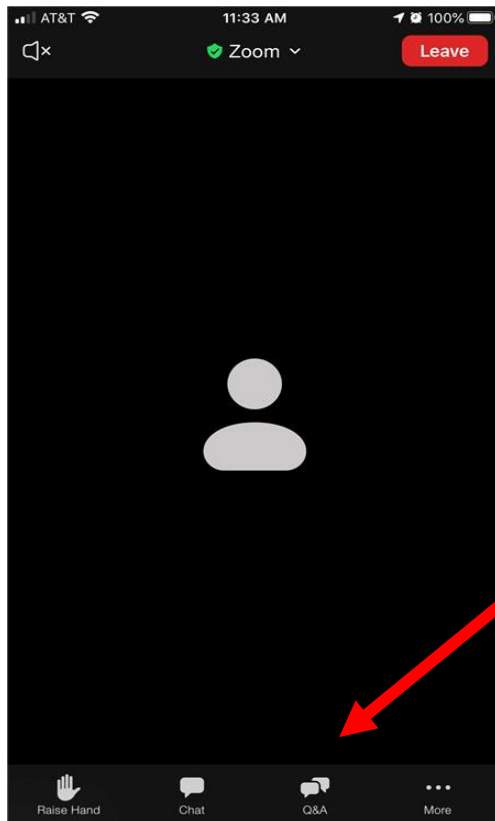


Zoom Meeting Controls

Mobile

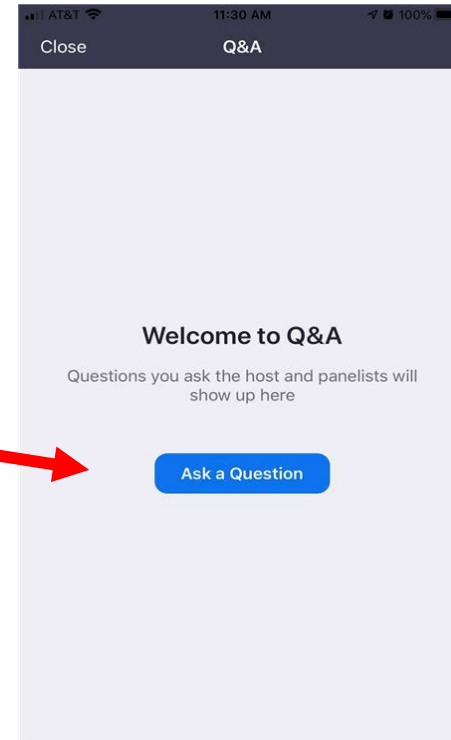
?

Zoom Comments/Questions? Send message using the Q&A feature.



First click,
“More”

Access the
Q&A window
to send
comments/
questions





MEETING TOPICS

- ▶ Workshop logistics
- ▶ Recap: Water & Wastewater Emissions
- ▶ Draft equitable, net-zero vision
- ▶ Strategies and measures to reach the draft vision



Why

We Are Here



Interactive Polls

Poll Everywhere

?

Zoom Comments/Questions? Send message using Chat feature



To Participate:

▶ Scan QR Code

OR:

▶ Open pollev.com/SDCoSustainable681 in your browser (Chrome, Firefox, or Edge)

▶ Enter your name or click Skip

▶ Wait to be re-directed to the event

🌐 When poll is active, respond at PolleEv.com/sdcosustainable681

Welcome! What brought you here today?

🌀 No responses received yet. They will appear here...

I am a...

- resident of the unincorporated county
- resident of an incorporated city (e.g., City of San Diego, Poway, Encinitas...)
- resident of a Native American reservation
- resident of another area (outside of SD County, on a military base, etc.)
- water service / utility professional
- community-based organization representative
- County employee
- other



What is the Climate Action Plan Update





Purpose of Your Feedback

Summer 2021 - Winter 2022

Spring - Summer 2022

Winter 2022 - Spring 2023



What's your
vision?

Vision
Statements



How can we
get there?

Strategies and
Measures



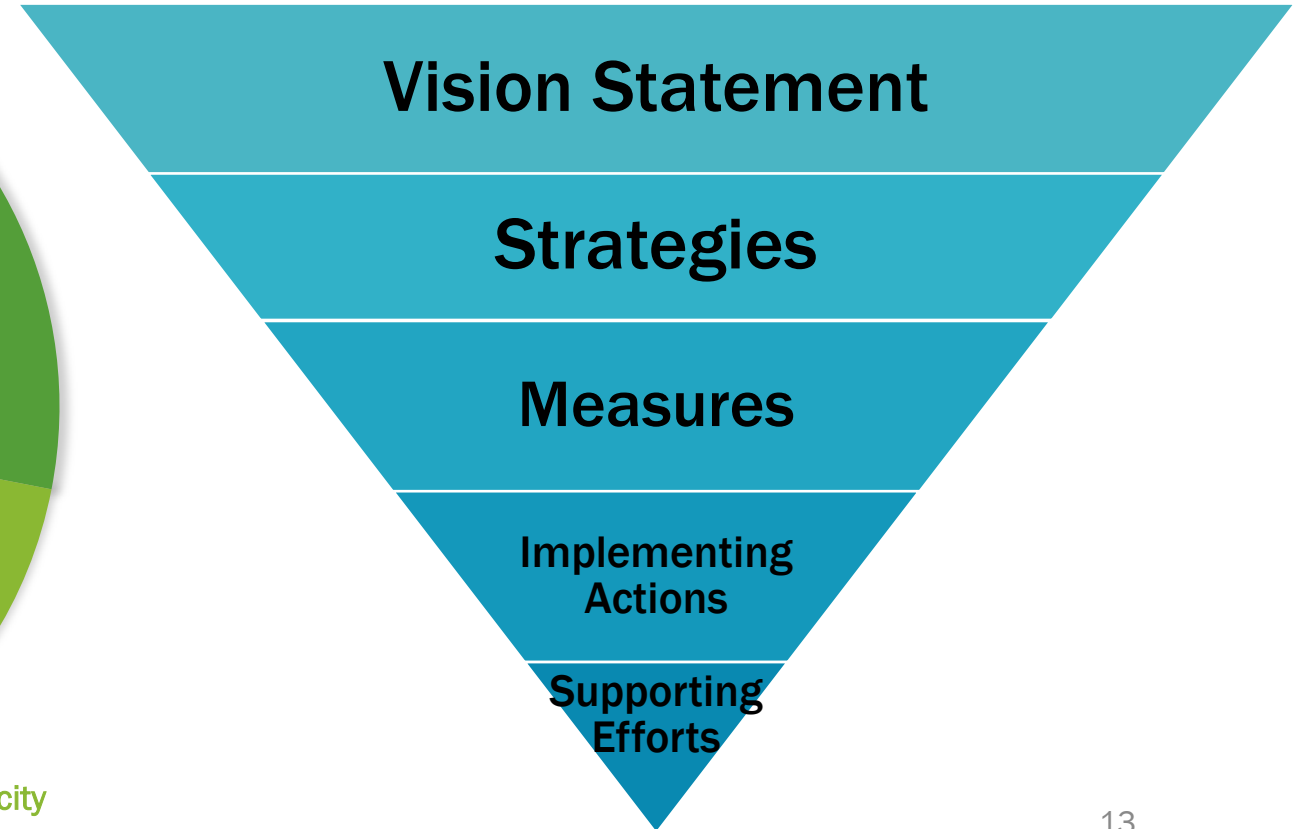
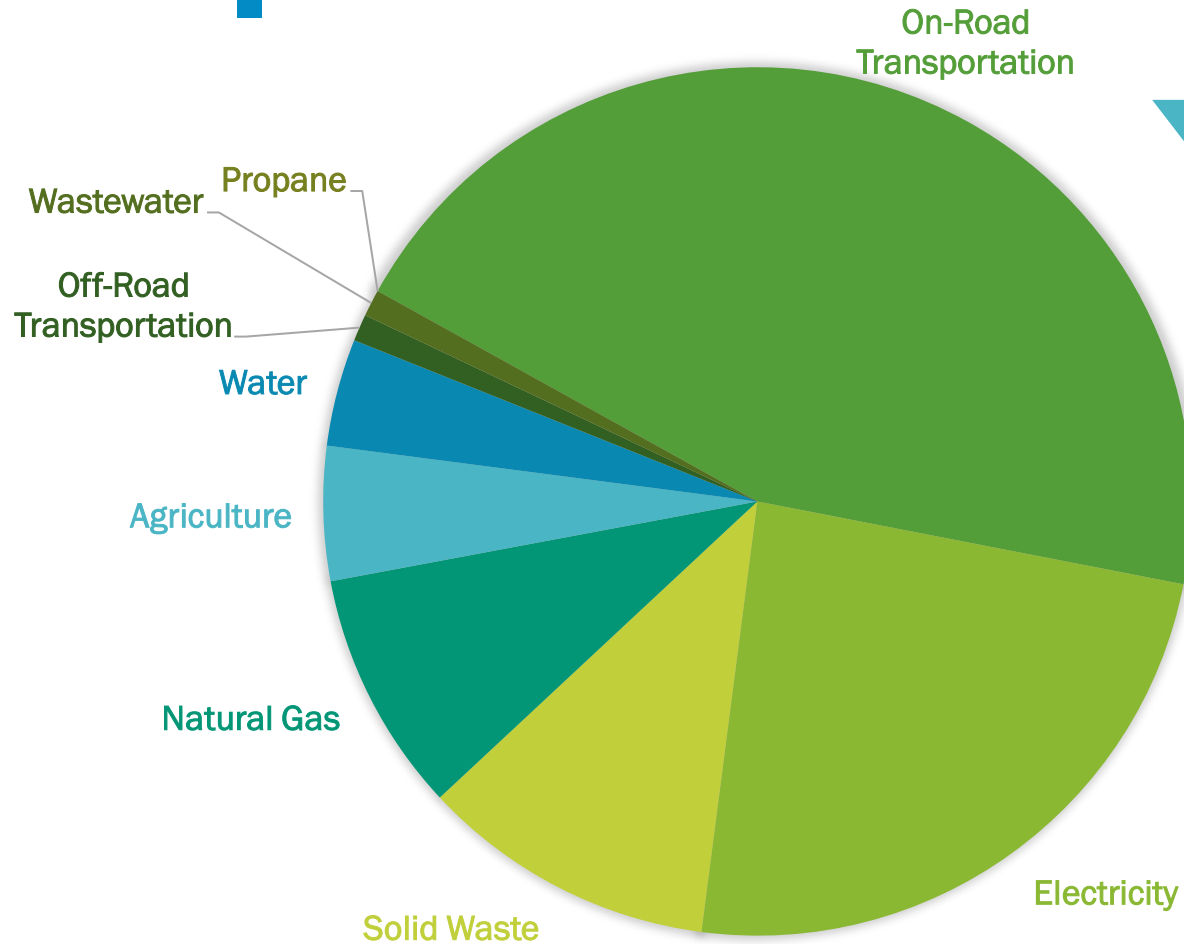
What
matters
to you
most?

Draft CAP
Update



GHG Emissions And Our Approach

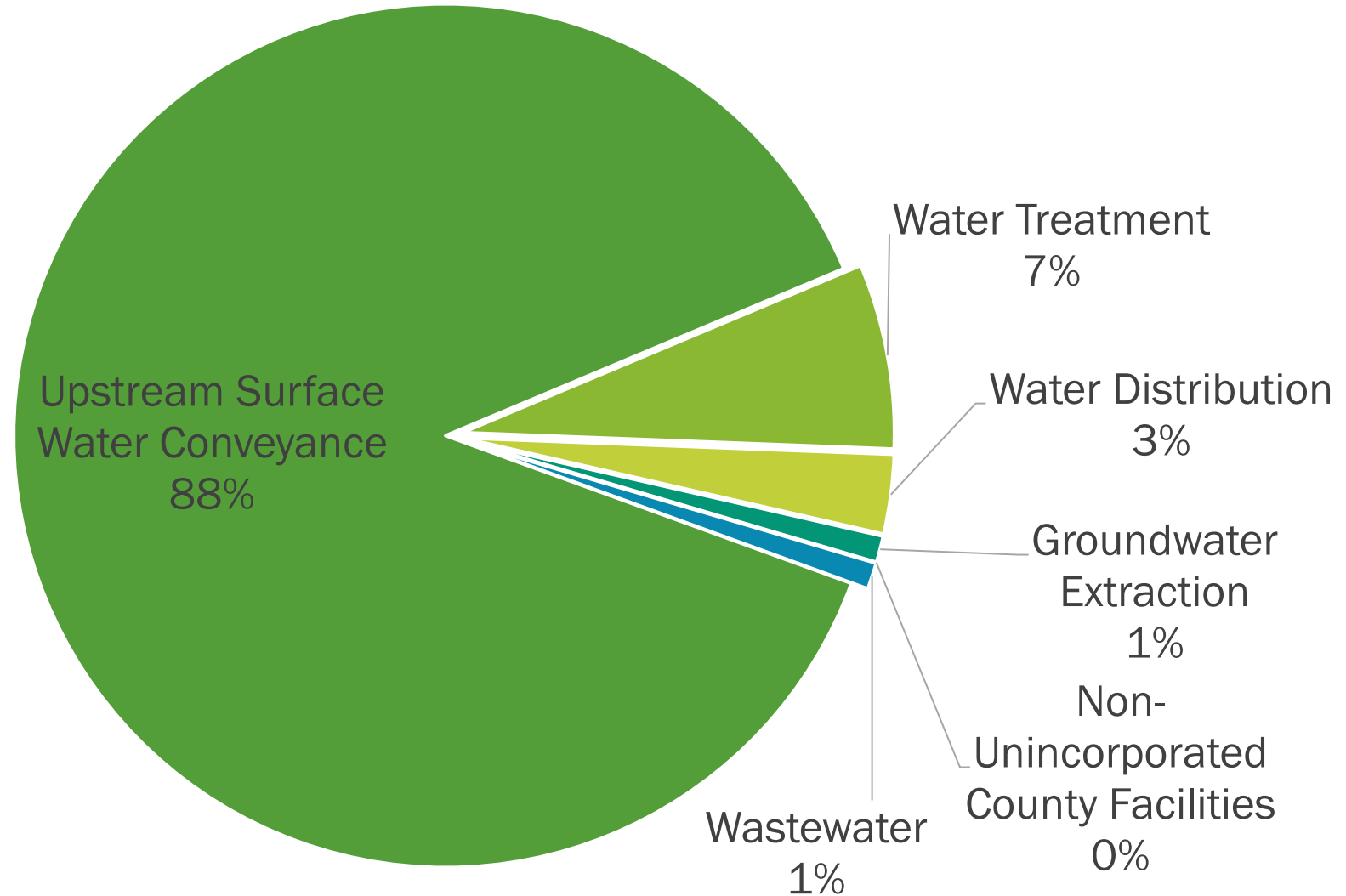
COUNTY GHG EMISSIONS BY SECTOR (2014)





Understanding Water & Wastewater Emissions

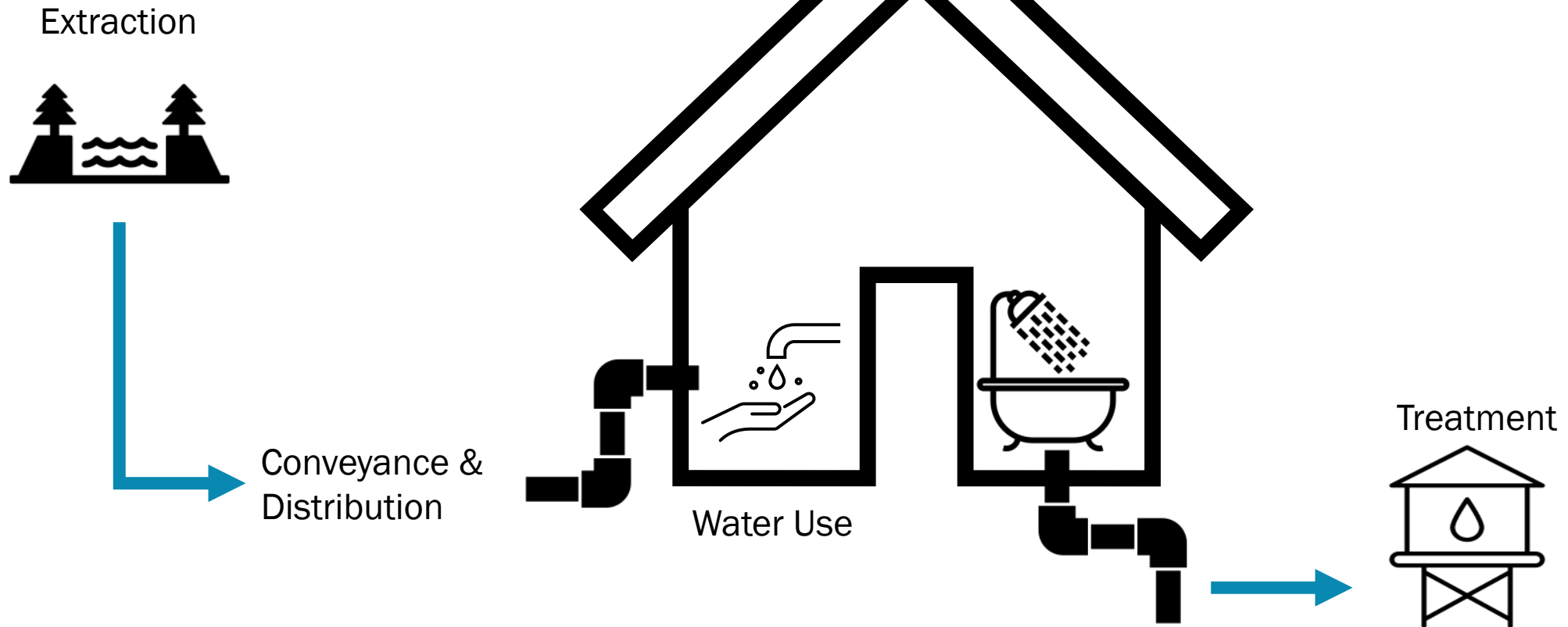
Water & Wastewater Sector Emissions (2014)





Where emissions come from

Water & Wastewater





What we heard...

- ▶ Water efficient appliances
- ▶ Native/drought tolerant landscapes
- ▶ Rebates and incentives
- ▶ Water capture and reuse (greywater/ stormwater/ blackwater) systems
- ▶ Education



Draft Vision Statement

Efficient water use and availability are sustained, and emissions associated with energy used to extract, transport, and treat water are reduced through water efficiency programs and reuse of stormwater and wastewater.

🌐 When poll is active, respond at Pollev.com/sdcosustainable681

"Water quality and adequacy is maintained, and emissions associated with the transportation of water are reduced through indoor and outdoor water conservation programs, efficient delivery pipelines, and reuse of stormwater and wastewater."

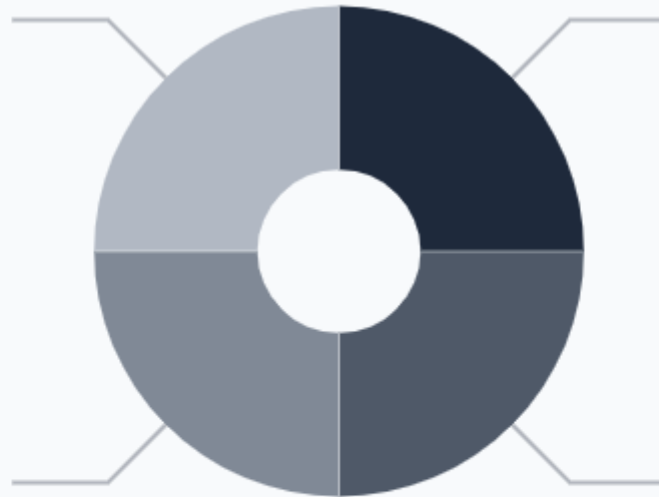
■ Yes, this Vision Statement ref... ■ Almost There ■ Not Quite ■ No, this Vision Statement does...

No, this Vision Statement does not reflect my prior comments

Yes, this Vision Statement reflects my prior comments

Not Quite

Almost There

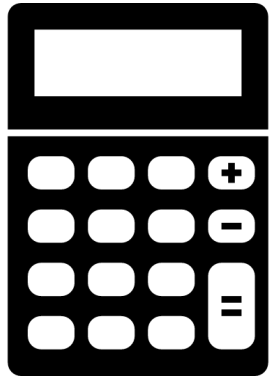


**For those of you who think we're almost or not quite there,
what else do you think should be included?**

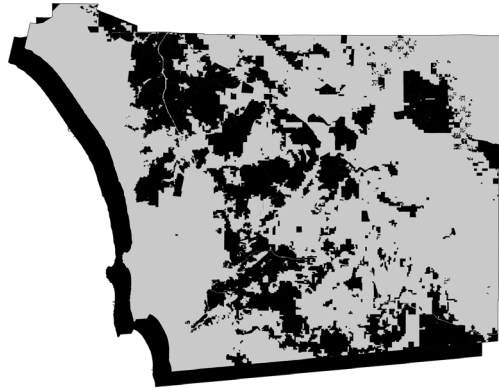
🌟 No responses received yet. They will appear here...



Strategies & Measures to reach our shared vision



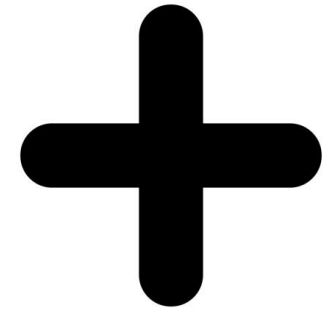
Quantifiable



Within Jurisdiction



Monitorable



Additional



Water & Wastewater Emissions Sector Strategy

Strategy: Decrease potable water consumption in the unincorporated county and County operations.

WATER & WASTEWATER

Draft Measure #1:
Develop policies and programs to increase water efficiency, retention, recycling, and reuse in County operations.



- ▶ Install water-efficient appliances (toilets, faucets)*
- ▶ Collect stormwater*
- ▶ Install greywater and blackwater systems*
- ▶ Install smart irrigation controllers*
- ▶ Plant native, drought tolerant landscaping*

🌐 When poll is active, respond at Pollev.com/sdcosustainable681

Are there additional ways you think we could decrease potable water use in County operations?

Top

WATER & WASTEWATER

Draft Measure #2:
Develop policies and programs to increase indoor and outdoor water **conservation** in new and existing construction in the unincorporated area.



- ▶ Leak detection and pressure management in water pipelines*
- ▶ Adopt policies/incentives to install water efficient appliances*

🌐 When poll is active, respond at PollEv.com/sdcosustainable681

What would make it easier for you to reduce the amount of potable water you use?

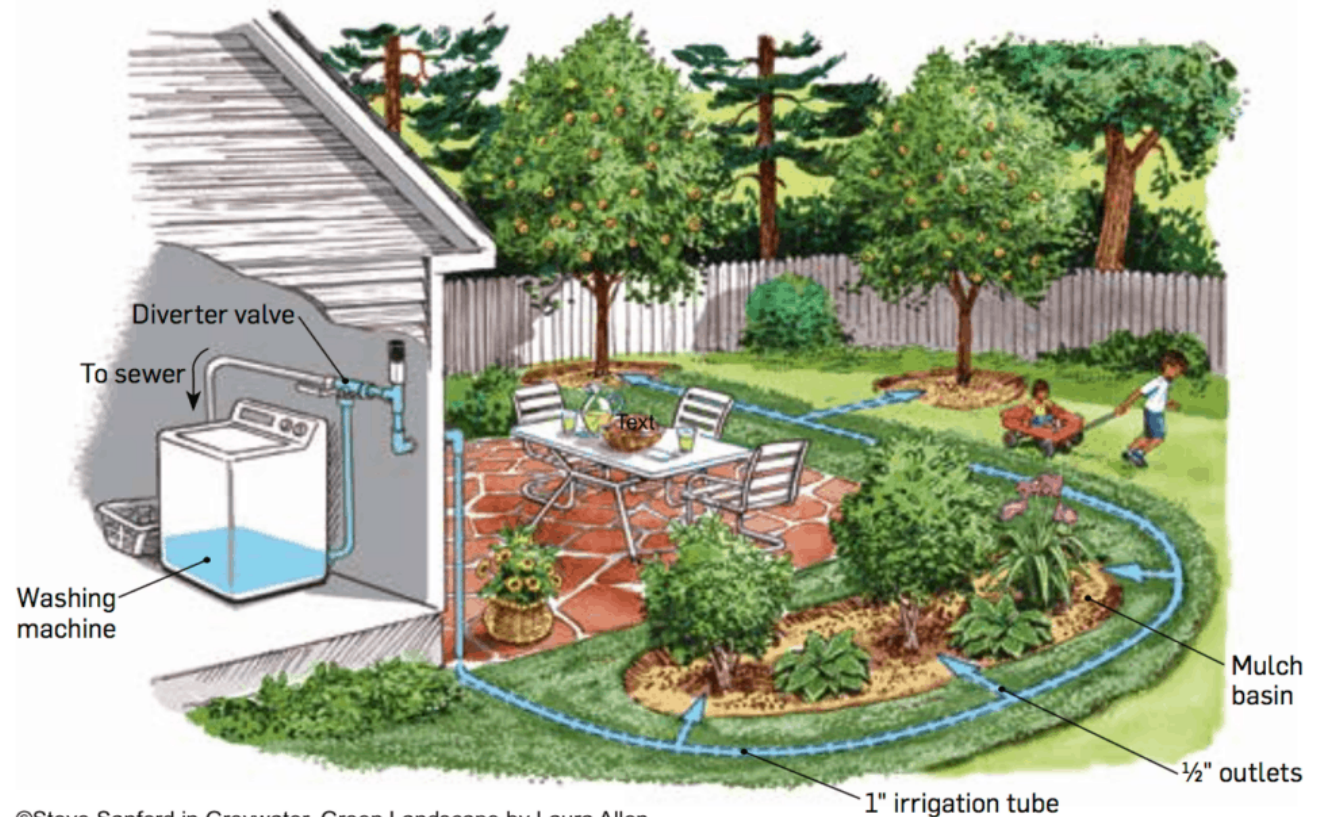
🌱 No responses received yet. They will appear here...

WATER & WASTEWATER

Draft Measure #3:
Develop policies and programs to increase retention, recycling, and reuse of stormwater and wastewater.



- ▶ Increase stormwater, greywater, and blackwater in commercial and residential development
- ▶ Scale wastewater capture and reuse to the neighborhood level
- ▶ Incentivize installation of stormwater, greywater, and blackwater capture and treatment systems*



©Steve Sanford in Greywater, Green Landscape by Laura Allen

🌐 When poll is active, respond at PollEv.com/sdcosustainable681

How can we help decrease potable water use in your community?

🌞 No responses received yet. They will appear here...

🌐 When poll is active, respond at Pollev.com/sdcosustainable681

Why does reducing potable water use matter to you most?

🌀 No responses received yet. They will appear here...

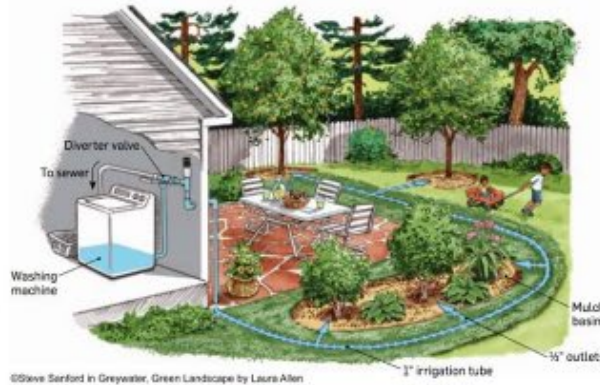
Which action would you most like to see implemented in your community?

Top

Of all the measures we shared, which one is most exciting to you?



Draft Measure #1: Develop policies and programs to increase **water efficiency, retention, recycling, and reuse** in **County** operations.



Draft Measure #3: Develop policies and programs to increase **retention, recycling, and reuse** of stormwater and wastewater.

Draft Measure #2: Develop policies and programs to increase indoor and outdoor **water conservation** in new and existing construction in the unincorporated area.

Are there any other strategies, measures, or actions the County should consider?

🌟 No responses received yet. They will appear here...

WATER & WASTEWATER

Co-Benefits: additional, beneficial effects that will result from implementation of CAP strategies and measures.



- ▶ Improve community health
- ▶ Conserve farmland
- ▶ Save money on utility bills
- ▶ Save public tax dollars
- ▶ Improve air quality
- ▶ Increase energy security/resilience
- ▶ Conserve water
- ▶ Conserve habitat
- ▶ Create green jobs
- ▶ Reduce noise
- ▶ Promote environmental and social justice
- ▶ Improve access to electric vehicles
- ▶ Improve walking, biking, rolling, and transit options

WATER & WASTEWATER

Co-Benefits



- ▶ What you said: “prioritize fixing leaks so runoff is not contaminated”
 - ▶ Why this might be important to you: **conserve habitat**
- ▶ What you said: “replace lead pipes”
 - ▶ Why this might be important to you: **improve public health**
- ▶ What you said: “fresh/rainwater capture”
 - ▶ Why this might be important to you: **conserve water**
- ▶ What you said: “allow on-site greywater and blackwater treatment and reuse”
 - ▶ Why this might be important to you: **save money on utility bills**



🌐 When poll is active, respond at Pollev.com/sdcosustainable681

Given what we just discussed, what co-benefits are important to you?

Top

🌐 When poll is active, respond at PollEv.com/sdcosustainable681

Given the following list, what other criteria are important to you when evaluating measures? GHG reduction; Cost (to County, cost to residents); Equity considerations; Timeliness (how soon GHG reductions start); Co-benefits

🌟 No responses received yet. They will appear here...



CAP Update Measures

What comes next?





Public Comment



WE WANT TO HEAR FROM
YOU!



PLEASE SHARE
ADDITIONAL COMMENTS.



ASK ANY QUESTIONS.

Check out our webpage: bit.ly/CAP_Update



Providing comments by phone

- ▶ Press Star (*) 9 to indicate you would like to speak
- ▶ Listen for the message: “The host would like you to unmute your microphone. You can press Star (*) 6 to unmute”
- ▶ When you are done with your comment, please press Star (*) 6 to re-mute



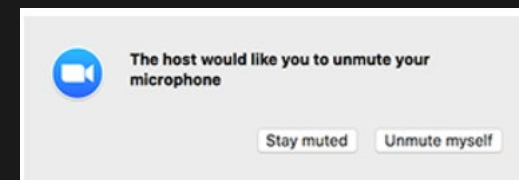
Providing comments by Zoom

?

Zoom Comments/Questions? Send message using the Q&A feature.

Select Raise Hand if you wish to be added to the queue to speak

Example of host would like you to unmute



Mute

Chat

Raise Hand

Q&A

English

Leave



Public Comment



WE WANT TO HEAR FROM
YOU!



PLEASE SHARE
ADDITIONAL COMMENTS.



ASK ANY QUESTIONS.

Check out our webpage: bit.ly/CAP_Update

How to Get Involved: More Workshops



Next:



Energy

6/28 at 6pm on Zoom

<https://tinyurl.com/CAPMeasureEnergy>

Later this summer:



Agriculture and Conservation



Built Environment and
Transportation

How to Get Involved



- ▶ Sign up for project updates
- ▶ Attend a virtual or in-person meeting – details will be shared via project updates
- ▶ Check out our webpage: bit.ly/CAP_Update
- ▶ Email us: CAP@sdcounty.ca.gov
- ▶ Follow on social media:
 -  @SDCoSustainable
 -  @SDCountySustainable

How to Get Involved: *Other Projects*



Organic Materials Ordinance Update



Native Plant Landscaping Policy Options



Accelerate to Zero Initiative



Sustainable Land Use Framework



@SDCoSustainable



@SDCountySustainable



THANK YOU FOR JOINING!

Water & Wastewater Emissions Sector Workshop

CAP UPDATE

June 15, 2022



@SDCoSustainable



@SDCountySustainable