



County of San Diego

Native Plant Landscaping Policy Options

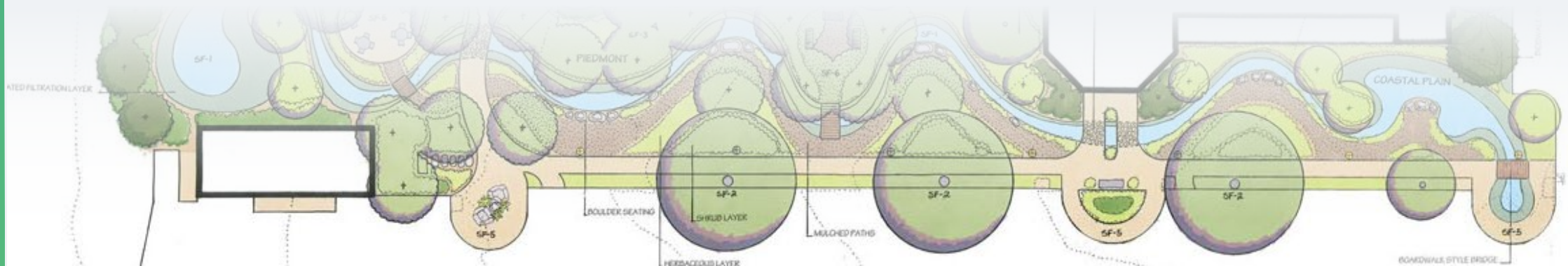


Public Workshop
August 29, 2022



Agenda

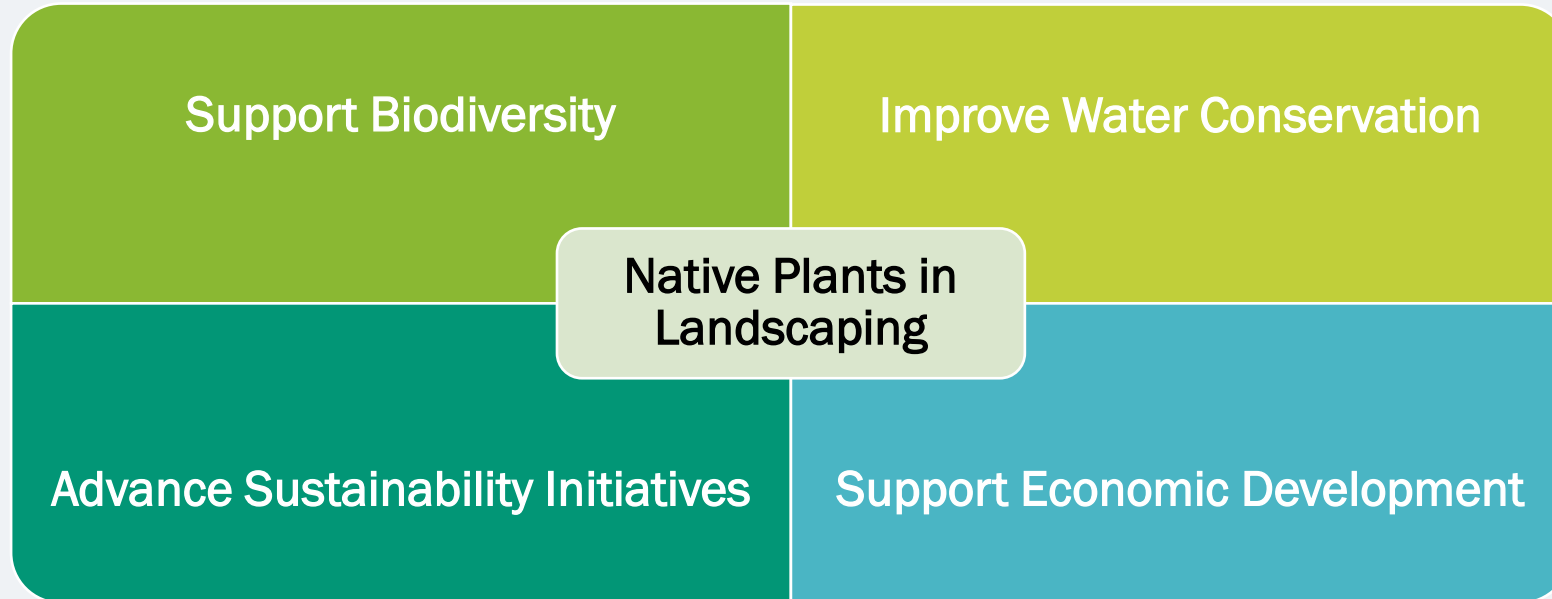
- Meeting Logistics
- Project Introduction and Approach
- Draft Options
- Public Input: Polls & Q/A



Poll question

- I am a...
 - Resident of the unincorporated area
 - Resident of an incorporated city (e.g., City of San Diego, Poway, Encinitas...)
 - Resident of a Native American reservation
 - Resident of another area (outside of San Diego County, on a military base, etc.)
 - Farmer / Horticulturist
 - Landscaping Professional
 - County employee
 - Other

Why native plants?



Board of Supervisors direction

- Collaborate with the San Diego Regional Biodiversity Working Group
- Develop options for a comprehensive Native Plant Landscaping Policy for both public and private property including:
 - Guidelines for including native plants in landscaping
 - Reasonable requirements for County facilities and new developments
 - Incentives for retrofits
 - Equity-based resources and training to ensure diverse participation among landscaping professionals and residents
- Engage with a diverse range of interested stakeholders and the public in the development of Board options
- Return with **options** for a new San Diego County Native Plant Landscaping Policy

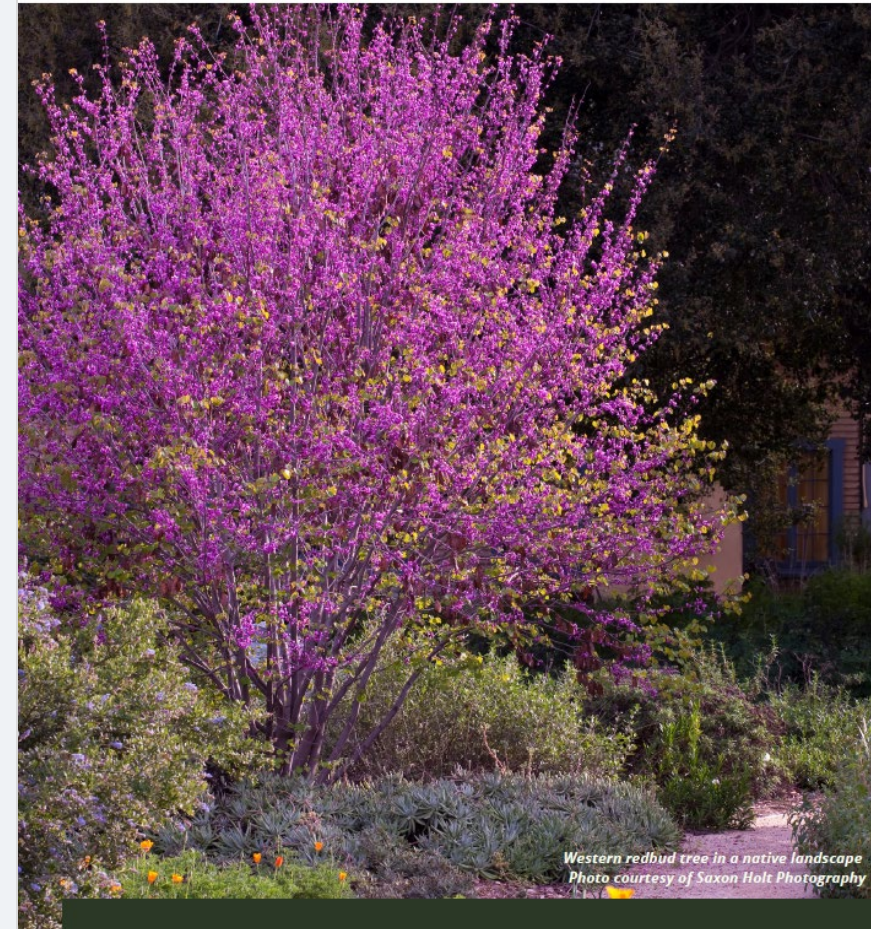


Biodiversity Working Group

- Develop a “San Diego County Native Landscape Program”
 - Visionary
 - Outcome for the future
 - Implement program components using a phased approach
- Link:
<https://www.sdcanonlands.org/nativeplantprogram>

San Diego County Native Landscape Program

*Program Recommendations by the
San Diego County Biodiversity Working Group*



Program development



Poll question

- Which of the proposed Program objectives is the MOST important to you?
 - Create adaptive and resilient landscapes to buffer natural areas
 - Support the County's Landscaping Ordinance outdoor water use reduction goals through the use of native plant landscaping
 - Support native wildlife and pollinators through landscaping plant selection, design, and placement
 - Support the local nursery economy and landscaping industry by developing educational materials and strengthening local demand for native plant products and services
 - Create resources that are easily accessible from the Program website and support the use of native plants in landscaping throughout the entire region

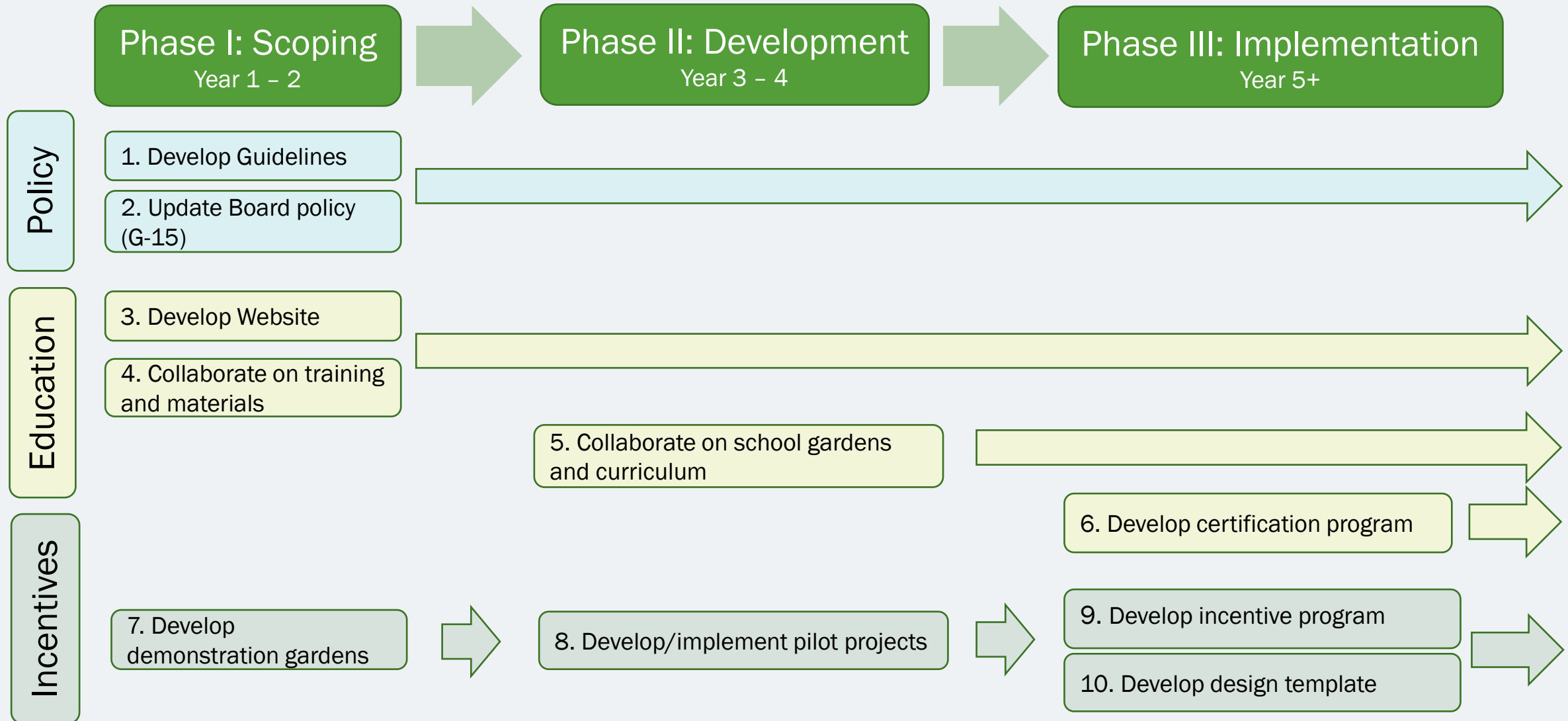
Poll question

- Are there additional Program objectives that should be included?

Program components

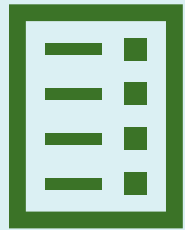


Program components



Phase I: Scoping

Spring 2022 – Spring 2025



Guidelines document

Native Plant Landscaping Guidelines



Board Policy G-15

New County facilities and major facility landscape retrofits



Program Website

Interactive, language accessible website



Training and Educational Materials

Instructor-led and web-based curriculum and resources



Demonstration Gardens

Educational demonstration gardens at County facilities

Phase II: Development

Summer 2025 – Spring 2027



**School Gardens
and Curriculum**

Nature and
ecological
education on
native plants,
gardening, and
conservation



Pilot Program

Landscape
retrofit pilot
projects at private
property

Phase III: Implementation

Summer 2027+



**Certification
Program**

Landscaping
professional
certification
program



**Incentive
Program**

Full incentive
program for
private
development



**Design
Templates**

Easy-to-use
design plans for
varying habitat
structures

Poll question

- Which of the proposed options are the most important to you?
Choose your top three?
 1. Native Plant Landscaping Guidelines document
 2. Board Policy for County facilities
 3. Interactive Program website
 4. Instructor-led and web-based training and education materials
 5. School gardens and curriculum
 6. Landscaping professional certification program
 7. Demonstration gardens at County facilities
 8. Pilot program for private development in priority locations
 9. Full incentive program for private development
 10. Design templates for varying habitat structures

Poll question

- Are there any other actions the County should consider to increase the use of native plant landscaping?

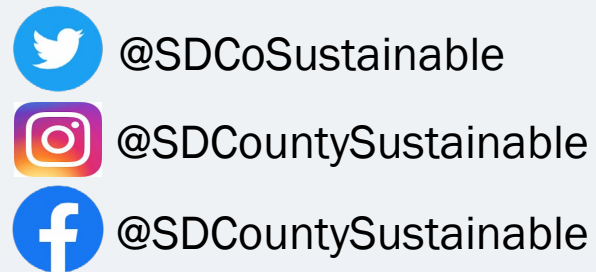
Next Steps

- Continue to receive input on draft options
 - San Diego Regional Biodiversity Working Group
 - County departments
 - External stakeholders
- Finalize options & Board prep for Winter 2022/2023



Contact Information

- Email: Meghan.Kelly@sdcounty.ca.gov; Phone: 619-323-6462
- Visit the County's Sustainability Website for project information <https://www.sandiegocounty.gov/content/sdc/sustainability/projects/native-plants-policy.html>



Public comment



WE WANT TO HEAR FROM
YOU!



PLEASE SHARE
ADDITIONAL COMMENTS.



ASK ANY QUESTIONS.

Project website:



Follow us on Social Media!:



@SDCoSustainable



@SDCountySustainable



@SDCountySustainable



County of San Diego

Native Plant Landscaping Policy Options

Thank you!



Public Workshop
August 29, 2022

